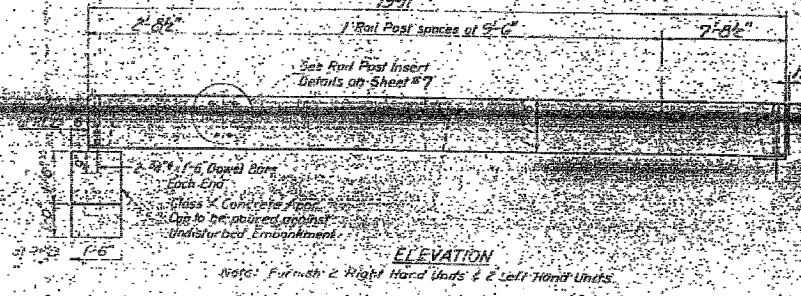


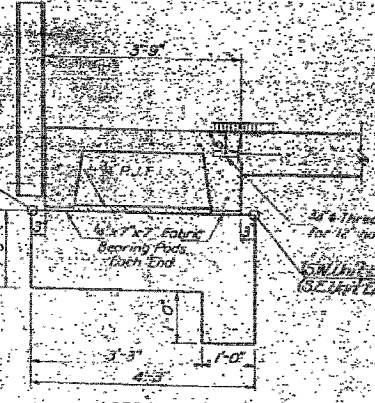
STATE OF ILLINOIS
DEPARTMENT OF TRANSPORTATION

Project No.	885	Section	111BR-1	Sheet No.	6
Contract No.	78033	Station	671+76.00	Scale	AS SHOWN

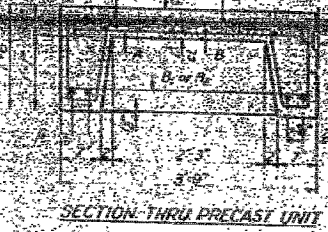


ELEVATION

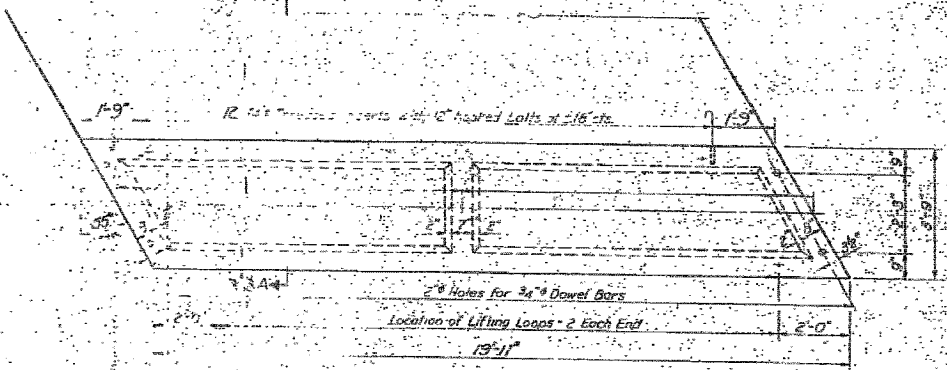
Note: Furnish 2 Right Hand Units & 2 Left Hand Units



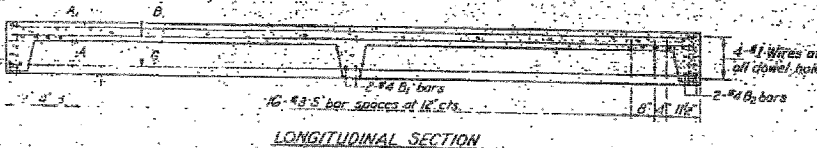
SECTION A-A



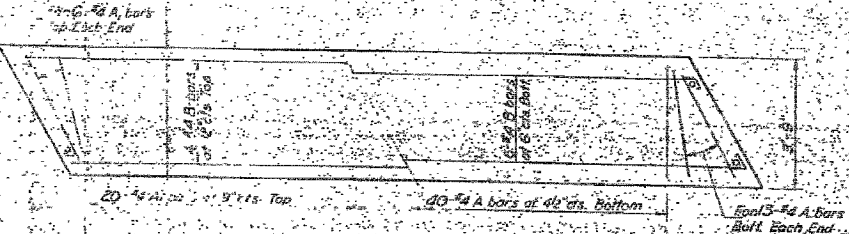
SECTION THRU PRECAST UNIT



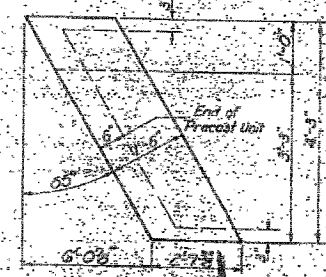
PARTIAL PLAN OF APPROACH



LONGITUDINAL SECTION



SLAB REINFORCEMENT



PLAN - APPR. CAP



BAR A1



BAR S

BAR LIST - ONE UNIT

Bar	No.	Size	Length	Shape
A	66	#4	3'-3"	
A1	32	#4	4'-0"	
B	10	#4	19'-6"	
B1	2	#4	3'-0"	
B2	2	#4	6'-3"	
C	4	#10	19'-6"	
S	42	#3	3'-4"	L

NOTES

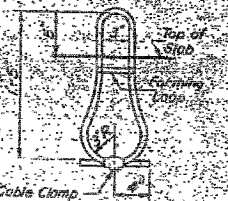
Unless otherwise approved by the Engineer, lifting loops shall be 3/4" 6x12 class wire rope with fiber core and shall have a minimum ultimate strength of 10,700 lbs. Loops shall be burned off after slab has been erected. Holes shall be drilled and anchor dowels grouted in place. Cast of reinforcement and accessories cast into the slab and bearing pads, furnishing, cutting, placing and grouting anchor dowels and 3/4" hooked bolts is included in Unit bid price for Precast Concrete Bridge Slab. The Precast Concrete Bridge Slab shall be erected and aligned with the exterior face of the exterior Deck Beam after Deck Beams are in final position.

BILL OF MATERIAL

Item	Unit	Quantity
Precast Concrete Bridge Slab	Sq. Ft.	239
Class X Concrete	Cu Yds.	2.9



FABRIC BEARING PAD



LIFTING LOOP DETAIL

STRESSES

f_c = 4,500 psi
f_t = 1,500 psi
f_s = 20,000 psi
n = 8

LOADING H-20

APPROACH DETAILS
EA. 81.885 SEC. 111B-1
EDGE COUNTY
STATION 671+76.00

DESIGNED: *Ch. Tom Clark*
CHECKED: *Lance Keld*
DRAWN: *Joe Sutherland*
DATE: *October 13, 1981*



FOR INFORMATION ONLY

FILE NAME =	USER NAME = \$USER\$	DESIGNED - JHM	REVISED -	STATE OF ILLINOIS DEPARTMENT OF TRANSPORTATION	EXISTING STRUCTURE PLANS			F.A.P. RTE. 885	SECTION 111BR-1	COUNTY POPE	TOTAL SHEETS 69	SHEET NO. 31
\$FILEL\$	PLOT SCALE = \$SCALE\$	DRAWN - AEC	REVISED -		SCALE:	SHEET NO. OF SHEETS	STA. TO STA.	CONTRACT NO. 78033				
	PLOT DATE = \$DATE\$	CHECKED - JMH	REVISED -					FED. ROAD DIST. NO. 7 ILLINOIS FED. AID PROJECT				
		DATE - 03/18/08	REVISED -									