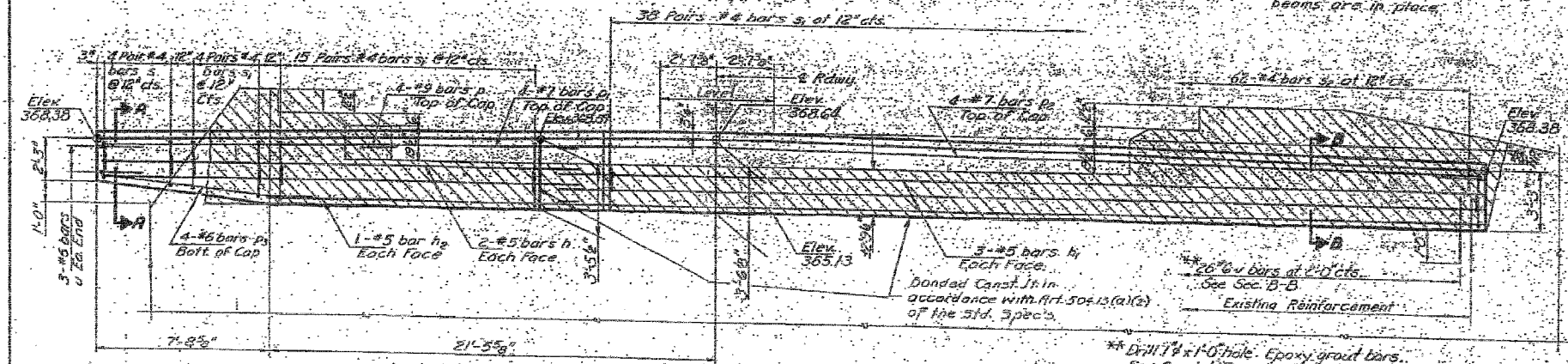


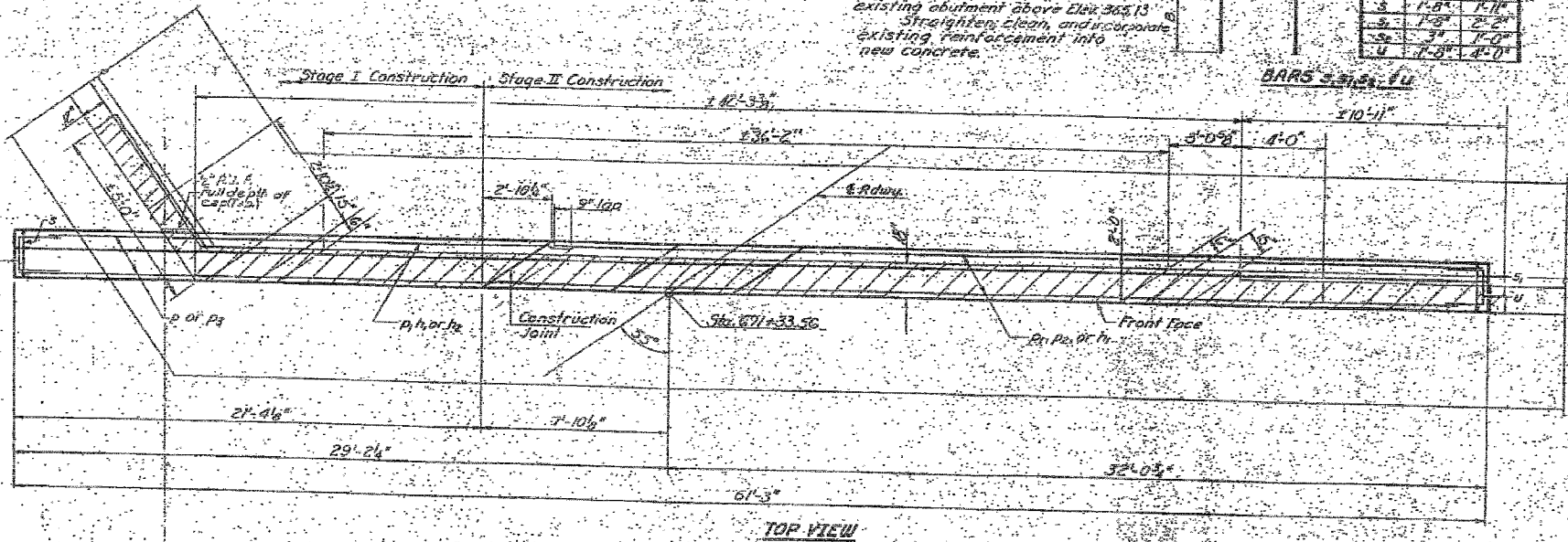
STATE OF ILLINOIS  
DEPARTMENT OF TRANSPORTATION

\* Portion of Abut above construction joint shall be poured after the beams are in place.



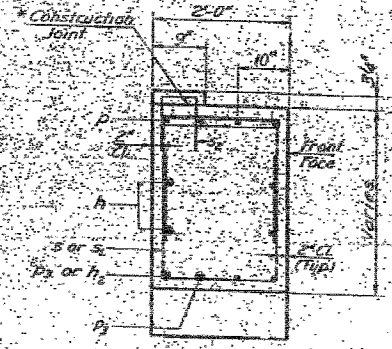
ELEVATION  
Looking West

Note: Remove hatched portion of existing abutment above Elev. 365.13. Straighten, clean, and incorporate existing reinforcement into new concrete.

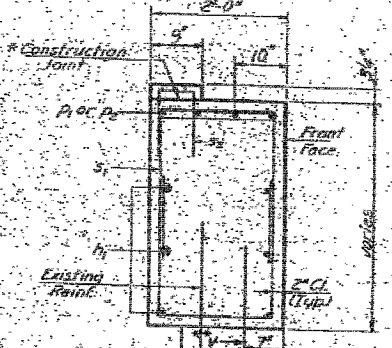


TOP VIEW

Quantity	Description	Unit	Notes
1	11BR-1	FOPE	2.5
1	11BR-2	FOPE	2.5



SECTION A-A



SECTION B-B

WEST ABUTMENT  
BILL OF MATERIAL

Bar	No.	Size	Length	Shape
A	4	#5	22'-0"	
B	4	#5	30'-0"	
C	2	#5	17'-3"	
D	4	#5	11'-0"	
E	4	#5	16'-0"	
F	4	#7	36'-11"	
G	4	#6	10'-0"	
H	4	#4	5'-0"	
I	4	#4	6'-0"	
J	4	#4	2'-5"	
K	5	#5	9'-0"	
L	20	#6	2'-0"	

Reinforcement Bars Round #160  
Class 3 Concrete 15000 PSI  
Concrete Removal 100 Yds

WEST ABUTMENT  
F.A. RT. 885(S.B.T. RT. 145) - SEC. 11B-DR-1  
POPE COUNTY  
STA. 671+76.00

DESIGNED: *Ch. Tim Chen*  
CHECKED: *B. R. Sisk*  
DRAWN: *A. W. R.*  
CHECKED: *A. W. R.*

EXAMINED: *Thomas J. Halpin*  
DATE: *October 13, 2008*  
APPROVED: *Thomas J. Halpin*



FOR INFORMATION ONLY

FILE NAME =	USER NAME = #USER#	DESIGNED - JHM	REVISED -	STATE OF ILLINOIS DEPARTMENT OF TRANSPORTATION	EXISTING STRUCTURE PLANS	F.A.P. RTE. 885	SECTION 11BR-1	COUNTY POPE	TOTAL SHEETS 69	SHEET NO. 33		
#FILEL#	PLOT SCALE = #SCALE#	DRAWN - AEC	REVISED -			SCALE:	SHEET NO. OF SHEETS STA. TO STA.	CONTRACT NO. 78033				
	PLOT DATE = #DATE#	CHECKED - JMH	REVISED -			FED. ROAD DIST. NO. 7 ILLINOIS FED. AID PROJECT						
		DATE - 03/18/08	REVISED -									