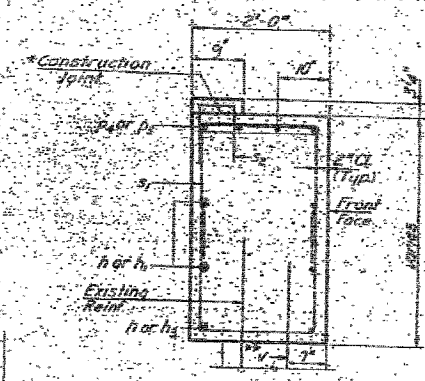
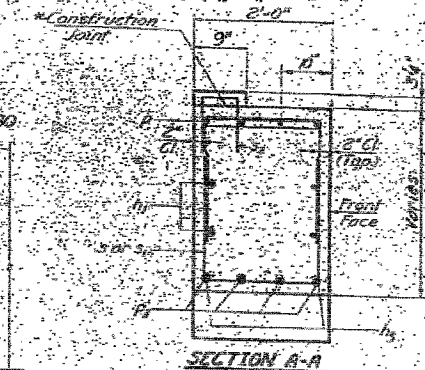
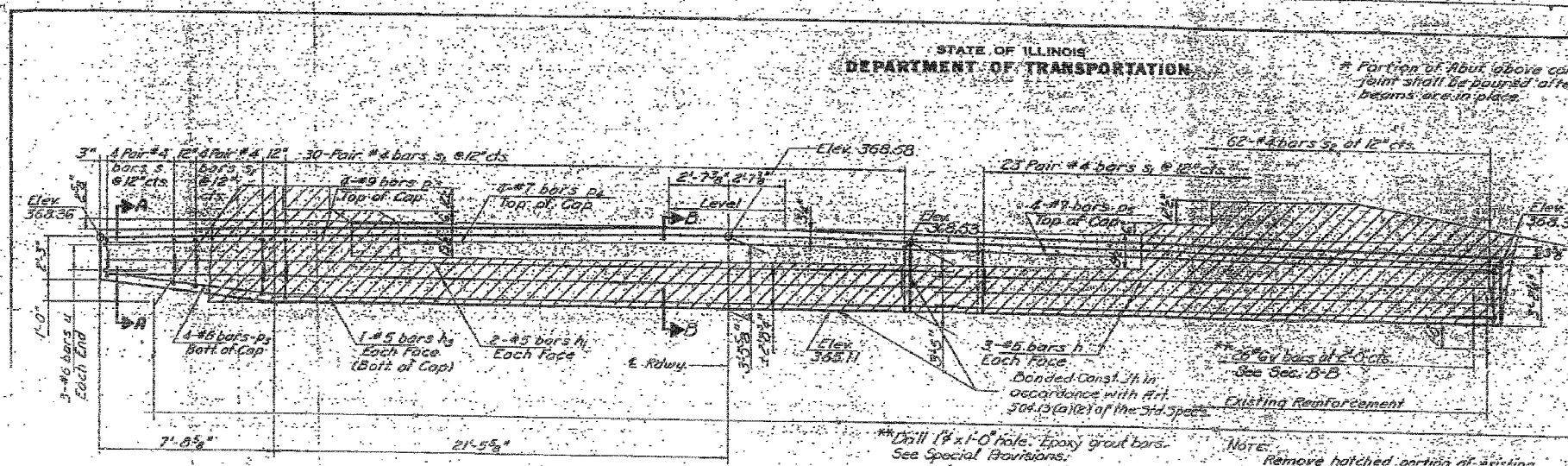


STATE OF ILLINOIS
DEPARTMENT OF TRANSPORTATION

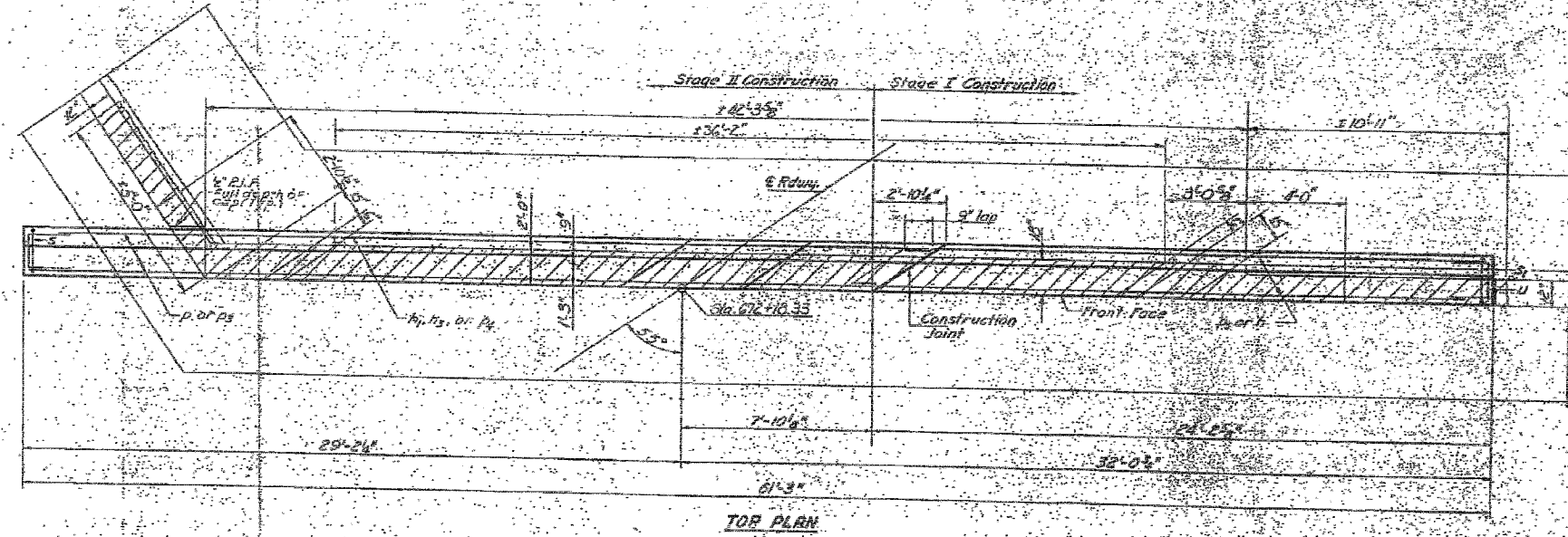
* Portion of Abut. Above construction joint shall be poured after the beams are in place.

Sheet No.	10
Project No.	111BR-1
Section	DR-1



Note: Remove hatched portion of existing abutment above Elev. 368.11. Straighten, clean, and incorporate existing reinforcement into new concrete.

** Drill 1/2" x 1'-0" hole. Epoxy grout bars. See Special Provisions.



EAST ABUTMENT BILL OF MATERIAL

Bar	No.	Size	Length	Shape
A	8	#5	22'-0"	U
B	4	#5	36'-9"	U
C	2	#5	32'-0"	U
D	4	#5	11'-0"	U
E	4	#6	10'-0"	U
F	4	#7	31'-0"	U
G	4	#7	22'-0"	U
H	8	#4	2'-5"	U
I	114	#4	6'-0"	U
J	62	#4	2'-3"	U
K	6	#8	9'-8"	U
L	26	#6	2'-6"	U
Reinforcement Bars	Paired		176.0	
Class II Concrete	CU Vol.		18.3	
Concrete Removal	CU Vol.		10	

EAST ABUTMENT
 E.R. RT. 681 SBT RT 145 - SEC. 111B - DR-1
 POPE COUNTY
 STA. 671+76.00

DESIGNED: *Ch. Tran. Olson*
 CHECKED: *B. R. Johnson*
 DRAWN: *G.M.P.*
 CHECKED: *J.P.*

EXAMINED: *Janice J. Hayward*
 PASSED: *[Signature]*
 APPROVED: *[Signature]*

October 13, 1981



FOR INFORMATION ONLY

FILE NAME =	USER NAME = #USER#	DESIGNED - JHM	REVISED -	STATE OF ILLINOIS DEPARTMENT OF TRANSPORTATION	EXISTING STRUCTURE PLANS	F.A.P. RTE. 885	SECTION 111BR-1	COUNTY POPE	TOTAL SHEETS 69	SHEET NO. 34
\$FILE#	PLOT SCALE = #SCALE#	DRAWN - AEC	REVISED -			SCALE:	SHEET NO. OF SHEETS STA. TO STA.	CONTRACT NO. 78033		
	PLOT DATE = #DATE#	CHECKED - JMH	REVISED -			FED. ROAD DIST. NO. 7 ILLINOIS FED. AID PROJECT				
		DATE - 03/18/08	REVISED -							