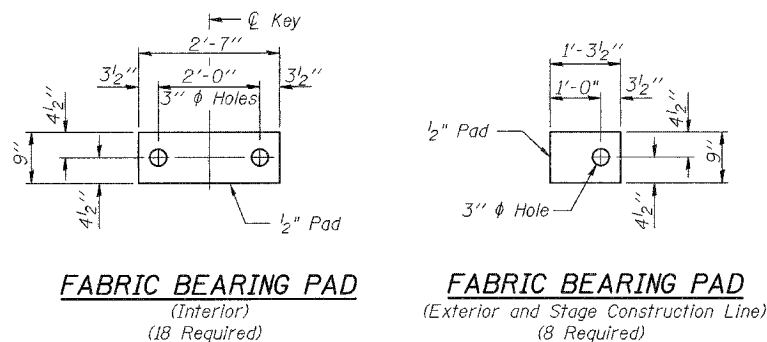


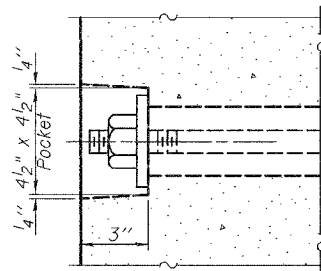
STATE OF ILLINOIS  
DEPARTMENT OF TRANSPORTATION

ROUTE NO. F.A.P. 885	SECTION 111BR-2	COUNTY POPE	TOTAL SHEETS 69	SHEET NO. 54	SHEET NO. 6 11 SHEETS
FED. ROAD DIST. NO. 7		ILLINOIS	FED. AID PROJECT-		

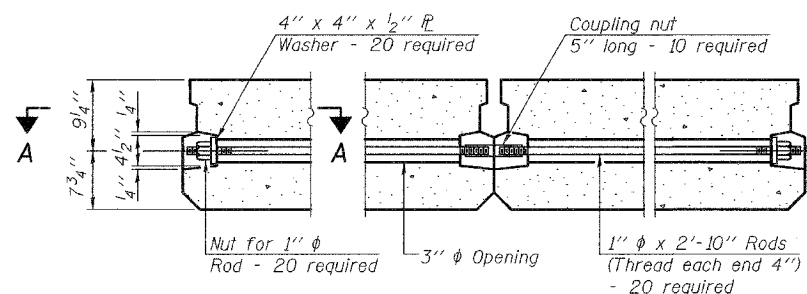
Contract #78033



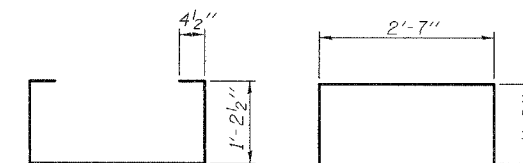
**FIXED**



**SECTION A-A**

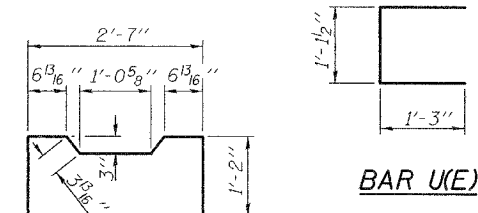


**TYPICAL TRANSVERSE TIE ASSEMBLY**



**BAR S<sub>1</sub>(E)**

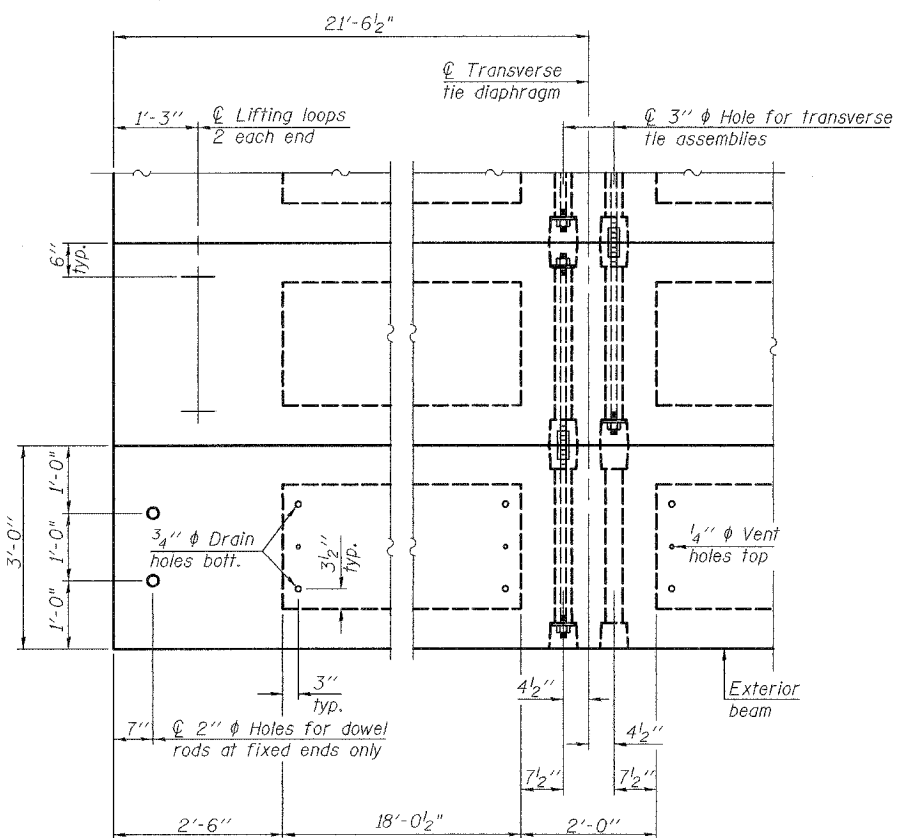
**BAR S(E)**



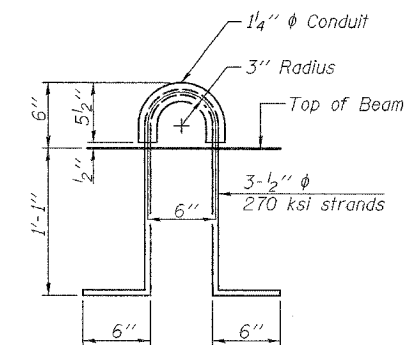
**BAR U(E)**

**BAR S<sub>2</sub>(E)**

**BAR U<sub>1</sub>(E)**



**PLAN VIEW**



**LIFTING LOOP DETAIL**

Note: Connect beams in pairs with the transverse tie configuration shown.

**NOTES**

- See Sheets 9 and 10 of 11 for fascia beam modifications for rail post anchorage.
- Prestressing steel shall be uncoated high strength, low relaxation 7-wire strand, Grade 270.
- The nominal diameter shall be 1/2" and the nominal cross-sectional area shall be 0.153 sq. in.
- The 1" rods in the transverse tie assembly shall be tightened to a snug fit and the threads set. Pockets on exterior faces of bridge shall be filled with grout after transverse tie assembly is in place.
- Two 1/2" fabric adjusting shims of the dimensions of the exterior bearing pad shall be provided for each bearing pad location.
- A minimum 2 1/2" diameter lifting pin shall be used to engage the lifting loops during handling.
- Lifting loops shall be burned off after beams have been erected.
- Corrosion Inhibitor, per Article 1020.05(b)(12) and 1021.06 of the Standard Specifications, shall be used in the concrete for precast prestressed concrete deck beams.
- Compressive strength of prestressed concrete, f'c, shall be 6000 psi.
- Compressive strength of prestressed concrete at release, f'ci, shall be 5000 psi.
- The top surface of the beams shall be finished according to the IDOT Manual for Fabrication of Precast Prestressed Concrete Products.

**BILL OF MATERIAL**

Precast Prestressed Conc. Deck Bms. (17" Depth)	Sq. Ft.	1,422
---	---------	-------

**17" X 36" DECK BEAM DETAILS**  
**ILL. ROUTE 146 OVER ROOT LICK BRANCH**  
**F.A.P. ROUTE 885 - SECTION 111BR-2**  
**POPE COUNTY**  
**STATION 818+03.50**  
**STRUCTURE NO. 076-0008**



DESIGNED	YSS
CHECKED	RLM
DRAWN	PRC
CHECKED	RLM

03/17/08