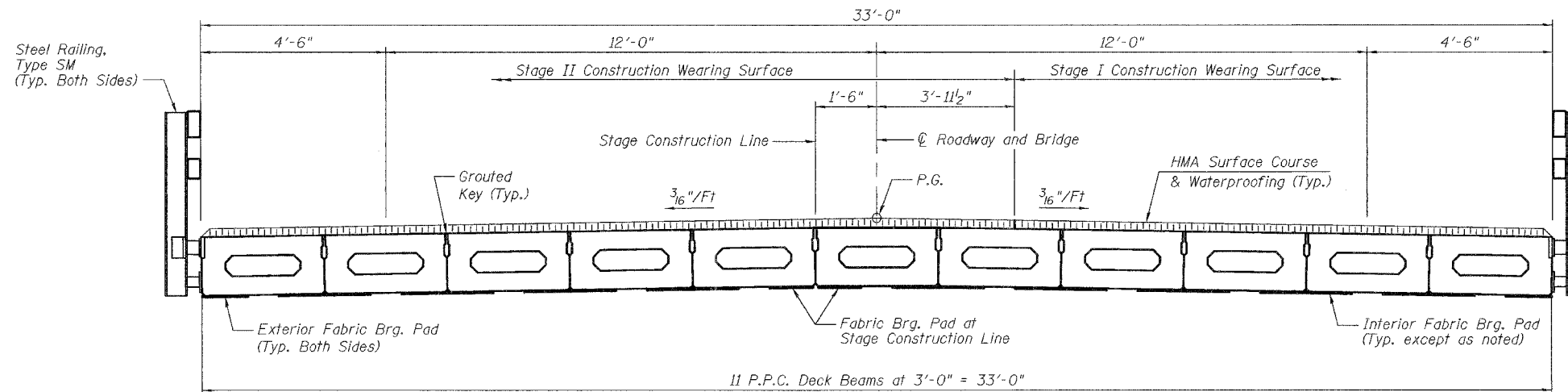


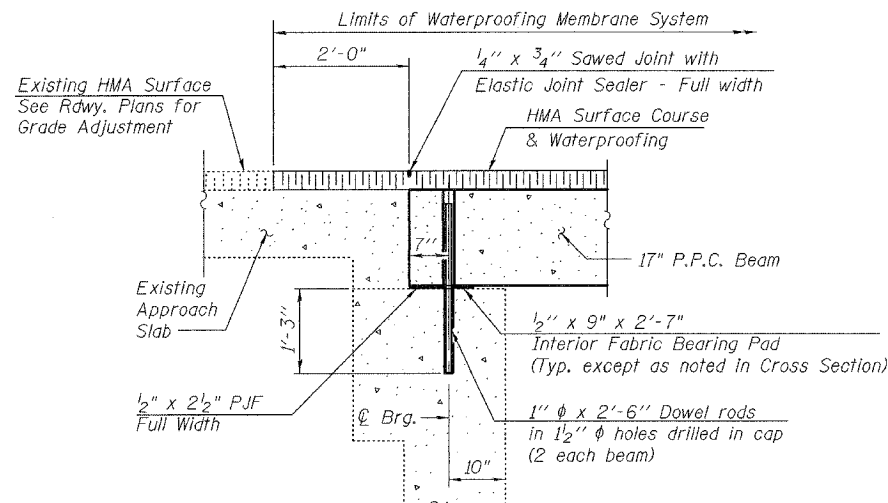
STATE OF ILLINOIS
DEPARTMENT OF TRANSPORTATION

ROUTE NO.	SECTION	COUNTY	TOTAL SHEETS	SHEET NO.	SHEET NO. 8
F.A.P. 885	111BR-2	POPE	69	56	11 SHEETS
FED. ROAD DIST. NO. 7	ILLINOIS	FED. AID PROJECT			

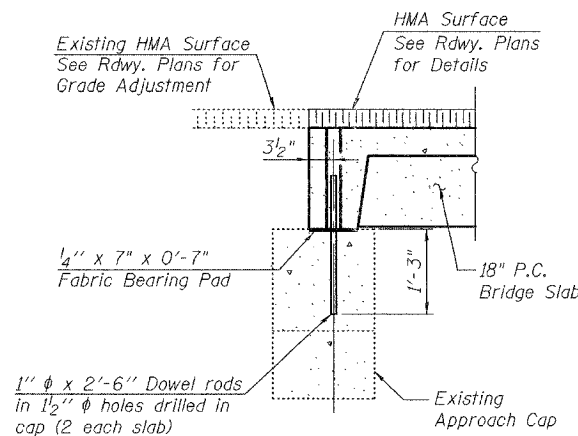
Contract #78033



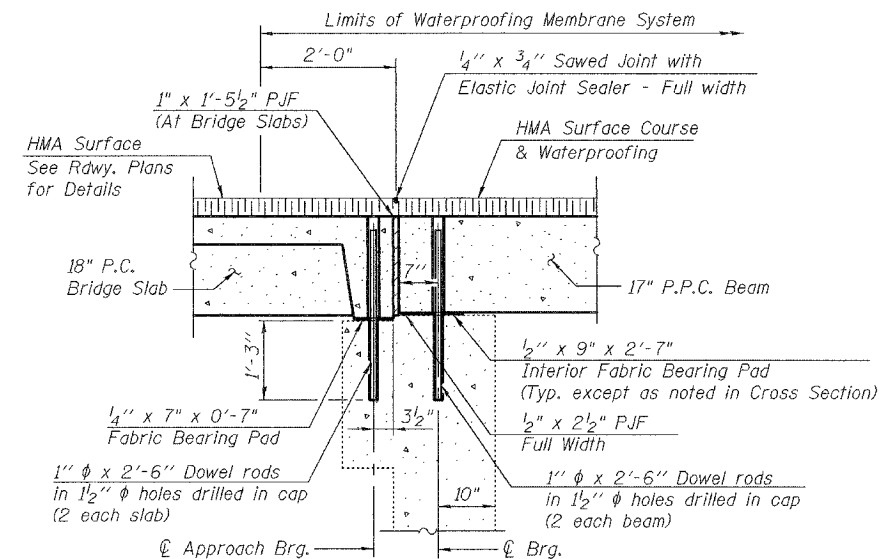
CROSS SECTION
(Looking Upstation)



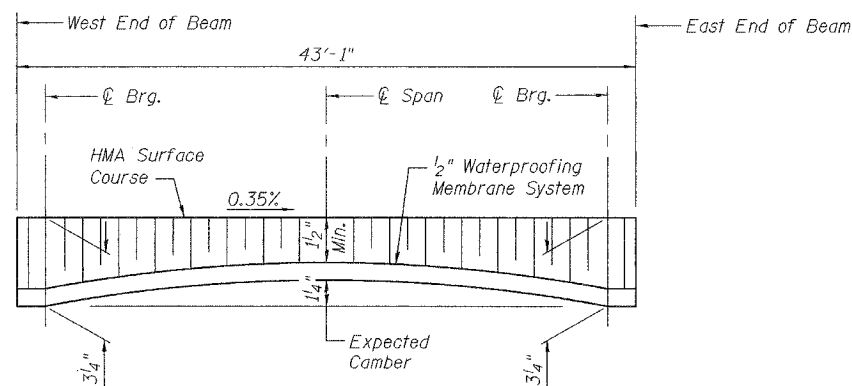
SECTION THRU ABUTMENT AT APPROACH SLAB



SECTION THRU APPROACH CAP



SECTION THRU ABUTMENT AT SHOULDER



HMA WEARING SURFACE PROFILE

Note:
Thickness on center beam will vary from those shown above at beam sides to 3/16" more at the profile grade.

BILL OF MATERIAL

Hot-Mix Asphalt Surface Course, Mix "C", N90	Ton	18
Waterproofing Membrane System	Sq. Yd.	173

Notes:
After beams have been erected, holes shall be drilled into substructure and anchor dowels placed. Dowel holes shall be filled with non-shrink grout to top of beam and allowed to cure min. 24 hrs. prior to grouting the shear keys. See Sheets 6 and 7 of 11 for bearing pad details. See Section 581 of the Standard Specifications for Waterproofing Membrane System. See Roadway Plans for HMA surface course, Mix "C", N90 mixture requirements. The HMA surface course shall be placed according to Section 582 of the Standard Specifications.

**SUPERSTRUCTURE DETAILS
SECTIONS AND JOINT DETAILS
ILL. ROUTE 146 OVER ROOT LICK BRANCH
F.A.P. ROUTE 885 - SECTION 111BR-2
POPE COUNTY
STATION 818+03.50
STRUCTURE NO. 076-0008**



DESIGNED	YSS
CHECKED	RLM
DRAWN	PRC
CHECKED	RLM

03/17/08