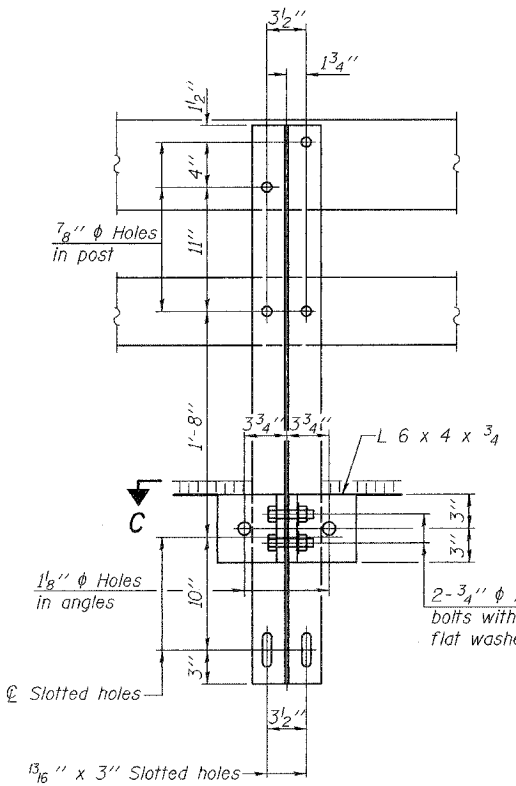
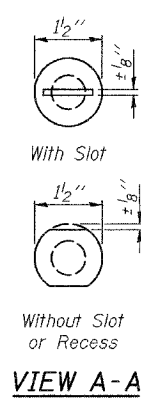
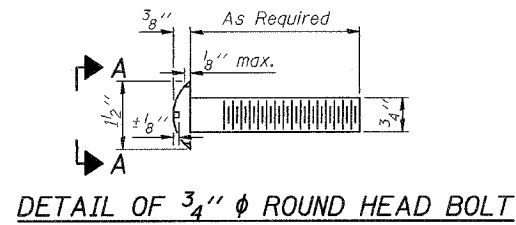


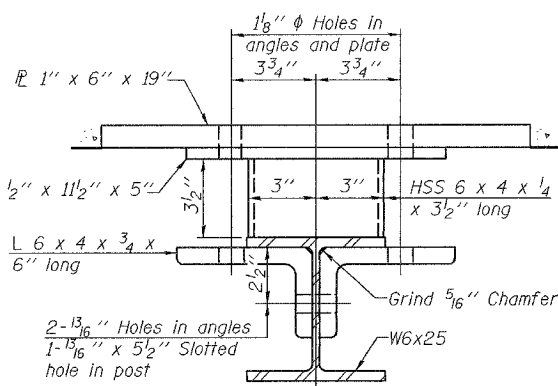
STATE OF ILLINOIS
DEPARTMENT OF TRANSPORTATION

ROUTE NO. F.A.P. 885	SECTION 111BR-2	COUNTY POPE	TOTAL SHEETS 69	SHEET NO. 57	SHEET NO. 11 SHEETS
FED. ROAD DIST. NO. 7		ILLINOIS	FED. ROAD PROJECT		

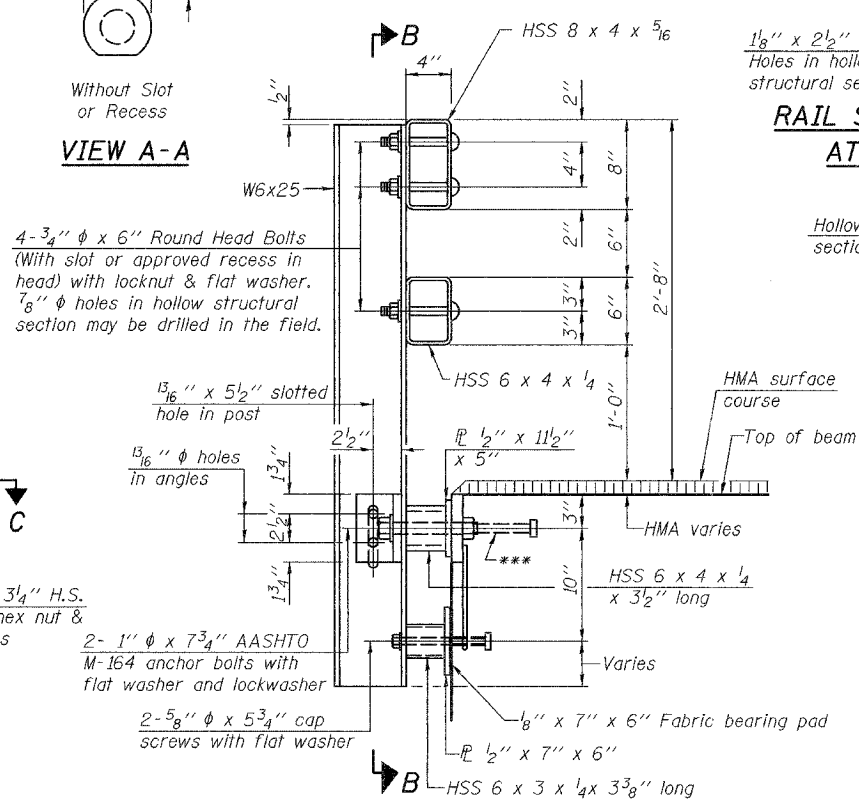
Contract #78033



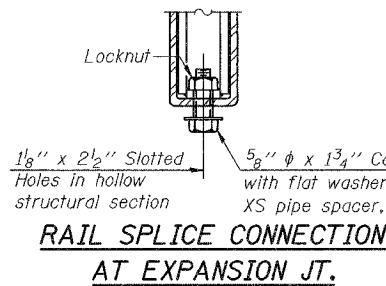
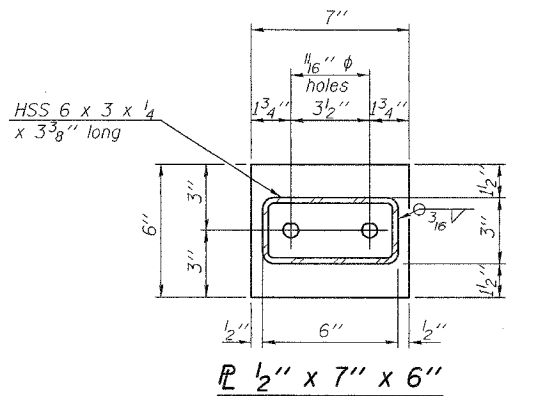
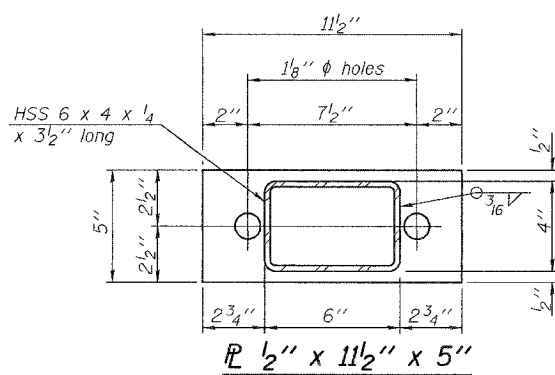
SECTION B-B



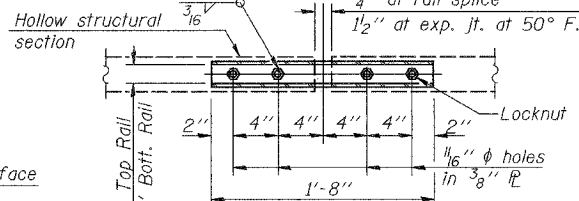
SECTION C-C



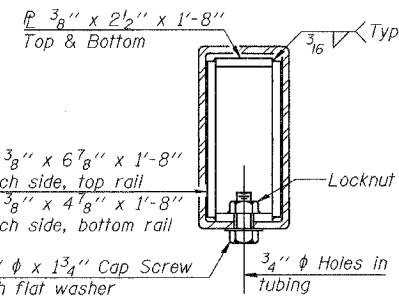
SECTION AT RAIL POST



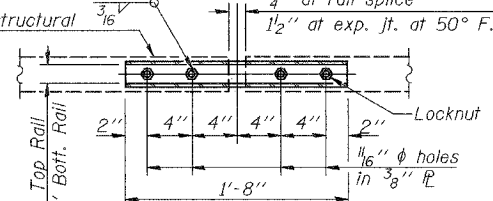
RAIL SPLICE CONNECTION
AT EXPANSION JT.



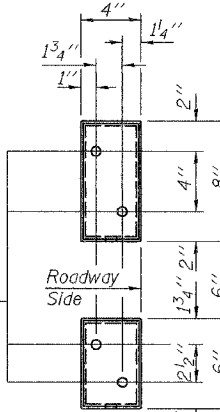
PLAN-BOTT. SPLICE AT
TYPICAL



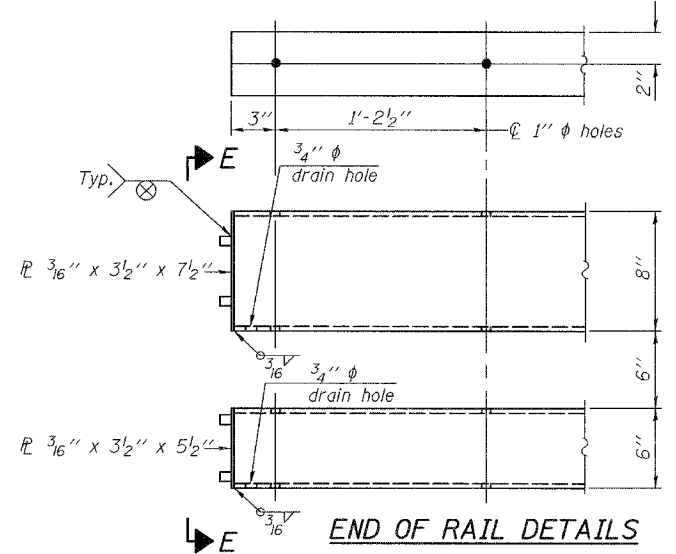
SECTION AT
RAIL SPLICE



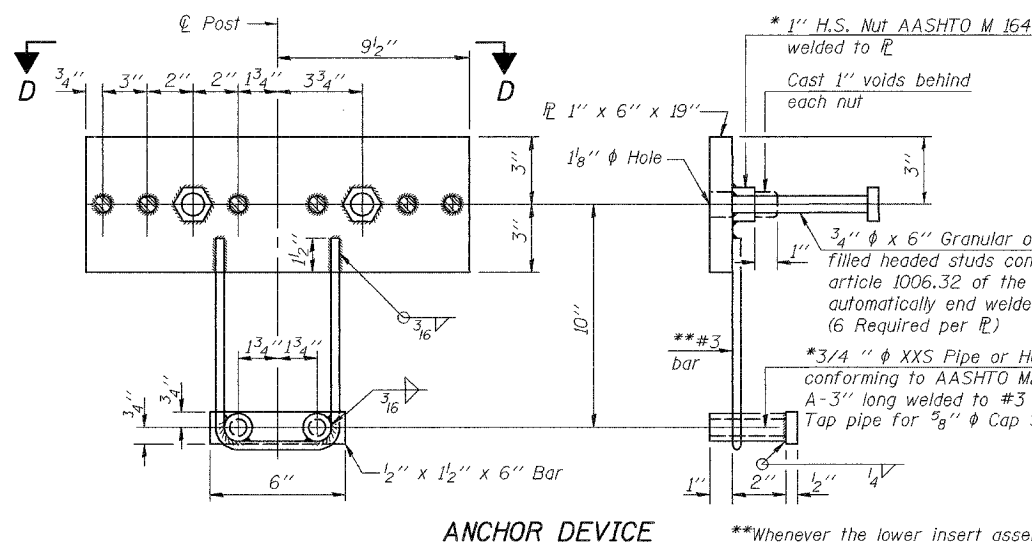
VIEW D-D



VIEW E-E



END OF RAIL DETAILS



ANCHOR DEVICE

Notes:
All field drilled holes shall be coated with an approved zinc rich paint before erection.
For multi-span bridges, sufficient 1/4" x 6" x 1'-2" galvanized steel shims shall be provided to align rail between adjacent spans. Cost included with Steel Railing, Type SM.
All steel rail members shall be galvanized according to Article 509.05 of the Standard Specifications.
***The studs of the anchor devices shall be placed below the top reinforcement bars and the outermost longitudinal reinforcement bar shall be placed directly above the studs of the rail post anchor device.
See Sheet 10 of 11 for rail post locations.

BILL OF MATERIAL

Item	Unit	Quantity
Steel Railing, Type SM	Foot	167

STEEL RAILING, TYPE SM
ILL. ROUTE 146 OVER ROOT LICK BRANCH
F.A.P. ROUTE 885 - SECTION 111BR-2
POPE COUNTY
STATION 818+03.50
STRUCTURE NO. 076-0008

**Whenever the lower insert assemblies interfere with strand locations, the #3 bars shall be cut and adjusted in order to allow raising or lowering of the lower inserts. Maximum adjustment not to exceed 1/2".

*Threaded areas shall be plugged or blocked off during casting of beam. Galvanized after fabrication.



DESIGNED	YSS
CHECKED	RLM
DRAWN	PRC
CHECKED	RLM

R-34HMAWS

9-3-07

(6'-3" Maximum Post Spacing) (1/4" minimum to 3/8" maximum HMA thickness)