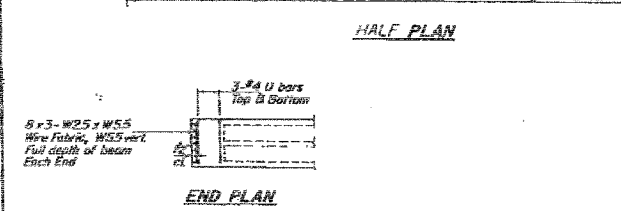
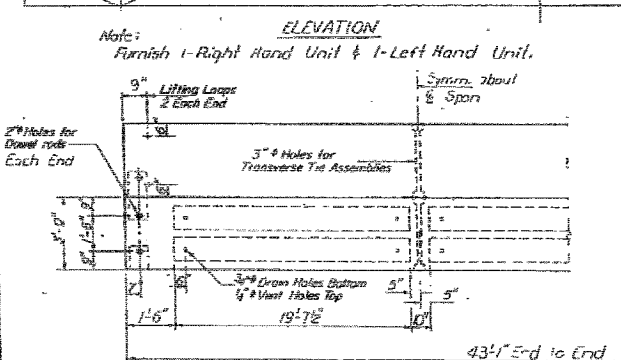
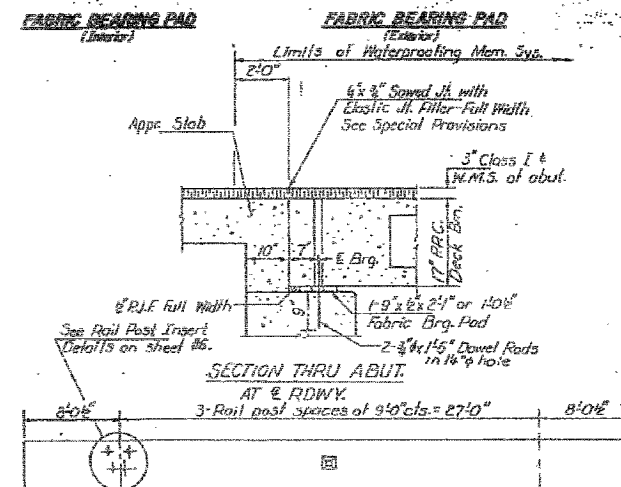
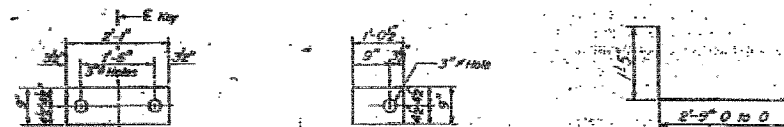
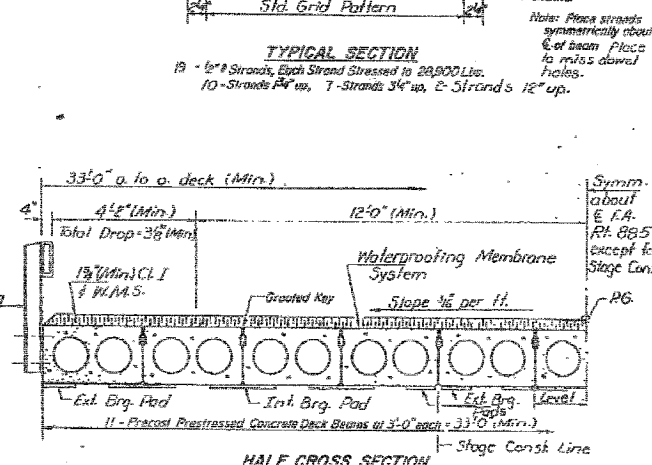
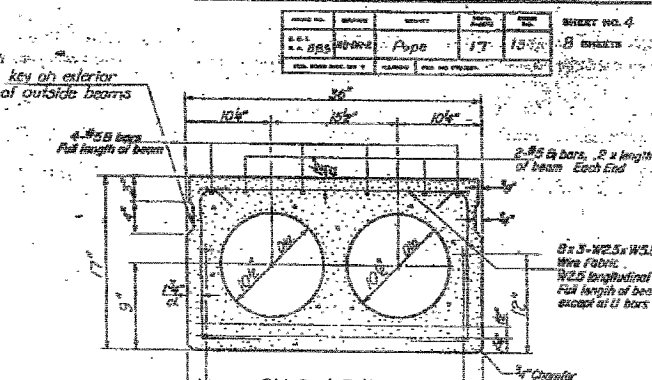
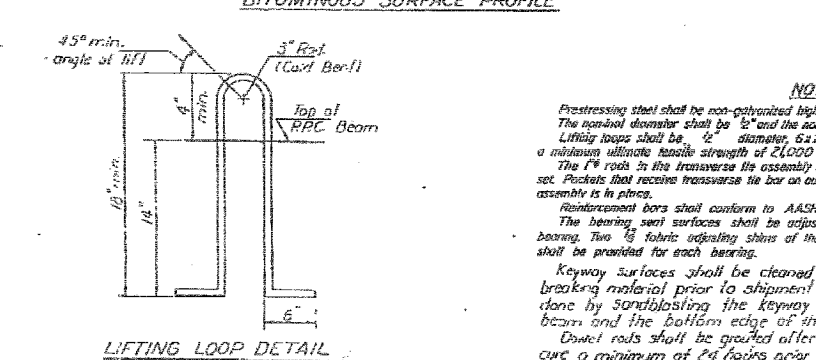
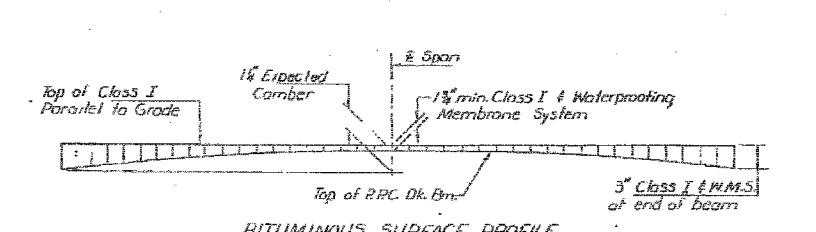
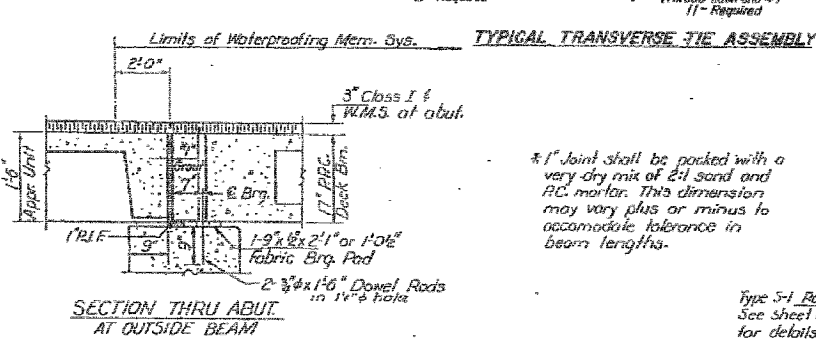
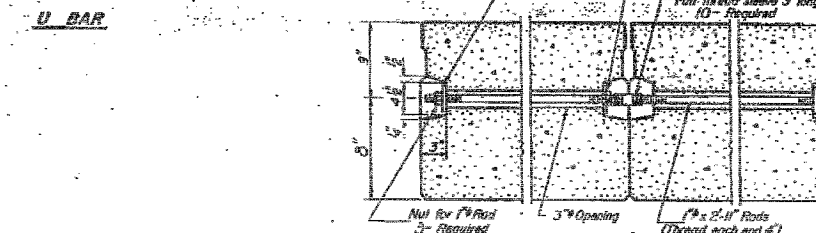


STATE OF ILLINOIS
DEPARTMENT OF TRANSPORTATION

PROJECT NO.	SECTION	SHEET NO.	TOTAL SHEETS
885	111B-2	17	61



DESIGNED	M.K.C. R.D. A.K.	DATE	August 25 1981
CHECKED	C.F.C. R.P.	EXAMINED	JAMES L. REYNOLDS
DRAWN	R. Lohy	PASSED	[Signature]
CHECKED	A.L.E. HILLMAN P.S.	APPROVED	[Signature]



*1" Joint shall be packed with a very dry mix of 2:1 sand and PC mortar. This dimension may vary plus or minus to accommodate tolerance in beam lengths.

Type S-I Rafting See Sheet #5 for details.

NOTES
 Prestressing steel shall be non-polymerized high strength, stress-relieved 7-wire strand, Grade 270. The nominal diameter shall be 1/2" and the nominal cross-sectional area shall be 0.153 sq. in. Lifting loops shall be 1/2" diameter, 6x25 class wire rope with fiber core and shall have a minimum ultimate tensile strength of 24,000 lbs. or 2-2 #270 bar strands. The 1/2" rods in the transverse tie assembly shall be tightened to a snug fit and the threads set. Pockets that receive transverse tie bar on outside shall be filled with grout after transverse tie assembly is in place. Reinforcement bars shall conform to AASHTO M-31 or M-53, Grade 60. The bearing seat surfaces shall be adjusted by shimming to assure firm and even bearing. Two 1/2" fabric utility shims of the dimensions of the Exterior Bearing Pad shall be provided for each bearing. Keyway surfaces shall be cleaned to remove form oil or other hard breaking material prior to shipment of the beams. Cleaning shall be done by sandblasting the keyway areas between the top of one beam and the bottom edge of the key. Dowel rods shall be grouted after beams are in place and allowed to cure a minimum of 24 hours prior to grouting the shear keys.

BILL OF MATERIAL		
Item	Unit	Total
Precast Prestressed Concrete Deck Beams (17" Depth)	Sq Ft	1422

SUPERSTRUCTURE
 FA. RT. 885 SEC. 111B-DR-2
 POPE COUNTY
 STA. 616+03.50



FOR INFORMATION ONLY

FILE NAME =	USER NAME = #USER#	DESIGNED - JHM	REVISED -	STATE OF ILLINOIS	EXISTING STRUCTURE PLANS	F.A.P. RTE. 885	SECTION 111B-2	COUNTY POPE	TOTAL SHEETS 69	SHEET NO. 61
#FILE#		DRAWN - AEC	REVISED -	DEPARTMENT OF TRANSPORTATION				CONTRACT NO. 78033		
	PLOT SCALE = #SCALE#	CHECKED - JMH	REVISED -		SCALE:	SHEET NO. OF SHEETS	STA. TO STA.	FED. ROAD DIST. NO. 7	ILLINOIS FED. AID PROJECT	
	PLOT DATE = #DATE#	DATE - 03/18/08	REVISED -							