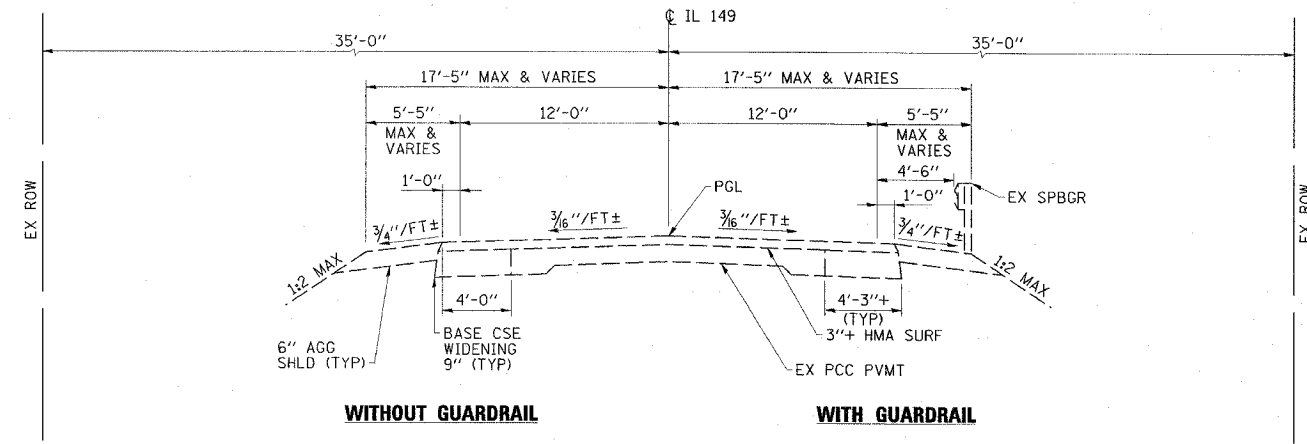
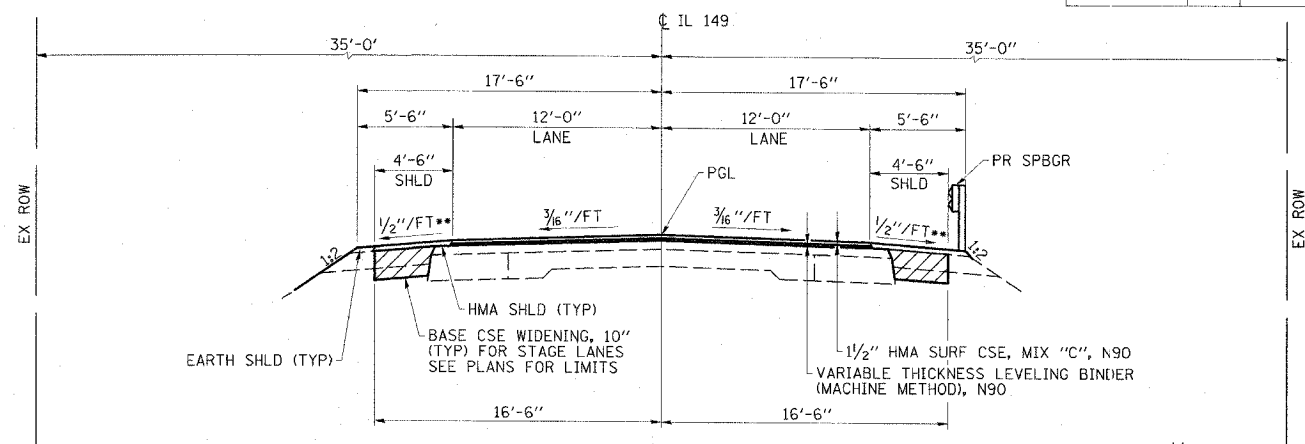




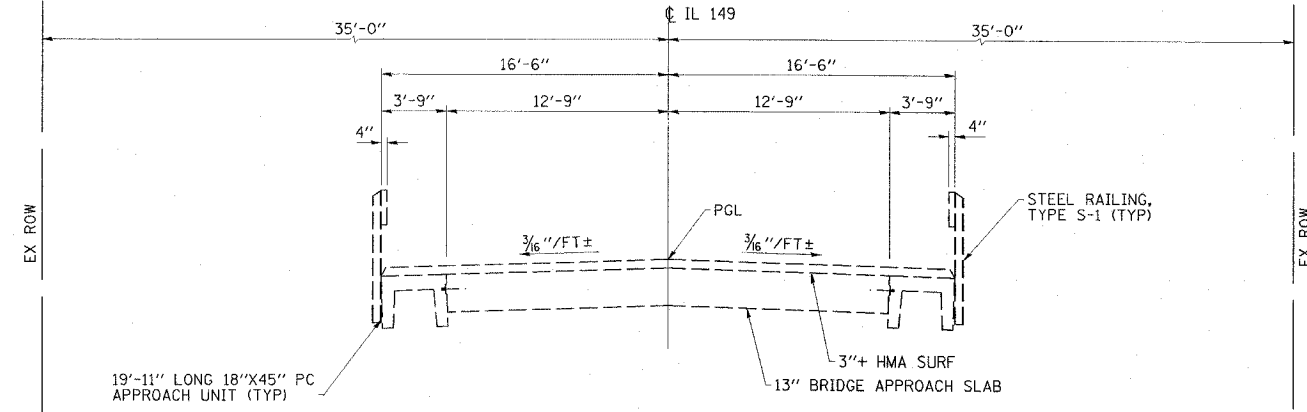
FAP RTE	SECTION	COUNTY	TOTAL SHEETS	SHEET NO.
873	107BR-1	FRANKLIN	73	4
STA.		TO STA.		
FED. RD/D DIST. NO.		ILLINOIS FED. AID PROJECT		



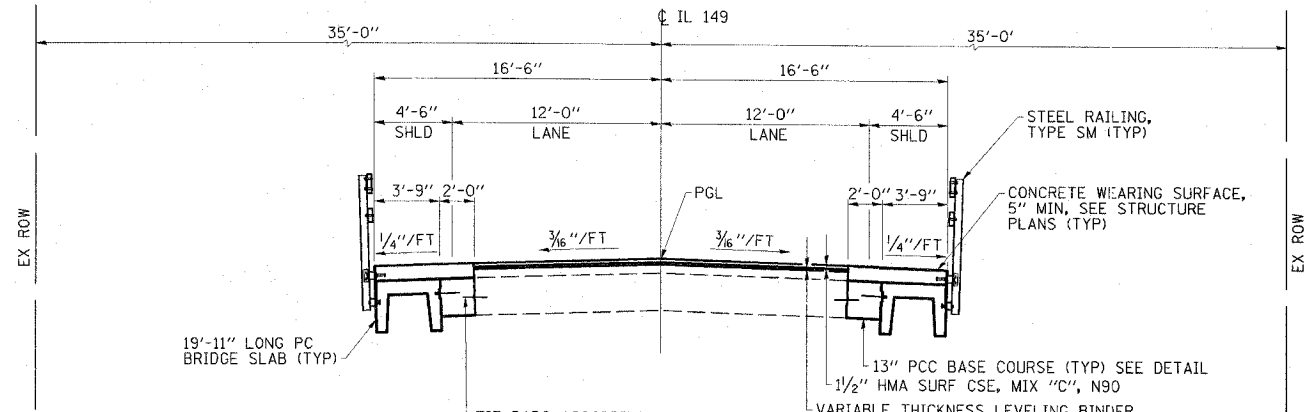
EXISTING TYPICAL ROADWAY SECTION
 STA 1057+00.00 TO 1063+00.00
 OMISSION STA 1060+03.83 TO 1060+87.21



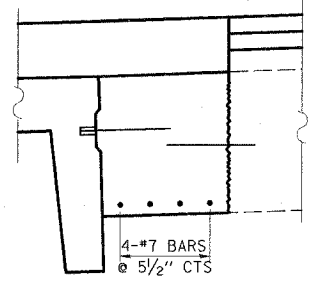
PROPOSED TYPICAL ROADWAY SECTION
 STA 1059+03.00 TO 1060+03.83 AND STA 1060+87.21 TO 1061+98.00
 ** TRANSITION TO 1/4"/FT NEAR BRIDGE APPROACHES



EXISTING BRIDGE APPROACH SECTION
 STA 1060+03.83 TO 1060+87.21
 BRIDGE OMISSION 1060+24.50 TO 1060+67.50



PROPOSED BRIDGE APPROACH SECTION
 STA 1060+03.83 TO 1060+87.21
 BRIDGE OMISSION 1060+24.50 TO 1060+67.50



PCC BASE COURSE DETAIL

HMA MIXTURES REQUIREMENTS

LOCATION(S):	HOT MIX ASPHALT SURFACE COURSE AND LEVELING BINDER	BASE COURSE WIDENING	HOT MIX ASPHALT SHOULDERS
MIXTURE USE(S):	HOT MIX ASPHALT SURFACE COURSE, MIX C, N90	HOT MIX ASPHALT BINDER COURSE, N90, IL-19.0	HOT MIX ASPHALT SHOULDERS
AC/PG:	PG64-22	PG64-22	PG58-22
RAP % (MAX): ***	10	10	50
DESIGN AIR VOIDS:	4.0%, 90 GYRATION DESIGN	4.0%, 90 GYRATION DESIGN	2.0%, 30 GYRATION DESIGN
MIXTURE COMPOSITION: (GRADATION MIXTURE)	IL-9.5 OR IL-12.5	IL-19.0	HMA SHOULDERS
FRICTION AGGREGATE:	C SURFACE	NONE	NONE

*** IF RAP OPTION IS SELECTED, THE ASPHALT CEMENT GRADE MAY NEED TO BE ADJUSTED. THIS WILL BE DETERMINED BY THE ENGINEER.

ESCA
 CONSULTANTS, INC.
 DESIGNED BY: DAJ 02/08
 DRAWN BY: CJ/HAS 02/08
 CHECKED BY: MTD 03/08
 APPROVED BY: RDP 04/08

TYPICAL SECTIONS
 FAP RTE 873 (IL 149)
 SECTION 107BR-1
 FRANKLIN COUNTY