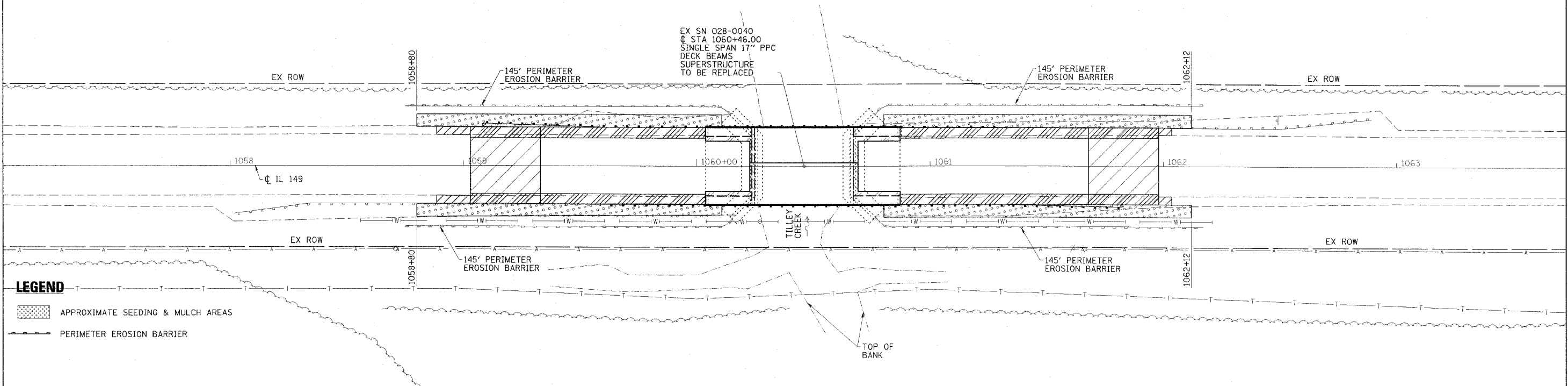


CONTRACT NO. 78034				
FAP RTE	SECTION	COUNTY	TOTAL SHEETS	SHEET NO.
873	107BR-1	FRANKLIN	73	10
STA. 1057+00		TO STA. 1063+00		
FED. ROAD DIST. NO.	ILLINOIS	FED. AID PROJECT		



LEGEND

- APPROXIMATE SEEDING & MULCH AREAS
- PERIMETER EROSION BARRIER

ESCA
CONSULTANTS, INC.

DESIGNED BY:	DAJ	02/08
DRAWN BY:	CJ/HAS	02/08
CHECKED BY:	MTD	03/08
APPROVED BY:	RDP	04/08

*EROSION CONTROL
AND DRAINAGE PLAN
FAP RTE 873 (IL 149)
SECTION 107BR-1
FRANKLIN COUNTY*

PLOT DATE * DATE *
FILE NAME * FILE *
PLOT SCALE * SCALE *
REFERENCE * REF *