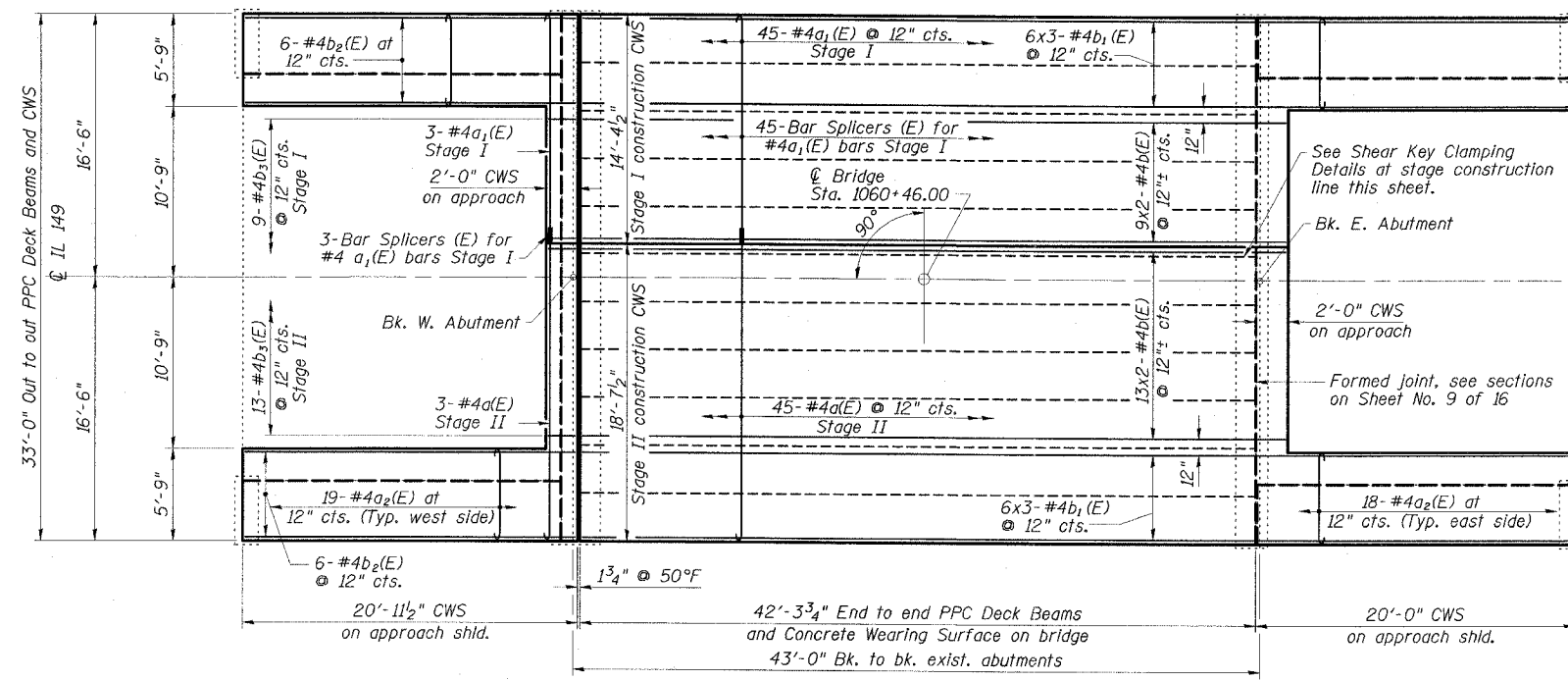


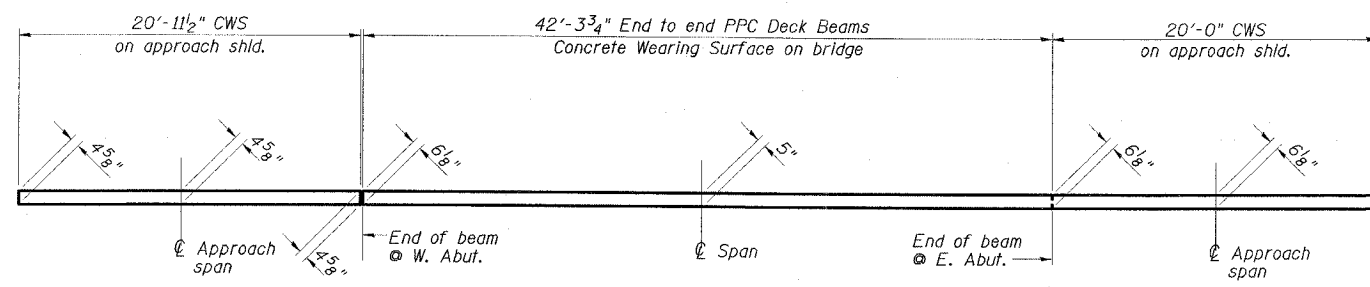
STATE OF ILLINOIS
DEPARTMENT OF TRANSPORTATION

ROUTE NO.	SECTION	COUNTY	SHEET	SHEET NO.
FAP 873	107BR-1	FRANKLIN	73	16
FED. ROAD DIST. NO. 11				ILLINOIS
FED. AID PROJECT				78034

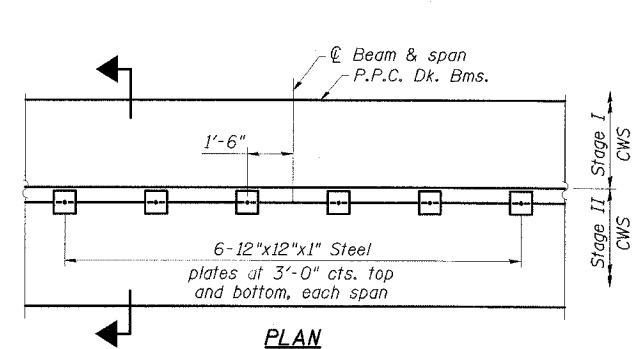
16 SHEETS



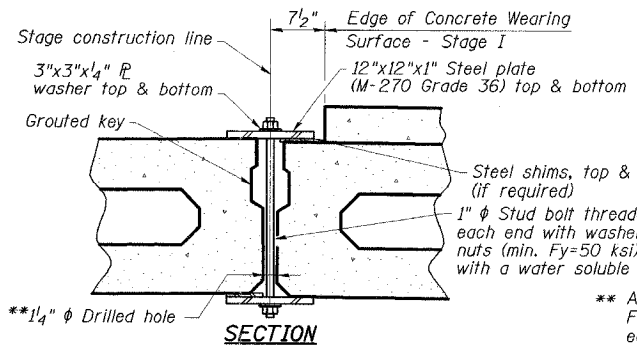
PLAN-WEARING SURFACE



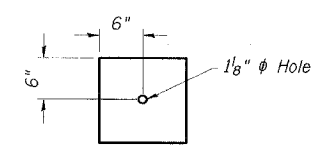
REINFORCED CONCRETE WEARING SURFACE PROFILE
(At edge of bridge deck)



PLAN



SECTION SHEAR KEY CLAMPING DETAILS



CLAMPING PLATE

Note: See Stage Construction Details for traffic lanes. Cost is included with Precast Prestressed Deck Beams.

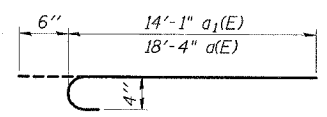
** As an alternate to the drilled holes, the Contractor may request the Fabricator to cast 2" diameter semi-circular recesses in the sides of each beam adjacent to the stage construction line. These recesses should align to form a hole at the appropriate location for the clamping device bolts. If the Contractor elects to use this alternate, the details shall be identified on the shop drawings.

CONCRETE WEARING SURFACE
BILL OF MATERIAL

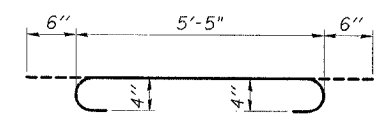
Bar	No.	Size	Length	Shape
a(E)	48	#4	18'-10"	U
a ₁ (E)	48	#4	14'-7"	U
a ₂ (E)	74	#4	6'-5"	U
b(E)	44	#4	23'-0"	—
b ₁ (E)	36	#4	21'-10"	—
b ₂ (E)	12	#4	20'-8"	—
b ₃ (E)	22	#4	1'-8"	—
Reinforcement Bars, Epoxy Coated		Pound	2780	
Concrete Wearing Surface, 5"		Sq. Yd.	217	
Bridge Deck Grooving		Sq. Yd.	199	
Bar Splicers		Each	48	
Protective Coat		Sq. Yd.	217	

MIN. BAR LAP
#4 bar = 1'-8"

Note: Reinforcement bars designated (E) shall be epoxy coated. Bars indicated thus 13x2-#4 etc, indicates 13 lines of bars with 2 lengths per line. For remainder of superstructure details, see Sheet Nos. 6 thru 9 of 16.



BARS a(E) & a₁(E)



BAR a₂(E)

Note: Greater thickness is required at centerline of superstructure to conform to cross section slopes shown on Sheet No. 7 of 16.

ESCA
CONSULTANTS, INC.

DESIGNED BY:	ELH	02/08
DRAWN BY:	HAS	02/08
CHECKED BY:	JMS	02/08
APPROVED BY:	RDP	02/08

SUPERSTRUCTURE
IL 149 OVER TILLEY CREEK
FAP ROUTE 873 - SECTION 107BR-1
FRANKLIN COUNTY
STATION 1060+46.00
STRUCTURE NO. 028-0040