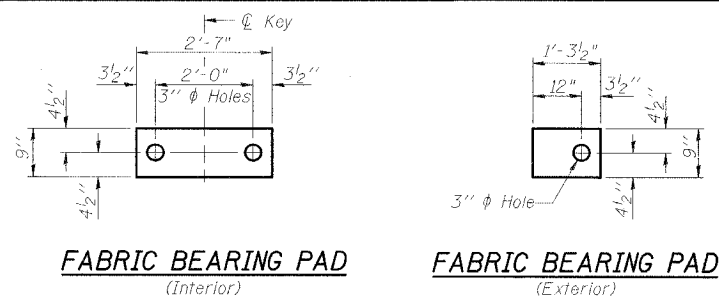


STATE OF ILLINOIS
DEPARTMENT OF TRANSPORTATION

PROJECT NO.	SECTION	COUNTY	DATE	SHEET NO.
FAP 873	107BR-1	FRANKLIN	73	18
FED. ROAD DIST. NO.	ILLINOIS	FED. AID PROJECT		

78034

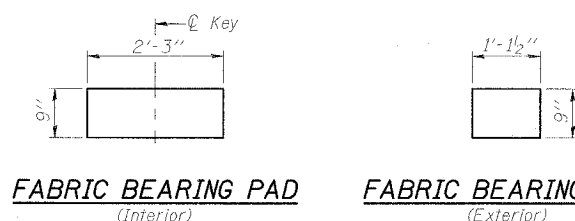
SHEET NO. 7
16 SHEETS



FABRIC BEARING PAD
(Interior)

FABRIC BEARING PAD
(Exterior)

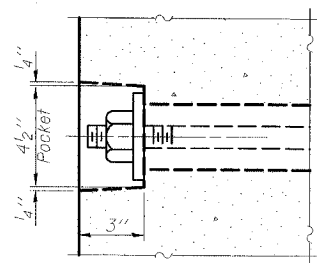
FIXED



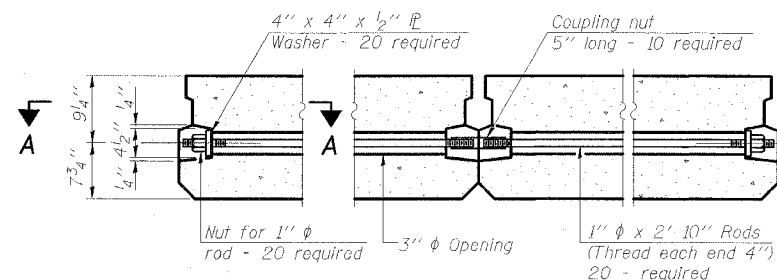
FABRIC BEARING PAD
(Interior)

FABRIC BEARING PAD
(Exterior)

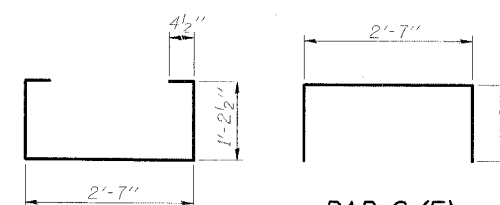
EXPANSION



SECTION A-A

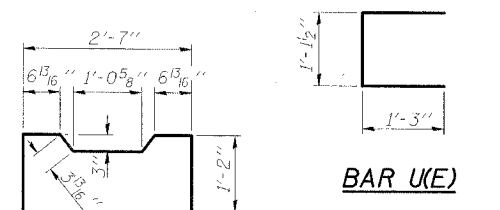


TYPICAL TRANSVERSE TIE ASSEMBLY



BAR S(E)

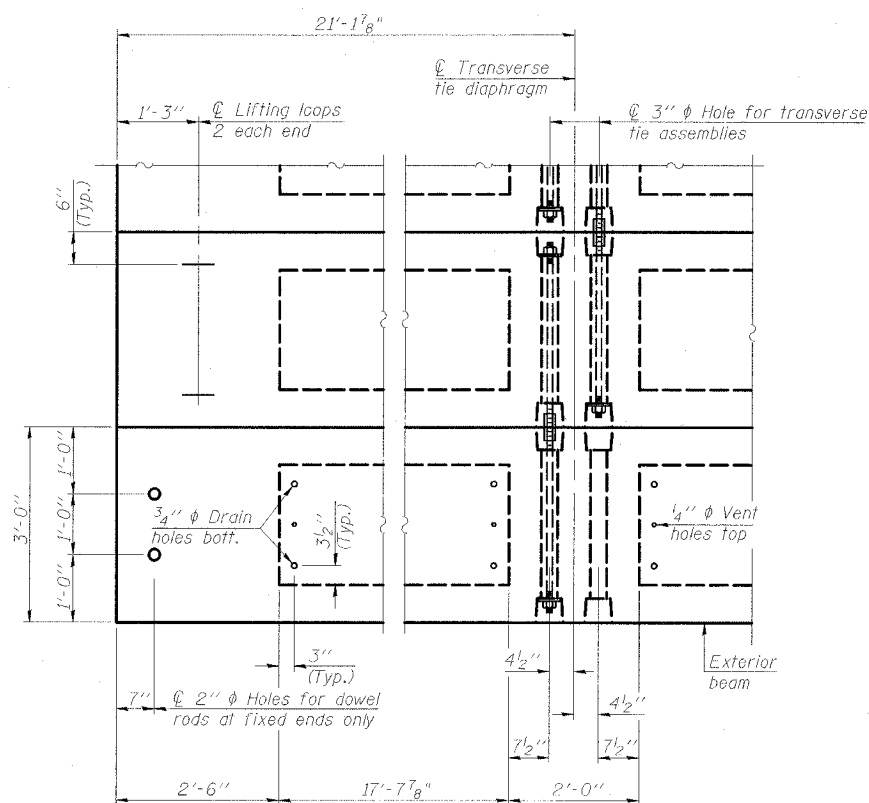
BAR S₁(E)



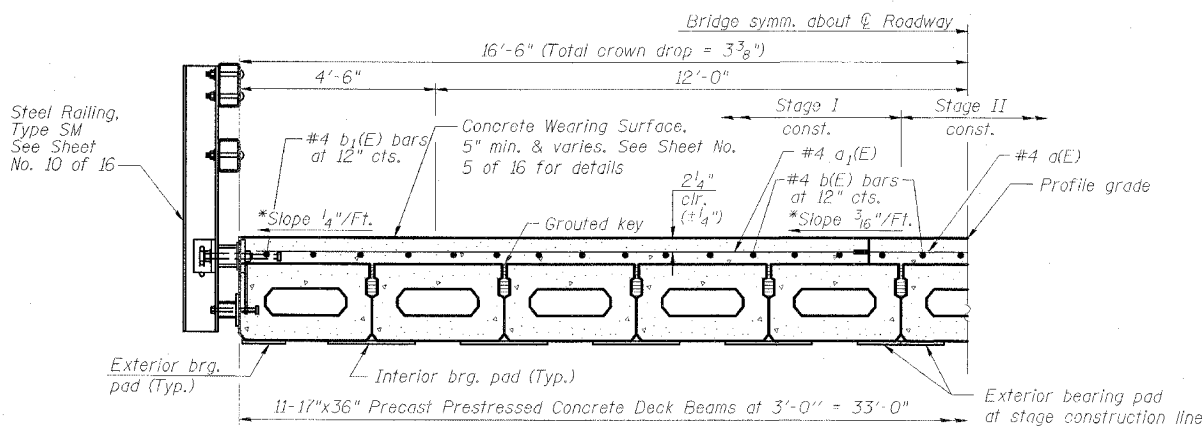
BAR S₂(E)

BAR U(E)

BAR U₁(E)

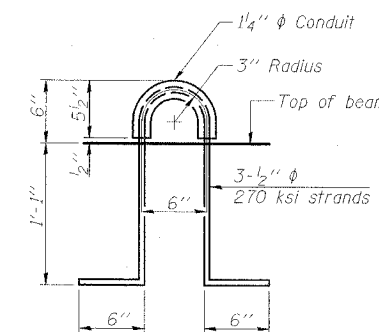


PLAN VIEW



HALF CROSS SECTION
(Looking East)

*Cross slopes shown are applicable to CWS



LIFTING LOOP DETAIL

BILL OF MATERIAL

Item	Unit	Quantity
Precast Prestressed Conc. Deck Bms. (17" Depth)	Sq. Ft.	1397

NOTES

- Prestressing steel shall be uncoated high strength, low relaxation 7-wire strand, Grade 270. The nominal diameter shall be 1/2" and the nominal cross-sectional area shall be 0.153 sq. in.
- The 1" diameter rods in the transverse tie assembly shall be tightened to a snug fit and the threads set. Pockets on exterior faces of bridge shall be filled with grout after transverse tie assembly is in place.
- Reinforcement bars shall conform to ASTM A 706 (IL MOD), Grade 60. (See Special Provisions)
- Two 1/8" fabric adjusting shims of the dimensions of the exterior bearing pad shall be provided for each bearing pad location.
- A minimum 2 1/2" diameter lifting pin shall be used to engage the lifting loops during handling.
- Corrosion inhibitor, per Article 1020.05(b)(12) and 1021.06 of the Standard Specifications, shall be used in the concrete for precast prestressed concrete deck beams.
- Compressive strength of prestressed concrete, f'c, shall be 6000 psi.
- Compressive strength of prestressed concrete at release, f'cl, shall be 5000 psi.
- See Sheet No. 2 of 16 for location of rail anchors and additional notes.

Note: Connect beams in pairs with the transverse tie configuration shown.

ESCA
CONSULTANTS, INC.

DESIGNED BY:	ELH	02/08
DRAWN BY:	HAS	02/08
CHECKED BY:	JMS	04/08
APPROVED BY:	RDP	04/08

SUPERSTRUCTURE DETAILS
IL 149 OVER TILLEY CREEK
FAP ROUTE 873 - SECTION 107BR-1
FRANKLIN COUNTY
STATION 1060+46.00
STRUCTURE NO. 028-0040