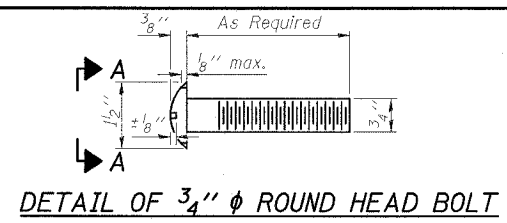
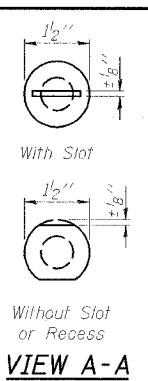


STATE OF ILLINOIS
DEPARTMENT OF TRANSPORTATION

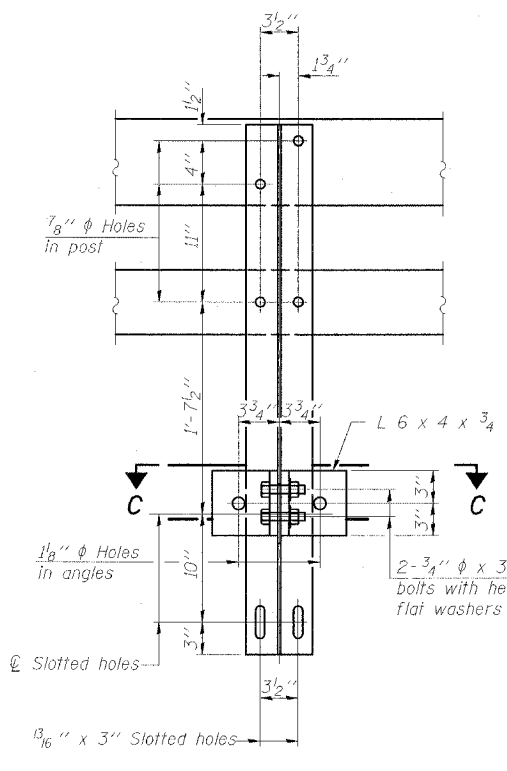
ROUTE NO.	SECTION	COUNTY	DATE	SHEET	SHEET NO. 10 16 SHEETS
FAP 873	107BR-1	FRANKLIN	73	21	
FED. ROAD DIST. NO. 9 ILLINOIS FED. AID PROJECT: 78034					



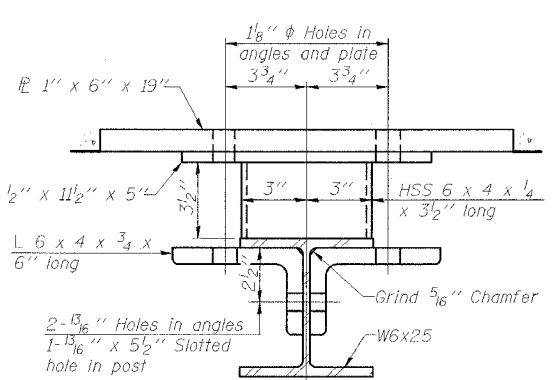
DETAIL OF 3/4" ϕ ROUND HEAD BOLT



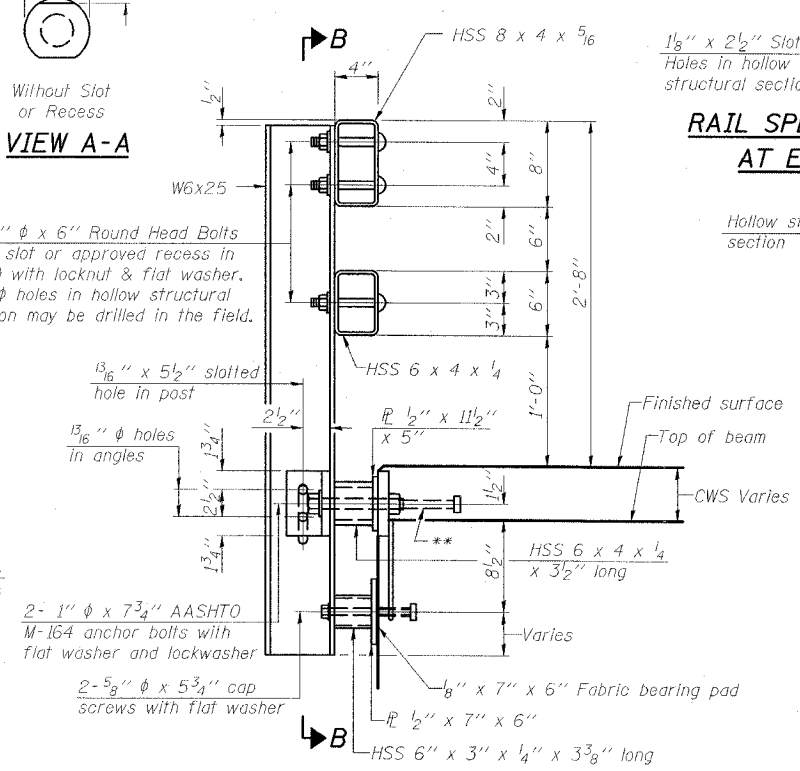
VIEW A-A



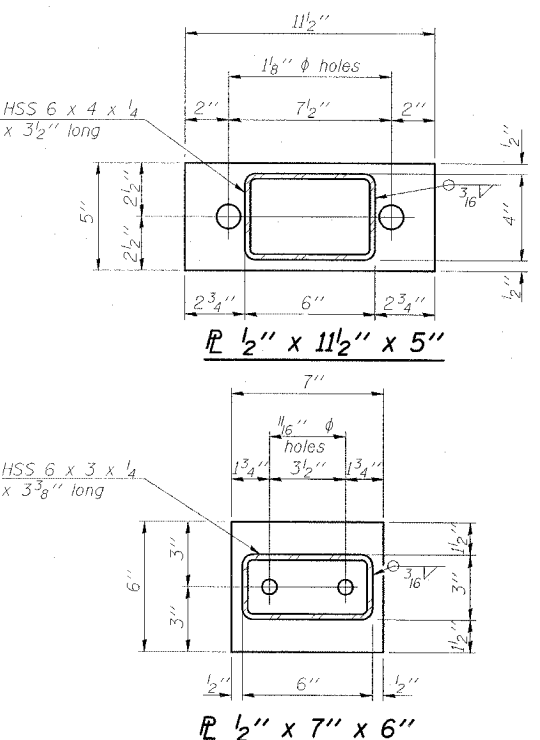
SECTION B-B



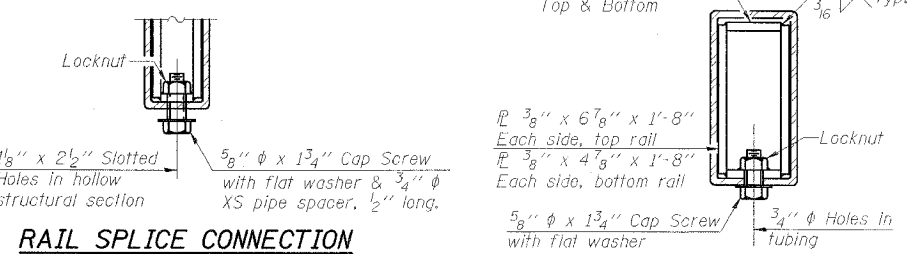
SECTION C-C



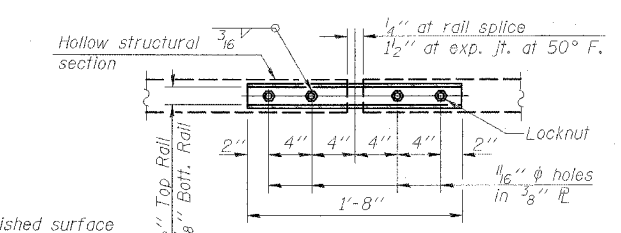
SECTION AT RAIL POST



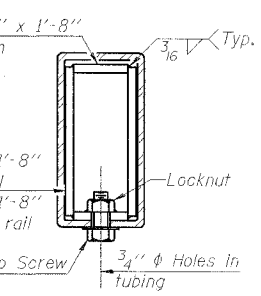
ANCHOR DEVICE



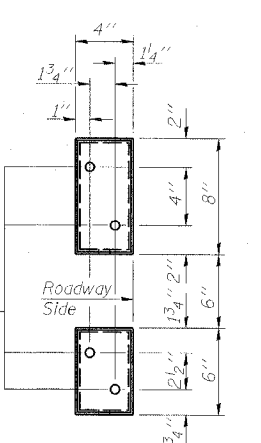
RAIL SPLICE CONNECTION AT EXPANSION JT.



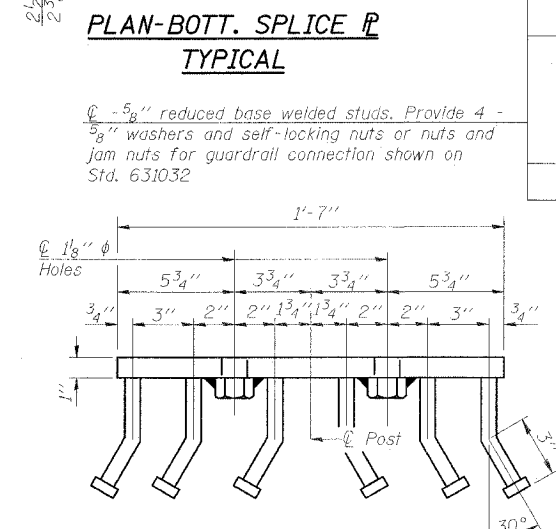
PLAN-BOTT. SPLICE R TYPICAL



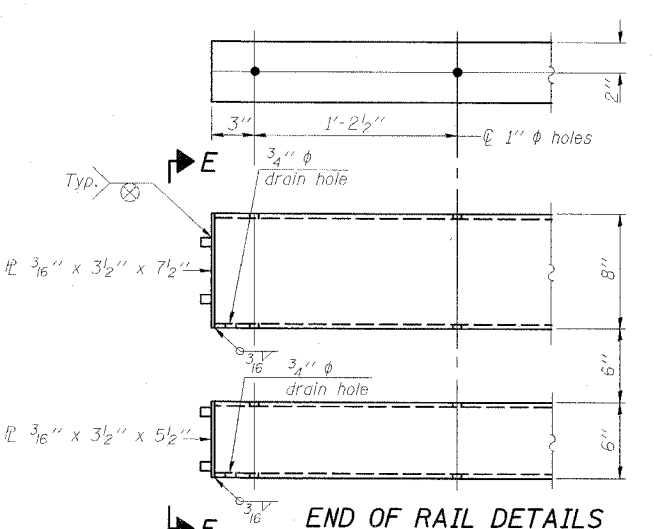
SECTION AT RAIL SPLICE



VIEW E-E



VIEW D-D



END OF RAIL DETAILS

Notes:
 All field drilled holes shall be coated with an approved zinc rich paint before erection.
 For multi-span bridges, sufficient 1/4" x 6" x 1'-2" galvanized steel shims shall be provided to align rail between adjacent spans. Cost included with Steel Railing, Type SM.
 Steel rail elements shall be galvanized according to Article 509.05 of the Standard Specifications.
 **The studs of the anchor devices shall be placed below the top reinforcement bars and the outermost longitudinal reinforcement bar shall be placed directly above the studs of the rail post anchor device.

BILL OF MATERIAL

Item	Unit	Quantity
Steel Railing, Type SM	Foot	167

STEEL RAILING, TYPE SM
 IL 149 OVER TILLEY CREEK
 FAP ROUTE 873 - SECTION 107BR-1
 FRANKLIN COUNTY
 STATION 1060+46.00
 STRUCTURE NO. 028-0040

ESCA
CONSULTANTS, INC.

DESIGNED BY:	ELH	02/08
DRAWN BY:	HAS	02/08
CHECKED BY:	JMS	02/08
APPROVED BY:	RDP	02/08

(6'-3" Maximum Post Spacing) (5" minimum to 7/8" maximum CWS thickness)

*Threaded areas shall be plugged or blocked off during casting of beam. Galvanized after fabrication.