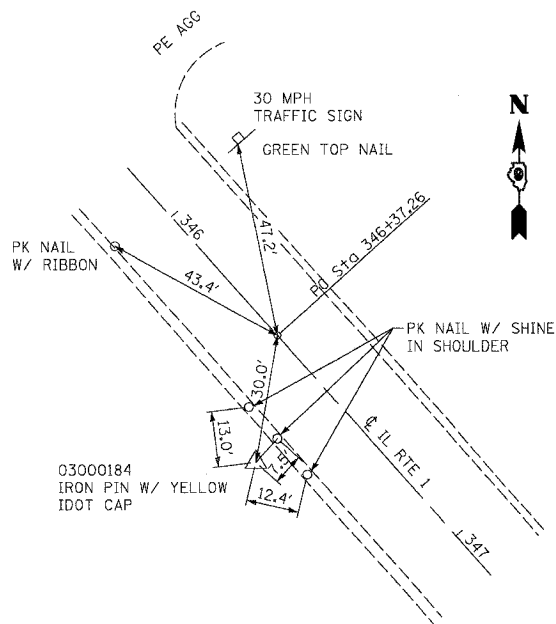
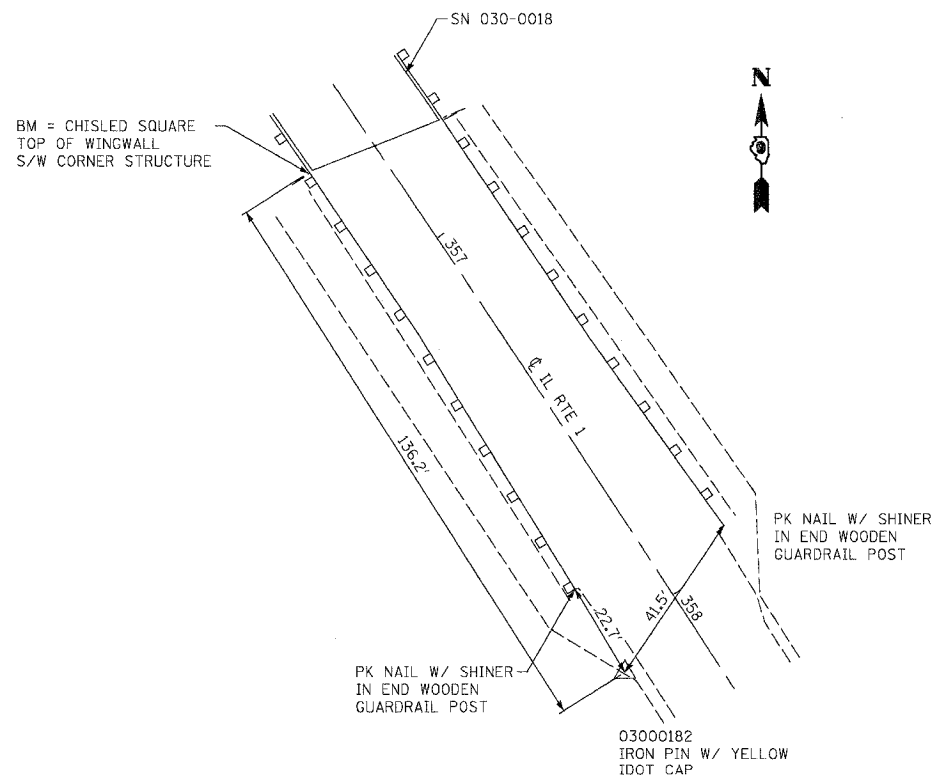
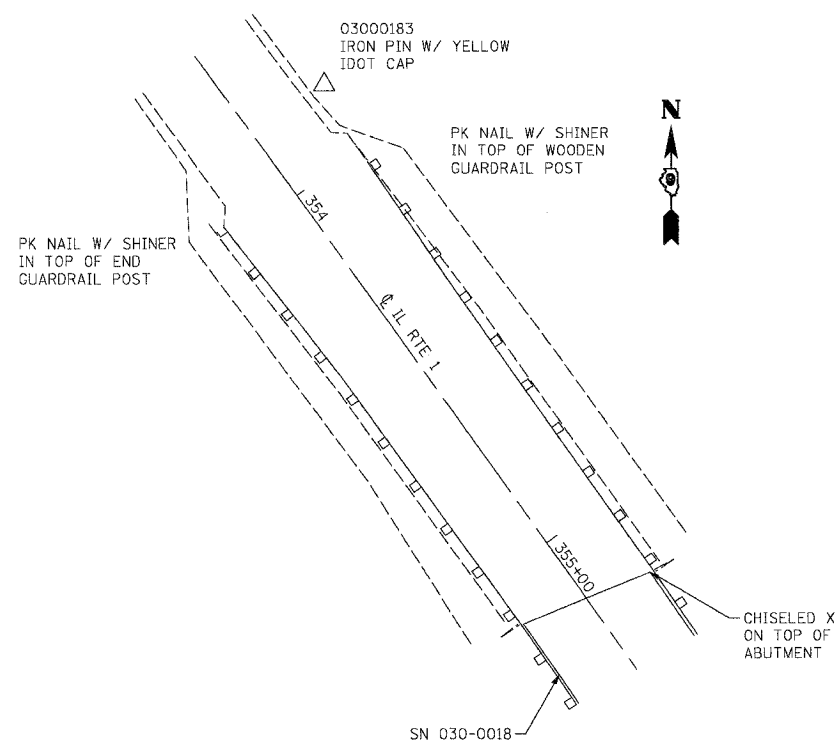
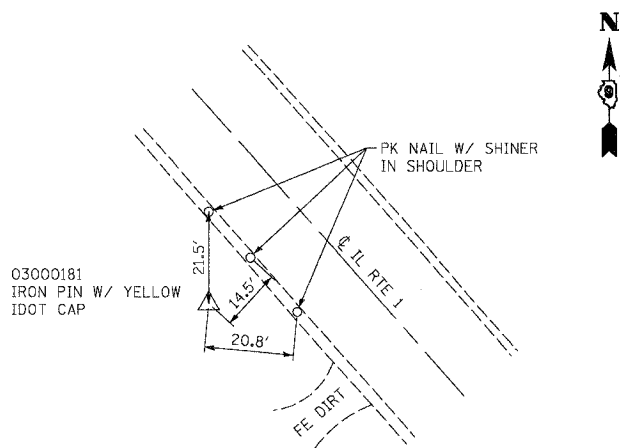
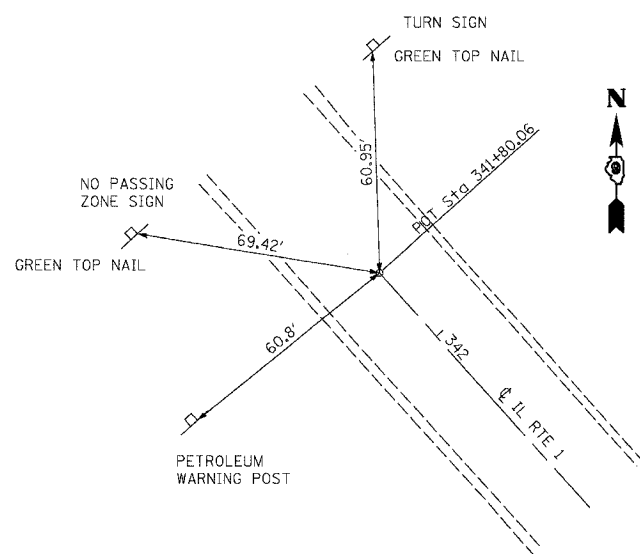


F.A. RTE.	SECTION	COUNTY	TOTAL SHEETS	SHEET NO.
782	111BR-1	GALLATIN	73	45
STA.		TO STA.		
FED. ROAD DIST. NO.		ILLINOIS FED. AID PROJECT		



**BENCHMARKS**  
 CW-17 ELEVATION 367.142 "88" ADJUSTED  
 10.0 MILES NORTH OF INT., WEST SIDE OF  
 RTE 1, CHISELED SQUARE ON S.W. WINGWALL  
 OF STRUCTURE NO 030-0018  
 CW-18 ELEVATION 362.423 "88" ADJUSTED  
 10.2 MILES NORTH OF INT., WEST SIDE OF RTE 1,  
 CHISELED SQUARE IN NORTH END OF CULVERT  
 HEADWALL STRUCTURE NO 030-7010

PLOT DATE = 04/17/2009  
 FILE NAME = h:\87\77856\07266-1\03\111BR-1.dgn  
 PLOT SCALE = 20.4187 / IN.  
 USER NAME = CFC

**COOMBE-BLOXDORF P.C.**  
 Engineers / Land Surveyors  
 Springfield, Illinois  
 Design Firm License No. 184-002703

REVISIONS	
NAME	DATE

ILLINOIS DEPARTMENT OF TRANSPORTATION  
 BENCHMARKS AND CROSS-TIES  
 IL ROUTE 1 OVER CANE CREEK  
 FA ROUTE 782 SECTION 111BR-1  
 GALLATIN COUNTY  
 SCALE: NTS  
 DATE: \_\_\_\_\_  
 DRAWN BY CFC  
 CHECKED BY MCB