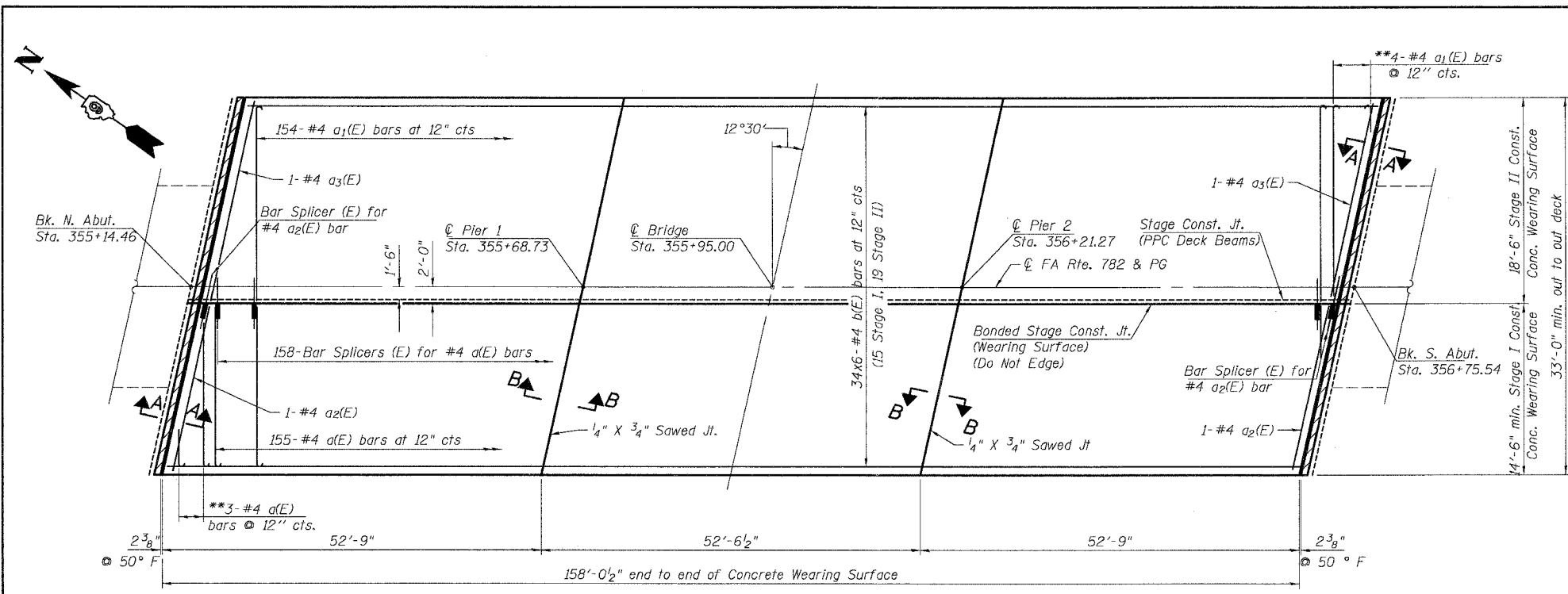


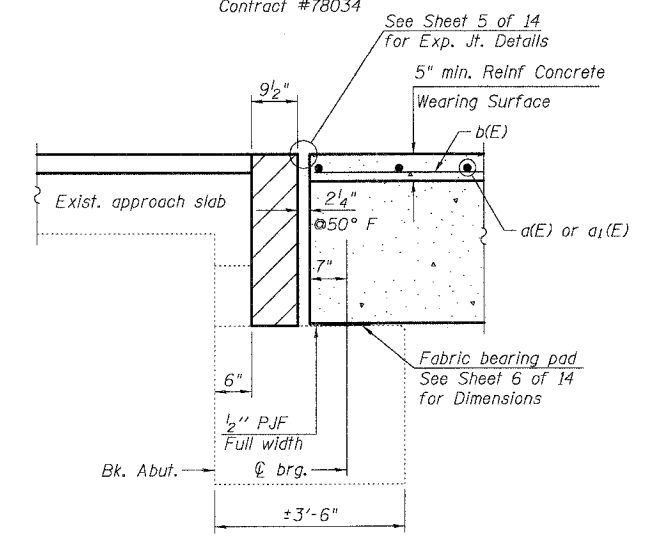
ROUTE NO.	SECTION	COUNTY	TOTAL SHEETS	SHEET NO.
FA 782	11BR-1	GALLATIN	73	53
FED. ROAD DIST. NO. 7	ILLINOIS	FED. AID PROJECT-		

SHEET NO. 4  
14 SHEETS

Contract #78034



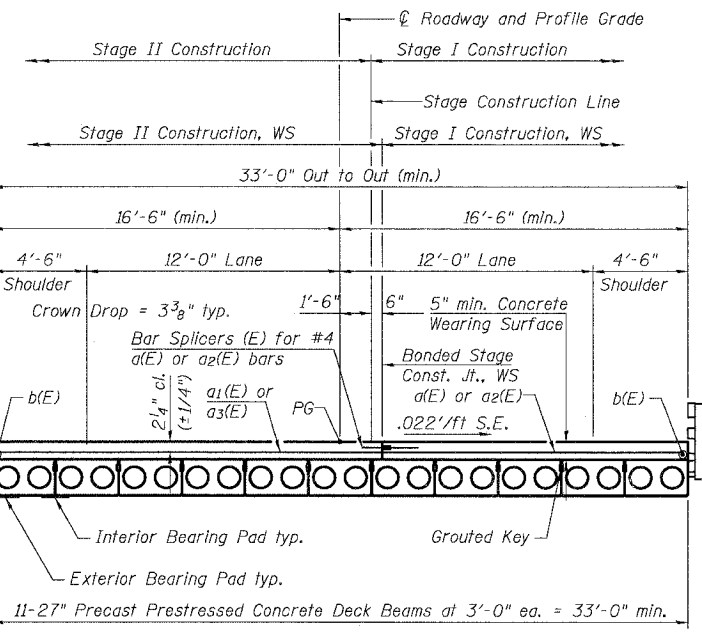
**PLAN**  
(Concrete Wearing Surface)



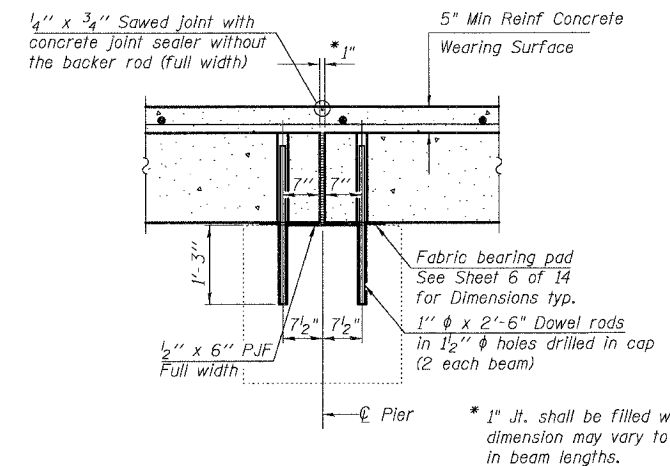
**SECTION A-A**  
(Dim at right angles)

**NOTES**

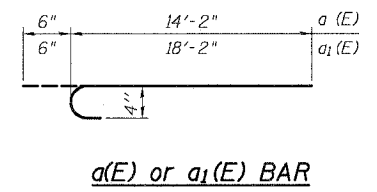
For details of hatched area see Sheet 10 of 14.  
After beams have been erected, holes shall be drilled into substructure and anchor dowels placed. Dowel holes shall be filled with non-shrink grout to top of beam and allowed to cure min. 24 hrs. prior to grouting the shear keys.  
The 5" wearing surface shall be poured after the beams are erected and the joints have been grouted.  
See Sheet 2 & 8 of 14 for rail details.  
See Sheet 14 of 14 for bar splicer details.



**CROSS SECTION**  
(Looking Southeast)



**SECTION B-B**  
(Dim at right angles)



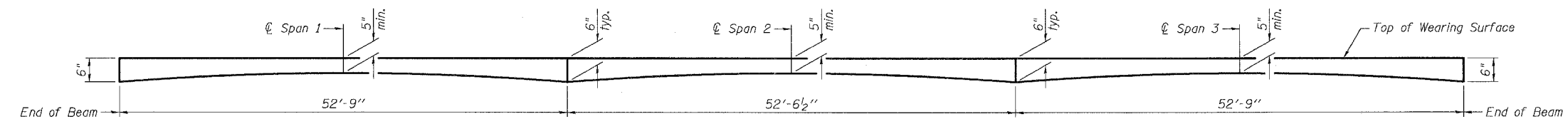
**MIN LAP LENGTH**  
#4 Bars = 1'-4"

**SUPERSTRUCTURE  
BILL OF MATERIAL**

Bar	No.	Size	Length	Shape
a(E)	158	#4	14'-8"	—
a <sub>1</sub> (E)	158	#4	18'-8"	—
a <sub>2</sub> (E)	2	#4	14'-6"	—
a <sub>3</sub> (E)	2	#4	18'-7"	—
b(E)	204	#4	27'-5"	—
Concrete Wearing Surface, 5"		Sq. Yds.	580	
Reinforcement Bars, Epoxy Coated		Lbs.	7300	
Bar Splicers		Each	160	

Bars indicated thus 34x6-#4 etc. indicates 34 lines of bars with 6 lengths per line.

**SUPERSTRUCTURE  
F.A. RT. 782 SECTION 11BR-1  
GALLATIN COUNTY  
STATION 355+95.00  
STRUCTURE NO. 030-0018**



**REINFORCED CONCRETE WEARING SURFACE PROFILE**

**COOMBE-BLOXDORF P.C.**  
Engineers / Land Surveyors  
Springfield, Illinois  
Design Firm License No. 184-002703

PROJECT NO. 07056-4  
DATE 4/17/08  
DRAWN BY TFG  
CHECKED BY GB/BD/MCB

PLOT DATE = 04/17/2008  
 FILE NAME = \\s07056-4\p\11br-1\11br-1.dwg  
 PLOT SCALE = 1/8" = 1'-0"  
 USER NAME = TFG