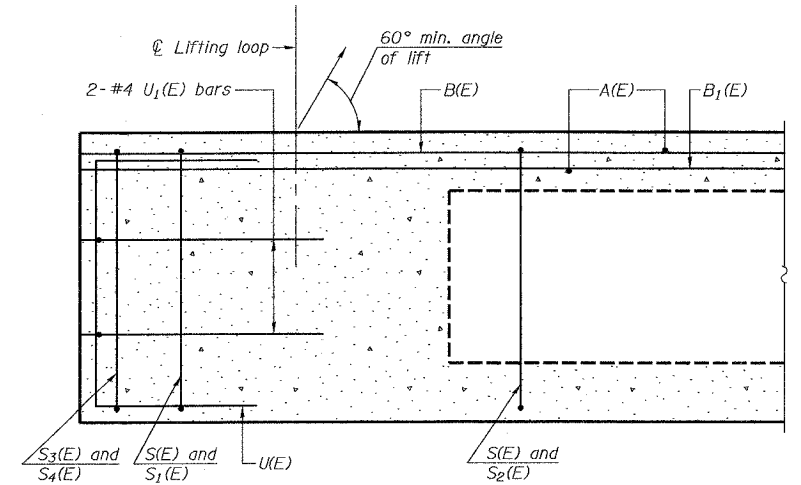
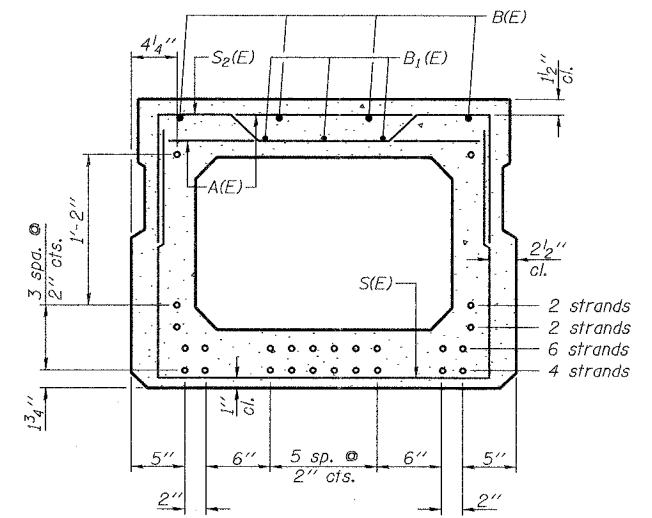


ROUTE NO.	SECTION	COUNTY	TOTAL SHEETS	SHEET NO.	SHEET NO. 6
FA 782	111BR-1	GALLATIN	73	55	14 SHEETS
FED. ROAD DIST. NO. 7	ILLINOIS	FED. AID PROJECT-			

Contract #78034

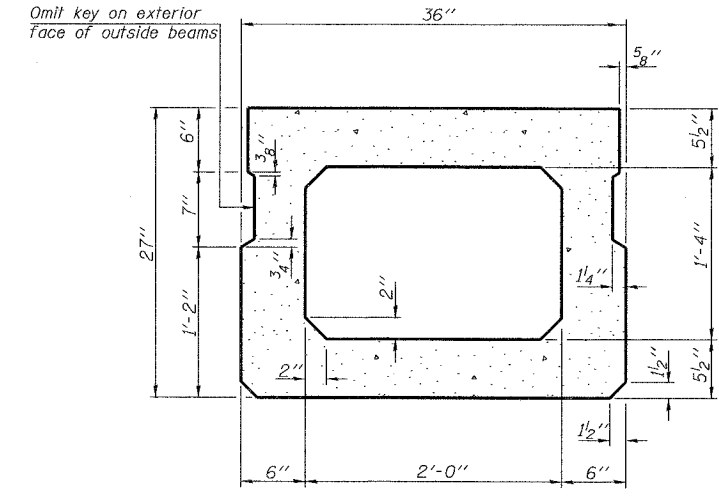


SECTION C-C



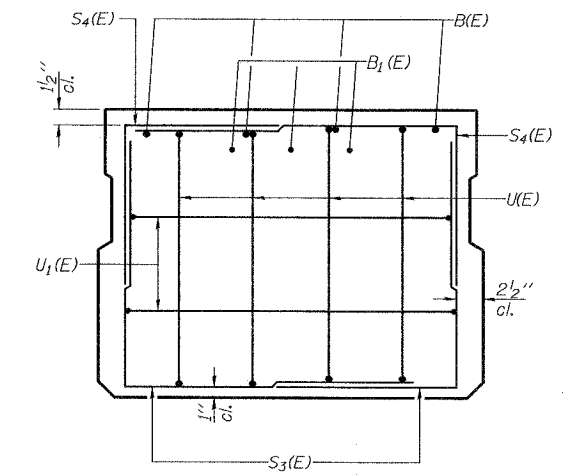
SECTION A-A

(Showing reinforcement and permissible strand locations)
Place the number of strands specified in each row symmetrically about the centerline of beam in the permissible strand locations shown.

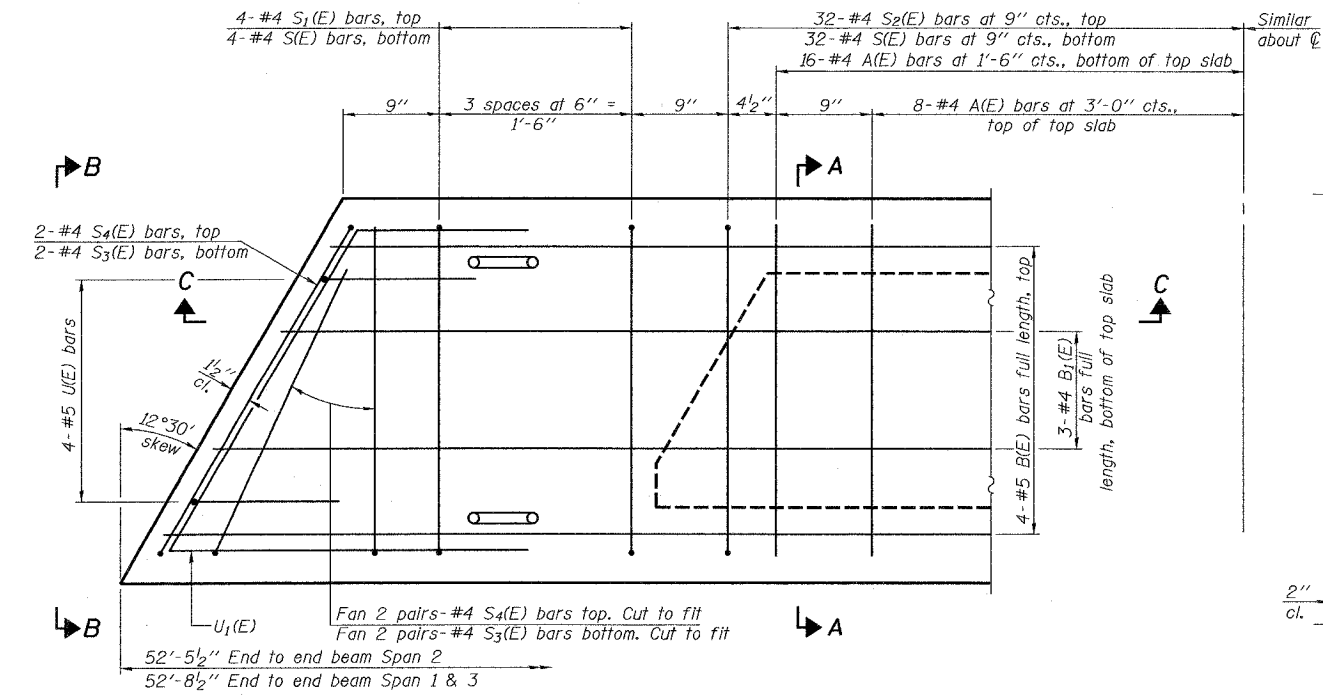


SECTION A-A

(Showing dimensions)

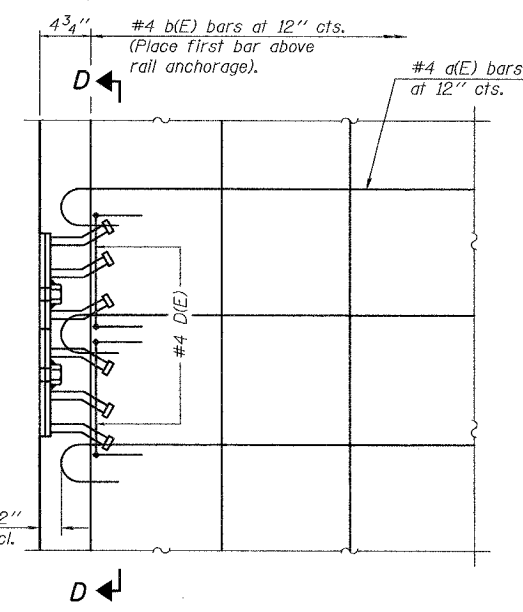


VIEW B-B



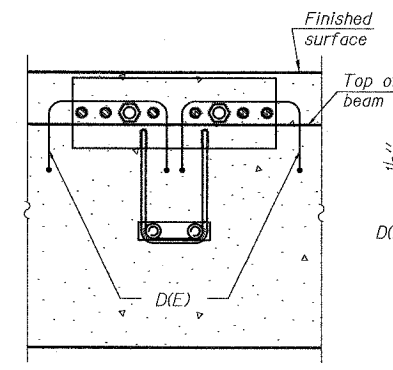
PLAN VIEW

Spacing of S(E) and S2(E) bars may be adjusted up to 4" in the immediate area of the transverse tie diaphragms to miss the block outs for the transverse ties.



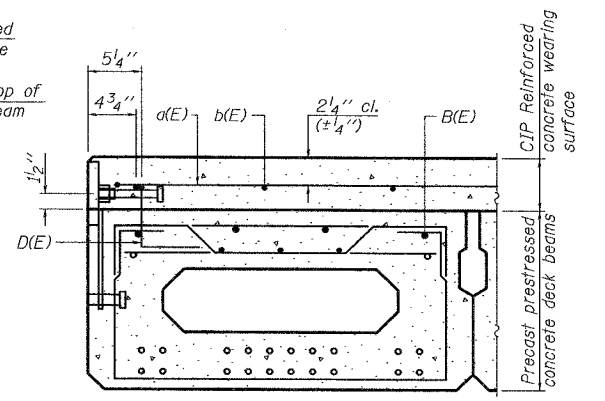
PLAN

Notes:
Formwork necessary for the wearing surface may be secured utilizing the bottom rail anchorage inserts and/or additional inserts cast into the beam.



SECTION D-D

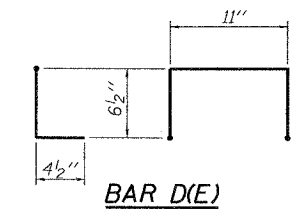
RAILING ANCHOR DEVICE DETAIL



CROSS SECTION

Showing Rail Anchor Detail

Note: See Sheet 7 of 14 for additional details and Bill of Material.
See Sheet 2 of 14 for rail post spacing and Sheet 8 of 14 for rail details.
See Sheet 4 of 14 for cross section.



BAR D(E)

BEAM DETAILS
F.A. RT. 782 SECTION 111BR-1
GALLATIN COUNTY
STATION 355+95.00
STRUCTURE NO. 030-0018

PROJECT NO.	07056-4
DATE	4/30/08
DRAWN BY	TFG
CHECKED BY	GB/BD/MB
COOMBE-BLOXDORF P.C.	Engineers / Land Surveyors Springfield, Illinois Design Firm License No. 184-002703

PLOT DATE = 04/30/2008
FILE NAME = \\07056-48\vr\p1\cbe\11-08.dgn
PLOT SCALE = 0:10000, 1" = 10'
USER NAME = TFG

PD-2736-L 8-29-07