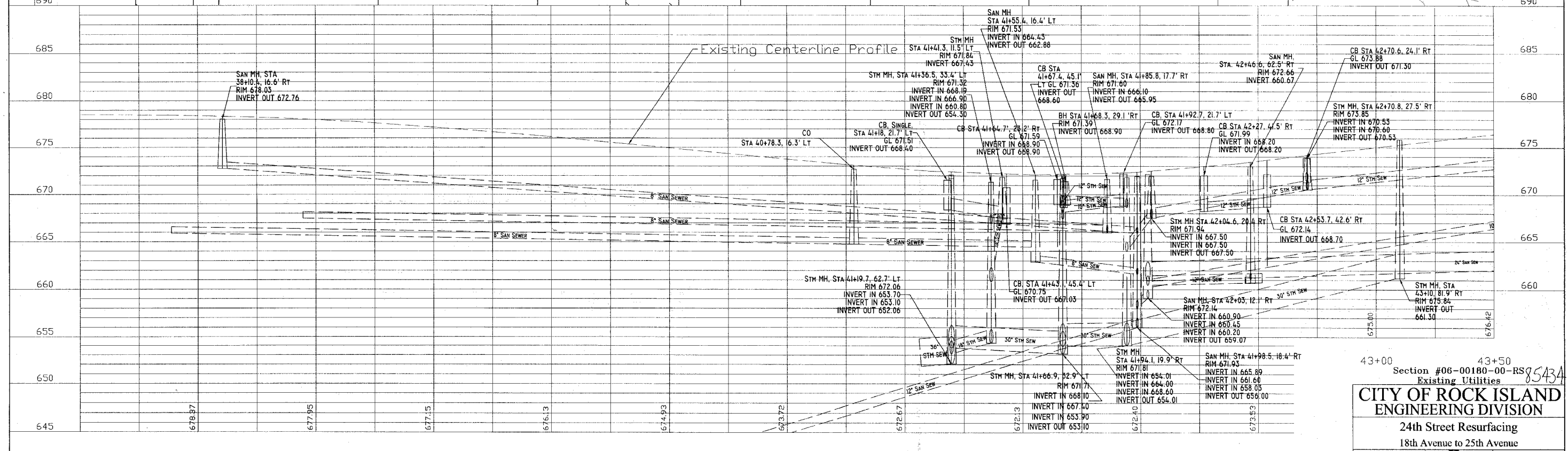
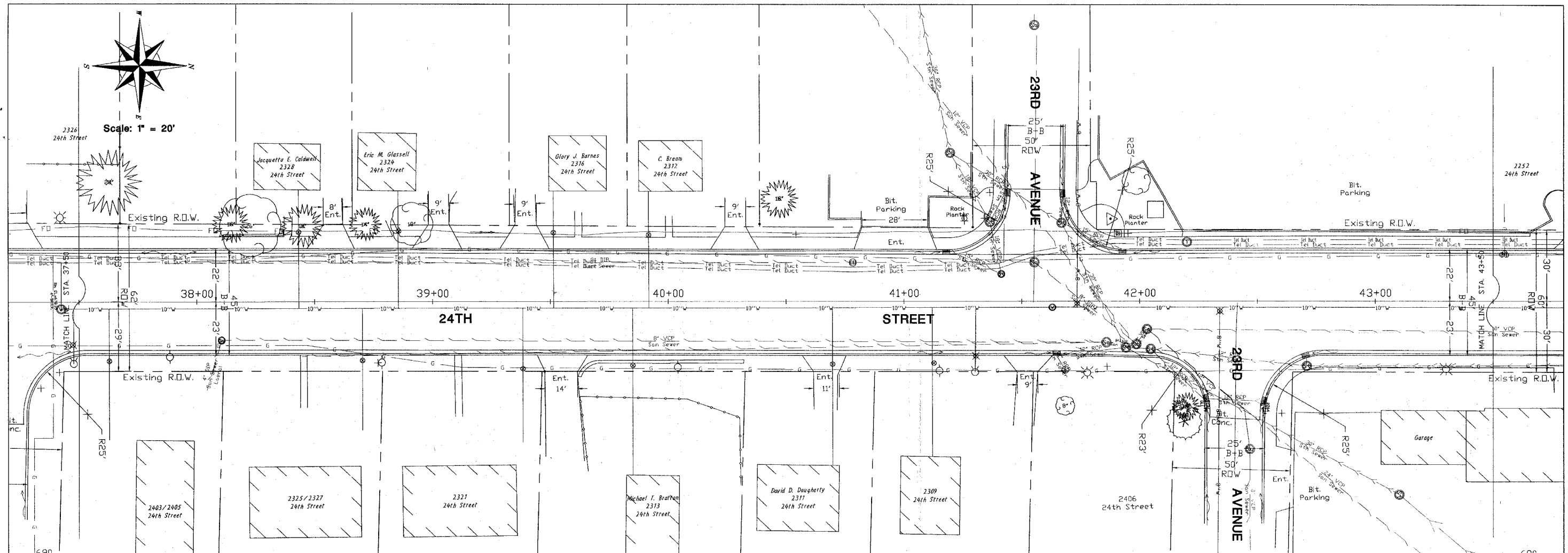


Scale: 1" = 20'



43+00 Section #06-00180-00-RS8543A 43+50  
 Existing Utilities  
**CITY OF ROCK ISLAND**  
**ENGINEERING DIVISION**  
 24th Street Resurfacing  
 18th Avenue to 25th Avenue  
 Job Number 2569 Date 1-31-2007  
 Computer Drawing Name 2569.dwg By mdw Sheet 17  
 ROCK ISLAND ILLINOIS Of 38