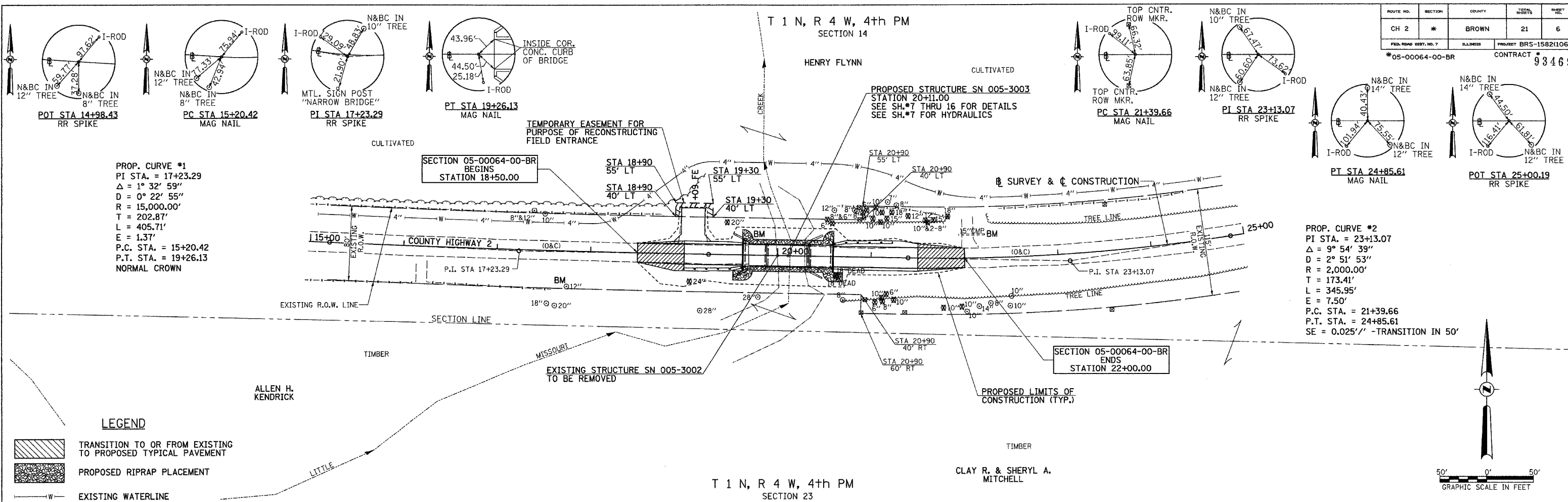


| ROUTE NO.             | SECTION | COUNTY     | SHEET                 | TOTAL SHEETS |
|-----------------------|---------|------------|-----------------------|--------------|
| CH 2                  | *       | BROWN      | 21                    | 6            |
| FED. ROAD DIST. NO. 7 |         | ILLINOIS   | PROJECT BRS-1582(106) |              |
| *05-00064-00-BR       |         | CONTRACT # |                       | 93469        |



PROP. CURVE #1  
 PI STA. = 17+23.29  
 $\Delta = 1^\circ 32' 59''$   
 $D = 0^\circ 22' 55''$   
 $R = 15,000.00'$   
 $T = 202.87'$   
 $L = 405.71'$   
 $E = 1.37'$   
 P.C. STA. = 15+20.42  
 P.T. STA. = 19+26.13  
 NORMAL CROWN

PROP. CURVE #2  
 PI STA. = 23+13.07  
 $\Delta = 9^\circ 54' 39''$   
 $D = 2^\circ 51' 53''$   
 $R = 2,000.00'$   
 $T = 173.41'$   
 $L = 345.95'$   
 $E = 7.50'$   
 P.C. STA. = 21+39.66  
 P.T. STA. = 24+85.61  
 SE = 0.025'/1' -TRANSITION IN 50'

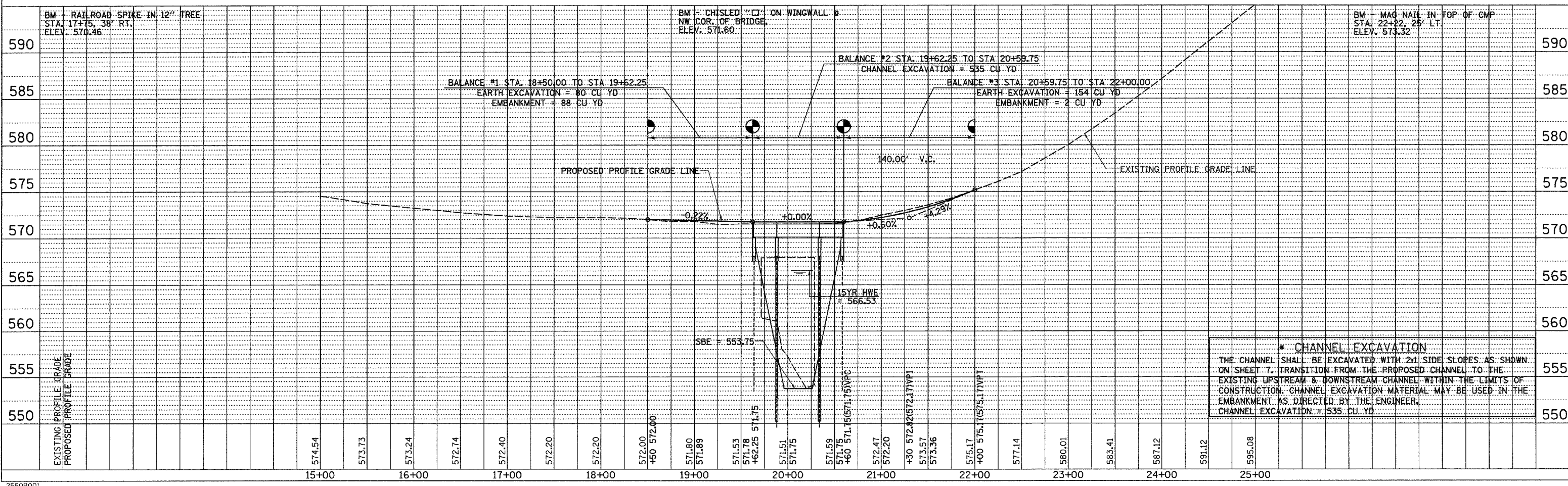
**LEGEND**

- TRANSITION TO OR FROM EXISTING TO PROPOSED TYPICAL PAVEMENT
- PROPOSED RIPRAP PLACEMENT
- EXISTING WATERLINE

|         |  |
|---------|--|
| DATE    |  |
| BY      |  |
| PLAN    |  |
| DATE    |  |
| BY      |  |
| PROFILE |  |
| DATE    |  |
| BY      |  |

|         |  |
|---------|--|
| DATE    |  |
| BY      |  |
| PROFILE |  |
| DATE    |  |
| BY      |  |

PLOT DATE = 5/13/2008  
 FILE NAME = V:\highway\2550-Brown\2550p100.dgn  
 PLOT SCALE = 500000.00 / 1 IN.  
 USER NAME = jhudson



\* CHANNEL EXCAVATION  
 THE CHANNEL SHALL BE EXCAVATED WITH 2:1 SIDE SLOPES AS SHOWN ON SHEET 7. TRANSITION FROM THE PROPOSED CHANNEL TO THE EXISTING UPSTREAM & DOWNSTREAM CHANNEL WITHIN THE LIMITS OF CONSTRUCTION. CHANNEL EXCAVATION MATERIAL MAY BE USED IN THE EMBANKMENT AS DIRECTED BY THE ENGINEER.  
 CHANNEL EXCAVATION = 535 CU YD