

BENCHMARK:

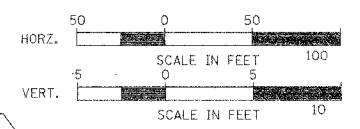
TOP OF CURB ON BRIDGE (SOUTHEAST CORNER OF NORTH CURB)
STA. 16+10.45, 10.3' LT.
ELEV. 639.79
NOTE: RELOCATE B.M. PRIOR TO REMOVAL OF EXISTING STRUCTURE

EXISTING STRUCTURE NO. 058-3153

SINGLE SPAN CONCRETE DECK ON WF BEAM SUPERSTRUCTURE
ON TIMBER ABUTMENTS WITH TIMBER WINGWALLS.
33'-0" BK.-BK. ABUTMENTS
25'-0" O.-O. DECK

STA. 15+93.29, SPECIAL BRIDGE DESIGN
PRECAST PRESTRESSED CONCRETE DECK
BEAM BRIDGE, SINGLE SPAN @ 62'-3 3/8"
30'-0" O.-O. DECK, SKEWED 30° LT. F.WD.

27.5' RT., STA. 21+39.5 TO
26.5' LT., STA. 21+42.5
54 FOOT
P CUL 1 RCCP 72
& PRCF FLAR END SEC 72
U.S. E = 629.39
D.S. E = 629.14



RTE.	SECTION	COUNTY	TOTAL SHEETS	SHEET NO.
CS #900	05-00205-00-BR	MACON	23	4
STA. 10+00.00 TO STA. 24+00.00				
FED. ROAD DIST. NO. ILLINOIS PROJECT: BRM-5169(4D)		CONTRACT NO. 95542		

DATE	BY	SURVEYED	NOTED	PLANNED

DATE	BY	PROFILES	NOTED	PLANNED

ROY MOSSER, JR.

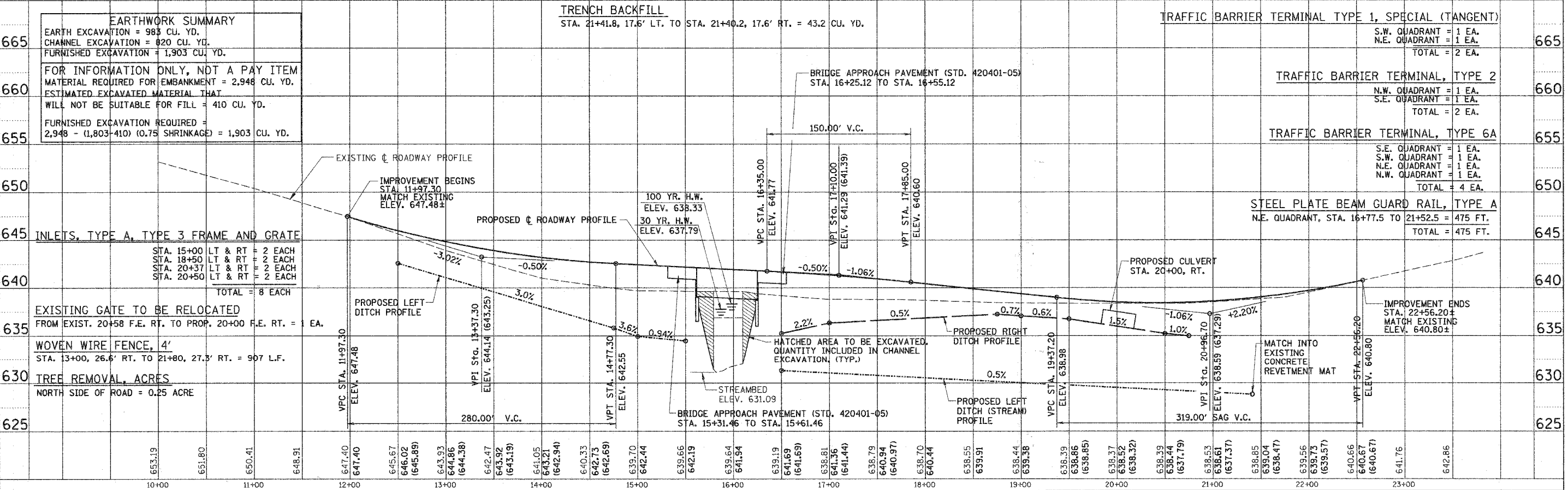
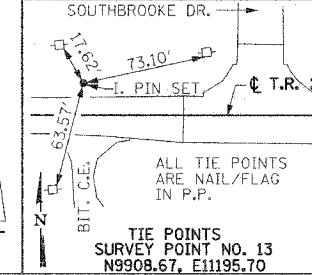
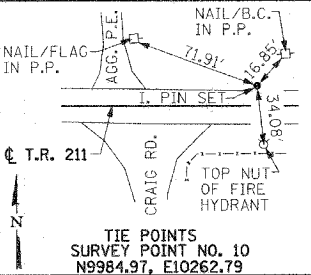
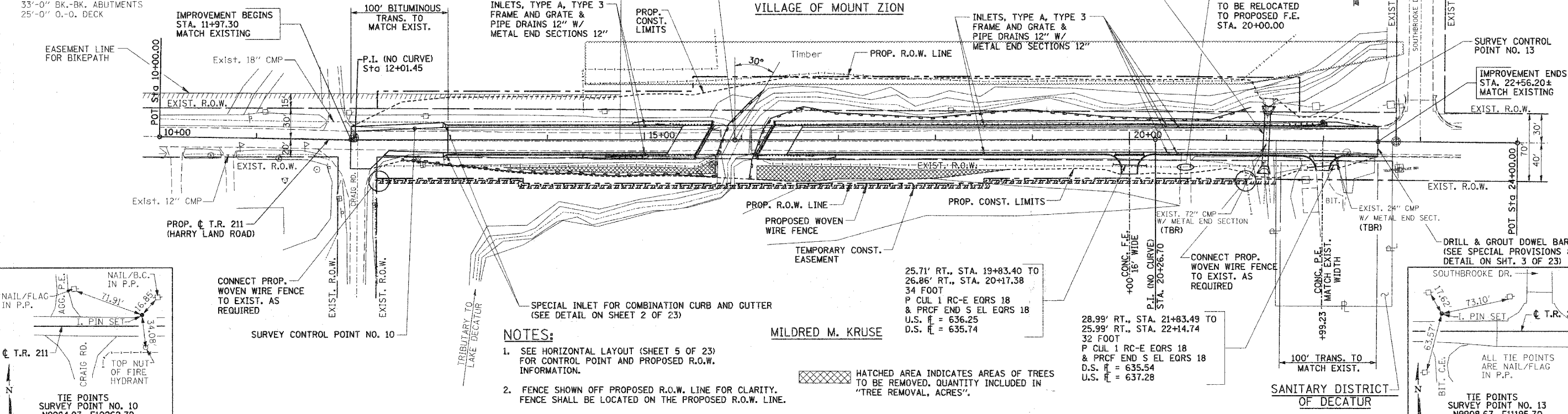
VILLAGE OF MOUNT ZION

MILDRED M. KRUSE

NOTES:

- SEE HORIZONTAL LAYOUT (SHEET 5 OF 23) FOR CONTROL POINT AND PROPOSED R.O.W. INFORMATION.
- FENCE SHOWN OFF PROPOSED R.O.W. LINE FOR CLARITY. FENCE SHALL BE LOCATED ON THE PROPOSED R.O.W. LINE.

HATCHED AREA INDICATES AREAS OF TREES TO BE REMOVED. QUANTITY INCLUDED IN "TREE REMOVAL, ACRES".



EARTHWORK SUMMARY

EARTH EXCAVATION = 983 CU. YD.
CHANNEL EXCAVATION = 820 CU. YD.
FURNISHED EXCAVATION = 1,903 CU. YD.

FOR INFORMATION ONLY, NOT A PAY ITEM
MATERIAL REQUIRED FOR EMBANKMENT = 2,948 CU. YD.
ESTIMATED EXCAVATED MATERIAL THAT
WILL NOT BE SUITABLE FOR FILL = 410 CU. YD.

FURNISHED EXCAVATION REQUIRED =
2,948 - (1,803 - 410) (0.75 SHRINKAGE) = 1,903 CU. YD.

TRENCH BACKFILL
STA. 21+41.8, 17.6' LT. TO STA. 21+40.2, 17.6' RT. = 43.2 CU. YD.

TRAFFIC BARRIER TERMINAL TYPE 1, SPECIAL (TANGENT)
S.W. QUADRANT = 1 EA.
N.E. QUADRANT = 1 EA.
TOTAL = 2 EA.

TRAFFIC BARRIER TERMINAL, TYPE 2
N.W. QUADRANT = 1 EA.
S.E. QUADRANT = 1 EA.
TOTAL = 2 EA.

TRAFFIC BARRIER TERMINAL, TYPE 6A
S.E. QUADRANT = 1 EA.
S.W. QUADRANT = 1 EA.
N.E. QUADRANT = 1 EA.
N.W. QUADRANT = 1 EA.
TOTAL = 4 EA.

STEEL PLATE BEAM GUARD RAIL, TYPE A
N.E. QUADRANT, STA. 16+77.5 TO 21+52.5 = 475 FT.
TOTAL = 475 FT.