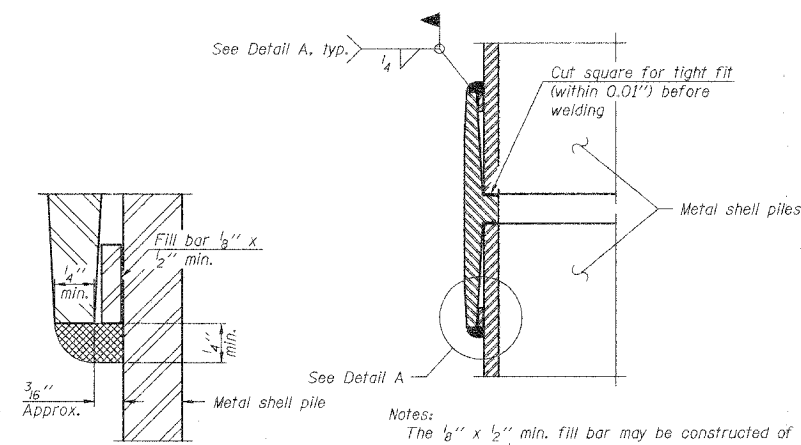


**METAL SHELL PILE TABLE**

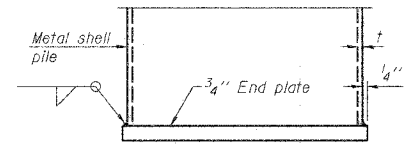
Designation	Wall thickness t	Weight per foot (Lbs./ft.)	Inside volume (yd. <sup>3</sup> /ft.)
PP12	0.250"	31.37	0.0267
PP14	0.250"	36.71	0.0368



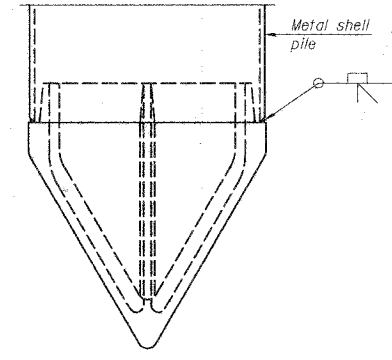
**DETAIL A**

Notes:  
 The 1/2" x 1/2" min. fill bar may be constructed of 2 bars with a 1/8" max. gap between them.  
 Pile segments shall be driven to solid contact with splicer before welding.

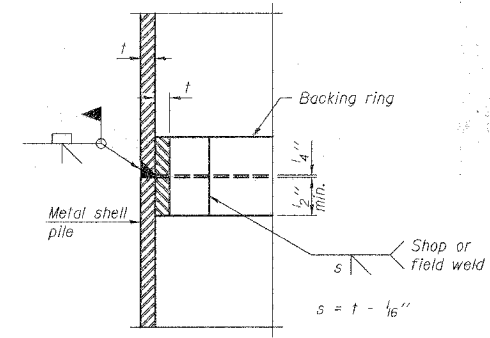
**WELDED COMMERCIAL SPLICE**



**END PLATE ATTACHMENT**

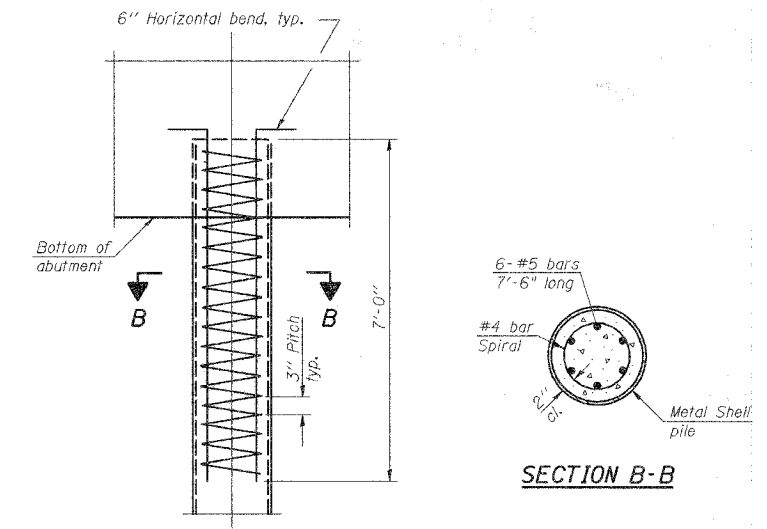


**METAL SHELL PILE SHOE ATTACHMENT**



**COMPLETE PENETRATION WELD SPLICE**

Backing ring made from pile shell. Remove segment to allow reducing circumference and vertically rejoin with partial joint penetration weld.



**ELEVATION**

**SECTION B-B**

**METAL SHELL REINFORCEMENT AT ABUTMENTS**

Note:  
 The metal shell piles shall be according to ASTM A 252 Grade 3.

PILE DETAILS			
Date	Designed MJP	CS #900 (HARRY LAND ROAD) OVER TRIB. TO LAKE DECATUR SECTION 05-00205-00-BR MACON COUNTY STA. 15+93.29 PROP. STR. NO. 058-3386	Sheet No.
Revisions	Drawn BKN		7
	Checked KWB		
	Approved KWB		
Prepared by:	URS 345 East Ash Avenue Decatur, IL 62526		