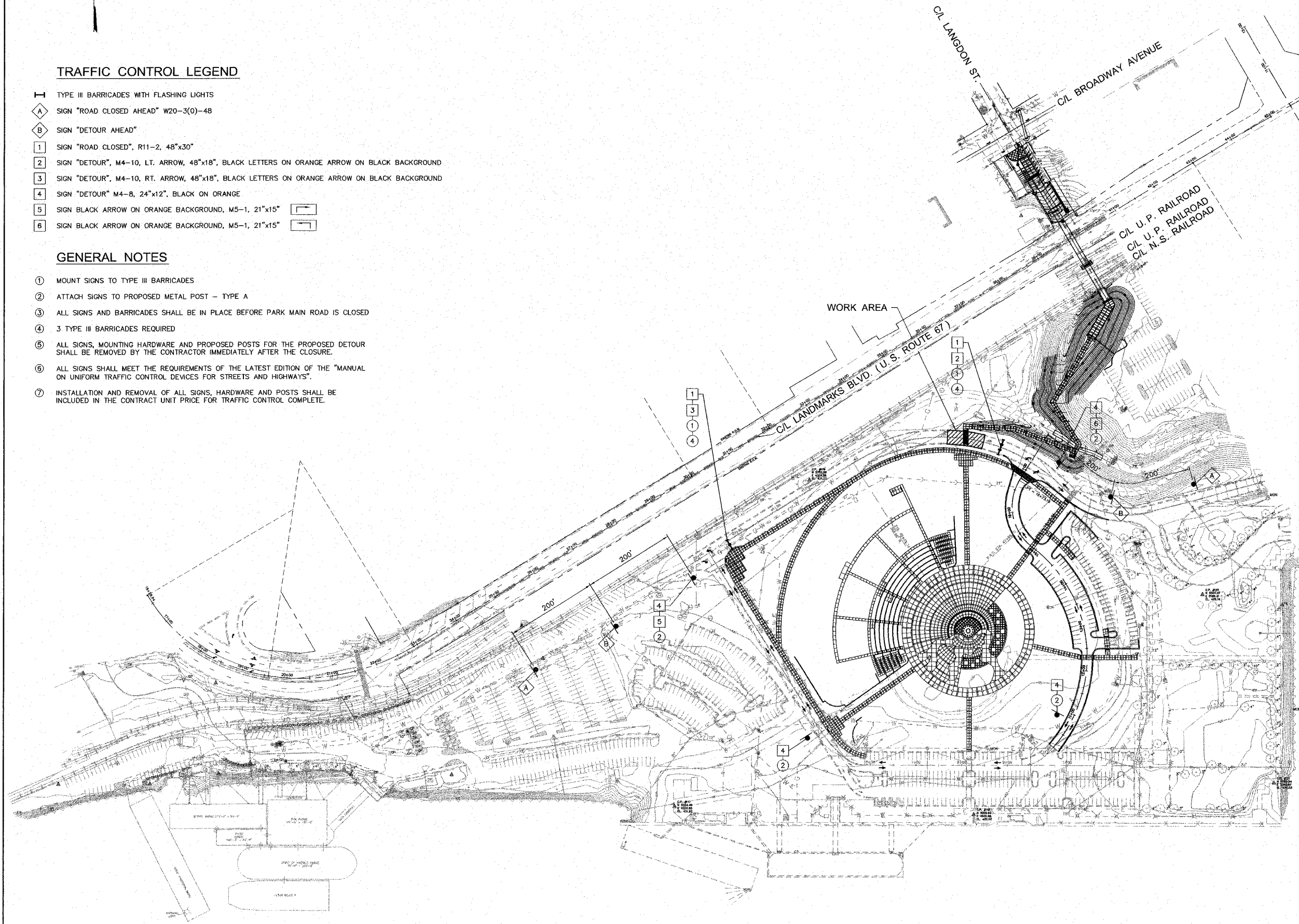


TRAFFIC CONTROL LEGEND

- I TYPE III BARRICADES WITH FLASHING LIGHTS
- A SIGN "ROAD CLOSED AHEAD" W20-3(0)-48
- B SIGN "DETOUR AHEAD"
- 1 SIGN "ROAD CLOSED", R11-2, 48"x30"
- 2 SIGN "DETOUR", M4-10, LT. ARROW, 48"x18", BLACK LETTERS ON ORANGE ARROW ON BLACK BACKGROUND
- 3 SIGN "DETOUR", M4-10, RT. ARROW, 48"x18", BLACK LETTERS ON ORANGE ARROW ON BLACK BACKGROUND
- 4 SIGN "DETOUR" M4-8, 24"x12", BLACK ON ORANGE
- 5 SIGN BLACK ARROW ON ORANGE BACKGROUND, M5-1, 21"x15"
- 6 SIGN BLACK ARROW ON ORANGE BACKGROUND, M5-1, 21"x15"

GENERAL NOTES

- 1 MOUNT SIGNS TO TYPE III BARRICADES
- 2 ATTACH SIGNS TO PROPOSED METAL POST - TYPE A
- 3 ALL SIGNS AND BARRICADES SHALL BE IN PLACE BEFORE PARK MAIN ROAD IS CLOSED
- 4 3 TYPE III BARRICADES REQUIRED
- 5 ALL SIGNS, MOUNTING HARDWARE AND PROPOSED POSTS FOR THE PROPOSED DETOUR SHALL BE REMOVED BY THE CONTRACTOR IMMEDIATELY AFTER THE CLOSURE.
- 6 ALL SIGNS SHALL MEET THE REQUIREMENTS OF THE LATEST EDITION OF THE "MANUAL ON UNIFORM TRAFFIC CONTROL DEVICES FOR STREETS AND HIGHWAYS".
- 7 INSTALLATION AND REMOVAL OF ALL SIGNS, HARDWARE AND POSTS SHALL BE INCLUDED IN THE CONTRACT UNIT PRICE FOR TRAFFIC CONTROL COMPLETE.



REVISIONS

SMS ENGINEERS
Sheppard, Morgan & Schwaab, Inc.
CONSULTING ENGINEERS AND LAND SURVEYORS
215 Market Street, P.O. Box E, Alton, IL 62002 618/462-3735 E-mail: mail@smsengineers.com
10 Central Industrial Drive, Granite City, IL 62040 618/777-9700 E-mail: mail@smsengineers.com
DESIGN FIRM # 184-000992

ALTON, ILLINOIS
PEDESTRIAN OVERPASS AT LANGDON ST.
TRAFFIC CONTROL PLAN
PARK : MAIN ROADWAY

DWG. NO. C-7
TRAFFIC CONTROL PARK.DWG
REF. BK. 5030 PG. 1
JOB NO. 406924.1
DSN. BY: CLS
DWN. BY: CHD
CHK. BY: CLS
DATE: MARCH 31, 2008
SCALE: 1" = 100'
SHEET 8 OF 54