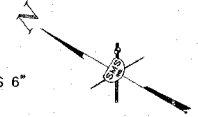
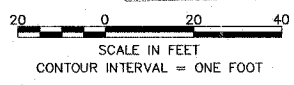
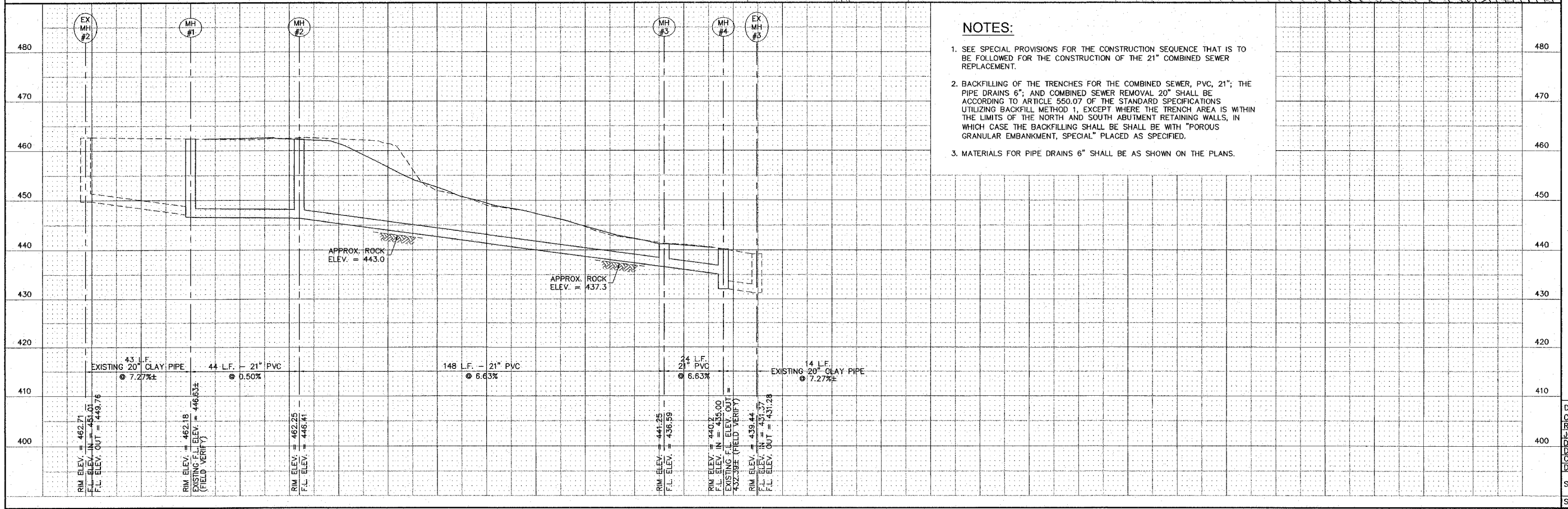


- ① APPROXIMATE LOCATION OF SEWER LATERALS AS DETERMINED BY T.V. INSPECTION. THE SEWER LATERALS MAY OR MAY NOT BE ACTIVE. THE CONTRACTOR SHALL BE PREPARED TO RECONNECT THESE SEWER LATERALS TO THE REPLACEMENT 21" COMBINED SEWER WITH AN APPROPRIATE SIZE "TEE" CONNECTION UNLESS, PRIOR TO THE CONSTRUCTION OF THE 21" COMBINED SEWER, THE CITY OF ALTON HAS DETERMINED THAT ONE OR MORE OF THESE SEWER LATERALS ARE INACTIVE. RECONNECTION OF THE SEWER LATERALS SHALL BE INCIDENTAL TO THE 21" COMBINED SEWER CONSTRUCTION.
  - ② NORTH APPROACH - 6" WALKWAY DRAIN CONNECTION (SEE DWG. C-12)
  - ③ 6" DOWNSPOUT DRAIN CONNECTION (SEE DWG. C-12)
  - ④ SOUTH APPROACH - 6" WALKWAY DRAIN (SEE DWG. C-12)
  - ⑤ INSTALL TEMPORARY PLUGS IN EXISTING MANHOLE #1, EXISTING INLET #1 AND PROPOSED MANHOLE #4.
- MANHOLES, TYPE A, 4'-DIAMETER, TYPE 1 FRAME, CLOSED LID



**NOTES:**

1. SEE SPECIAL PROVISIONS FOR THE CONSTRUCTION SEQUENCE THAT IS TO BE FOLLOWED FOR THE CONSTRUCTION OF THE 21" COMBINED SEWER REPLACEMENT.
2. BACKFILLING OF THE TRENCHES FOR THE COMBINED SEWER, PVC, 21"; THE PIPE DRAINS 6"; AND COMBINED SEWER REMOVAL 20" SHALL BE ACCORDING TO ARTICLE 550.07 OF THE STANDARD SPECIFICATIONS UTILIZING BACKFILL METHOD 1, EXCEPT WHERE THE TRENCH AREA IS WITHIN THE LIMITS OF THE NORTH AND SOUTH ABUTMENT RETAINING WALLS, IN WHICH CASE THE BACKFILLING SHALL BE WITH "POROUS GRANULAR EMBANKMENT, SPECIAL" PLACED AS SPECIFIED.
3. MATERIALS FOR PIPE DRAINS 6" SHALL BE AS SHOWN ON THE PLANS.



**SMS ENGINEERS**  
Sheppard, Morgan & Schwaab, Inc.  
CONSULTING ENGINEERS AND LAND SURVEYORS  
215 Market Street, P.O. Box E, Alton, IL 62002 618462-2952 E-mail: mail@smsengineers.com  
9 Central Industrial Drive, Granite City, IL 62040 618677-9700 E-mail: mail@smsengineers.com  
DESIGN FIRM # 184-000992

ALTON, ILLINOIS  
PEDESTRIAN OVERPASS AT LANGDON ST.  
COMBINED SEWER REPLACEMENT  
PLAN / PROFILE

DWG. NO. C-10	COMBINED SEWER.DWG
REF. BK. 5030 PG. 1	JOB NO. 406924.1
DSN. BY: CLS	
DWN. BY: CLS	
CHK. BY: CLS	
DATE: MARCH 31, 2008	
SCALE: 1" = 20' HORZ.	1" = 10' VERT.
SHEET 11 OF 54	