



EXPIRES 9-31-08

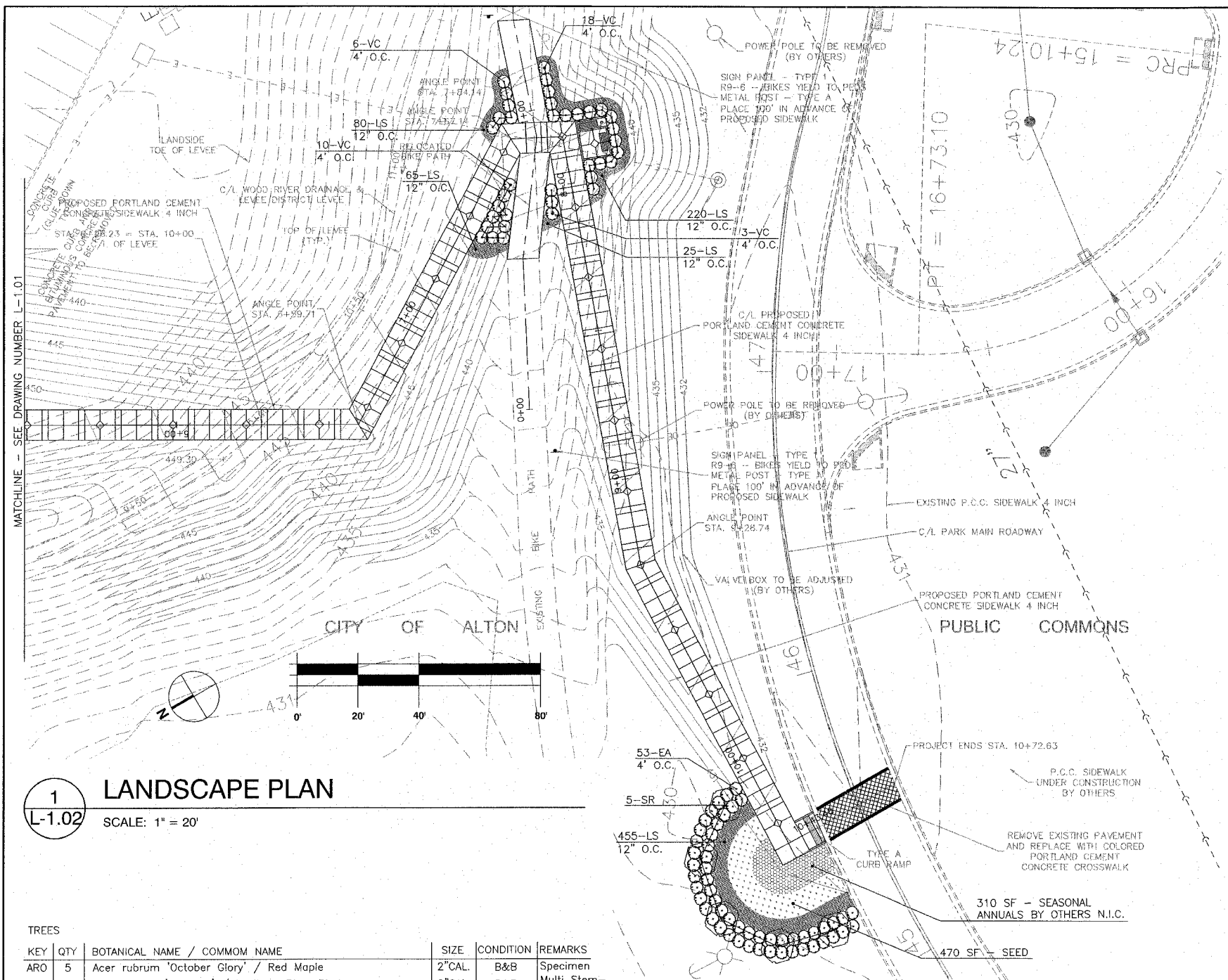
REVISIONS

PLANNING DESIGN STUDIO
727 North First Street, Suite 360
Saint Louis, Missouri 63102
Phone (314) 241-3600 Fax (314) 241-3601

PDS

ALTON, ILLINOIS
PEDESTRIAN OVERPASS AT LANGDON ST.
LANDSCAPE PLAN AND DETAILS

DWG. NO. L-1.02
LANDSCAPE.DWG
REF. BK. PG.
JOB NO. JO615
DSN. BY: LAF
DWN. BY: JRH
CHK. BY: DKB
DATE: MAR. 14, 2008
SCALE: AS SHOWN
SHEET 17 OF 54



1
L-1.02
LANDSCAPE PLAN
SCALE: 1" = 20'

TREES

KEY	QTY	BOTANICAL NAME / COMMON NAME	SIZE	CONDITION	REMARKS
ARO	5	Acer rubrum 'October Glory' / Red Maple	2" CAL.	B&B	Specimen
BN	12	Betula nigra 'Heritage' / Heritage River Birch	2" CAL.	B&B	Multi Stem - See Note 3
CB	6	Carpinus betulus 'Fastigiata' / Columnar European Hornbeam	3.5" CAL.	B&B	
SR	5	Syringa reticulata 'Ivory Silk' / Ivory Silk Japanese Tree Lilac	2" CAL.	B&B	

SHRUBS

KEY	QTY	BOTANICAL NAME / COMMON NAME	SIZE	CONDITION
EA	53	Euonymus alatus 'Timber Creek' / Chi. Fire Burning Bush	36"	B&B
VC	37	Viburnum carlesii / Koreanspice Viburnum	36"	B&B

GROUNDCOVERS / PERENNIALS

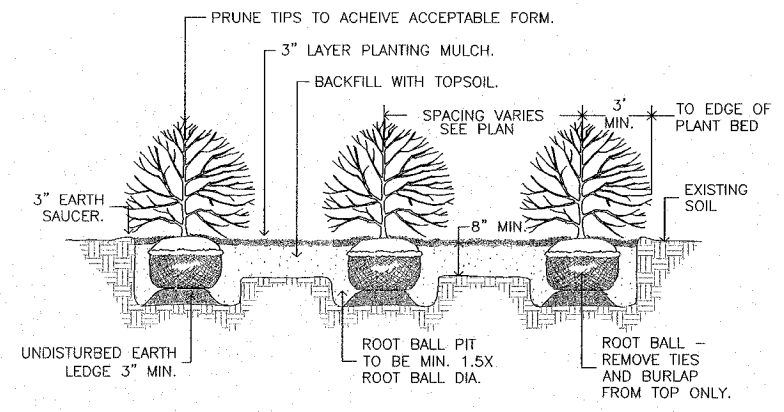
KEY	QTY	BOTANICAL NAME / COMMON NAME	SIZE	CONDITION
LS	8.45	Liriope spicata / Creeping Lilyturf	11 Quart	CONT.

NOTE: PERENNIAL QUANTITIES GIVEN IN UNITS. 1 UNIT=100 PLANTS.

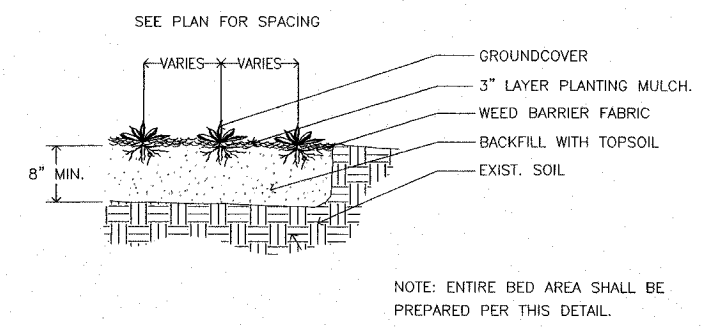
2
L-1.02
Plant Schedule
NTS

- LANDSCAPE PLAN NOTES**
- ENTIRE AREA WITHIN CONSTRUCTION LIMITS IS TO BE SEEDED EXCEPT AREAS TO BE MULCHED AS PART OF LANDSCAPE PLANTINGS.
 - REFER TO DRAWING NUMBER L-1.01 AND L-1.02 FOR LANDSCAPE PLANTING DETAILS AND PLANT SCHEDULE.
 - ALL MULTI-STEM TREES SPECIFIED SHALL BE 3 TRUNK MINIMUM, WITH A 2" MINIMUM CALIPER FOR EACH TRUNK.
 - ALL PLANTS SHALL CONFORM TO UPPER RANGE LIMITS FOR CALIPER AND HEIGHT DIMENSIONS LISTED IN ANSI 260.1-2004 FOR SIZE GRADE SPECIFIED.
 - UNDERGROUND FACILITY STRUCTURES AND UTILITIES HAVE BEEN PLOTTED FROM AVAILABLE SURVEYS AND RECORD INFORMATION AND, THEREFORE THEIR LOCATIONS MUST BE CONSIDERED APPROXIMATE ONLY. VERIFICATION OF LOCATION OF ALL UNDERGROUND STRUCTURES AND FACILITIES EITHER SHOWN OR NOT SHOWN ON THESE PLANS SHALL BE THE RESPONSIBILITY OF THE CONTRACTOR.
 - DO NOT DISTURB EXISTING UTILITIES. PROTECT FROM DAMAGE DURING CONSTRUCTION AND PLANTING.
 - CONTRACTOR IS TO NOTIFY ALL UTILITY COMPANIES AND OBTAIN FIELD LOCATIONS FOR ALL UTILITIES TO REMAIN ON SITE.
 - SEE PLAN AND PROFILE SHEETS FOR PROPOSED UTILITY INFORMATION.
 - PLANTS TO BE LOCATED AS SHOWN ON THE PLANS OR AS DIRECTED BY LANDSCAPE ARCHITECT. CONTRACTOR TO STAKE OUT THE LOCATION FOR ALL PLANTS AND OUTLINES FOR PLANTING BEDS ON THE GROUND AND OBTAIN APPROVAL BEFORE ANY EXCAVATION OR PLANTING IS MADE. MAKE ADJUSTMENTS IN LOCATIONS AND OUTLINES AS DIRECTED.

3
L-1.02
Shrub Planting
NTS

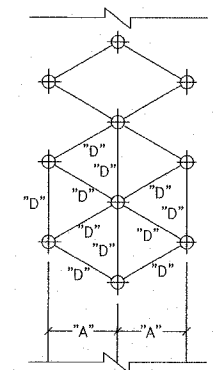


4
L-1.02
Groundcover & Perennial Planting
NTS



FOR USE WITH ALL PLANT TYPES SPACED EQUIDISTANTLY

SPACING "D"	ROW "A"	NO. OF PLANTS/SF	AREA UNIT
10" O.C.	8.66"	1.66	1 sq. ft.
12" O.C.	10.4"	1.15	
15" O.C.	13.0"	7.38	10 sq. ft.
18" O.C.	15.6"	5.12	
24" O.C.	20.8"	2.9	
30" O.C.	26.0"	1.85	
36" O.C.	30.0"	1.28	
4' O.C.	4.33'	4.61	100 sq. ft.
6' O.C.	5.2'	3.2	
8' O.C.	6.93'	1.8	
10' O.C.	8.66'	1.16	



5
L-1.02
Plant Spacing Chart
NTS