

LIGHT FIXTURE SCHEDULE

MARK	MANUFACTURER	CATALOG	LAMPS	FINISH	MOUNTING	REMARKS
SA	Antique Street Lamps	BLC1 BCL3L 100M MACS 277 ANBK TYPE V DISTRIBUTION	1 100W MH	Black	Ground	TYPE V DISTRIBUTION
SB*	ANP	200GLCL GUPTIC 32WPL-E22 (3") 277V (SEE DETAIL)	1 F32PL	Black	Post	See Detail
SC	Kim	AFL16 100MH 277 BLP HDS FHBLP W/2 WEB BLP	1 100W MH	Black	Wall	

* EQUIVALENT FIXTURES AS MANUFACTURED BY "BASELIGHT & SPERO" WILL BE ACCEPTABLE UPON APPROVAL OF SPECIFIC MODEL NUMBER BY ENGINEER.

LOAD	PANELBOARD MP (EXISTING) VOLTS: 277/480					MOUNTED EXTERIOR PHASE/WIRE: 3/4						LOCATION-PARKING LOT MANS: 400A MCB						AMPS-400	
	LOAD, KW	REC	O/M	A	P	CIR	P	A	O/M	REC	LOAD, KW	LOAD	LOAD, KW	LOAD	LOAD, KW	LOAD			
Parking Lot (Existing)				40	3	1	A	2	3	40		Parking Lot (Existing)							
						3	B	4											
						5	C	6											
Parking Lot (Existing)				40	3	7	A	8	3	60		XFMR							
						9	B	10											
						11	C	12											
Pedestrian Walk	20	1		13*		A	14	1	20										
Pedestrian Walk	20	1		15*		B	15	1	20										
Pedestrian Walk	20	1		17*		C	18	1	20										
Pedestrian Walk	20	1		19*		A	20	1	20										
Spare	20	1		21*		B	22	1	20										
SUB-TOTAL, CL, KW	0.00	0.00	0.00							0.00	0.00	0.00				SUB-TOTAL, CL, KW			

* ADD NEW 20 AMP SINGLE POLE BREAKER TO EXISTING SIEMENS PANEL.

KEYED NOTES (THIS SHEET ONLY):

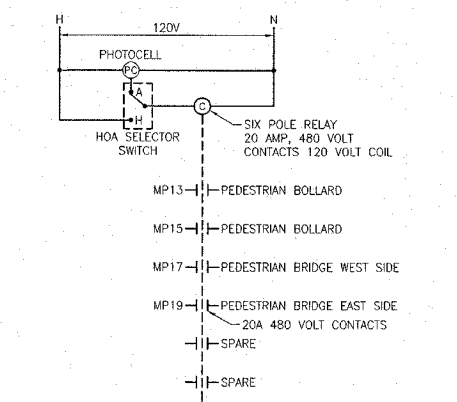
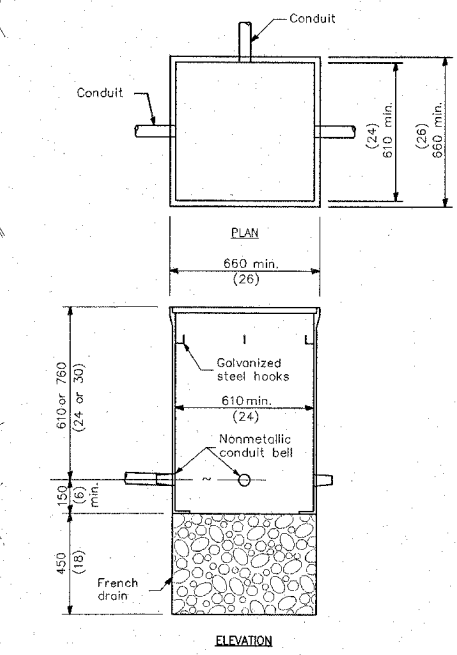
- 1 SEE "IN-SIDEWALK" BASE DETAIL LEAVE 4" CLEARANCE BETWEEN BASE EDGE AND CHEEK WALL.
- 2 BASE DEPTH SHALL BE 18" DEEP TO AVOID PENETRATING LEVEE SOIL.
- 3 ROUTE CONDUIT BELOW CONCRETE TO AVOID PENETRATING LEVEE SOIL.
- 4 EXISTING PANEL MP. ADD (5) 20 AMP, SINGLE POLE BREAKERS TO EXISTING 277/480 VOLT THREE PHASE PANEL.
- 5 EXISTING 120/208 VOLT PANEL. ADD (1) 20 AMP, SINGLE POLE BREAKER FOR RELAY AND PHOTOCELL POWER.
- 6 BASE MOUNTED RELAY CONTROLLER.
- 7 SEE "NEXT TO SIDEWALK BASE" DETAIL.
- 8 EXISTING EQUIPMENT.

ELECTRIC ENGINEERING SYMBOLS

- ⊙ WALL MOUNTED FIXTURE
- ⊙ BOLLARD
- CONDUIT CONCEALED IN FLOOR/BELOW SLAB/BELOW GRADE
- ||||| WIRE IN CONDUIT LEFT TO RIGHT 1 GROUND, 1 NEUTRAL, 3 HOTS
- ⊞ HAND HOLE
- ⊞ PANELBOARD - WALL MOUNTED
- ⊞ ELECTRIC METER
- ⊞ BASE MOUNTED CONTROLLER
- 1 KEYED NOTE

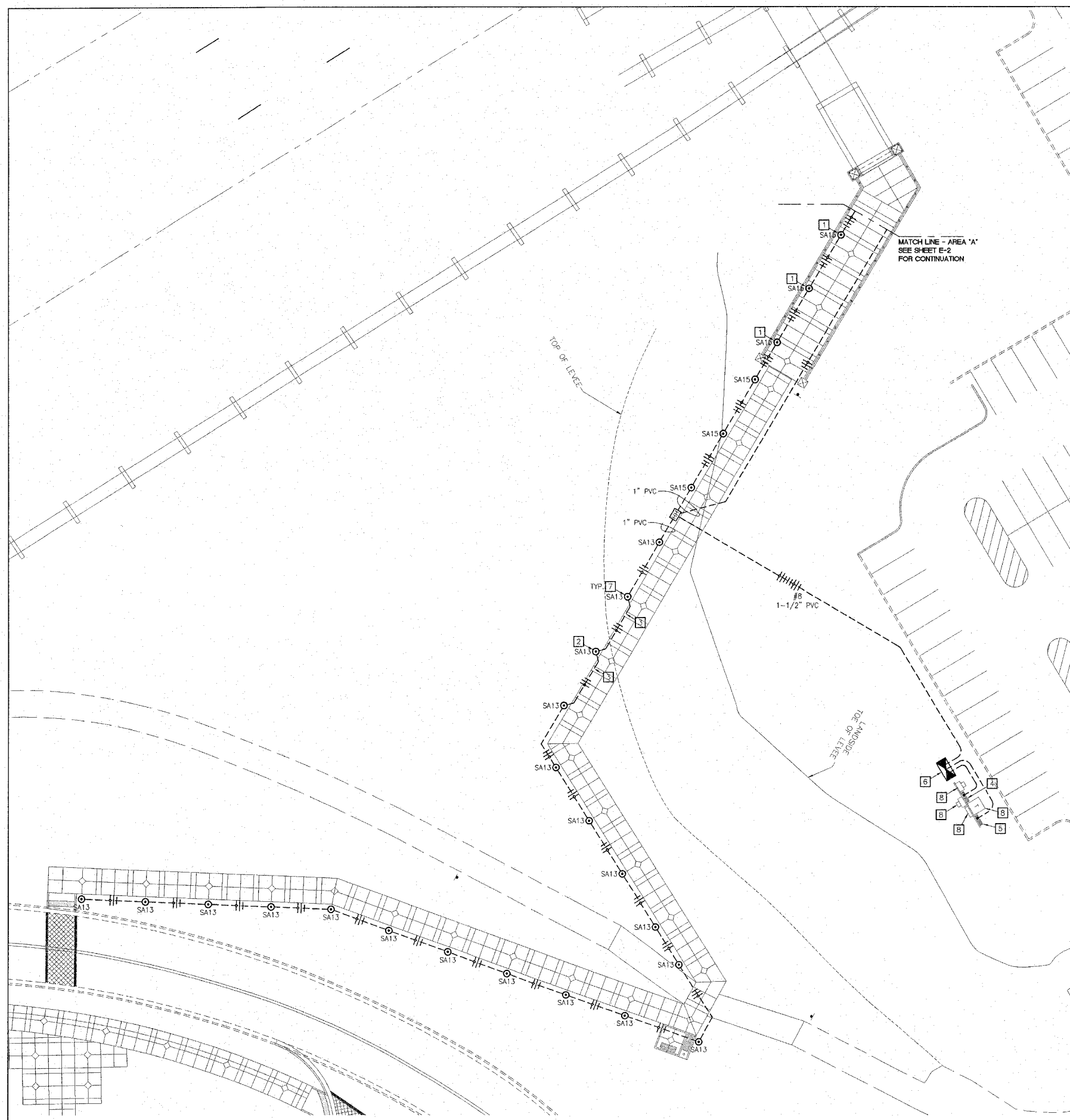
GENERAL NOTE:

- ALL CONDUCTORS SHALL BE #8 AWG.
- DO NOT PENETRATE EXISTING LEVEE SOIL FOR INSTALLATION FIXTURES & CONDUITS.



COMPOSITE CONCRETE HANDHOLE
NO SCALE

LIGHTING CONTROL SCHEMATIC
NO SCALE



PEDESTRIAN OVERPASS LIGHTING - AREA "A"
SCALE: 1" = 20'-0"

REVISIONS

HORNER & SHIRIN, INC.
ENGINEERS
5200 OAKLAND AVE. • ST. LOUIS, MO 63110-1490
314-531-4321 • FAX 314-531-6966
www.HornerShirin.com

ALTON, ILLINOIS
PEDESTRIAN OVERPASS AT LANGDON ST.

DWG. NO. E1
PEDESTRIAN P-P ALT #1 DWG
REF. BK. 5030 PG. 1
JOB NO. 4069241
DSN. BY: JAB
DWN. BY: JAD
CHK. BY: JAB
DATE: 03/28/08

SCALE: 1" = 20'
SHEET 18 OF 54