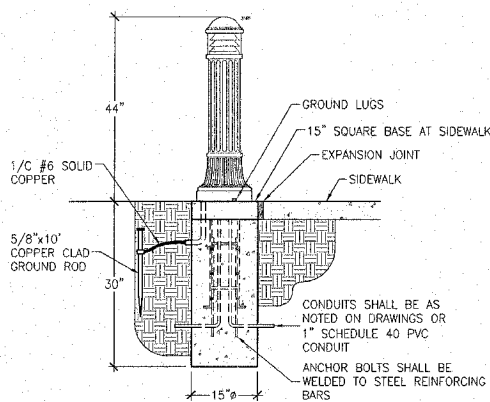
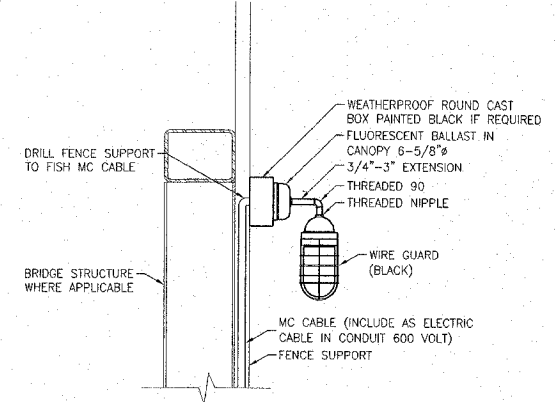


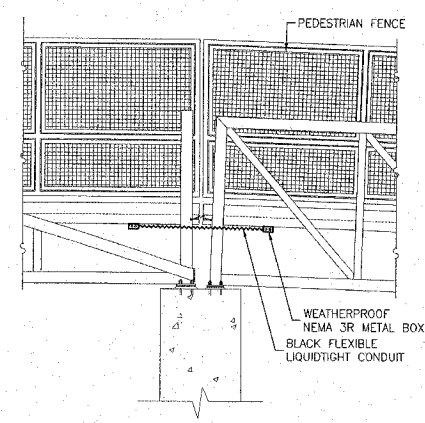
FIXTURE SA "IN SIDEWALK" MOUNTING DETAIL
NO SCALE



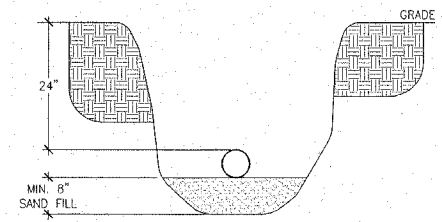
FIXTURE SA "NEXT TO SIDEWALK" MOUNTING DETAIL
NO SCALE



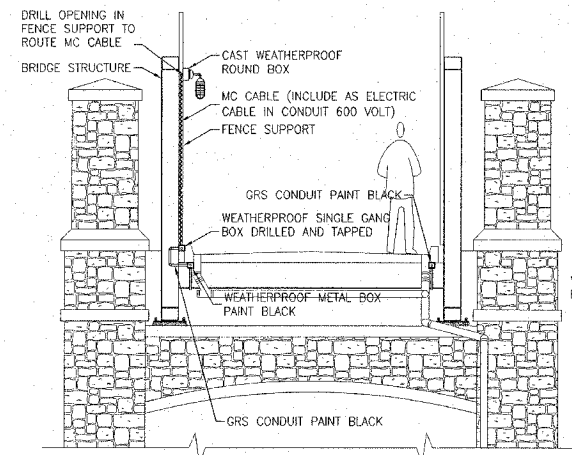
FIXTURE SB DETAIL
NO SCALE



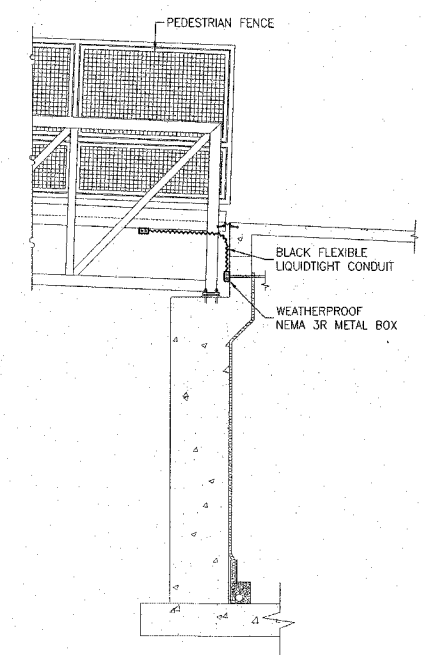
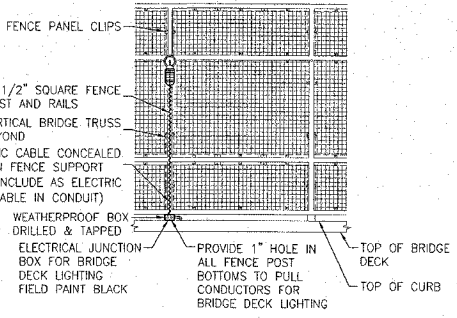
PIER CONDUIT DETAIL
NO SCALE



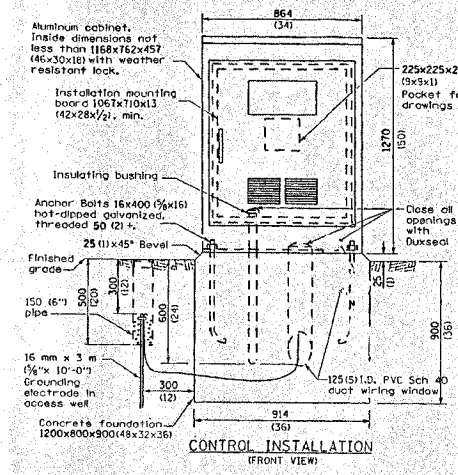
TYPICAL CONDUIT BURIAL DETAIL
NO SCALE
DO NOT PENETRATE LEVEE FOR INSTALLATION. ALL CONDUIT INSTALLED IN FILL. IF LESS THAN 24" BURIAL INSTALL 2" CONCRETE COVER.



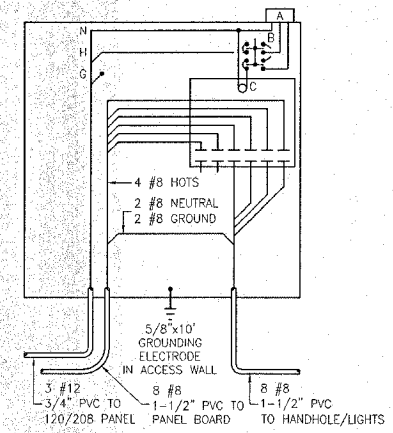
FIXTURE SB BRANCH CIRCUIT DETAIL
NO SCALE



ABUTMENT CONDUIT DETAIL
NO SCALE



CONTROL INSTALLATION
FRONT VIEW

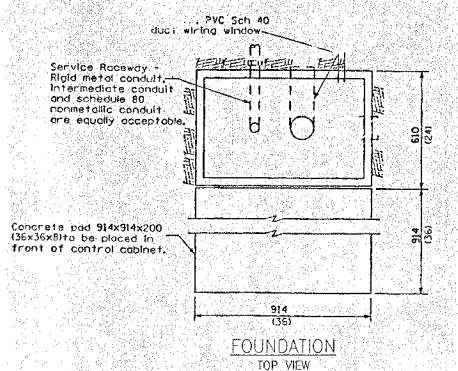


MATERIALS:

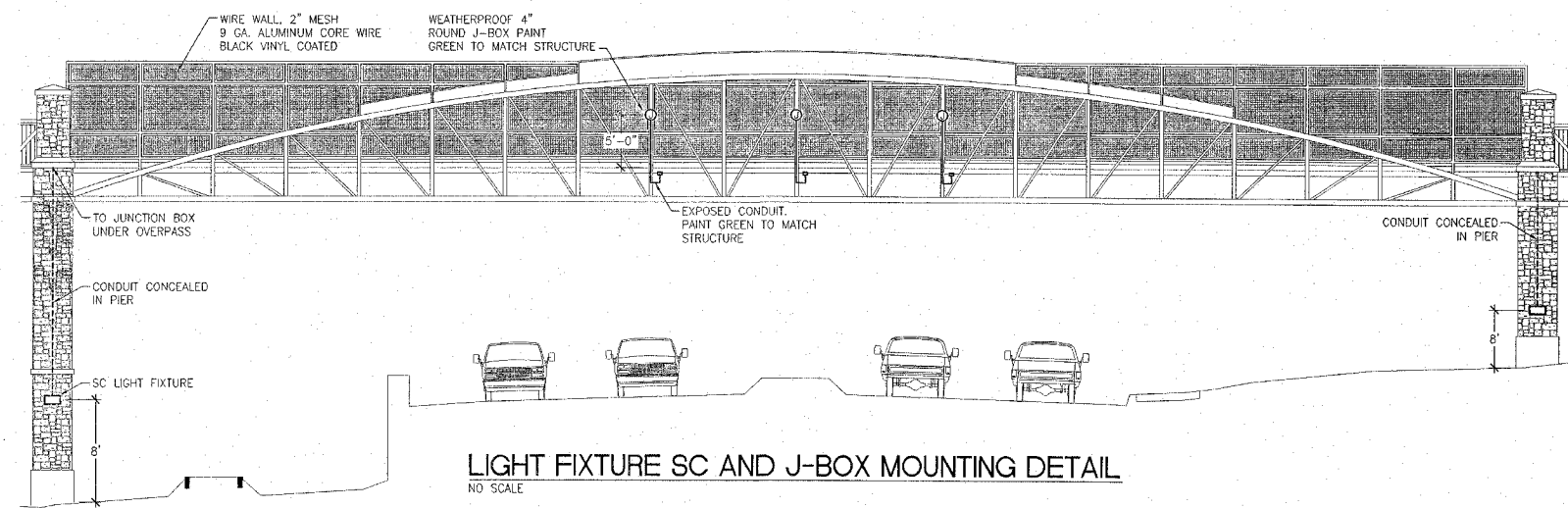
- A. PHOTOCELL W/ INTEGRAL SURGE ARRESTER.
- B. THREE POSITION SELECTOR SWITCH HAND/OFF/AUTO.
- C. SIX POLE RELAY 120 VOLT COIL 20 AMP, 480 VOLT CONTACTS.

GENERAL NOTES:

1. WIRING SHALL BE PANEL BOARD FASHION. ALL BENDS SHALL BE RIGHT ANGLES. ALL RUNS SHALL VERTICAL OR PARALLEL TO PANEL BOARD. WIRES SHALL BE GROUPED OR LACED.
2. ALL CONTROL INSTALLATION COMPONENTS SHALL BE U.L. LISTED.
3. RACEWAYS SHALL TERMINATE 75 (3) ABOVE TOP OF CONCRETE FOUNDATION.
4. LABEL EQUIPMENT GROUND BUSS AND NEUTRAL BUSS.
5. ALL DIMENSIONS ARE IN MILLIMETERS (INCHES) UNLESS OTHERWISE SHOWN.



BASE MOUNTED RELAY CONTROLLER
NO SCALE



LIGHT FIXTURE SC AND J-BOX MOUNTING DETAIL
NO SCALE

REVISIONS

HORNER & SHIFRIN, INC.
ENGINEERS
5300 OAKLAND AVE. - ST. LOUIS, MO 63110-4490
314-531-4321 - FAX 314-531-6966
www.HornerShifrin.com

ALTON, ILLINOIS
PEDESTRIAN OVERPASS AT LANGDON ST.