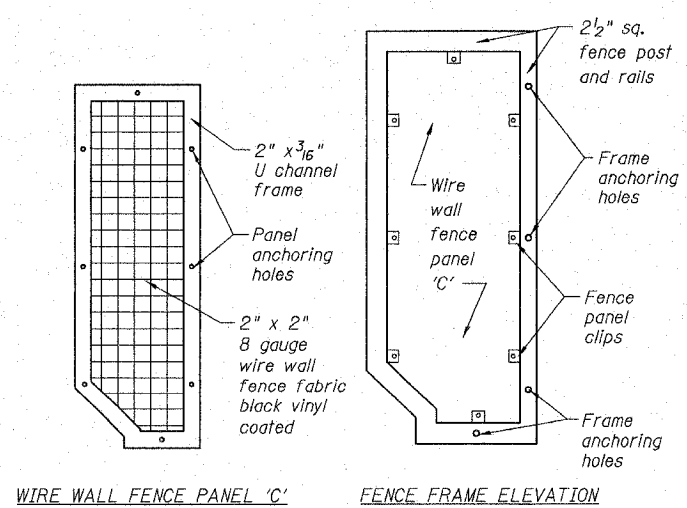
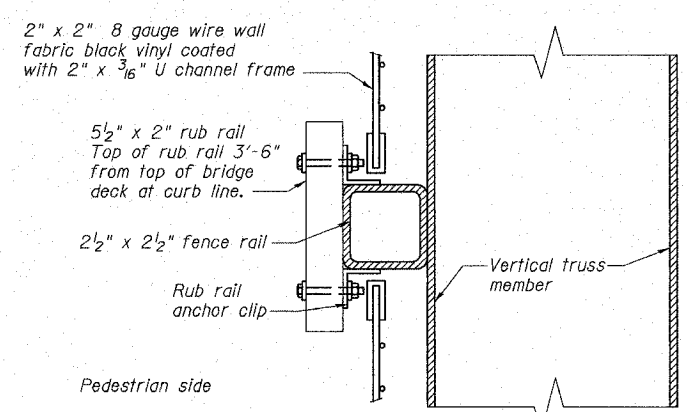
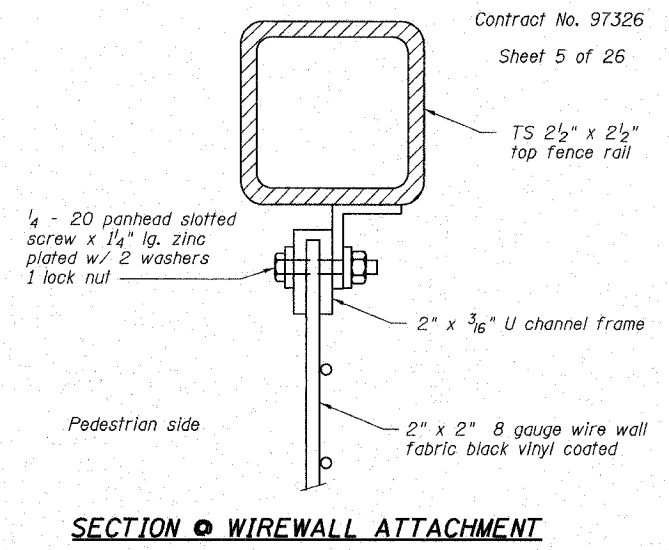
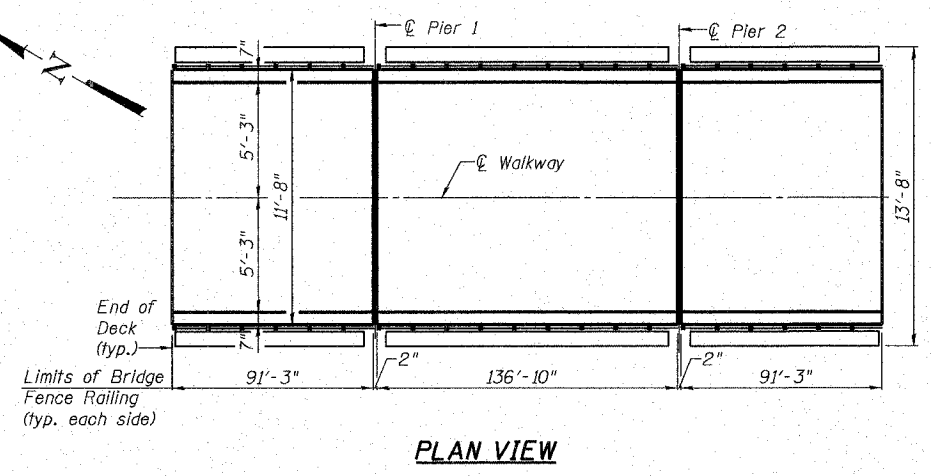
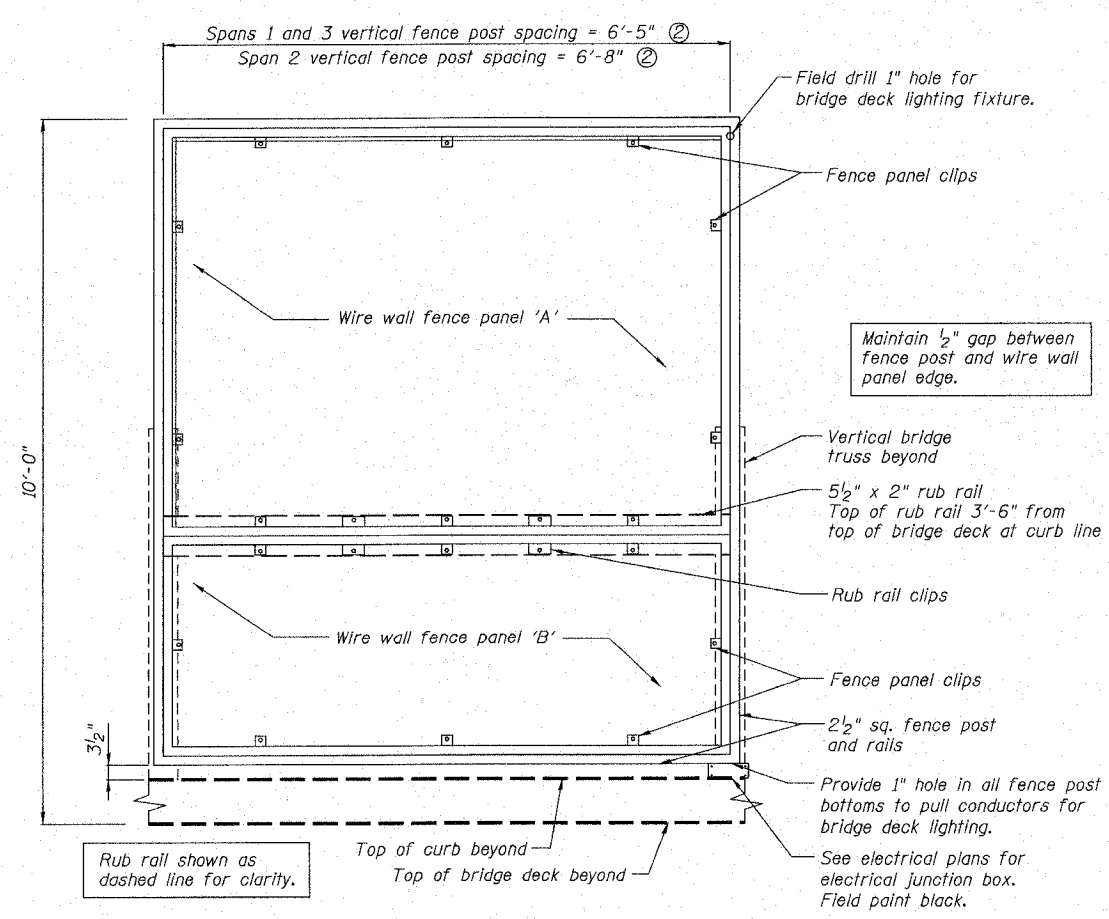
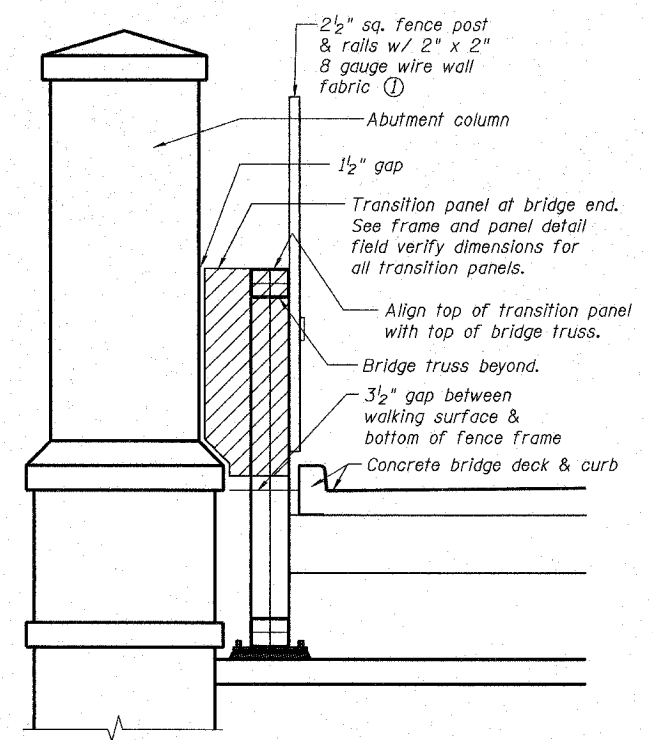


WIRE WALL FENCE PANEL ELEVATIONS



FENCE FRAME & FENCE PANEL ELEVATIONS FROM BRIDGE END



BILL OF MATERIAL

Item	Unit	Quantity
Steel Railing, Type SM	Foot	646

- Notes:
- ① Fence panels should extend 6" past end posts at abutments.
 - ② Adjust all end fence panels at piers to provide a continuous 2" gap between fence panels of bridge spans.

**FENCE & RUB RAIL DETAILS
ALTON PEDESTRIAN WALKWAY OVER
UNION PACIFIC RAILROAD, NORFOLK
SOUTHERN RAILROAD AND US ROUTE 67
SECTION 06-00224-00-BR
MADISON COUNTY
STA. 2+42.54
STRUCTURE NO. 060-6111**

REVISIONS

NO.	DESCRIPTION

Export Business Center 1
100 Lerner Court, Suite 1
Cullerville, Illinois 62224
Phone: 618 345-2200
Facsimile: 618 345-7233
e-mail: info@oatesassociates.com
web-site: www.oatesassociates.com

OATES ASSOCIATES
Consulting Engineers

ALTON, ILLINOIS
PEDESTRIAN OVERPASS AT LANGDON ST.