

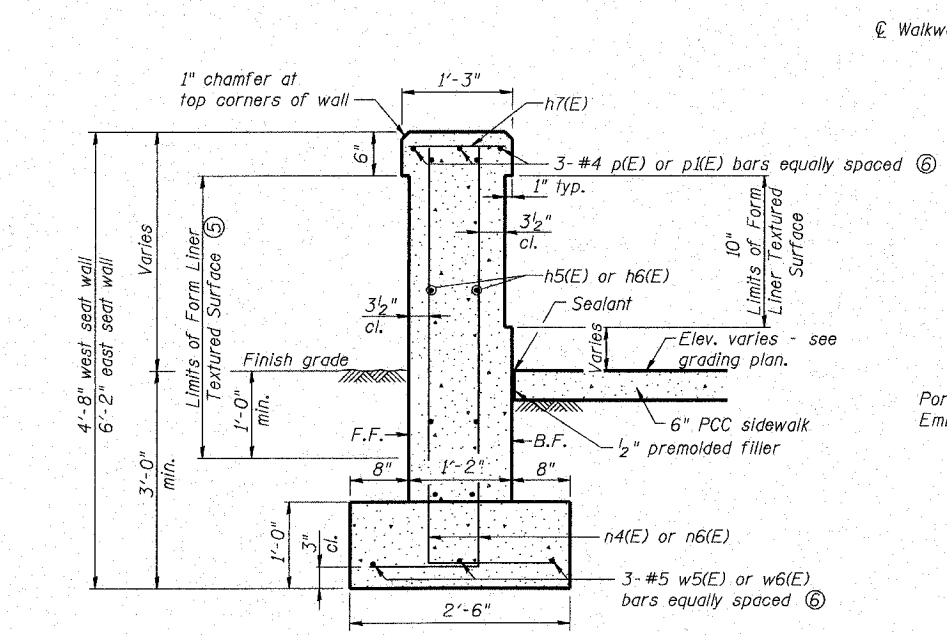
REVISIONS

Eastern Business Center I
100 Lantz Court, Suite 1
Columbia, Illinois 62224
Phone: 618 345-2200
Facsimile: 618 345-2233
e-mail: oates@oatesassociates.com
web-site: www.oatesassociates.com

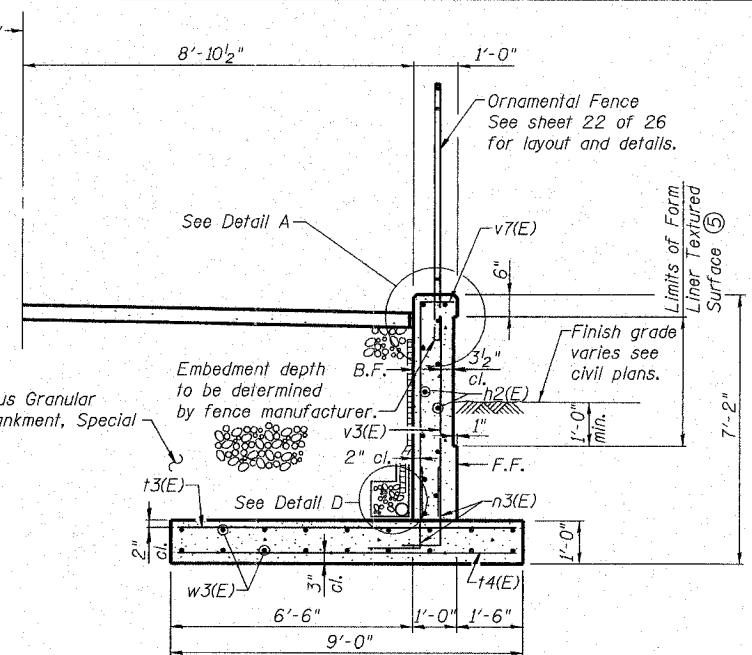


ALTON, ILLINOIS
PEDESTRIAN OVERPASS AT LANGDON ST.

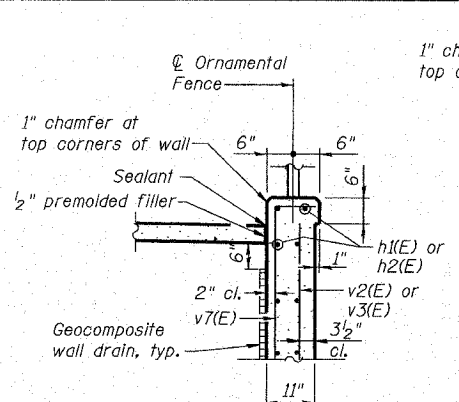
DWG. NO. S10
6111-10-MABUTDLSHT2.DGN
REF. BK. PG.
JOB NO. 26053
DSN. BY: JCS
DWN. BY: JCS
CHK. BY: DGL
DATE: 3/28/08
SCALE:
SHEET 30 OF 54



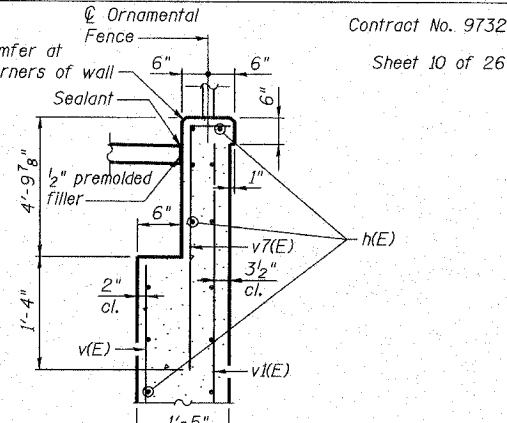
SECTION A-A



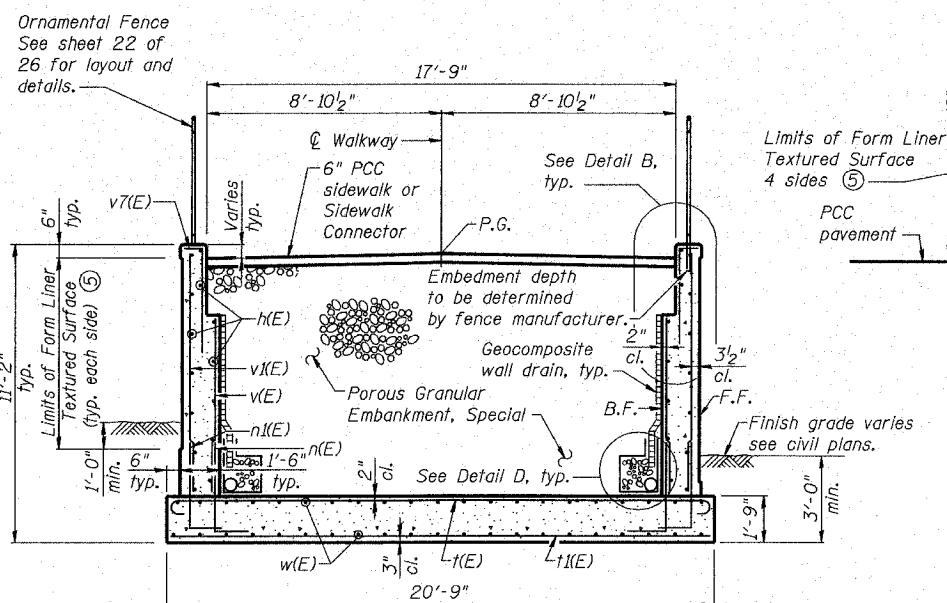
SECTION D-D



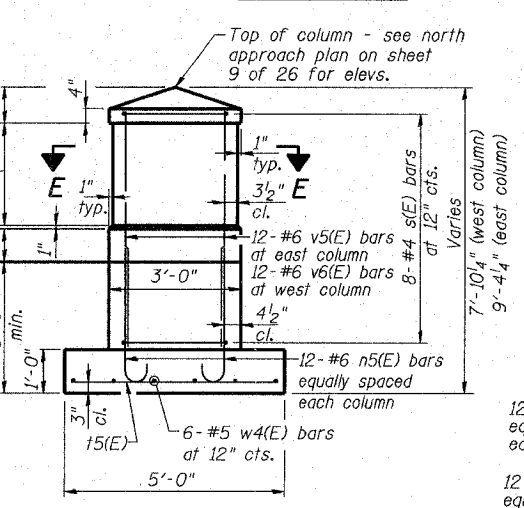
DETAIL A



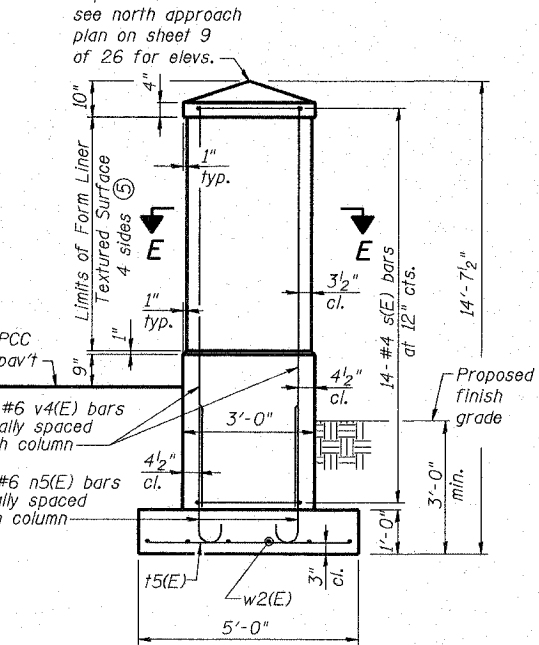
DETAIL B



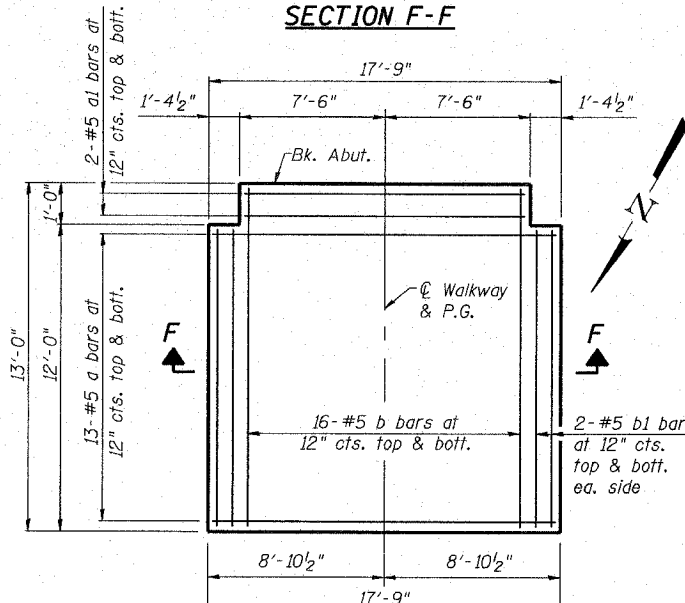
SECTION B-B



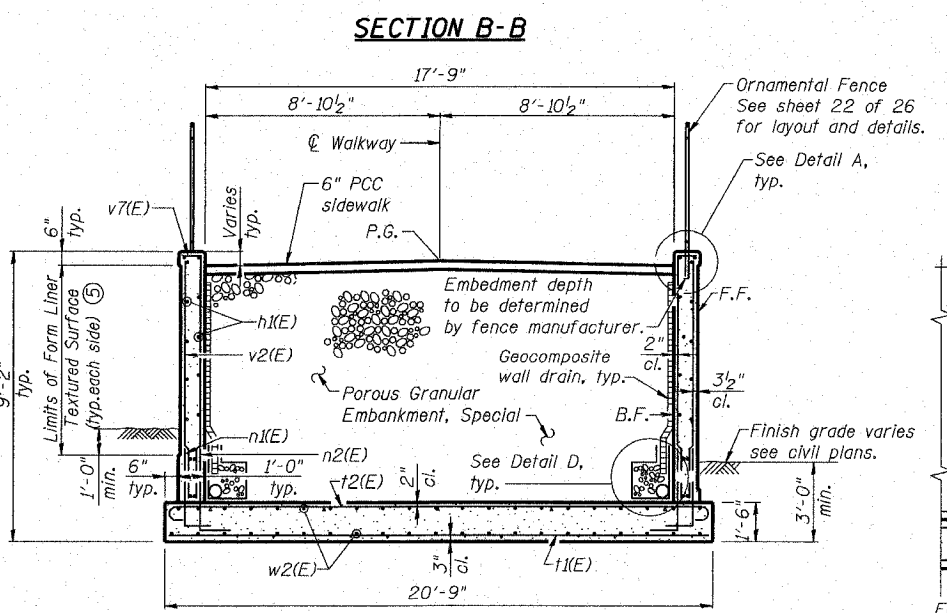
COLUMN A



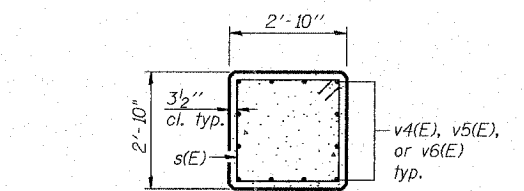
COLUMN B



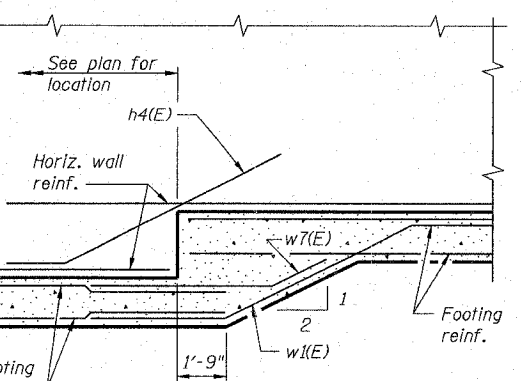
SIDEWALK CONNECTOR PLAN



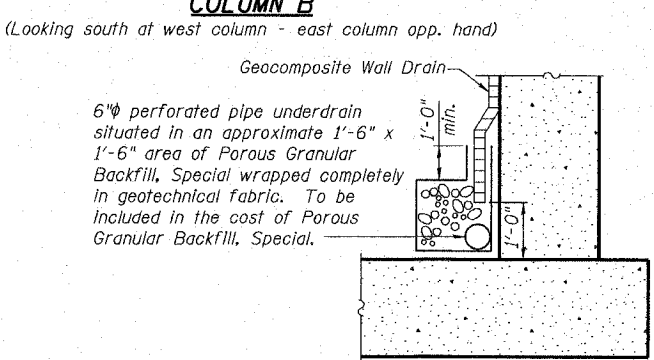
SECTION C-C



SECTION E-E



DETAIL C



DETAIL D

- Notes:
- Space reinforcement in cap to miss fence inserts.
 - All edges shall have 1/2" chamfer unless noted otherwise.
 - B.F. denotes back face. F.F. denotes front face.
 - Cost of reinforcement bars for the connector pavement is included in Sidewalk Connector.
 - See sheet 11 of 26 for limits of Form Liner Textured Surface Rubbed Finish, and expansion & control joint details.
 - Bend p(E), h5(E) and w5(E) bars as required to achieve equal spacing.

BILL OF MATERIAL ④

(For North Sidewalk Connector)
(For Information Only)

Bar	No.	Size	Length	Shape	
a	26	#5	17'-4"		
a1	4	#5	14'-8"		
b	32	#5	12'-8"		
b1	8	#5	11'-8"		
Reinforcement Bars				Pound	1,050

**NORTH ABUTMENT
RETAINING WALL DETAILS
ALTON PEDESTRIAN WALKWAY OVER
UNION PACIFIC RAILROAD, NORFOLK
SOUTHERN RAILROAD AND US ROUTE 67
SECTION 06-00224-00-BR
MADISON COUNTY
STA. 2+42.54
STRUCTURE NO. 060-6111**