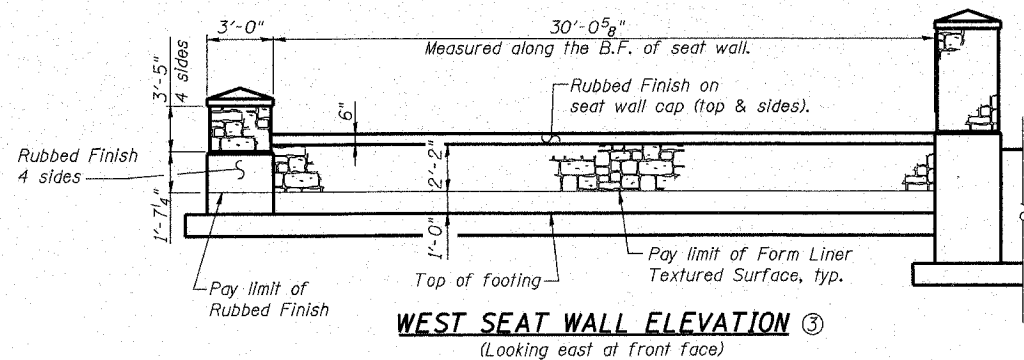
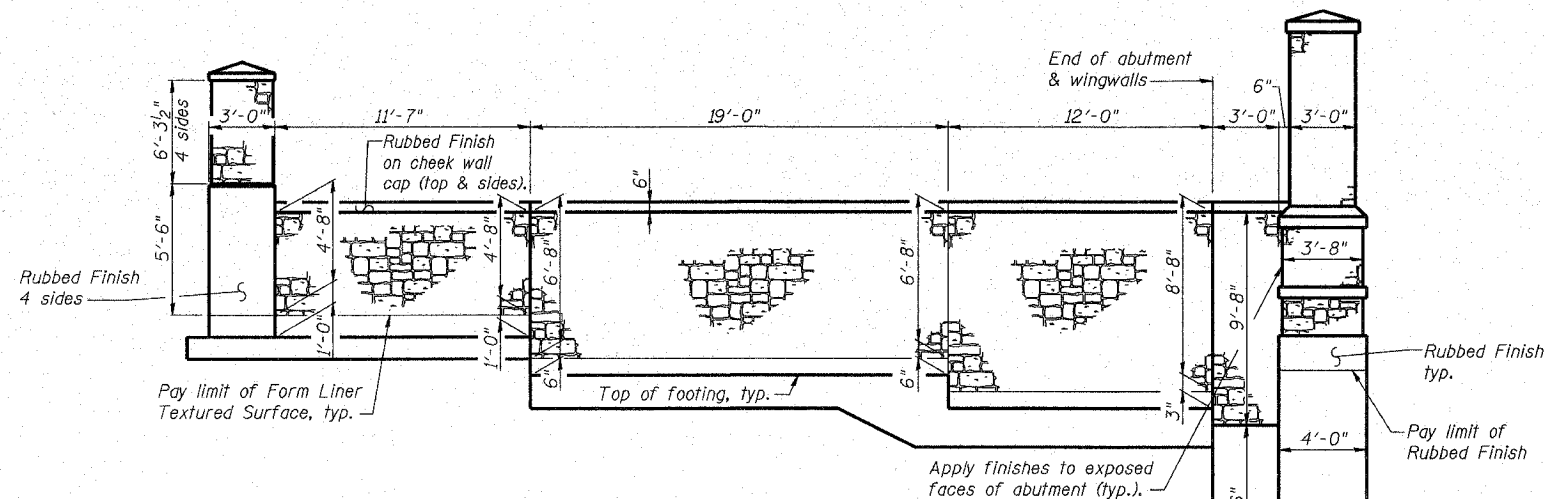


**CONTROL JOINT**

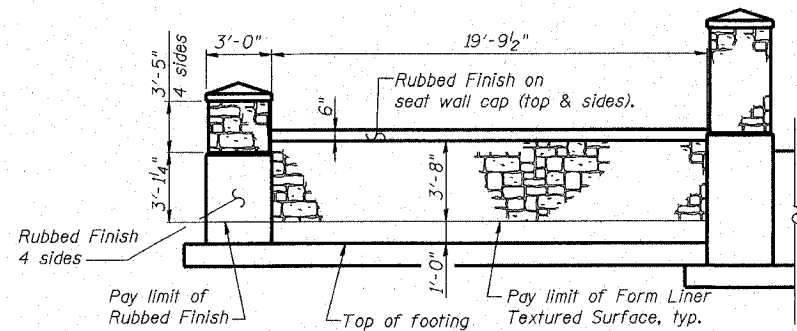
**EXPANSION JOINT**



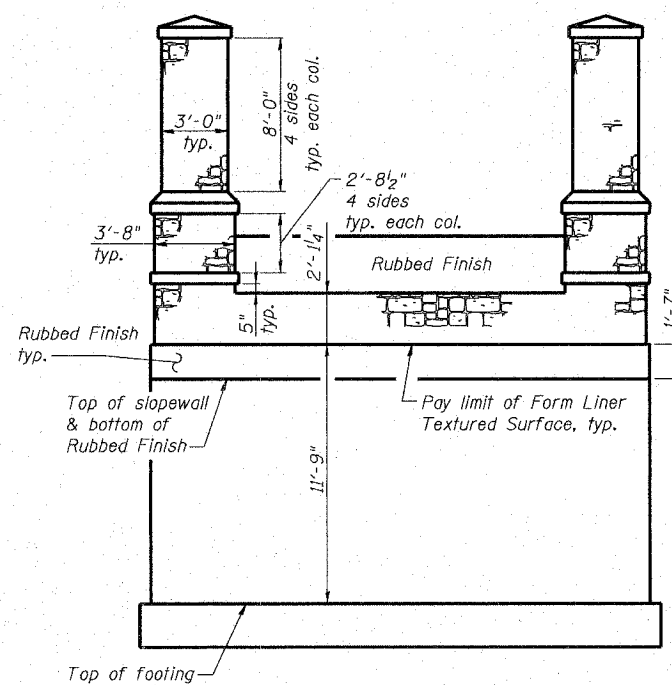
**WEST SEAT WALL ELEVATION ③**  
(Looking east at front face)



**NORTH APPROACH ELEVATION**  
(West wall shown - East wall opposite hand)  
Looking at the front face.



**EAST SEAT WALL ELEVATION ③**  
(Looking west at front face)



**ABUTMENT ELEVATION**  
(front face shown)

Limits of Form Liner Textured Surface

**BILL OF MATERIAL**

(For North Abutment and Retaining Walls)

Item	Unit	Quantity
Form Liner Textured Surface	Sq. Ft.	1,268
Rubbed Finish	Sq. Ft.	512

**NORTH ABUTMENT & RETAINING WALL  
FORM LINER DETAILS  
ALTON PEDESTRIAN WALKWAY OVER  
UNION PACIFIC RAILROAD, NORFOLK  
SOUTHERN RAILROAD AND US ROUTE 67  
SECTION 06-00224-00-BR  
MADISON COUNTY  
STA. 2+42.54  
STRUCTURE NO. 060-6111**

**Notes:**

- Concrete Form Liner Textured Surface required as shown in elevation views. See special provisions for Form Liner Textured Surface specifications.
- Architectural bump outs and column caps shall have a Rubbed Finish.
- See sheet 10 of 26 for Form Liner Textured Surface limits on inside face of seat wall.
- B.F. denotes back face.  
F.F. denotes front face.

REVISIONS

Englewood Business Center I  
100 Lantier Court, Suite 1  
Cullman, Illinois 62224  
Phone: 618 345-2500  
Fax: 618 345-7233  
e-mail: info@oatesassociates.com  
www: www.oatesassociates.com

**OATES ASSOCIATES**  
Consulting Engineers

ALTON, ILLINOIS  
PEDESTRIAN OVERPASS AT LANGDON ST.