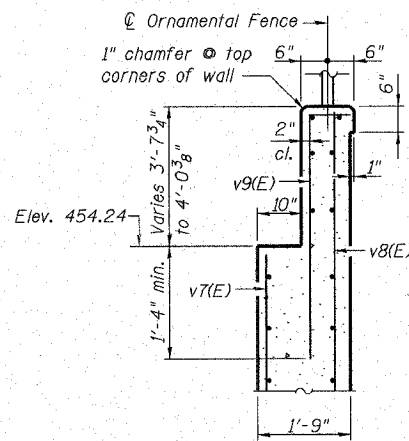
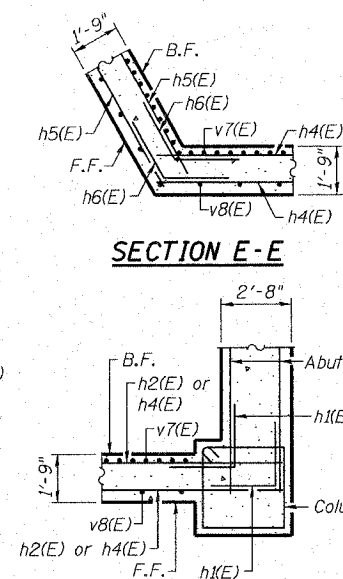


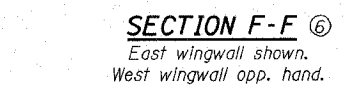
SECTION D-D (looking north)



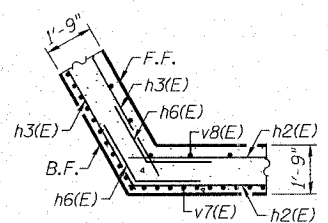
DETAIL A



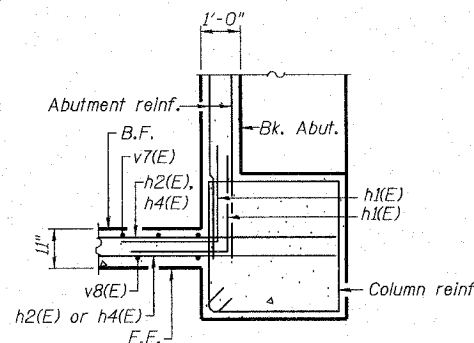
SECTION E-E



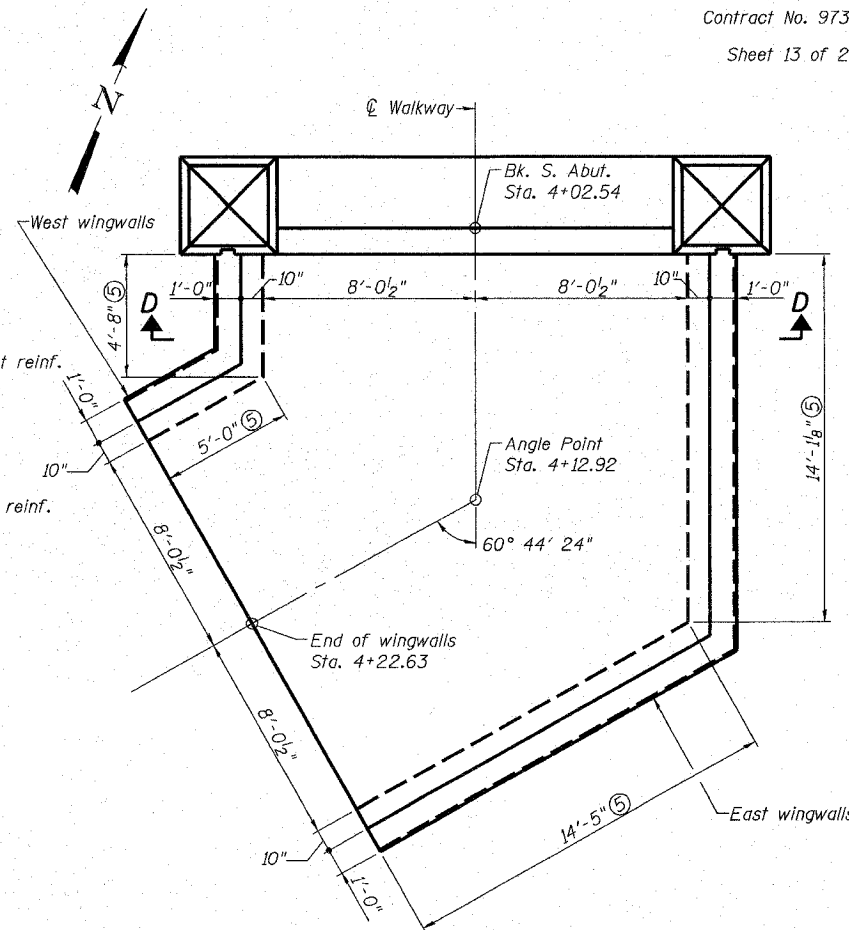
SECTION F-F (East wingwall shown, West wingwall opp. hand.)



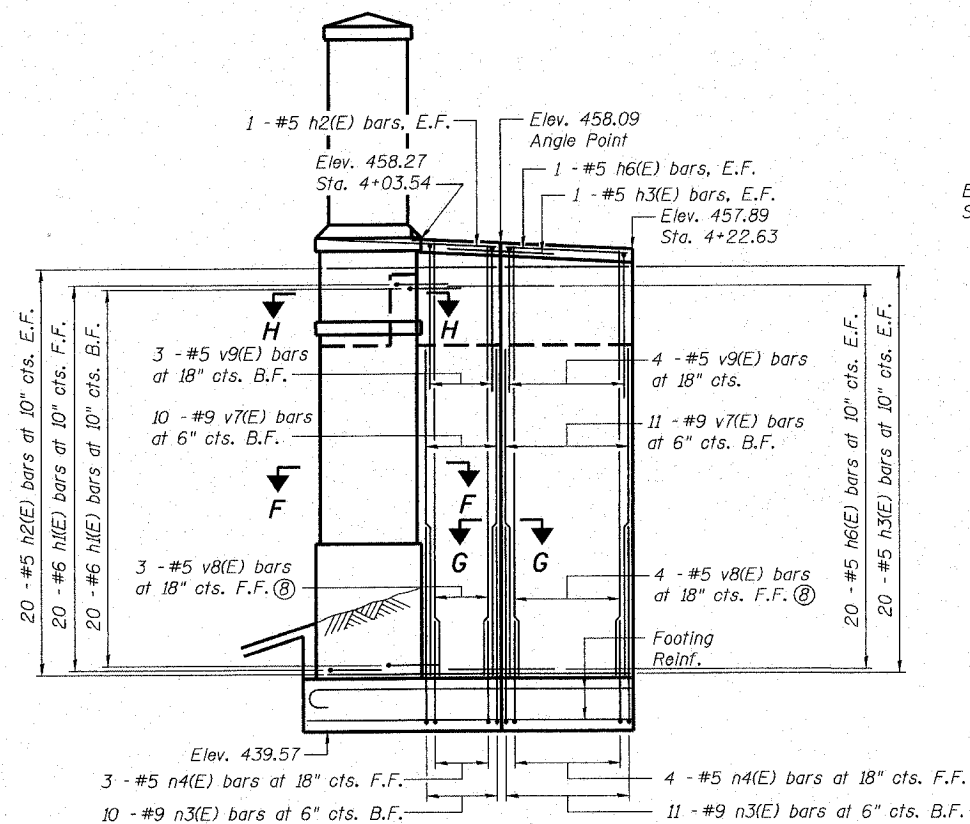
SECTION G-G



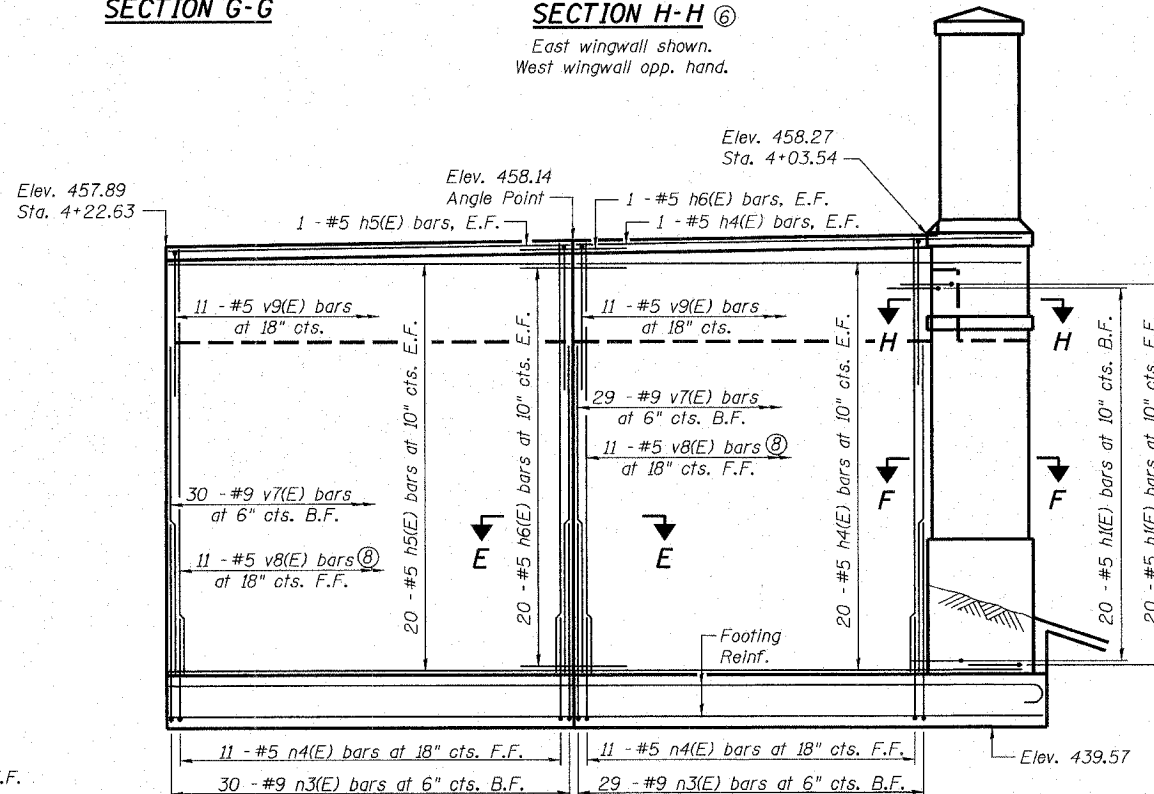
SECTION H-H (East wingwall shown, West wingwall opp. hand.)



WINGWALL PLAN (Foundation and Ornamental Fence not shown for clarity)



WEST WINGWALL ELEVATION (Steel H-Piles and Ornamental Fence not shown for clarity)



EAST WINGWALL ELEVATION (Steel H-Piles and Ornamental Fence not shown for clarity)

- Notes:
- For details of foundation, see sheet 14 of 26.
 - See sheet 18 of 26 for limits of Form Liner Textured Surface and Rubbed Finish.
 - All edges shall have 1/2" chamfer unless noted otherwise.
 - B.F. denotes back face. F.F. denotes front face. E.F. denotes each face.
 - Measured along back face of wall.
 - For details of abutment and columns, see sheet 12 of 26.
 - For bar bending details and Bill of Materials, see sheet 12 of 26.
 - Adjust v8(E) bars to hold 2" clear cover between bars and top of cheek wall and vary lap length between v8(E) and n4(E) bars.

SOUTH ABUTMENT DETAILS
ALTON PEDESTRIAN WALKWAY OVER
UNION PACIFIC RAILROAD, NORFOLK
SOUTHERN RAILROAD AND US ROUTE 67
SECTION 06-00224-00-BR
MADISON COUNTY
STA. 2+42.54
STRUCTURE NO. 060-6111

REVISIONS

Geopoint Business Center 1
 100 Center Court, Suite 1
 Collinsville, Illinois 62234
 Phone: 618 342-7200
 Fax: 618 345-7233
 e-mail: info@geopoint.com
 web-site: www.geopoint.com

GATES ASSOCIATES
 Consulting Engineers

ALTON, ILLINOIS
PEDESTRIAN OVERPASS AT LANGDON ST.

DWG. NO. S13
 6111-13-SOUTHABTSH12.DGN
 REF. BK. PG.
 JOB NO. 26053
 DSN. BY: DGL
 DWN. BY: DGL
 CHK. BY: NEL
 DATE: 3/28/08
 SCALE:
 SHEET 33 OF 54