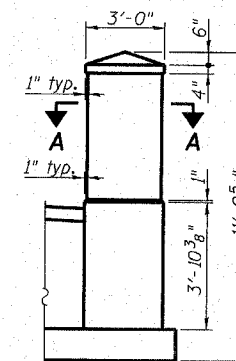
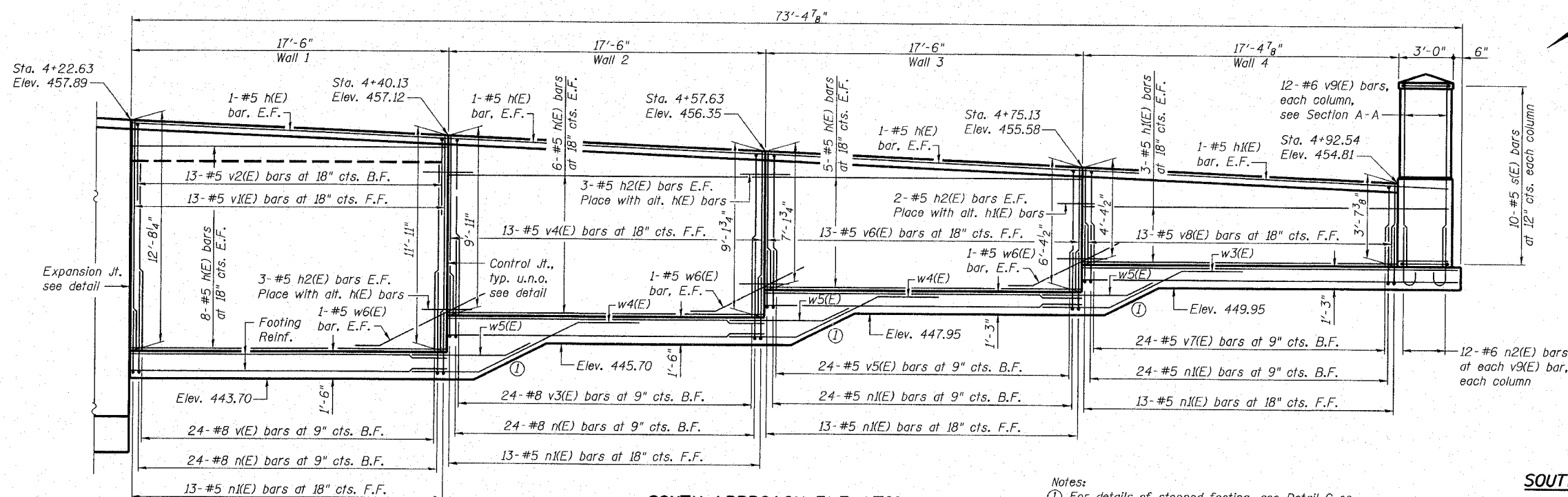


SOUTH APPROACH FOOTING PLAN ⑥



SECTION E-E

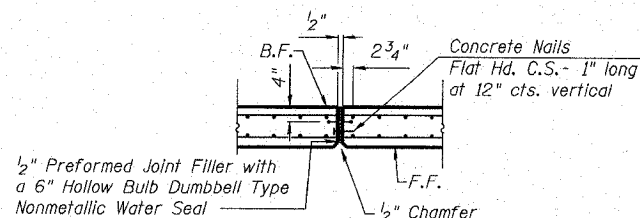


SOUTH APPROACH ELEVATION

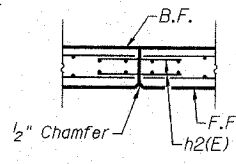
(North wall shown. South wall similar.
Bar callouts for one wall.)

**SOUTH ABUTMENT RETAINING WALL
PLAN AND DETAILS
ALTON PEDESTRIAN WALKWAY OVER
UNION PACIFIC RAILROAD, NORFOLK
SOUTHERN RAILROAD AND US ROUTE 67
SECTION 06-00224-00-BR
MADISON COUNTY
STA. 2+42.54
STRUCTURE NO. 060-6111**

- Notes:
- ① For details of stepped footing, see Detail C on sheet 17 of 26.
 - ② See sheet 18 of 26 for limits of Form Liner Textured Surface and Rubbed Finish.
 - ③ All edges shall have 1/2" chamfer unless noted otherwise.
 - ④ B.F. denotes back face. F.F. denotes front face. E.F. denotes each face.
 - ⑤ For bar bending details and bill of materials, see sheet 17 of 26.
 - ⑥ Bars n(E) thru n2(E) to be cast with footing. Bars billed in south approach elevation view for clarity.
 - ⑦ For sections B-B, C-C & D-D, see sheet 17 of 26.



EXPANSION JOINT



CONTROL JOINT

REVISIONS

Eastport Business Center 1
100 Luster Court, Suite 1
Columbia, MD 21046
Phone: 410-346-2200
Fax: 410-346-2201
E-mail: columbia@eastport.com
Web: www.eastport.com

QATES ASSOCIATES
Consulting Engineers

ALTON, ILLINOIS
PEDESTRIAN OVERPASS AT LANGDON ST.