

T.R. RTE.	SECTION	COUNTY	TOTAL SHEETS	SHEET NO.
50	05-03104-00-BR	JERSEY	12	1
CONTRACT NO. 97334				
FED. ROAD DIST. NO. - ILLINOIS FED. AID PROJECT				

**INDEX OF SHEETS**

- 1 - TITLE SHEET
- 2 - SUMMARY OF QUANTITIES, GENERAL NOTES, DETAILS, & TYPICAL SECTIONS
- 3 - PLAN & PROFILE
- 4 - GENERAL PLAN & ELEVATION
- 5 - SUPERSTRUCTURE
- 6 - RAILING
- 7 - SOUTH ABUTMENT
- 8 - NORTH ABUTMENT
- 9 - ABUTMENT DETAILS
- 10 - 12 - CROSS SECTIONS

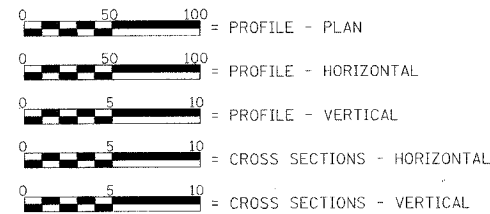
**STANDARDS**

- STANDARD 515001-02
- STANDARD 701901
- STANDARD BLR 21-7

**LIST OF UTILITIES**

- Frontier Communications  
225 N. Broad Street  
Carlinville, Illinois 62626  
1-217-854-4013
- M.J.M. Electric Cooperative, Inc.  
P.O. Box 80  
Carlinville, Illinois 62626  
1-217-854-3137
- Jersey County Rural Water  
1009 E. Shipman Road  
Jerseyville, Illinois 62052  
1-618-498-9534

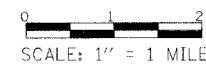
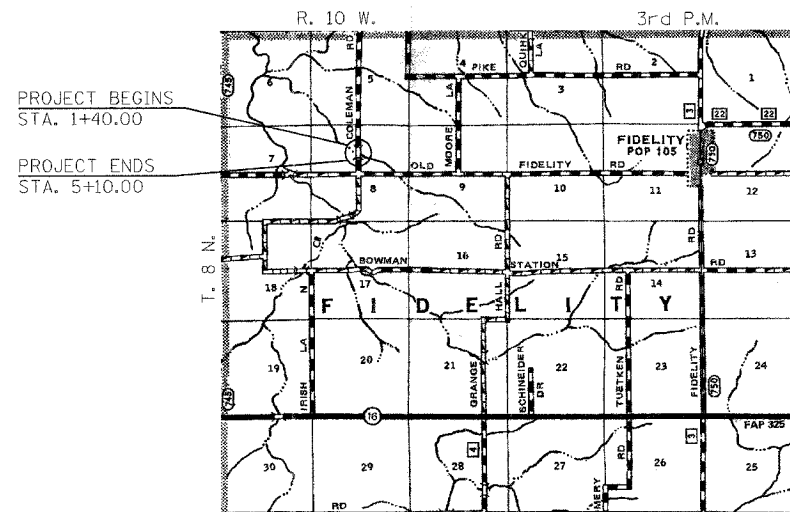
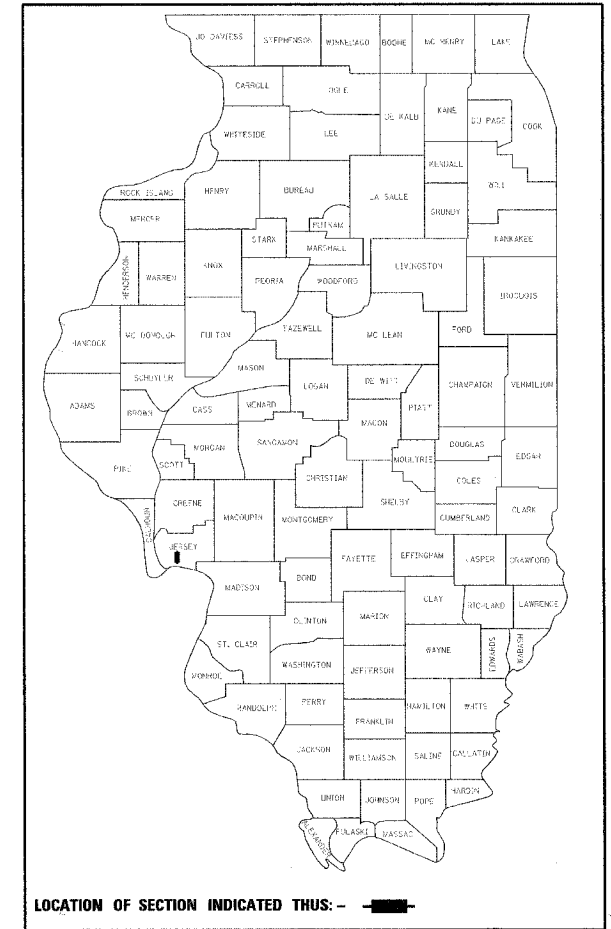
**SCALE IN FEET**



LAND SECTION - 8  
 LAND QUARTER SECTION - N.E.  
 FUNCTIONAL CLASSIFICATION: LOCAL ROAD (NON-URBAN)  
 A.D.T. - 75 (2002)  
 A.D.T. - 120 (2021)  
 30 M.P.H. DESIGN SPEED

# STATE OF ILLINOIS DEPARTMENT OF TRANSPORTATION PLANS FOR PROPOSED HIGHWAY BRIDGE PROGRAM

**PROJECT NO. BROS-0083(041)  
 T.R. 50 OVER TRIBUTARY OF PHILS CREEK  
 SECTION 05-03104-00-BR  
 FIDELITY TOWNSHIP  
 JERSEY COUNTY  
 JOB NO. C-98-358-06**



EXISTING STRUCTURE:  
 SINGLE SPAN POURED CONCRETE DECK ON STEEL STRINGERS FOUNDED ON CLOSED CONCRETE ABUTMENTS. ±20'-0" OUT.-OUT. DECK, ±20'-6" BK.-BK. ABUTMENTS. STEEL CHANNEL RAIL POSTS WITH NO RAILING. 0° SKEW.  
 EXISTING STRUCTURE NO. 042-3049.

PROPOSED STRUCTURE:  
 SINGLE SPAN PRECAST PRESTRESSED CONCRETE DECK BEAM (21') BRIDGE ON CLOSED CONCRETE ABUTMENTS. 24'-0" OUT. TO OUT. DECK, 48'-0" BK.-BK. ABUTMENTS. STEEL RAILING TYPE S1. 25° SKEW LT. FORWARD.  
 PROPOSED STRUCTURE NO. 042-3144.



*Christopher P. Koblun* 2/19/08  
 EXPIRATION: 11/30/2009

APPROVED: 2/15, 2008  
*Randy Williams*  
 TOWNSHIP HIGHWAY COMMISSIONER

APPROVED: 2/15, 2008  
*Thomas I. Wanner*  
 COUNTY ENGINEER

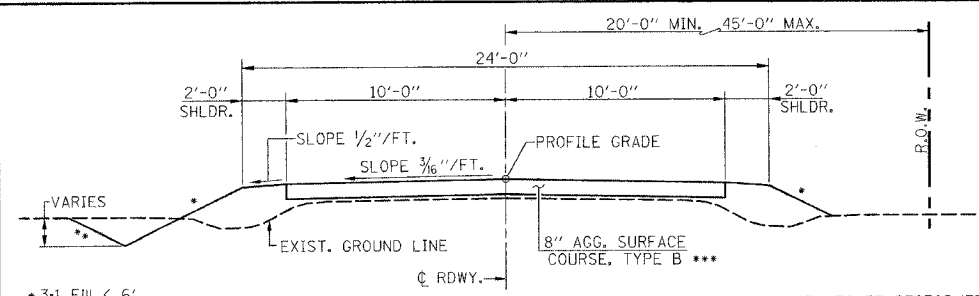
PASSED: 4/9, 2008  
*[Signature]*  
 DISTRICT EIGHT ENGINEER OF LOCAL ROADS & STREETS

Releasing For Bid Based on Limited Review: 4/9, 2008  
*Wayne [Signature]*  
 DEPUTY DIRECTOR OF HIGHWAYS, REGION FIVE ENGINEER

STATE OF ILLINOIS  
 DEPARTMENT OF TRANSPORTATION

TOLL FREE  
 "JOINT UTILITY LOCATION INFORMATION FOR EXCAVATORS"  
 (J.U.L.I.E.) TELEPHONE NUMBER  
 1-800-892-0123

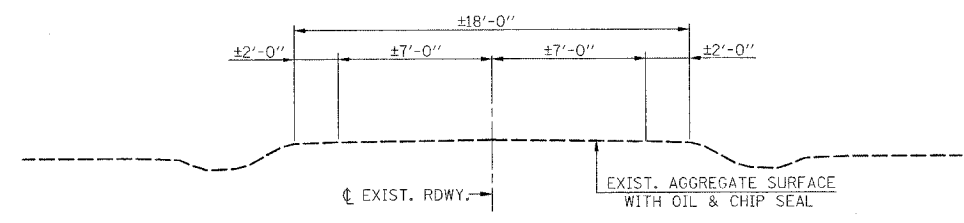
FILE NAME =	USER NAME = #USER#	DESIGNED -	REVISED -	 <b>Allen Henderson &amp; Associates, Inc.</b> Civil and Structural Engineers Springfield, IL 62703 Phone: (217)544-8033 IL Design Firm No. 184-001907	<b>TITLE SHEET</b>	T.R. RTE.	SECTION	COUNTY	TOTAL SHEETS	SHEET NO.
#FILE#		DRAWN -	REVISED -		SCALE: 1" = 1 MILE   SHEET NO. 1 OF 12 SHEETS	50	05-03104-00-BR	JERSEY	12	1
PLANT SCALE = #SCALE#		CHECKED -	REVISED -		STA. 1+40.00 TO STA. 5+10.00	<b>CONTRACT NO. 97334</b>				
PILOT DATE = #DATE#		DATE -	REVISED -		FED. ROAD DIST. NO. - ILLINOIS FED. AID PROJECT					



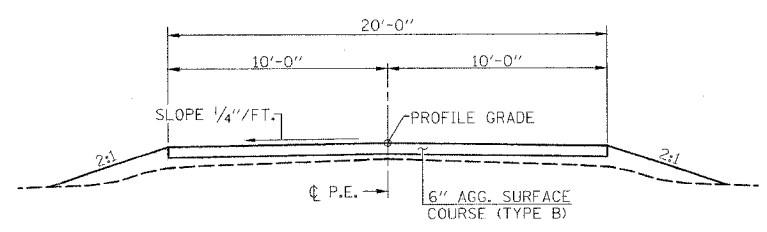
- 3:1 Fill ≤ 6'
- 2:1 Fill > 6'
- 3:1 Cut ≤ 6'
- 2:1 Cut > 6'

**PROPOSED CROSS SECTION**

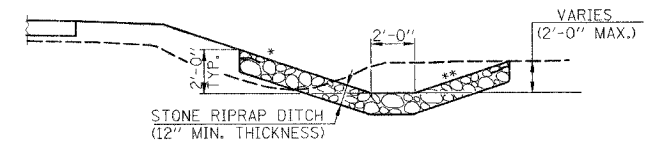
\*\*\* - WORK TO BE PERFORMED BY COUNTY FORCES ESTIMATED AGGREGATE SURFACE COURSE, TYPE B - 338 TON



**EXISTING CROSS SECTION**

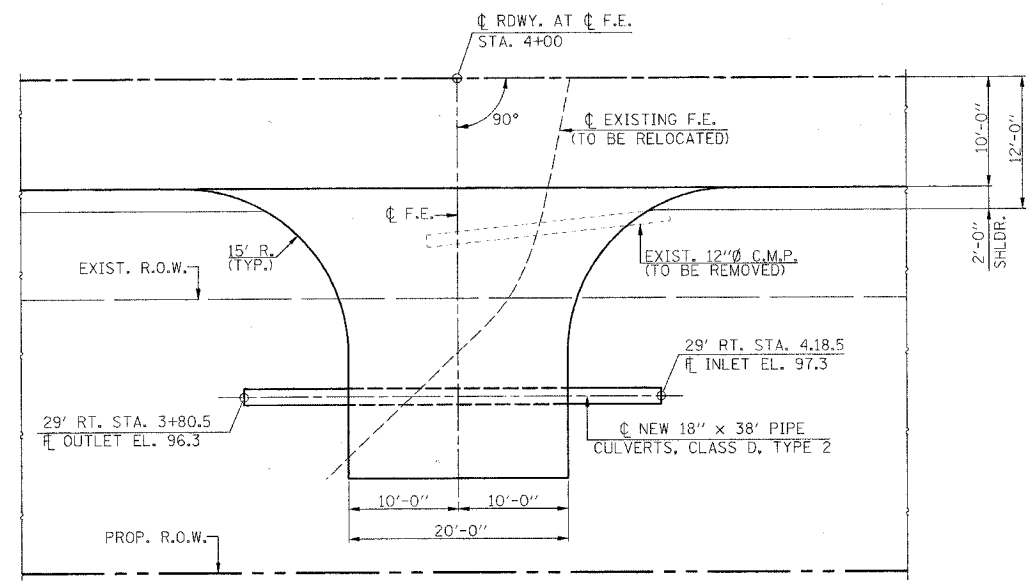


**TYPICAL FIELD ENTRANCE**  
(STA. 4+00 RT.)



**STONE RIPRAP DITCH DETAIL**  
(STA. 1+40 TO STA. 2+60 RT. & STA. 1+40 TO STA. 2+76 LT.)

- 3:1 Fill ≤ 6'
- 2:1 Fill > 6'
- 3:1 Cut ≤ 6'
- 2:1 Cut > 6'

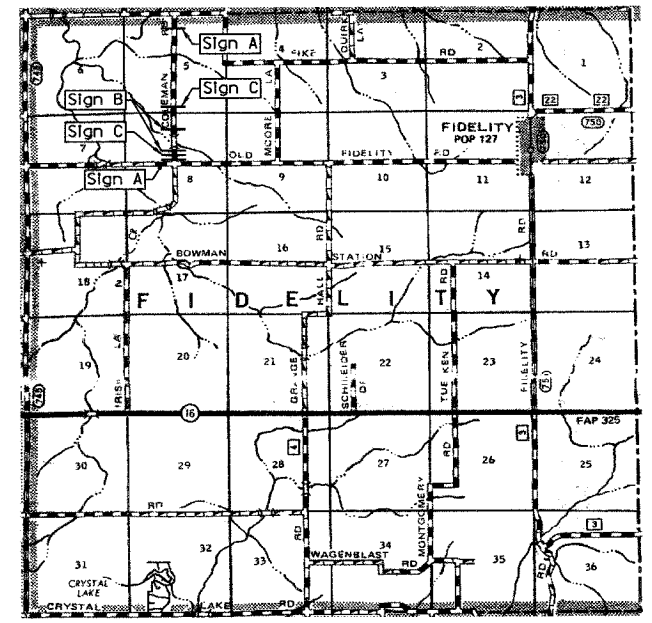


**PLAN**

**EARTHWORK SCHEDULE**

LOCATION	EARTH EXCAVATION	EARTH EXCAVATION ADJUSTED FOR SHRINKAGE	EMBANKMENT	EARTHWORK BALANCE WASTE (+) OR SHORTAGE (-)
	CU. YD.	CU. YD.	CU. YD.	CU. YD.
STA. 1+40 TO STA. 1+50	29	22	0	22
STA. 1+50 TO STA. 2+00	374	280	4	276
STA. 2+00 TO STA. 2+50	425	319	26	293
STA. 2+50 TO STA. 2+83.50	263	197	31	166
BRIDGE OMISSION STA. 2+83.50 TO STA. 3+31.50				
STA. 3+31.50 TO STA. 3+50	2	1	99	-98
STA. 3+50 TO STA. 4+00	26	20	184	-164
STA. 4+00 TO STA. 4+50	34	26	115	-89
STA. 4+50 TO STA. 5+00	24	18	20	-2
STA. 5+00 TO STA. 5+10	3	2	1	1
<b>TOTAL</b>	<b>1180</b>	<b>885</b>	<b>480</b>	<b>405</b>

NO FURNISHED EXCAVATION WILL BE REQUIRED. JERSEY COUNTY AND FIDELITY TOWNSHIP WILL PROVIDE TRUCKS TO DISPOSE OF EXCESS EARTH EXCAVATION & CHANNEL EXCAVATION. CONTRACTOR WILL BE RESPONSIBLE FOR LOADING THE TRUCKS.



**BARRICADE LOCATION**  
(Not to Scale)

**SUMMARY OF QUANTITIES**

CODE NO.	ITEM	UNIT	QUANTITY
20100500	TREE REMOVAL, ACRES	ACRE	0.5
20200100	EARTH EXCAVATION	CU. YD.	1180
20300100	CHANNEL EXCAVATION	CU. YD.	984
25001000	SEEDING CLASS 2, SPECIAL	ACRE	0.5
28100807	STONE DUMPED RIPRAP, CLASS A4	TON	421
28102600	STONE RIPRAP DITCH	TON	77
28200200	FILTER FABRIC	SO. YD.	632
50100100	REMOVAL OF EXISTING STRUCTURES	EACH	1
50200100	STRUCTURE EXCAVATION	CU. YD.	262
50300225	CONCRETE STRUCTURES	CU. YD.	104.4
50400405	PRECAST PRESTRESSED CONCRETE DECK BEAMS (21" DEPTH)	SO. FT.	1117
50800105	REINFORCEMENT BARS	POUND	15260
50900205	STEEL RAILING, TYPE S1	FOOT	96
51201400	FURNISHING STEEL PILES HP 10X42	FOOT	696
51202305	DRIVING PILES	FOOT	696
51203400	TEST PILE, STEEL HP 10X42	EACH	2
51500100	NAME PLATES	EACH	1
542D1063	PIPE CULVERTS, CLASS D, TYPE 2 18"	FOOT	38
67100100	MOBILIZATION	L. SUM	1
70101830	TRAFFIC CONTROL AND PROTECTION STANDARD BLR 21	L.SUM	1
78201000	TERMINAL MARKER - DIRECT APPLIED	EACH	4
X5020501	UNDERGROUND STRUCTURE EXCAVATION PROTECTION - LOCATION 1	EACH	1
X5020502	UNDERGROUND STRUCTURE EXCAVATION PROTECTION - LOCATION 2	EACH	1

**GENERAL NOTES**

MULCH SHALL BE APPLIED AT THE RATE OF 2 TONS PER ACRE. AREAS TO BE SEEDDED SHALL CONSIST OF ALL DISTURBED EARTH SURFACES WITHIN THE RIGHT OF WAY AS DIRECTED BY THE ENGINEER. NO COMMITMENTS.

**LEGEND**

SIGN A - "ROAD CLOSED AHEAD" W20-3(0) 4848  
SIGN B - BLR STANDARD 21  
SIGN C - "ROAD CLOSED 500 FEET" W20-3(0) 4848

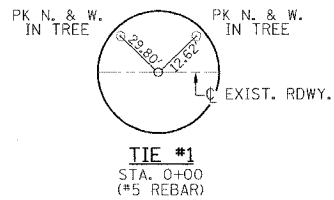
FILE NAME	USER NAME	DESIGNED	REVISED
971.ELB	BUSBY	---	---
	PLLOT SCALE = 1"=40'	CHECKED	REVISED
	PLLOT SCALE = 8"=100'	---	---
		DATE	REVISED
		---	---

**Allen Henderson & Associates, Inc.**  
Civil and Structural Engineers Springfield, IL.  
62703 Phone: (217)544-8033 IL Design Firm  
No. 184-001907

<b>SUMMARY OF QUANTITIES, GENERAL NOTES, DETAILS &amp; TYPICAL SECTIONS</b>		
SCALE: NONE	SHEET NO. 2 OF 12 SHEETS	STA. 1+40.00 TO STA. 5+10.00

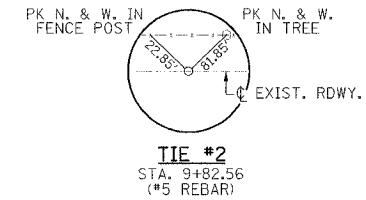
SECTION T. 8 N. R. 10 W., 3rd P.M.

T.R. RTE.	SECTION	COUNTY	TOTAL SHEETS	SHEET NO.
50	05-03104-00-BR	JERSEY	12	3
CONTRACT NO. 97334				
FED. ROAD DIST. NO. ILLINOIS FED. AID PROJECT				

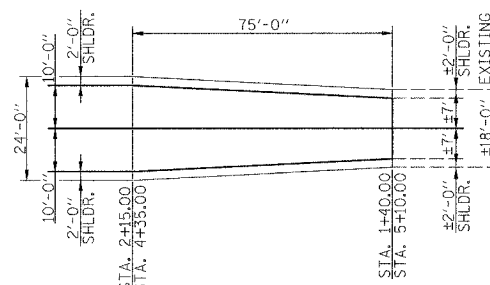
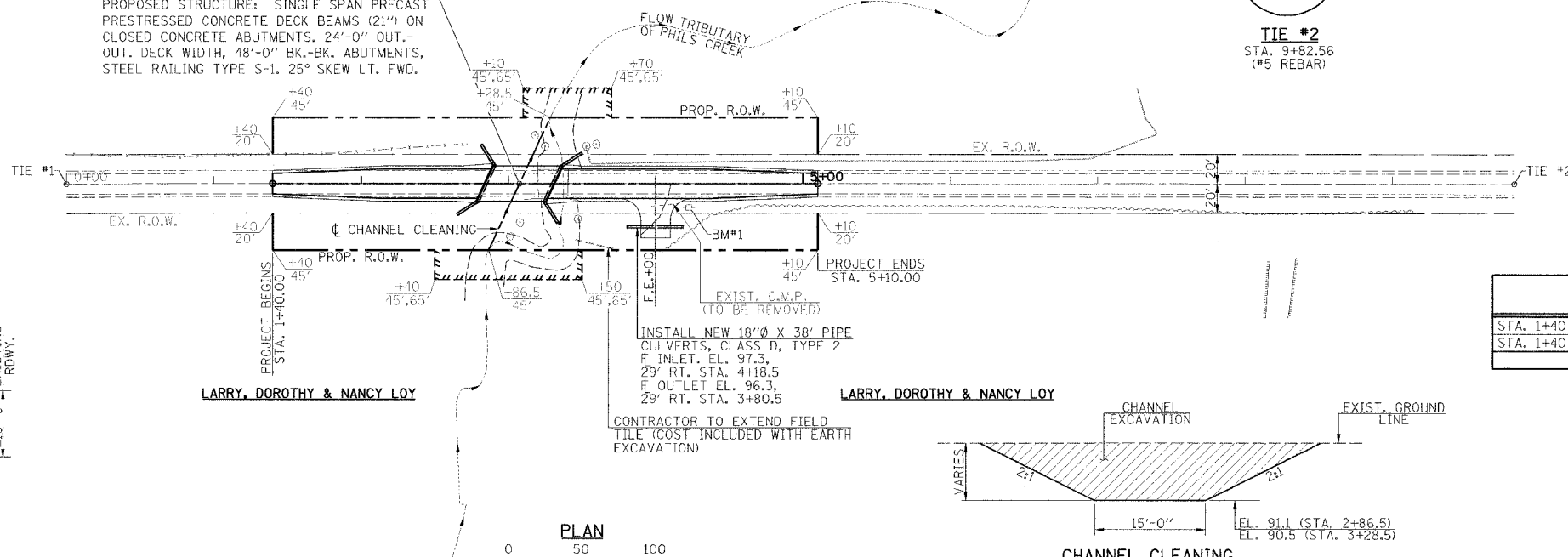


JOHN ARTHUR WATSON

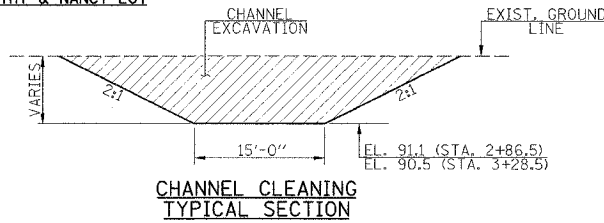
JAMES GORMAN



STA. 3+07.50 -  $\phi$  RDWY. AT  $\phi$  STRUCTURE  
PROPOSED STRUCTURE: SINGLE SPAN PRECAST  
PRESTRESSED CONCRETE DECK BEAMS (21") ON  
CLOSED CONCRETE ABUTMENTS, 24'-0" OUT-  
OUT. DECK WIDTH, 48'-0" BK.-BK. ABUTMENTS,  
STEEL RAILING TYPE S-1, 25° SKEW LT. FWD.



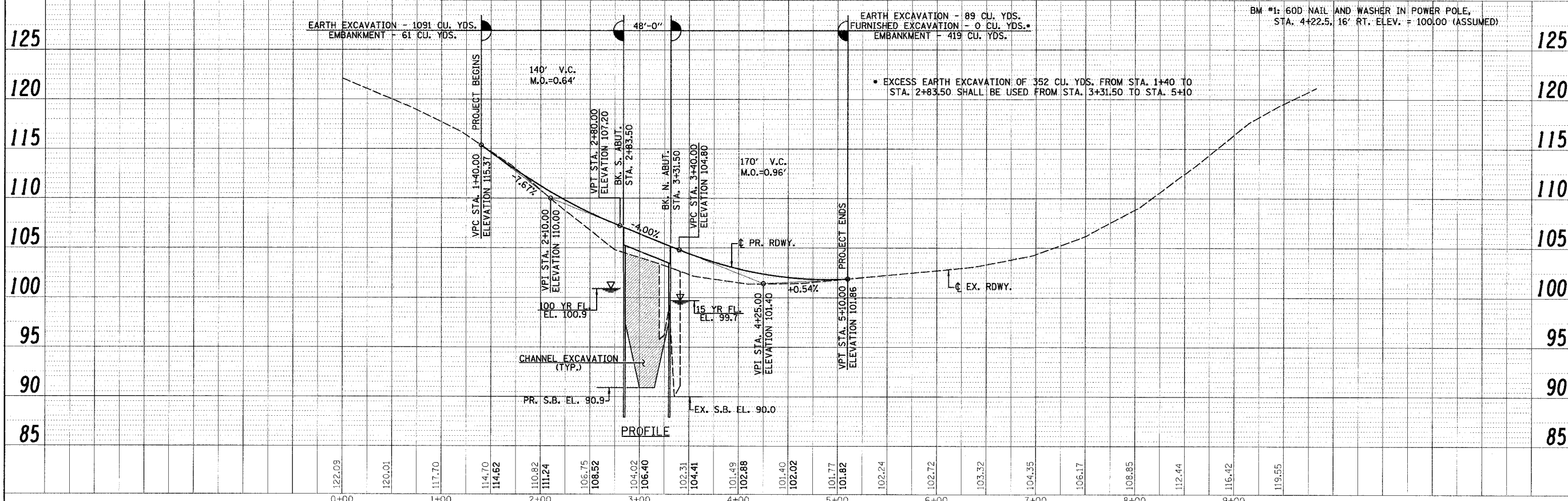
SEEDING CLASS 2 (SPECIAL) - STA. 1+40 TO STA. 5+10  
R.O.W. TO R.O.W. - 0.5 ACRE



SCHEDULE  
TREE REMOVAL, ACRES

LOCATION	QUANTITY (ACRE)
STA. 1+40 TO STA. 5+10 LT.	0.3
STA. 1+40 TO STA. 3+80 RT.	0.2
TOTAL	0.5

UTILITIES  
FRONTIER COMMUNICATIONS  
225 N. BROAD STREET  
CARLINVILLE, ILLINOIS 62626  
1-217-854-4013  
M.J.M. ELECTRIC COOPERATIVE, INC.  
P.O. BOX 80  
CARLINVILLE, ILLINOIS 62626  
1-217-854-3137  
JERSEY COUNTY RURAL WATER  
1009 E. SHIPMAN ROAD  
JERSEYVILLE, ILLINOIS  
1-618-498-9534

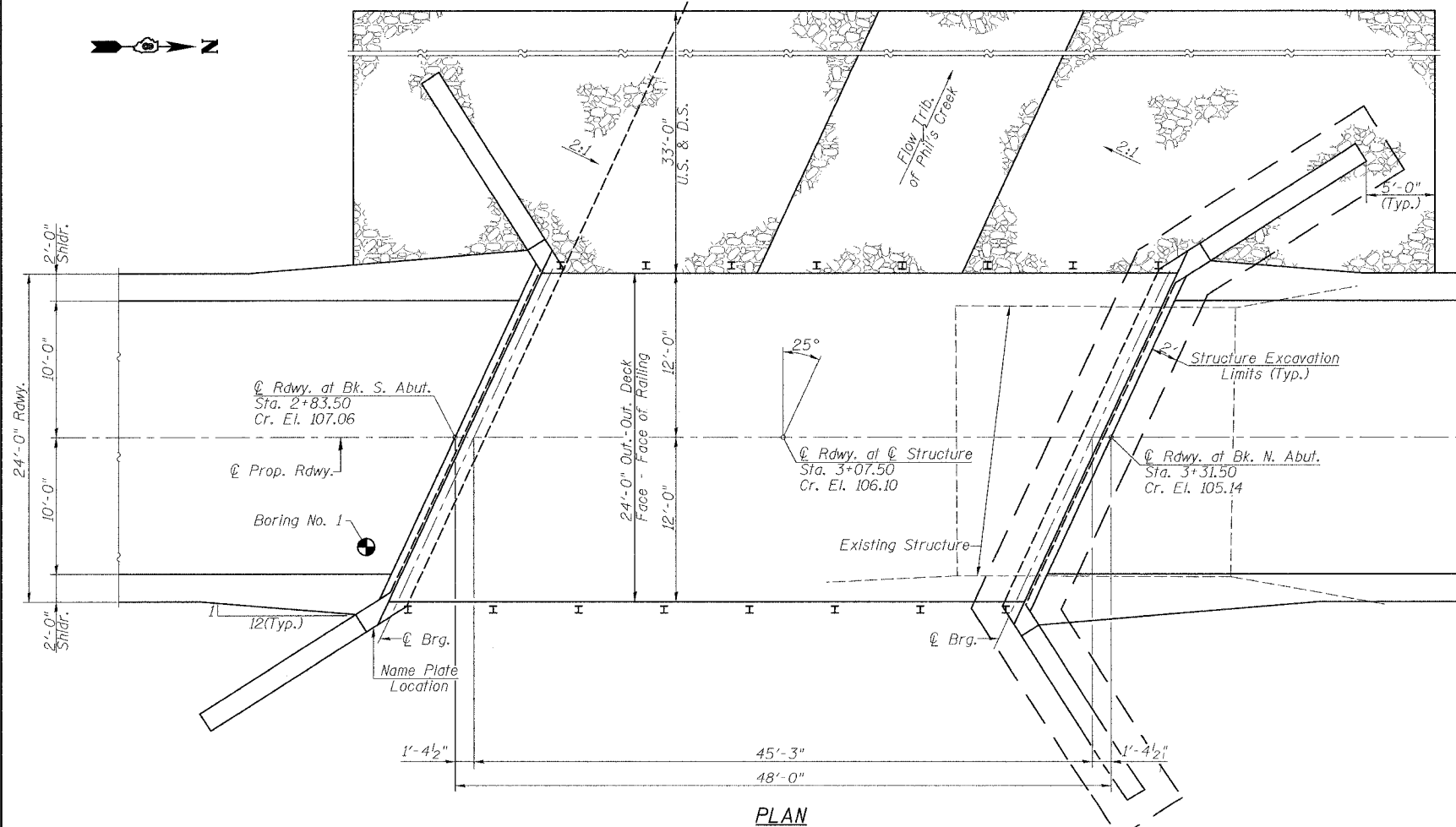
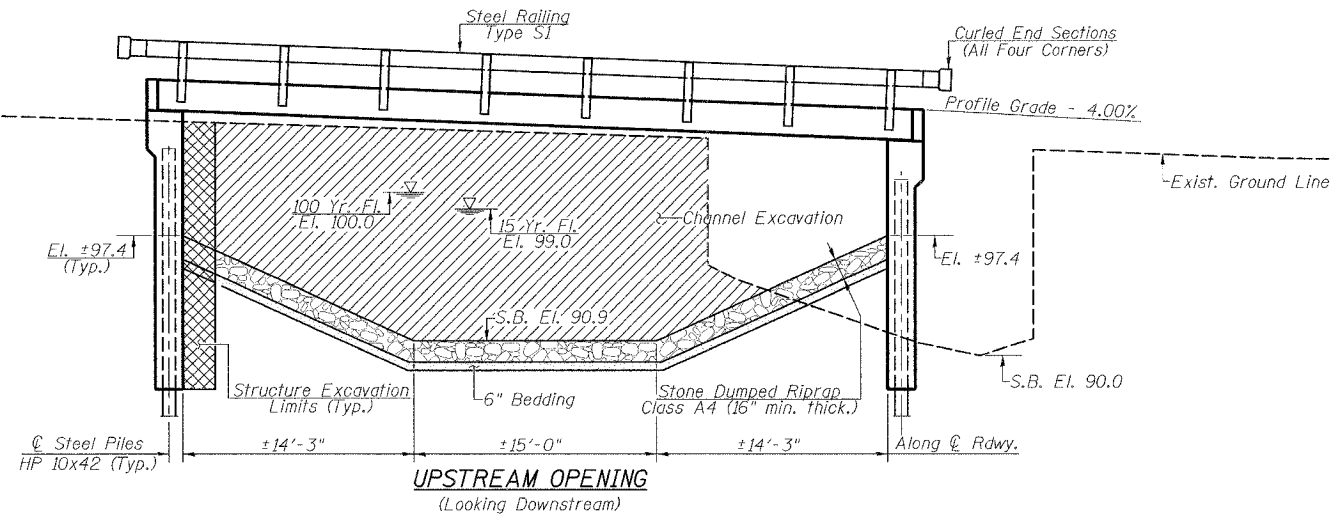


FILE NAME =	USER NAME = #USER#	DESIGNED -	REVISED -	<p>Allen Henderson &amp; Associates, Inc. Civil and Structural Engineers Springfield, IL 62703 Phone: (217)544-8033 IL Design Firm No. 184-001907</p>	<p>PLAN &amp; PROFILE</p> <p>SCALE: 1/4" = 10' H, 1/5" = 10' V SHEET NO. 3 OF 12 SHEETS STA. 1+40.00 TO STA. 5+10.00</p>	T.R. RTE.	SECTION	COUNTY	TOTAL SHEETS	SHEET NO.
#FILE.#	PLOT SCALE = #SCALE#	CHECKED -	REVISED -			50	05-03104-00-BR	JERSEY	12	3
	PLOT DATE = #DATE#	DRAWN -	REVISED -			CONTRACT NO. 97334				
		CHECKED -	REVISED -			FED. ROAD DIST. NO. ILLINOIS FED. AID PROJECT				

Existing Structure: Single span poured concrete deck bridge on steel stringers founded on closed concrete abutments. ±20'-0" Out.-Out. deck, ±20'-6" Bk.-Bk. abutments. Steel channel rail posts with no railing, 0° skew. Existing Structure No. 042-3049.

BM #1 - 60d Nail & Washer in Power Pole  
16' Rt. Sta. 4+22.5 El. 100.00 (Assumed)

T.R. RTE.	SECTION	COUNTY	TOTAL SHEETS	SHEET NO.
50	05-03104-00-BR	JERSEY	12	4
<b>CONTRACT NO. 97334</b>				
FED. ROAD DIST. NO. ILLINOIS FED. AID PROJECT				



**TOTAL BILL OF MATERIAL**

ITEM	UNIT	SUPER	SUB	TOTAL
Stone Dumped Riprap, Class A4	Ton			421
Filter Fabric	Sq. Yd.			632
Structure Excavation	Cu. Yd.			262
Concrete Structures	Cu. Yd.		104.4	104.4
Precast Prestressed Concrete Deck Beams (21" Depth)	Sq. Ft.	1117		1117
Reinforcement Bars	Pound		15260	15260
Steel Railing, Type S-1	Foot	96		96
Furnishing Steel Piles HP 10x42	Foot		696	696
Driving Piles	Foot		696	696
Test Pile, Steel HP 10x42	Each		2	2
Underwater Structure Excavation Protection - Location 1	Each		1	1
Underwater Structure Excavation Protection - Location 2	Each		1	1

**WATERWAY INFORMATION**

Drainage Area = 1.91Sq. Mi. Pr. Low Grade Elev. 101.82 Sta. 5+00

Flood	Freq. Yr.	Q C.F.S.	Opening Sq. Ft.		Natural H.W.E.	Head - ft.		Headwater El.	
			Exist.	Prop.		Exist.	Prop.	Exist.	Prop.
Design	15	908	162	284	99.7	1.1	0.0	100.8	99.7
Base	100	1507	241	359	100.9	2.5	0.5	103.4	101.4
Exist. Overtop.	30	1122							
Prop. Overtop.	40	1208							
Max. Calc.	500	2012	255	430	101.6	2.3	0.8	103.9	102.4

**DESIGN STRESSES**

**FIELD UNITS**

$f_c = 1400$  psi  
 $v_c = 56.2$  psi  
 $f_s = 24000$  psi  
 $n = 9$

**PRECAST PRESTRESSED UNITS**

$f'_c = 5000$  psi  
 $f'_{cl} = 4000$  psi  
 $f'_s = 270000$  psi  
 $f'_{sl} = 201960$  psi  
1/2" Strands

**GENERAL NOTES**

See Proposal for Boring Data.  
Reinforcement bars shall conform to the requirements of ASTM A706, Grade 60, (Illinois Modified) See Special Provision.  
The layout of the riprap slopewall may be varied to suit conditions in the field as determined by the Engineer.  
The contractor shall drive one test pile in a permanent location at each abutment as directed by the Engineer in the field prior to ordering the remainder of piles.

**DESIGN SPECIFICATIONS**

2002 AASHTO Standard Specifications.

**LOADING HS 20-44**

Allow 50#/sq. ft. for future wearing surface.

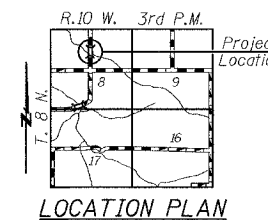
TRIBUTARY OF PHILS CREEK  
BUILT 200 BY  
JERSEY COUNTY  
SECTION 05-03104-00-BR  
STA. 3+07.50  
STR. NO. 042-3144 LOADING HS 20

**NAME PLATE**

(Standard 515001)

I certify that to the best of my knowledge, information and belief, this bridge design is structurally adequate for the design loading shown on the plans. The design is an economical one for the style of structure and complies with requirements of the current "A.A.S.H.T.O. Standard Specifications For Highway Bridges".

M. A. Henderson 2/19/08  
Expiration Date 11/30/2008



**GENERAL PLAN & ELEVATION**

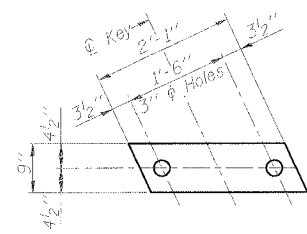
SCALE: 3/16" = 1' SHEET NO. 4 OF 12 SHEETS STA. 1+40.00 TO STA. 5+10.00

T.R. RTE.	SECTION	COUNTY	TOTAL SHEETS	SHEET NO.
50	05-03104-00-BR	JERSEY	12	4
<b>CONTRACT NO. 97334</b>				
FED. ROAD DIST. NO. ILLINOIS FED. AID PROJECT				

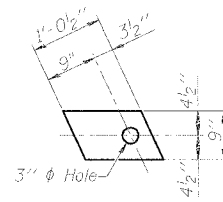
FILE NAME: #FILE.#	USER NAME: #USER#	DESIGNED: -	REVISED: -
		DRAWN: -	REVISED: -
	PLT1 SCALE: #SCALE#	CHECKED: -	REVISED: -
	PLOT DATE: #DATE#	DATE: -	REVISED: -

**Allen Henderson & Associates, Inc.**  
Civil and Structural Engineers Springfield, IL.  
62703 Phone: (217)544-8033 IL. Design Firm  
No. 184-001907

T.R. RTE.	SECTION	COUNTY	TOTAL SHEETS	SHEET NO.
50	05-03104-00-BR	JERSEY	12	5
CONTRACT NO. 97334				
FED. ROAD DIST. NO. ILLINOIS FED. AID PROJECT				

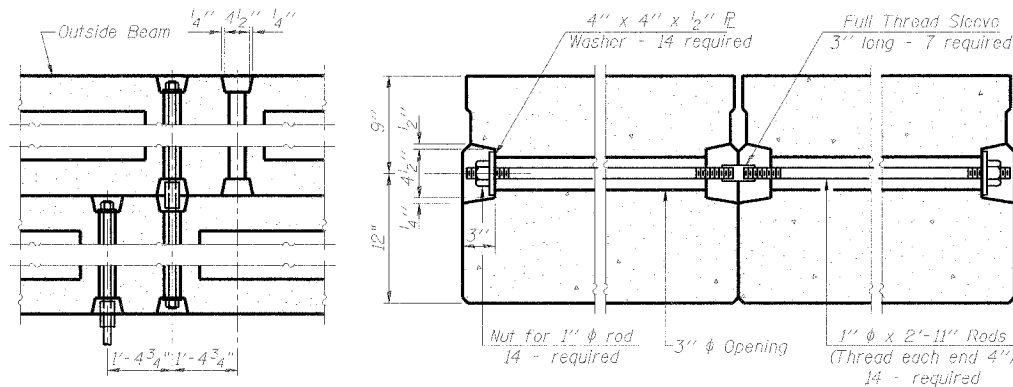


**FABRIC BEARING PAD**  
(Interior)  
(12 Required)

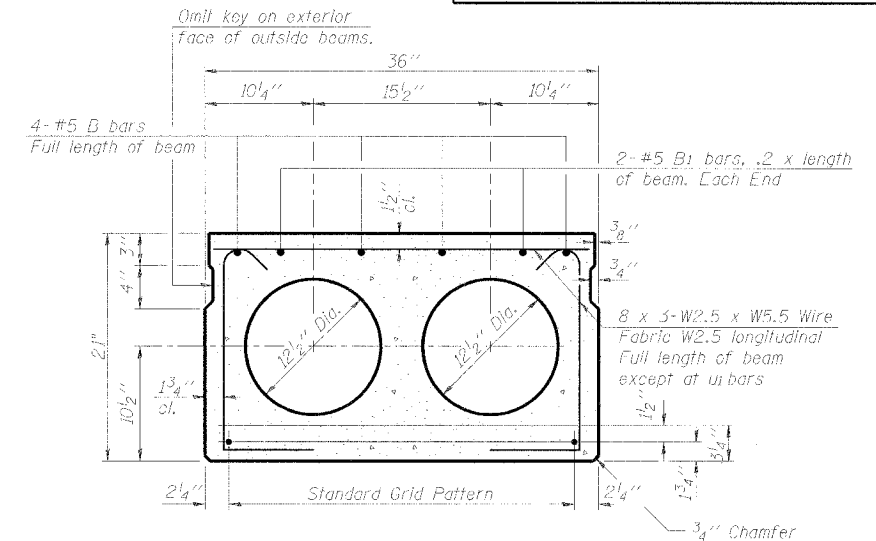


**FABRIC BEARING PAD**  
(Exterior)  
(8 Required)

**FIXED**



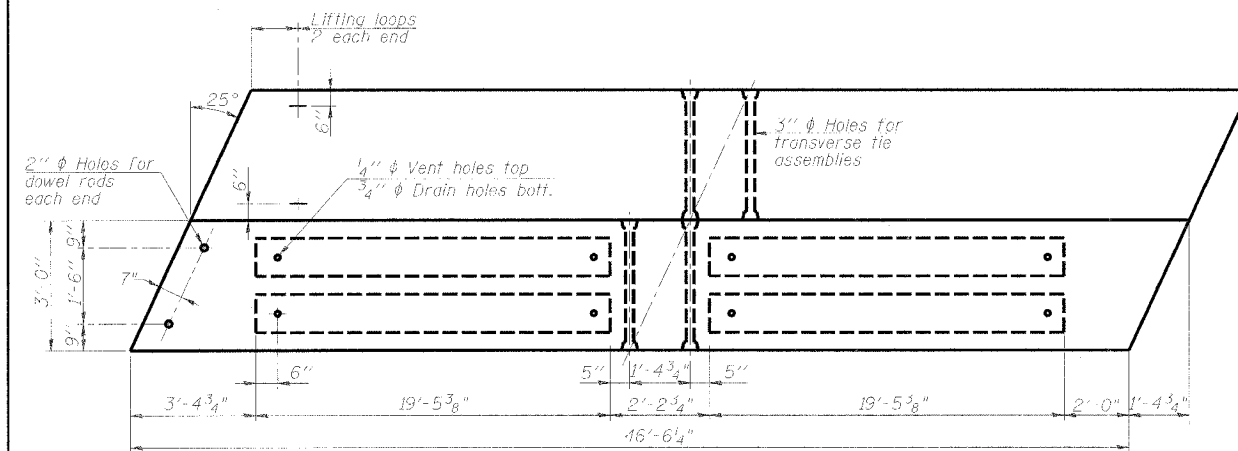
**TYPICAL TRANSVERSE TIE ASSEMBLY**



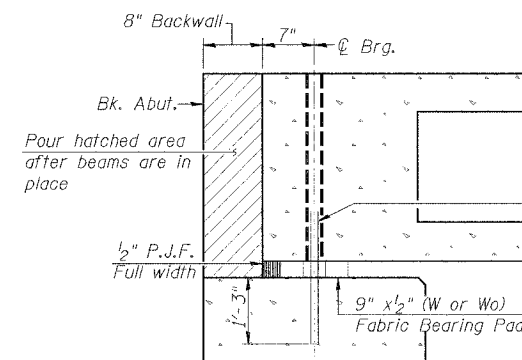
**TYPICAL SECTION**

14-1/2"  $\phi$  Strands, Each Strand Stressed to 30,900 Lbs.  
8 Strands 1 3/4" up, 4 Strands 3/4" up, 2 Strands 9" up

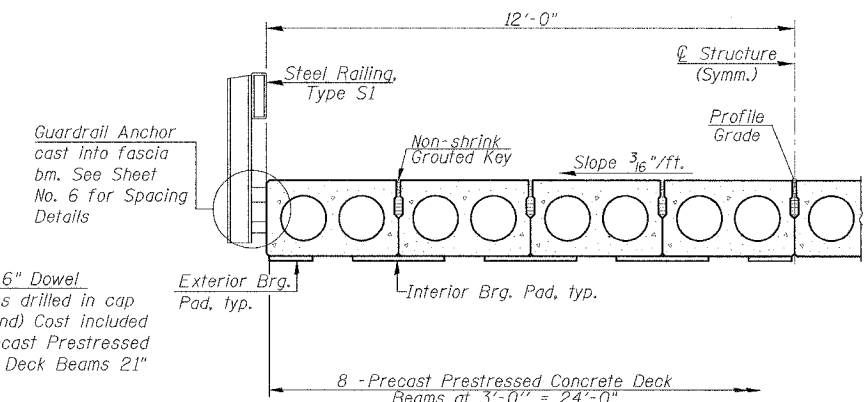
Note:  
Place strands symmetrically about  $\phi$  of beam.



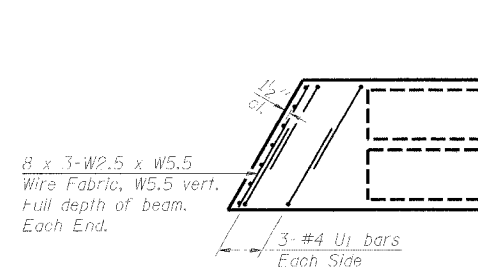
**PLAN**



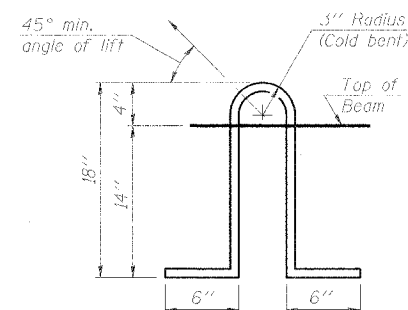
**SECTION THRU ABUTMENT**  
(At Right Angles)



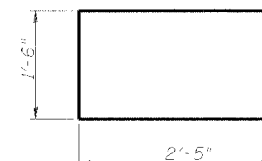
**HALF CROSS SECTION**



**END PLAN**



**LIFTING LOOP DETAIL**



**BAR U1**

**NOTES**

Prestressing steel shall be uncoated high strength, low relaxation 7-wire strand, Grade 270. The nominal diameter shall be 1/2" and the nominal cross-sectional area shall be 0.153 sq. in. Lifting loops shall be 2-1/2"  $\phi$  270 ksi strands, as shown. The 1"  $\phi$  rods in the transverse tie assembly shall be tightened to a snug fit and the threads set. Pockets that receive transverse tie bar on outside shall be filled with grout after transverse tie assembly is in place. Non prestressing steel shall conform to ASTM A 706 (IL MOD), Grade 60. The bearing seat surfaces shall be adjusted by shimming to assure firm and even bearing. Two 1/8" fabric adjusting shims of the dimensions of the Exterior Bearing Pad shall be provided for each bearing. Keyway surfaces shall be cleaned to remove form oil or other bond breaking material prior to shipment of the beams. Cleaning shall be done by sandblasting the keyway areas between top of the beam and the bottom edge of the key. Corrosion Inhibitor, per Article 1020.05(b)(12) of the Standard Specifications, shall be used in the concrete for precast prestressed concrete deck beams. Required Release Strength, f'ci, shall be 4000 p.s.i.

**BILL OF MATERIAL**

Precast Prestressed Conc. Deck Bms. (21" Depth)	Sq. Ft.	1117

PD-3-L

11-1-06

FULL NAME	USER NAME	DESIGNED	REVISED
#FILE#	#USER#	DRAWN	REVISED
		CHECKED	REVISED
		DATE	REVISED

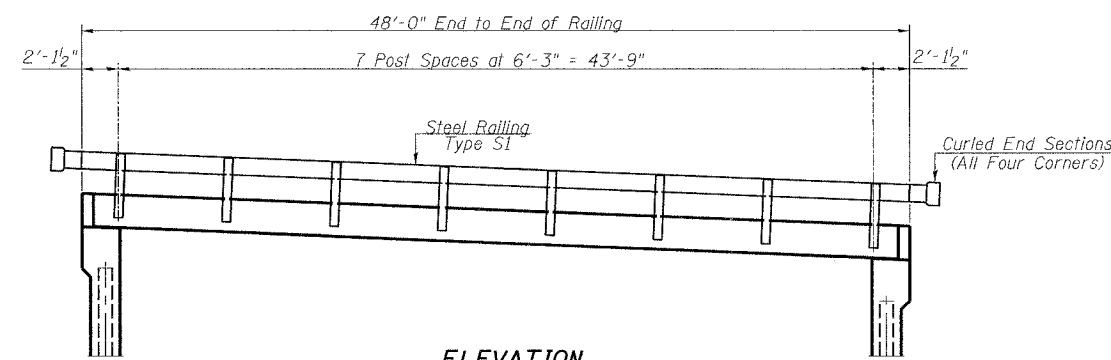


**Allen Henderson & Associates, Inc.**  
Civil and Structural Engineers Springfield, IL  
62703 Phone: (217)544-8033 IL Design Firm  
No. 184-001907

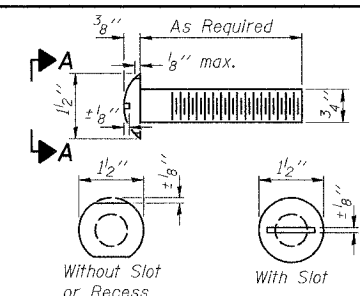
<b>SUPERSTRUCTURE</b>		
SCALE: VARIES	SHEET NO. 5 OF 12 SHEETS	STA. 1+40.00 TO STA. 5+10.00

T.R. RTE.	SECTION	COUNTY	TOTAL SHEETS	SHEET NO.
50	05-03104-00-BR	JERSEY	12	5
CONTRACT NO. 97334				
FED. ROAD DIST. NO. ILLINOIS FED. AID PROJECT				

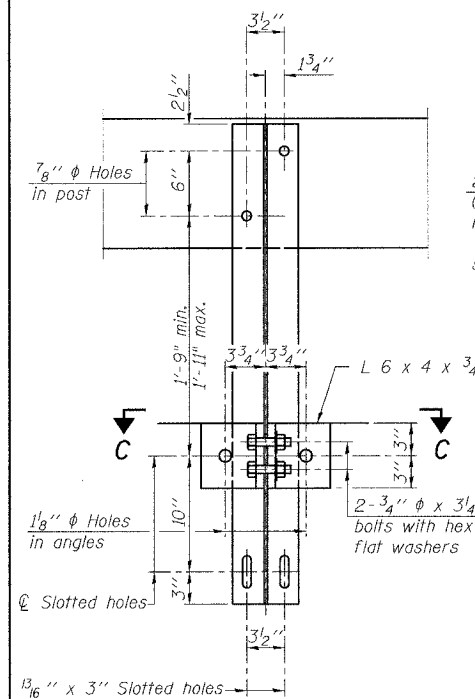
T.R. RTE.	SECTION	COUNTY	TOTAL SHEETS	SHEET NO.
50	05-03104-00-BR	JERSEY	12	6
<b>CONTRACT NO. 97334</b>				
FED. ROAD DIST. NO. - ILLINOIS FED. AID PROJECT				



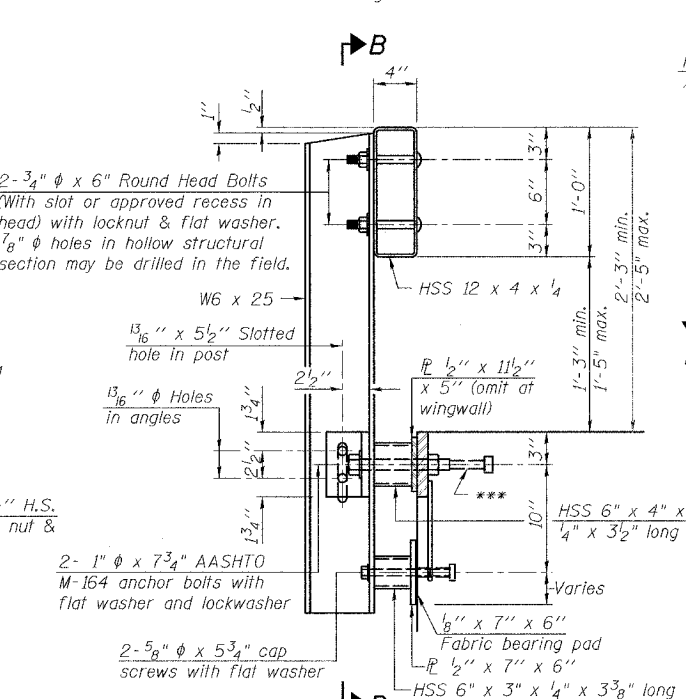
**ELEVATION**  
(Showing Outside Face)



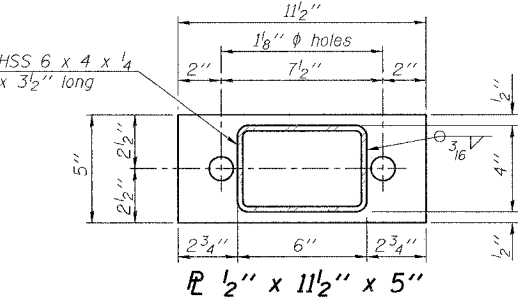
**VIEW A-A**  
**ROUND HEAD BOLT**



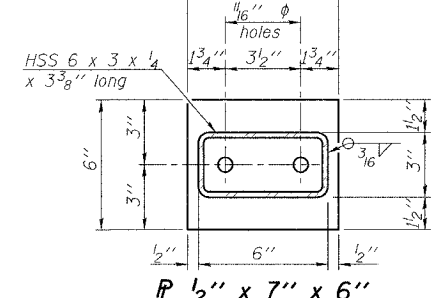
**SECTION B-B**



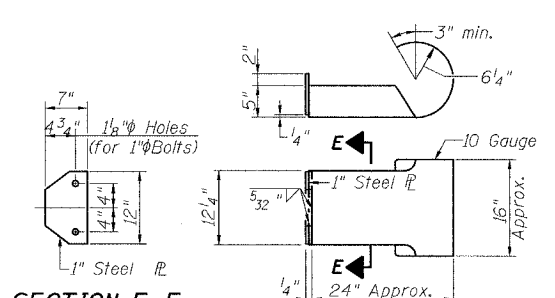
**SECTION AT RAILING POST**



**ANCHOR DEVICE**

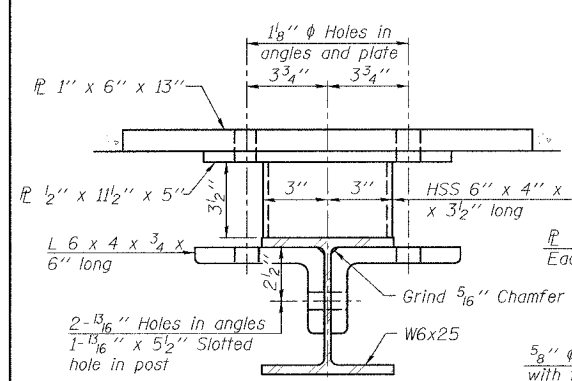


**ANCHOR DEVICE**

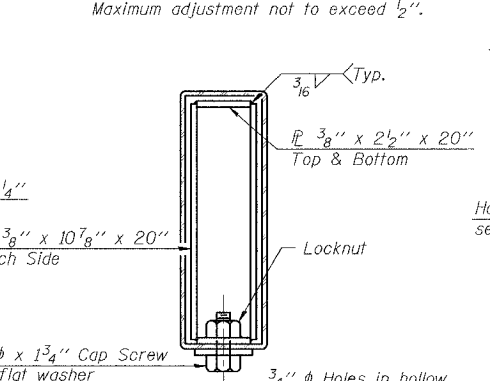


**SECTION E-E**  
**CURLED END SECTION DETAILS (4 Required)**

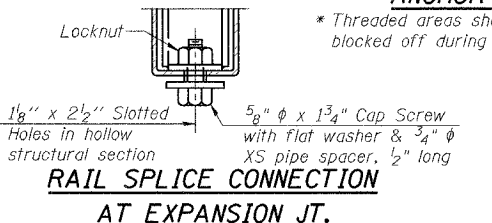
**Notes:**  
All field drilled holes shall be coated with an approved zinc rich paint before erection.  
All steel rail elements shall be galvanized according to Article 509.05 of the Standard Specifications.  
\*\*\* The studs of the anchor devices shall be placed below the top reinforcement bars and the outermost longitudinal reinforcement bar shall be placed directly above the studs of the rail post anchor device.  
Railing shall be in accordance with Section 509 of the Standard Specifications, except as noted, and will be paid for at the contract unit price per foot for Steel Railing, Type S-1.  
The cost of curled end sections shall be included in the cost of Steel Railing, Type S1.



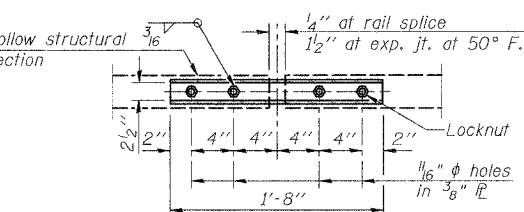
**SECTION C-C**



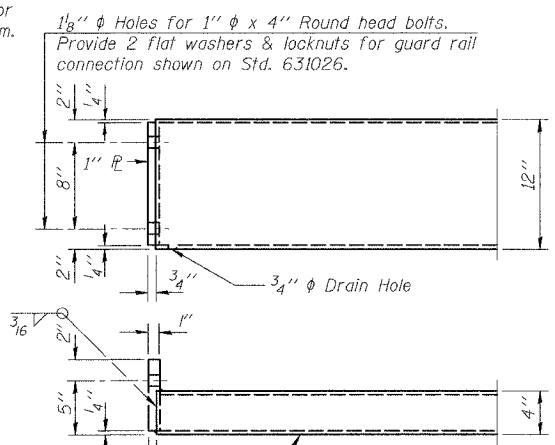
**SECTIONS AT RAIL SPLICE**



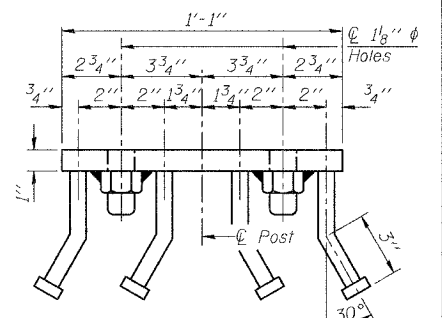
**RAIL SPLICE CONNECTION AT EXPANSION JT.**



**PLAN-BOTT. SPLICE TYPICAL**



**END OF RAIL DETAILS**



**VIEW D-D**  
**BILL OF MATERIAL**

Item	Unit	Quantity
Steel Railing, Type S1	Foot	96

FILE NAME =	USER NAME = #USER#	DESIGNED -	REVISED -
#FILE#		DRAWN -	REVISED -
	PLOT SCALE = #SCALE#	CHECKED -	REVISED -
	PLOT DATE = #DATE#	DATE -	REVISED -

**Allen Henderson & Associates, Inc.**  
Civil and Structural Engineers Springfield, IL.  
62703 Phone: (217)544-8033 IL Design Firm  
No. 184-001907

**RAILING**  
SCALE: VARIES SHEET NO. 6 OF 12 SHEETS STA. 1+40.00 TO STA. 5+10.00

T.R. RTE.	SECTION	COUNTY	TOTAL SHEETS	SHEET NO.
50	05-03104-00-BR	JERSEY	12	6
<b>CONTRACT NO. 97334</b>				
FED. ROAD DIST. NO. - ILLINOIS FED. AID PROJECT				





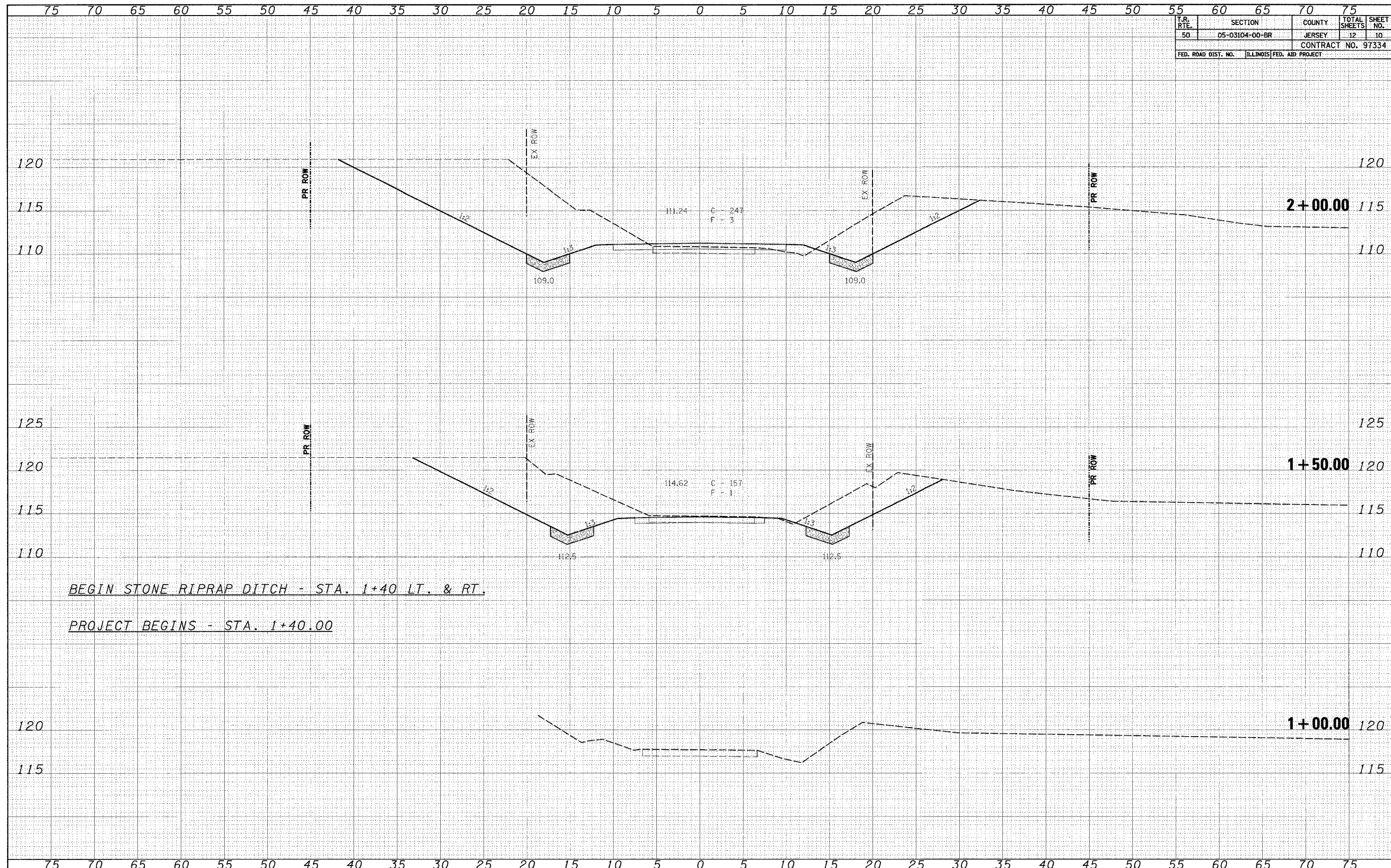





F.A. RTE.	SECTION	COUNTY	TOTAL SHEETS	SHEET NO.
50	05-03104-00-BR	JERSEY	12	10
FED. ROAD DIST. NO. ILLINOIS FED. AID PROJECT			CONTRACT NO. 97334	

DATE	BY
DATE	BY
DATE	BY
DATE	BY
DATE	BY

DATE	BY
DATE	BY
DATE	BY
DATE	BY
DATE	BY



BEGIN STONE RIPRAP DITCH - STA. 1+40 LT. & RT.  
 PROJECT BEGINS - STA. 1+40.00

FILE NAME -	USER NAME - \$USER*	DESIGNED -	REVISED -	 <b>Allen Henderson &amp; Associates, Inc.</b> Civil and Structural Engineers Springfield, IL. 62703 Phone: (217)544-8033 IL. Design Firm No. 184-001907	F.A. RTE.	SECTION	COUNTY	TOTAL SHEETS	SHEET NO.
\$FILEL#		DRAWN -	REVISED -		50	05-03104-00-BR	JERSEY	12	10
		CHECKED -	REVISED -		CONTRACT NO.				
		DATE -	REVISED -		FED. ROAD DIST. NO. ILLINOIS FED. AID PROJECT				

**CROSS SECTIONS**

SCALE: SHEET NO. OF SHEETS STA. 1+00.00 TO STA. 2+00.00



