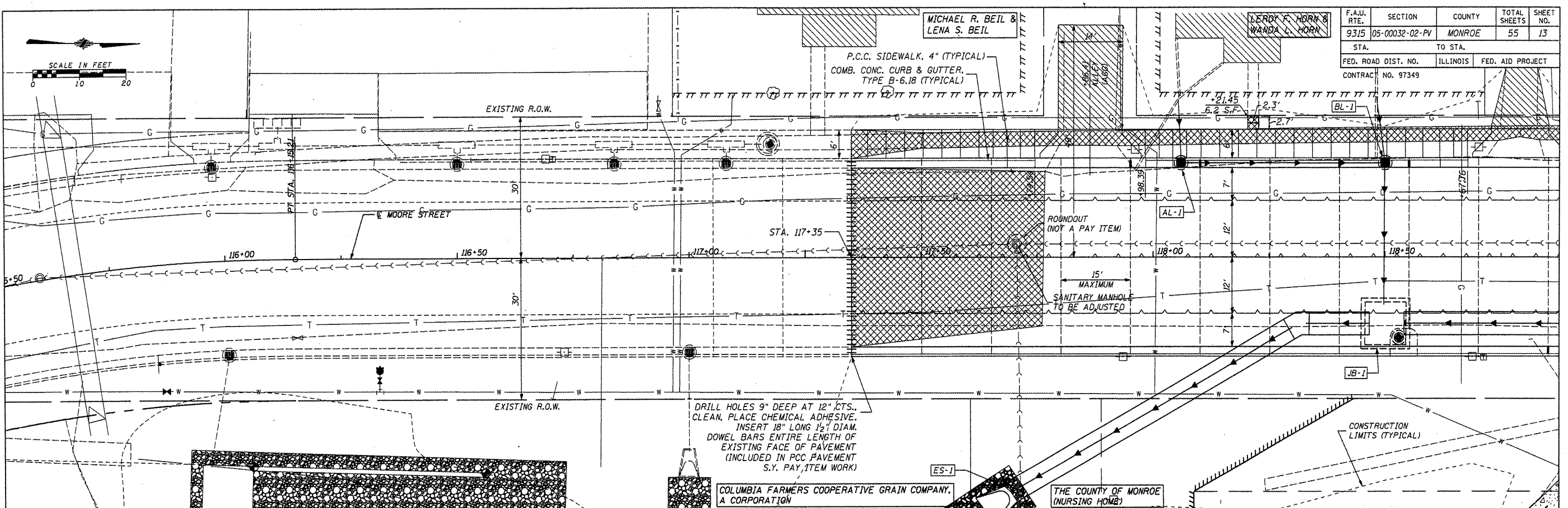
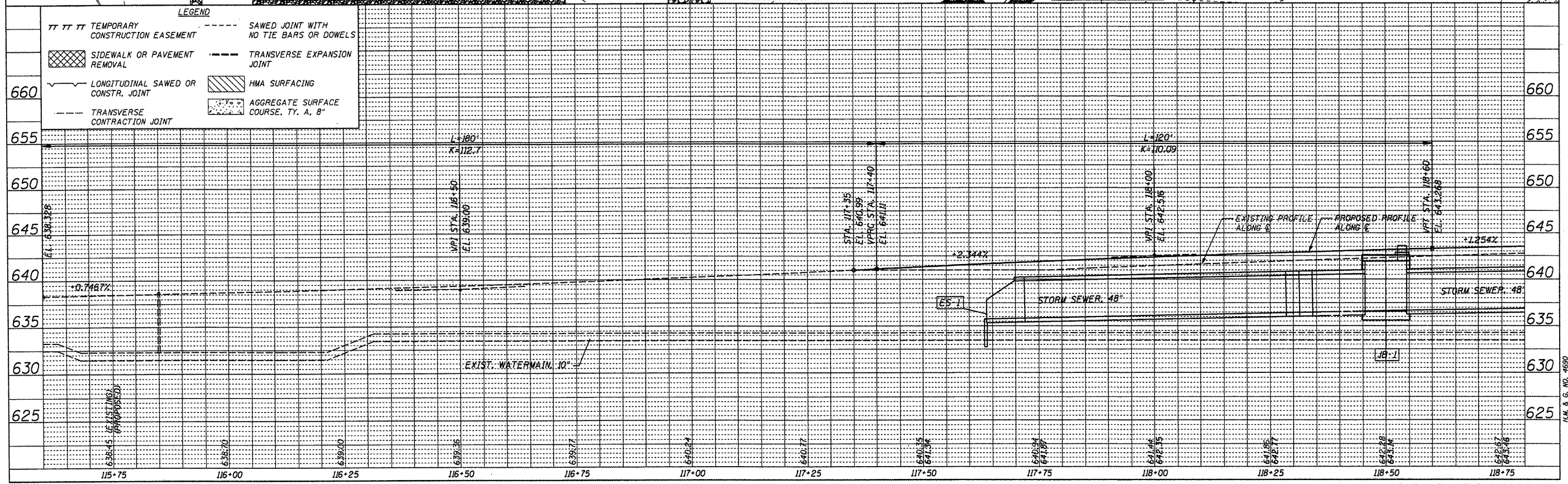


F.A.U. RTE.	SECTION	COUNTY	TOTAL SHEETS	SHEET NO.
9315	05-00032-02-PV	MONROE	55	13
STA.	TO STA.			
FED. ROAD DIST. NO.	ILLINOIS	FED. AID PROJECT		
CONTRACT NO.	97349			



**LEGEND**

TT TT TT	TEMPORARY CONSTRUCTION EASEMENT	---	SAWED JOINT WITH NO TIE BARS OR DOWELS
[Cross-hatched]	SIDEWALK OR PAVEMENT REMOVAL	---	TRANSVERSE EXPANSION JOINT
---	LONGITUDINAL SAWED OR CONSTR. JOINT	[Diagonal lines]	HMA SURFACING
---	TRANSVERSE CONTRACTION JOINT	[Stippled]	AGGREGATE SURFACE COURSE, T.Y. A, 8"



**PLAN**

DATE: \_\_\_\_\_ BY: \_\_\_\_\_

REVISIONS:

NO.	DESCRIPTION

**PROFILE**

DATE: \_\_\_\_\_ BY: \_\_\_\_\_

REVISIONS:

NO.	DESCRIPTION

CADD FILE: /5881/5881-pd1.dwg  
 PLOTTED: 8/24/15