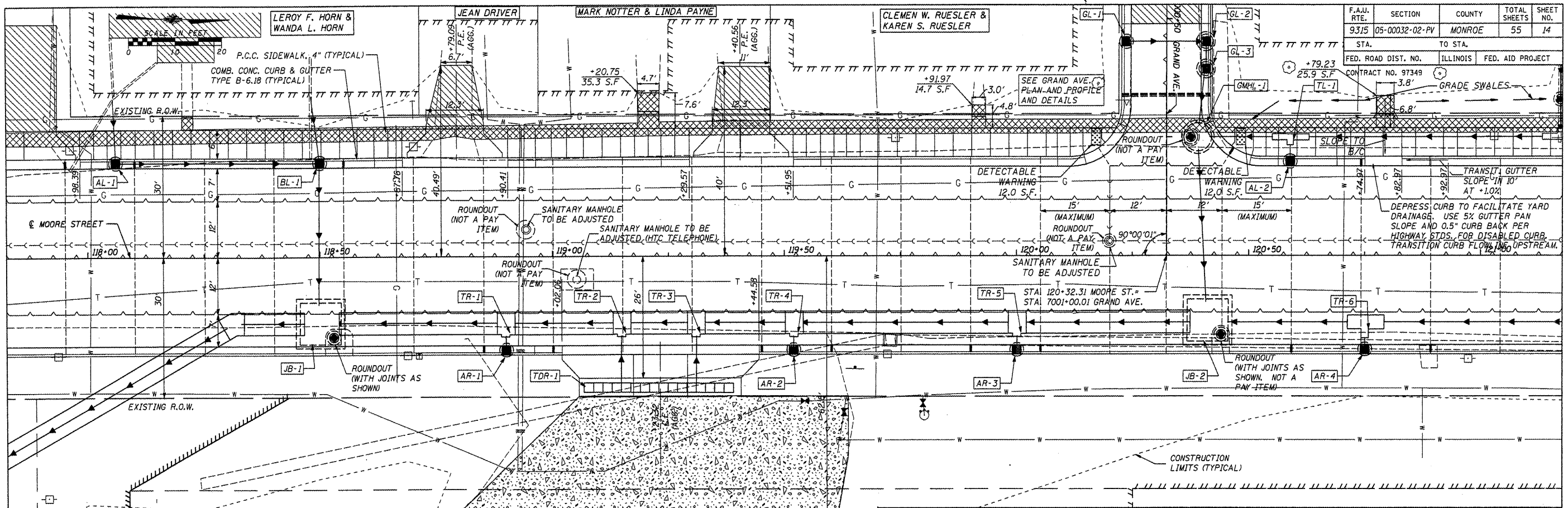


F.A.J. RTE.	SECTION	COUNTY	TOTAL SHEETS	SHEET NO.
9315	05-00032-02-PV	MONROE	55	14
STA.	TO STA.			
FED. ROAD DIST. NO.	ILLINOIS	FED. AID PROJECT		
CONTRACT NO. 97349	3.8'		GRADE SWALES	

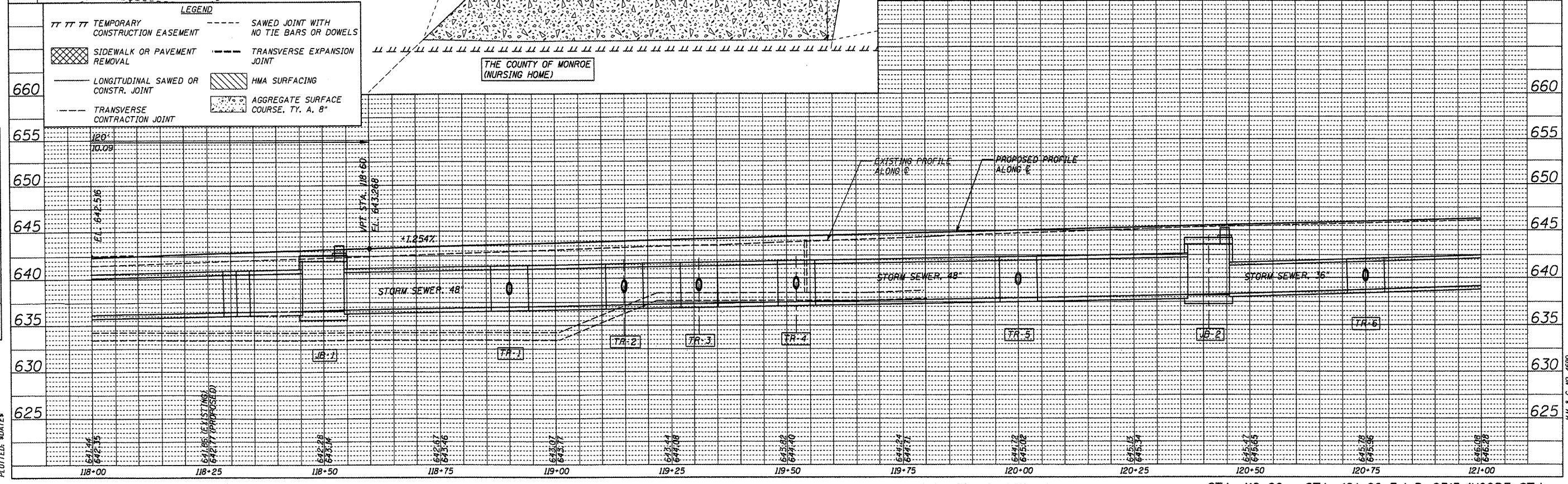


DATE: _____
 BY: _____
 CHECKED: _____
 NO. _____

DATE: _____
 BY: _____
 CHECKED: _____
 NO. _____

LEGEND

TT TT TT	TEMPORARY CONSTRUCTION EASEMENT	---	SAWED JOINT WITH NO TIE BARS OR DOWELS
[Cross-hatched]	SIDEWALK OR PAVEMENT REMOVAL	---	TRANSVERSE EXPANSION JOINT
---	LONGITUDINAL SAWED OR CONSTR. JOINT	[Diagonal lines]	HMA SURFACING
---	TRANSVERSE CONTRACTION JOINT	[Stippled]	AGGREGATE SURFACE COURSE, TY. A, 8"



HENRY, MEISENHEIMER & GENDE, INC. 1075 LAKE ROAD CARLYLE, ILLINOIS 62231 (618) 594-3711 STA. 118+00 - STA. 121+00 F.A.P. 9315 (MOORE ST.)

I.L.M. & G. NO. 4650