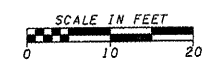
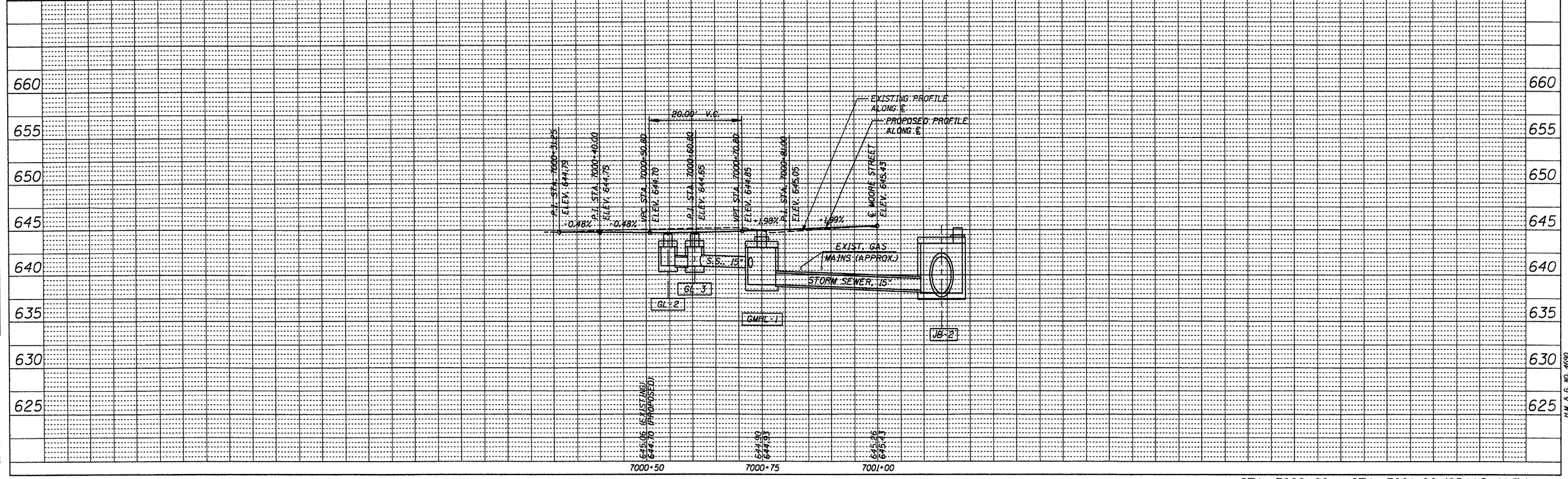
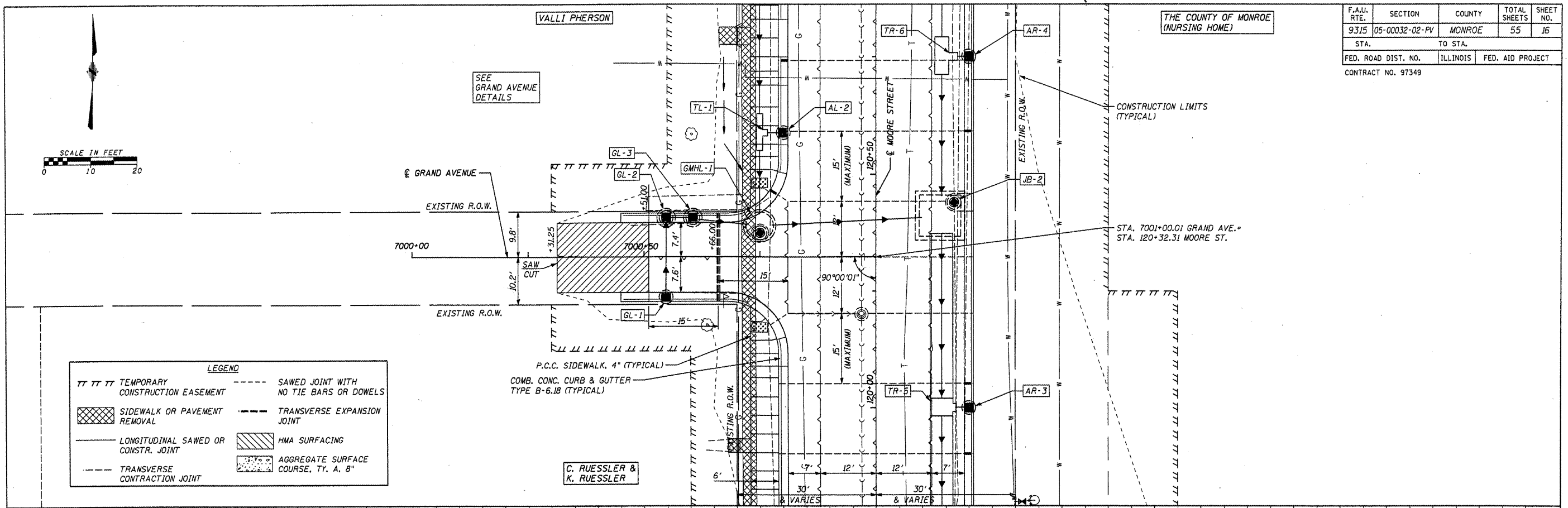


F.A.J. RTE.	SECTION	COUNTY	TOTAL SHEETS	SHEET NO.
9315	05-00032-02-PV	MONROE	55	16
STA.		TO STA.		
FED. ROAD DIST. NO.		ILLINOIS	FED. AID PROJECT	
CONTRACT NO. 97349				



**LEGEND**

TT TT TT	TEMPORARY CONSTRUCTION EASEMENT	---	SAWED JOINT WITH NO TIE BARS OR DOWELS
[Cross-hatched]	SIDEWALK OR PAVEMENT REMOVAL	---	TRANSVERSE EXPANSION JOINT
---	LONGITUDINAL SAWED OR CONSTR. JOINT	[Diagonal lines]	HMA SURFACING
---	TRANSVERSE CONTRACTION JOINT	[Stippled]	AGGREGATE SURFACE COURSE, T.Y. A, B"



**PLAN**

DATE	
BY	
DESIGNED BY	
CHECKED BY	
IN CHARGE	
NO.	

**PROFILE**

DATE	
BY	
DESIGNED BY	
CHECKED BY	
IN CHARGE	
NO.	

CADD FILE: /SBB/588/588-04-89  
PLOTTED: 8/24/89

P.M. & G. MO. 4690