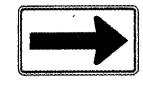
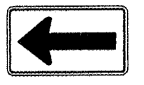
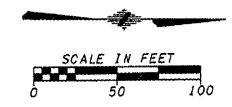
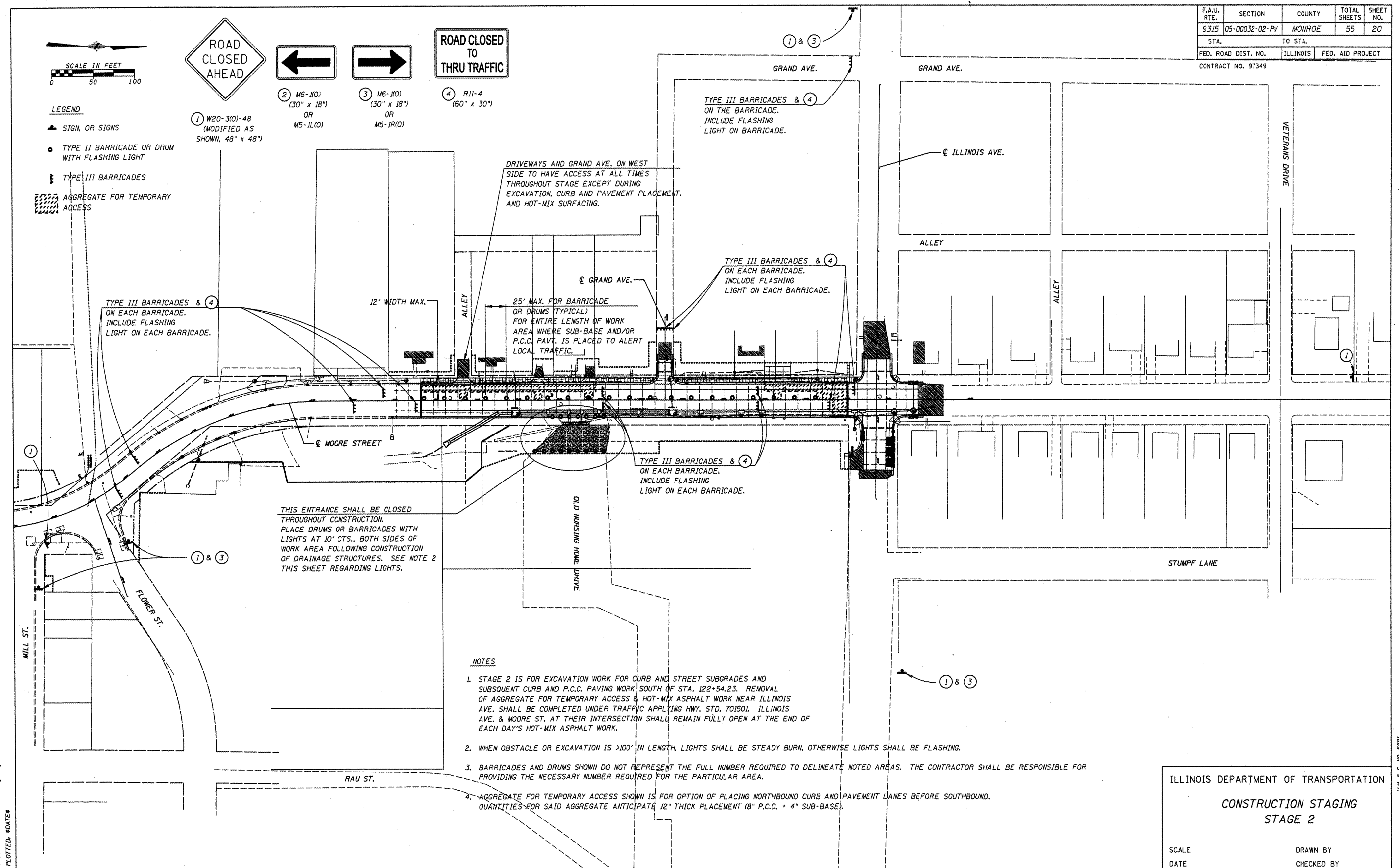


F.A.U. RTE.	SECTION	COUNTY	TOTAL SHEETS	SHEET NO.
9315	05-00032-02-PV	MONROE	55	20
STA.		TO STA.		
FED. ROAD DIST. NO.		ILLINOIS	FED. AID PROJECT	
CONTRACT NO. 97349				



- LEGEND**
- ▲ SIGN, OR SIGNS
 - TYPE II BARRICADE OR DRUM WITH FLASHING LIGHT
 - ▬ TYPE III BARRICADES
 - ▨ AGGREGATE FOR TEMPORARY ACCESS

- ① W20-310)-48 (MODIFIED AS SHOWN, 48" x 48")
- ② M6-110) (30" x 18") OR M5-110)
- ③ M6-110) (30" x 18") OR M5-110)
- ④ R11-4 (60" x 30")



NOTES

1. STAGE 2 IS FOR EXCAVATION WORK FOR CURB AND STREET SUBGRADES AND SUBSEQUENT CURB AND P.C.C. PAVING WORK SOUTH OF STA. 122+54.23. REMOVAL OF AGGREGATE FOR TEMPORARY ACCESS & HOT-MIX ASPHALT WORK NEAR ILLINOIS AVE. SHALL BE COMPLETED UNDER TRAFFIC APPLYING HWY. STD. 701501. ILLINOIS AVE. & MOORE ST. AT THEIR INTERSECTION SHALL REMAIN FULLY OPEN AT THE END OF EACH DAY'S HOT-MIX ASPHALT WORK.
2. WHEN OBSTACLE OR EXCAVATION IS >100' IN LENGTH, LIGHTS SHALL BE STEADY BURN, OTHERWISE LIGHTS SHALL BE FLASHING.
3. BARRICADES AND DRUMS SHOWN DO NOT REPRESENT THE FULL NUMBER REQUIRED TO DELINEATE NOTED AREAS. THE CONTRACTOR SHALL BE RESPONSIBLE FOR PROVIDING THE NECESSARY NUMBER REQUIRED FOR THE PARTICULAR AREA.
4. AGGREGATE FOR TEMPORARY ACCESS SHOWN IS FOR OPTION OF PLACING NORTHBOUND CURB AND PAVEMENT LANES BEFORE SOUTHBOUND. QUANTITIES FOR SAID AGGREGATE ANTICIPATE 12" THICK PLACEMENT (8" P.C.C. + 4" SUB-BASE).

ILLINOIS DEPARTMENT OF TRANSPORTATION
CONSTRUCTION STAGING
STAGE 2

SCALE _____ DRAWN BY _____
 DATE _____ CHECKED BY _____

CADD FILE: /5881/5881-51092.dgn
 PLOTTED: 8/1/15

H.M. & G. NO. 5881