

SEC. 10, T9S, R6E, 3RD P.M.

SN 083-0041 STA 1649+25.00
SINGLE SPAN PPC DECK BEAM
53'-5 3/4" BK TO BK CLOSED ABUTMENTS

MATCHLINE STATION 44+00

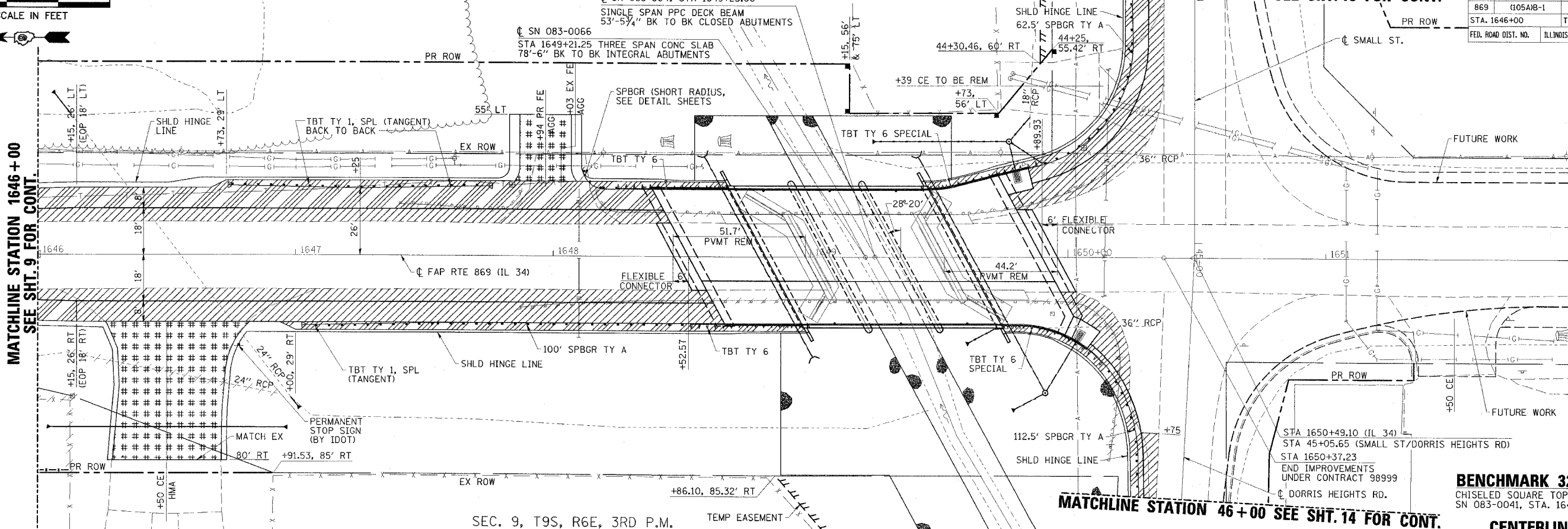
SEE SHT. 13 FOR CONT.

CONTRACT NO. 98999			
FAP RTE	SECTION	COUNTY	TOTAL SHEETS
869	105A/B-1	SALINE	71
STA. 1646+00		TO STA. 1652+00	
FED. ROAD DIST. NO.		ILLINOIS FED. AID PROJECT	

PLAN	DATE
BY	
REVISIONS	
NO.	
DATE	
DESCRIPTION	
BY	
DATE	

MATCHLINE STATION 1646+00
SEE SHT. 9 FOR CONT.

MATCHLINE STATION 1652+00
SEE SHT. 11 FOR CONT.



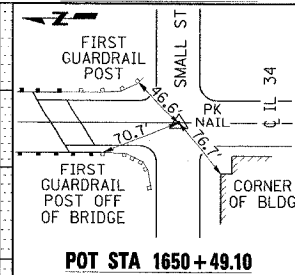
SEC. 9, T9S, R6E, 3RD P.M.

TEMP EASEMENT

MATCHLINE STATION 46+00 SEE SHT. 14 FOR CONT.

BENCHMARK 322 EL 363.99
CHISELED SQUARE TOP SE WINGWALL OF
SN 083-0041, STA. 1649+45

CENTERLINE TIE



PROFILE	DATE
BY	
REVISIONS	
NO.	
DATE	
DESCRIPTION	
BY	
DATE	

