

PLAN	DRAWN BY	DATE
NOTED BY	DATE	
CHECKED BY	DATE	
APPROVED BY	DATE	

PROFILE	DRAWN BY	DATE
NOTED BY	DATE	
CHECKED BY	DATE	
APPROVED BY	DATE	

PLOT DATE = 04/27/08  
 FILE NAME = 080427.DWG  
 PLOT SCALE = 1"=40'  
 REFERENCE = 080427

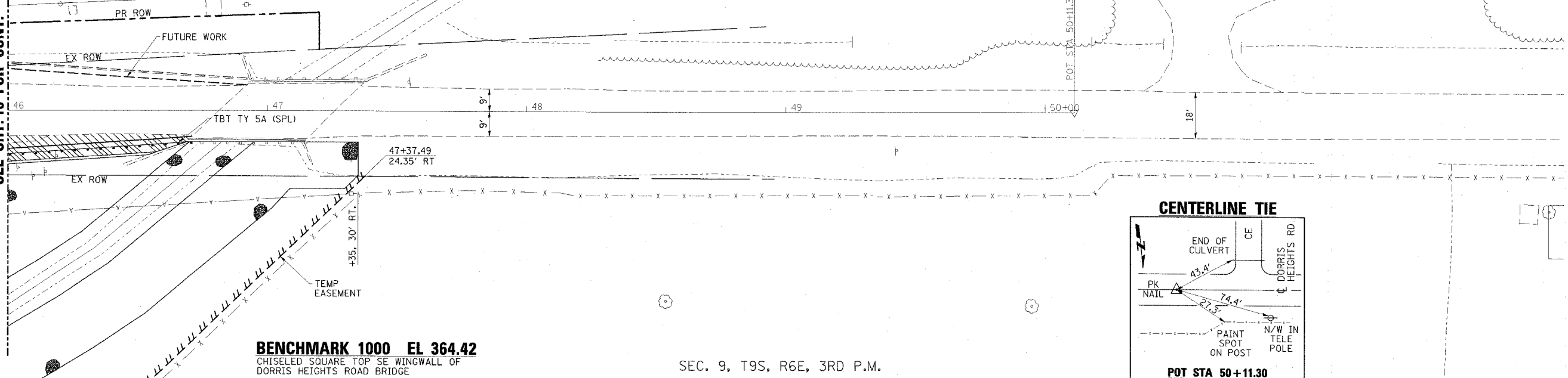
CONTRACT NO. 98999

FAP RTE	SECTION	COUNTY	TOTAL SHEETS	SHEET NO.
869	(105A)B-1	SALINE	71	14
STA. 46+00		TO STA. 52+00		
FED. ROAD DIST. NO.	ILLINOIS	FED. AID PROJECT		

SEC. 9, T9S, R6E, 3RD P.M.

CIPS POWER SUB-STATION

MATCH LINE STATION 46+00  
 SEE SHT. 10 FOR CONT.



**BENCHMARK 1000 EL 364.42**  
 CHISELED SQUARE TOP SE WINGWALL OF  
 DORRIS HEIGHTS ROAD BRIDGE

SEC. 9, T9S, R6E, 3RD P.M.

**CENTERLINE TIE**

