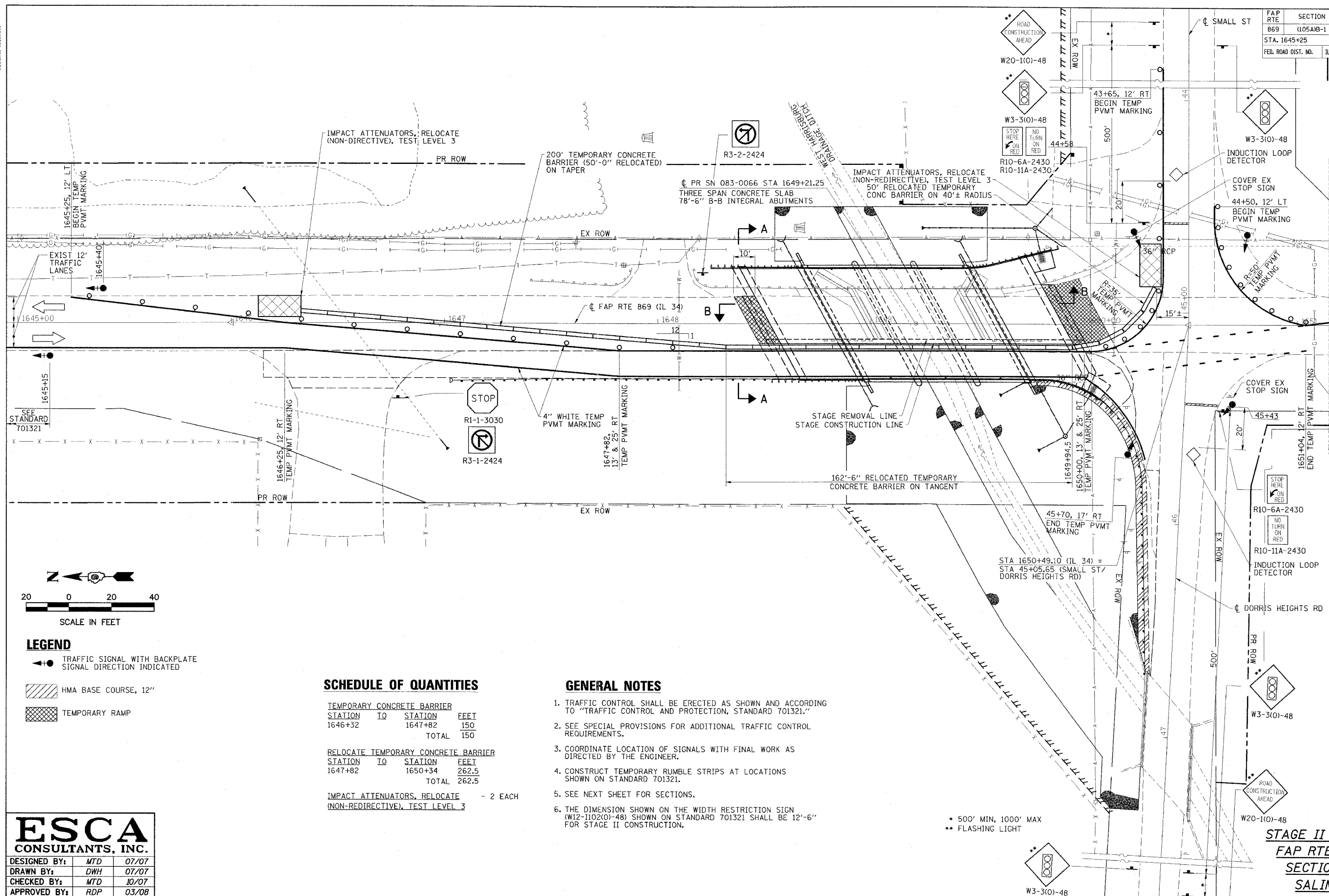


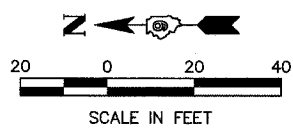


CONTRACT NO. 98999

FAP RTE	SECTION	COUNTY	TOTAL SHEETS	SHEET NO.
869	(105A)B-1	SALINE	71	18
STA. 1645+25		TO STA. 1651+15		
FED. ROAD DIST. NO.		ILLINOIS	FED. AID PROJECT	



MATCHLINE STATION 1651+15
SEE SHT. 19 FOR CONTINUATION



- LEGEND**
- TRAFFIC SIGNAL WITH BACKPLATE
SIGNAL DIRECTION INDICATED
 - HMA BASE COURSE, 12"
 - TEMPORARY RAMP

SCHEDULE OF QUANTITIES

TEMPORARY CONCRETE BARRIER	STATION TO	STATION	FEET
	1646+32	1647+82	150
		TOTAL	150

RELOCATE TEMPORARY CONCRETE BARRIER	STATION TO	STATION	FEET
	1647+82	1650+34	262.5
		TOTAL	262.5

IMPACT ATTENUATORS, RELOCATE (NON-REDIRECTIVE), TEST LEVEL 3 - 2 EACH

GENERAL NOTES

- TRAFFIC CONTROL SHALL BE ERECTED AS SHOWN AND ACCORDING TO "TRAFFIC CONTROL AND PROTECTION, STANDARD 701321."
- SEE SPECIAL PROVISIONS FOR ADDITIONAL TRAFFIC CONTROL REQUIREMENTS.
- COORDINATE LOCATION OF SIGNALS WITH FINAL WORK AS DIRECTED BY THE ENGINEER.
- CONSTRUCT TEMPORARY RUMBLE STRIPS AT LOCATIONS SHOWN ON STANDARD 701321.
- SEE NEXT SHEET FOR SECTIONS.
- THE DIMENSION SHOWN ON THE WIDTH RESTRICTION SIGN (W12-1(0)(0)-48) SHOWN ON STANDARD 701321 SHALL BE 12'-6" FOR STAGE II CONSTRUCTION.

• 500' MIN, 1000' MAX
•• FLASHING LIGHT

ESCA
CONSULTANTS, INC.

DESIGNED BY:	MTD	07/07
DRAWN BY:	DWH	07/07
CHECKED BY:	MTD	10/07
APPROVED BY:	RDP	03/08

STAGE II CONSTRUCTION
FAP RTE 869 (IL 34)
SECTION (105A)B-1
SALINE COUNTY