

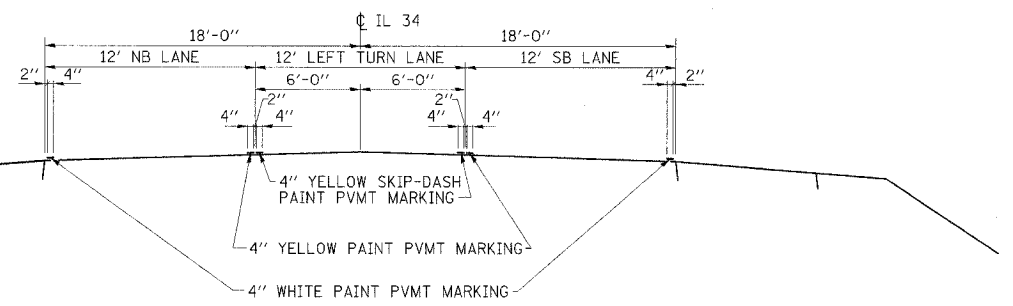
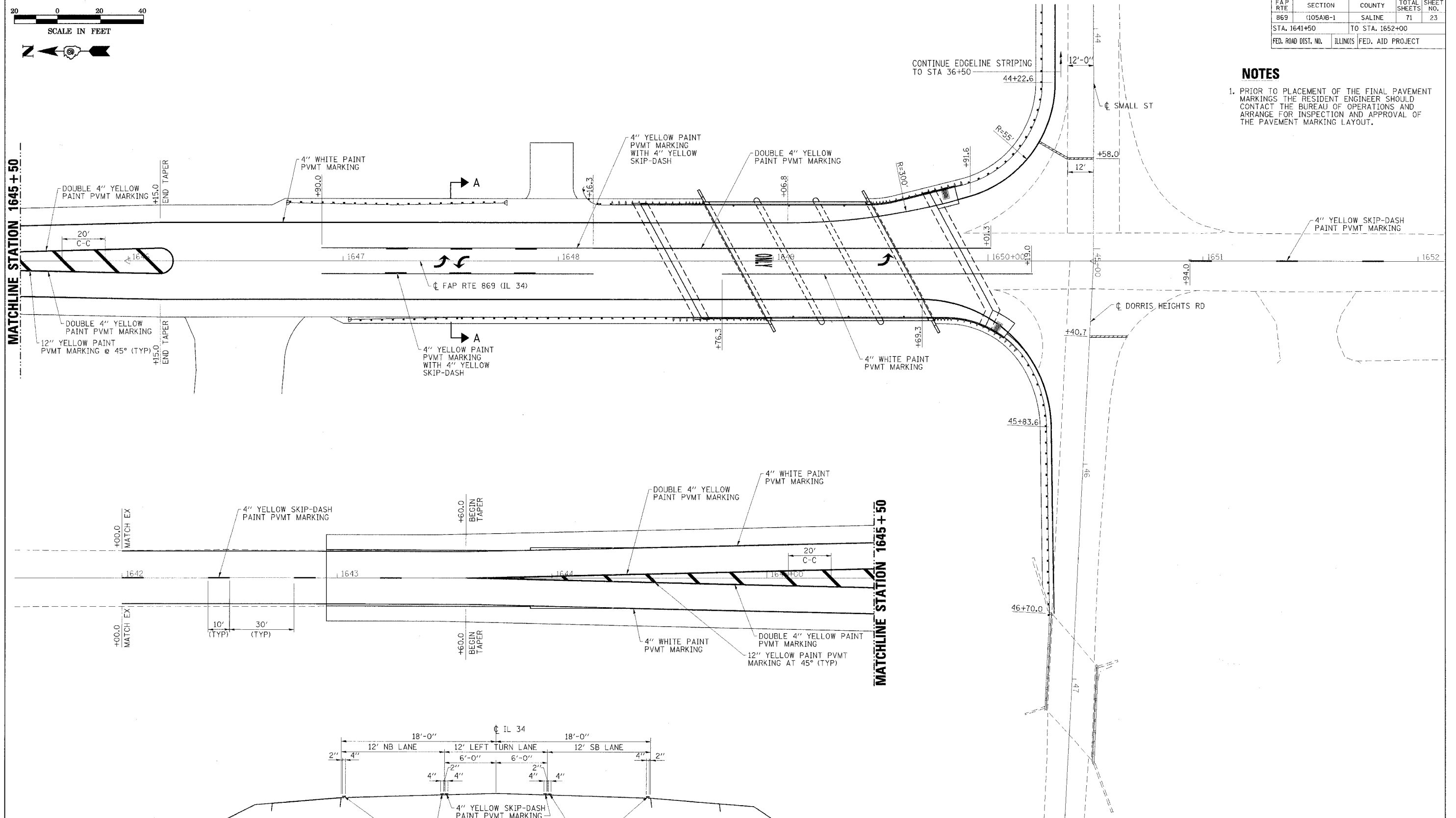
CONTRACT NO. 98999				
FAP RTE	SECTION	COUNTY	TOTAL SHEETS	SHEET NO.
869	(105A)B-1	SALINE	71	23
STA. 1641+50		TO STA. 1652+00		
FED. ROAD DIST. NO.	ILLINOIS	FED. AID PROJECT		

**NOTES**

1. PRIOR TO PLACEMENT OF THE FINAL PAVEMENT MARKINGS THE RESIDENT ENGINEER SHOULD CONTACT THE BUREAU OF OPERATIONS AND ARRANGE FOR INSPECTION AND APPROVAL OF THE PAVEMENT MARKING LAYOUT.

MATCHLINE STATION 1645 + 50

MATCHLINE STATION 1645 + 50



**SECTION A-A**

**ESCA**  
CONSULTANTS, INC.

DESIGNED BY:	MTD	07/07
DRAWN BY:	HAS	03/08
CHECKED BY:	MTD	03/08
APPROVED BY:	RDP	03/08

*PAVEMENT MARKING DETAILS*  
FAP RTE 869 (IL 34)  
SECTION (105A)B-1  
SALINE COUNTY