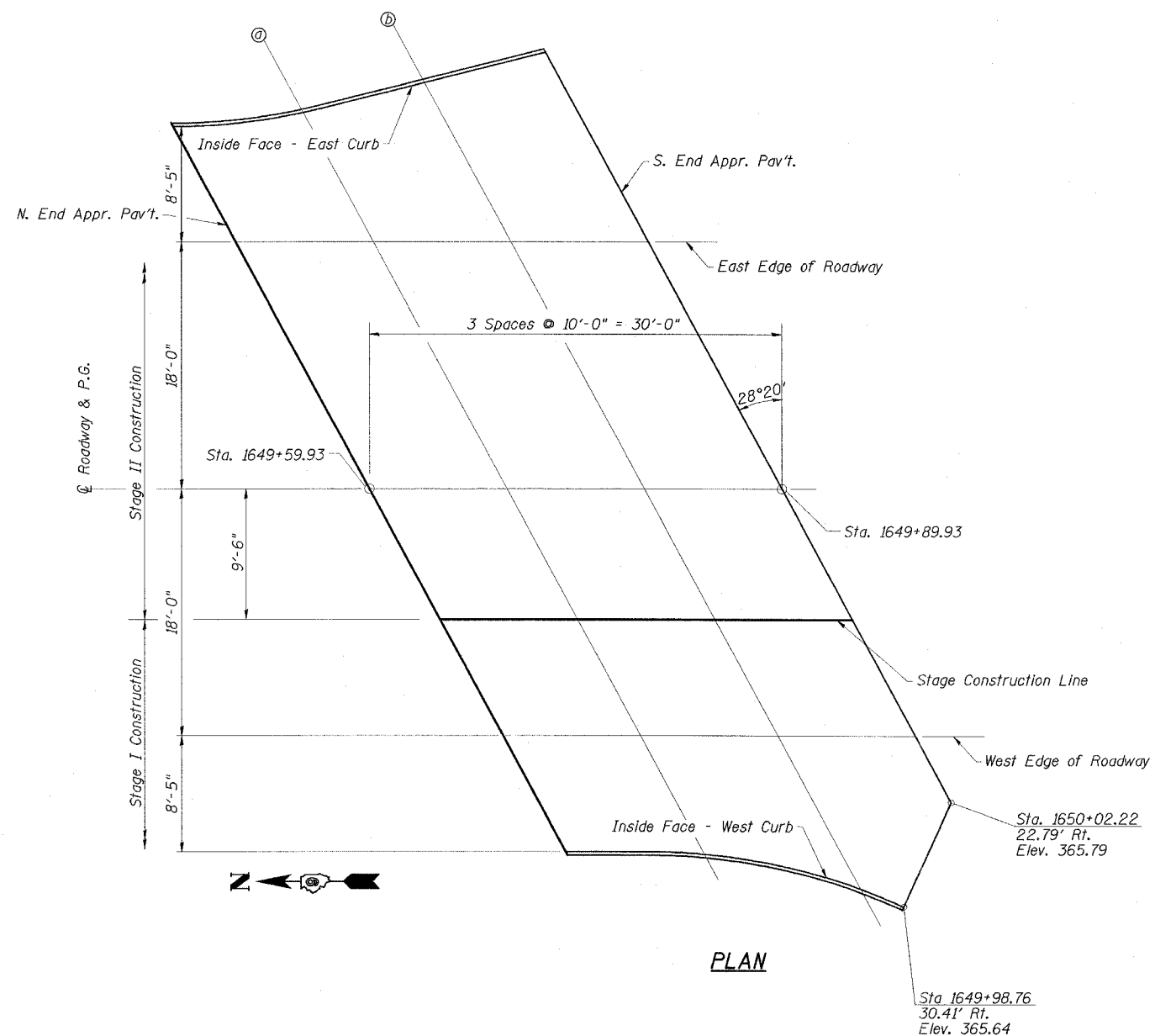


STATE OF ILLINOIS
DEPARTMENT OF TRANSPORTATION

ROUTE NO.	SECTION	COUNTY	SHEET NO.	SHEET NO.
FAP 869	*	SALINE	71	36
FED. ROAD DIST. NO.				17 SHEETS
ALLIANCE				
FED. AID PROJECT				

CONTRACT NO. 98999 (105A)B-1



INSIDE FACE - WEST CURB

Location	Station	Offset	Theoretical Grade Elevations
N. End Appr. Pav't	1649+74.18	+26.42	365.77
a	1649+84.27	+26.59	365.75
b	1649+95.64	+29.13	365.67

CL ROADWAY & PROFILE GRADE

Location	Station	Offset	Theoretical Grade Elevations
N. End Appr. Pav't	1649+59.93	0.00	366.25
a	1649+69.93	0.00	366.23
b	1649+79.93	0.00	366.22
S. End Appr. Pav't	1649+89.93	0.00	366.20

WEST EDGE OF ROADWAY

Location	Station	Offset	Theoretical Grade Elevations
N. End Appr. Pav't	1649+69.64	+18.00	365.95
a	1649+79.64	+18.00	365.93
b	1649+89.64	+18.00	365.92
S. End Appr. Pav't	1649+99.64	+18.00	365.90

EAST EDGE OF ROADWAY

Location	Station	Offset	Theoretical Grade Elevations
N. End Appr. Pav't	1649+50.23	-18.00	365.99
a	1649+60.23	-18.00	365.97
b	1649+70.23	-18.00	365.95
S. End Appr. Pav't	1649+80.23	-18.00	365.93

STAGE CONSTRUCTION JOINT

Location	Station	Offset	Theoretical Grade Elevations
N. End Appr. Pav't	1649+65.05	+9.50	366.09
a	1649+75.05	+9.50	366.08
b	1649+85.05	+9.50	366.06
S. End Appr. Pav't	1649+95.05	+9.50	366.04

INSIDE FACE - EAST CURB

Location	Station	Offset	Theoretical Grade Elevations
N. End Appr. Pav't	1649+45.69	-26.42	365.82
a	1649+55.13	-27.45	365.78
b	1649+63.95	-29.64	365.72
S. End Appr. Pav't	1649+72.76	-31.85	365.66

ESCA
CONSULTANTS, INC.

DESIGNED BY:	FMA	2/08
DRAWN BY:	DWH/cj	2/08
CHECKED BY:	RDP	2/08
APPROVED BY:	RDP	3/08

TOP OF SOUTH APPROACH
SLAB ELEVATIONS
IL 34 OVER
WEST HARRISBURG DRAINAGE DITCH
FAP ROUTE 869 - SECTION (105A)B-1
SALINE COUNTY
STATION 1649+21.50
STRUCTURE NO. 083-0066