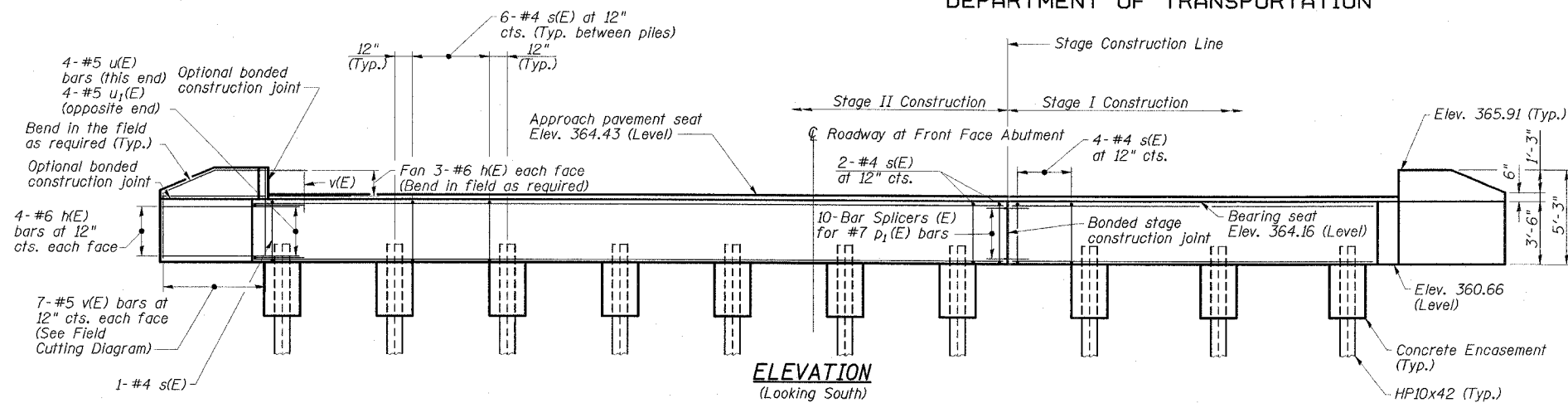
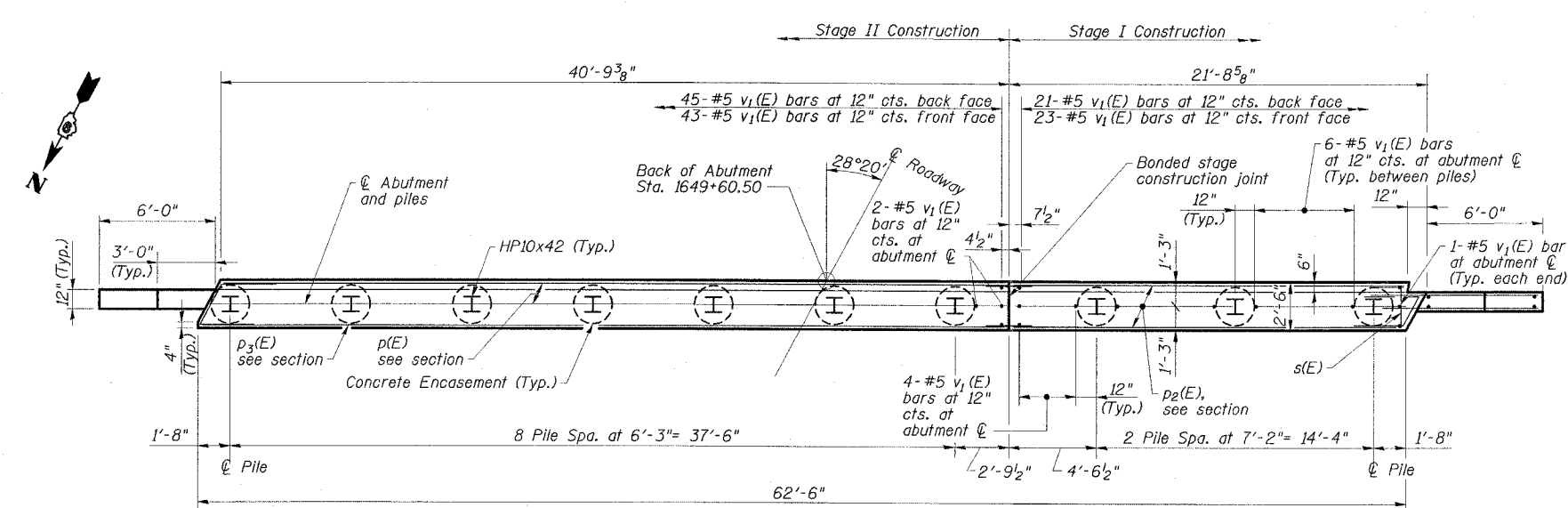


STATE OF ILLINOIS
DEPARTMENT OF TRANSPORTATION

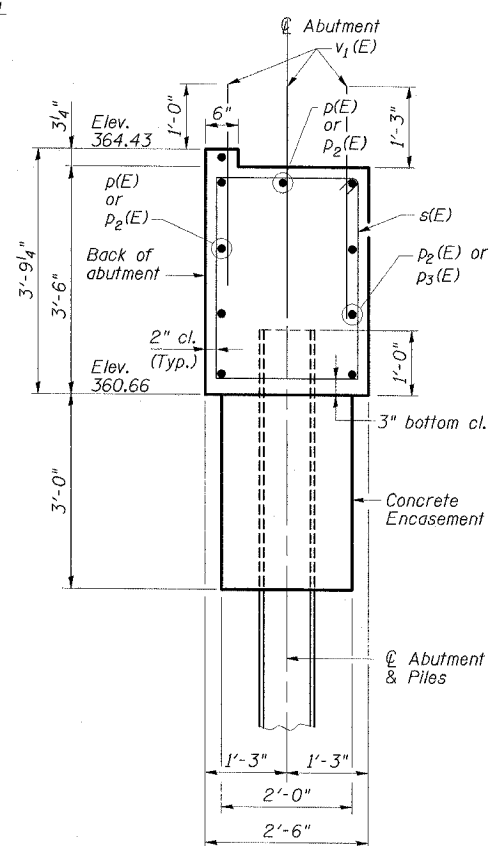
ROUTE NO.	SECTION	COUNTY	SHEET NO.	SHEET NO.
FAP 869	*	SALINE	71	41
SHEET NO. 12				
17 SHEETS				
CONTRACT NO. 98999				
*(105A)B-1				



ELEVATION
(Looking South)



PLAN



SECTION THRU SOUTH ABUTMENT
(Horizontal dimensions at right angles)

**SOUTH ABUTMENT
BILL OF MATERIAL**

Bar	No.	Size	Length	Shape
h(E)	28	#6	8'-0"	—
p(E)	6	#7	40'-7"	—
p2(E)	10	#7	20'-4"	—
p3(E)	4	#7	41'-9"	—
s(E)	112	#4	11'-0"	□
u(E)	4	#5	8'-0"	┘
u1(E)	4	#5	7'-5"	┘
v(E)	14	#5	8'-0"	—
v1(E)	187	#5	3'-6"	—
Reinforcement Bars, Epoxy Coated		Pound	3280	
Concrete Structures		Cu. Yd.	23	
Structure Excavation		Cu. Yd.	100	
Furnishing Steel Piles HP10x42		Foot	216	
Driving Piles		Foot	216	
Test Pile Steel HP10x42		Each	1	
Porous Granular Embankment (Special)		Cu. Yd.	29	
Bar Splicers		Each	10	
Concrete Encasement		Cu. Yd.	3.5	
Geocomposite Wall Drain		Sq. Yd.	31	
Pipe Underdrains for Structures, 4"		Foot	103	

Note: Field cut p(E) & p1(E) bars as required.

MIN. BAR LAP

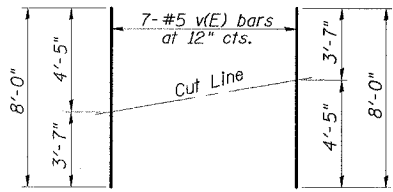
#5 1'-10"

NOTES

1. For pile details and concrete encasement details see Dwg. No. 16 of 17.

PILE DATA

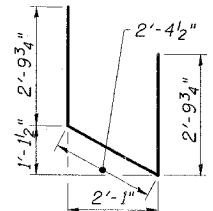
Pile Type & Size: Steel HP10x42
Nominal Required Bearing: 335 kips
Allowable Resistance Available: 111 kips
Estimated Pile Length: 24'
No. of Production Piles: 9
No. of Test Piles: 1



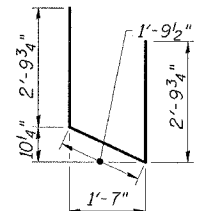
BAR v(E)

FIELD CUTTING DIAGRAM

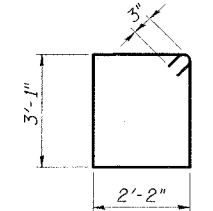
Order v(E) full length. Cut as shown and use remainder of bars in opposite face.



BAR u(E)



BAR u1(E)



BAR s(E)

BAR BENDING DETAILS

ESCA
CONSULTANTS, INC.

DESIGNED BY:	FMA	2/08
DRAWN BY:	DWH/JPC	2/08
CHECKED BY:	RDP	2/08
APPROVED BY:	RDP	3/08

SOUTH ABUTMENT
IL 34 OVER
WEST HARRISBURG DRAINAGE DITCH
FAP ROUTE 869 - SECTION (105A)B-1
SALINE COUNTY
STATION 1649+21.50
STRUCTURE NO. 083-0066