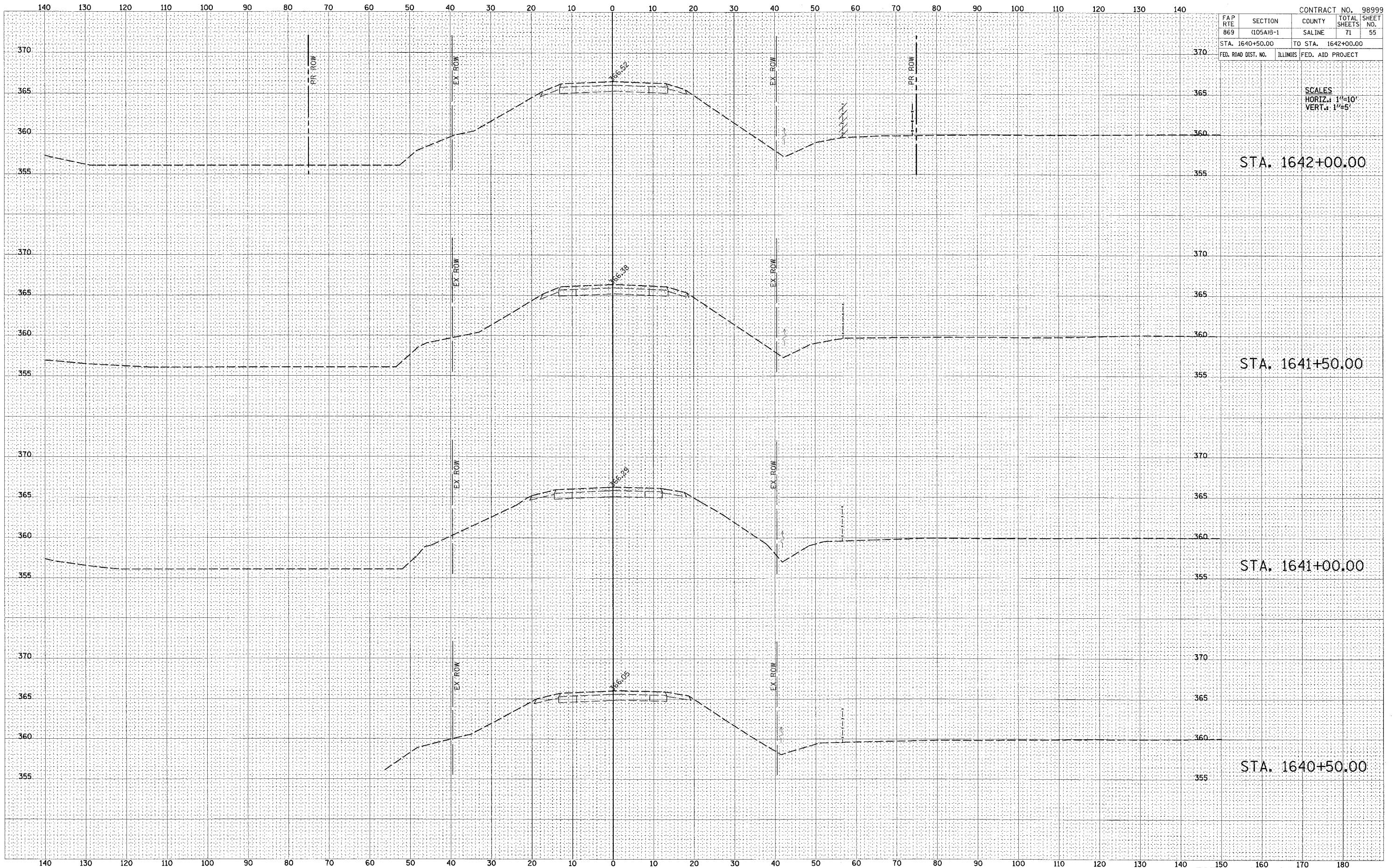




DATE	
BY	
FINAL SURVEY	
SUBMITTED	
NOTE BOOK	
TEMPLATE	
AREAS CHECKED	
NO.	

DATE	
BY	
ORIGINAL SURVEY	
SUBMITTED	
NOTE BOOK	
TEMPLATE	
AREAS CHECKED	
NO.	



CONTRACT NO. 98999				
FAP RTE	SECTION	COUNTY	TOTAL SHEETS	SHEET NO.
869	(105A1B-1)	SALINE	71	55
STA. 1640+50.00		TO STA. 1642+00.00		
FED. ROAD DIST. NO.	ILLINOIS	FED. AID PROJECT		

SCALES  
HORIZ.: 1"=10'  
VERT.: 1"=5'

STA. 1642+00.00

STA. 1641+50.00

STA. 1641+00.00

STA. 1640+50.00