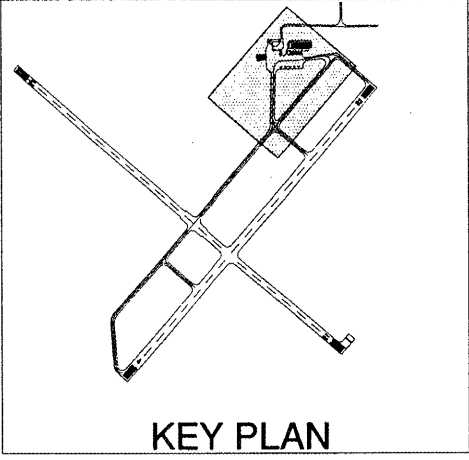
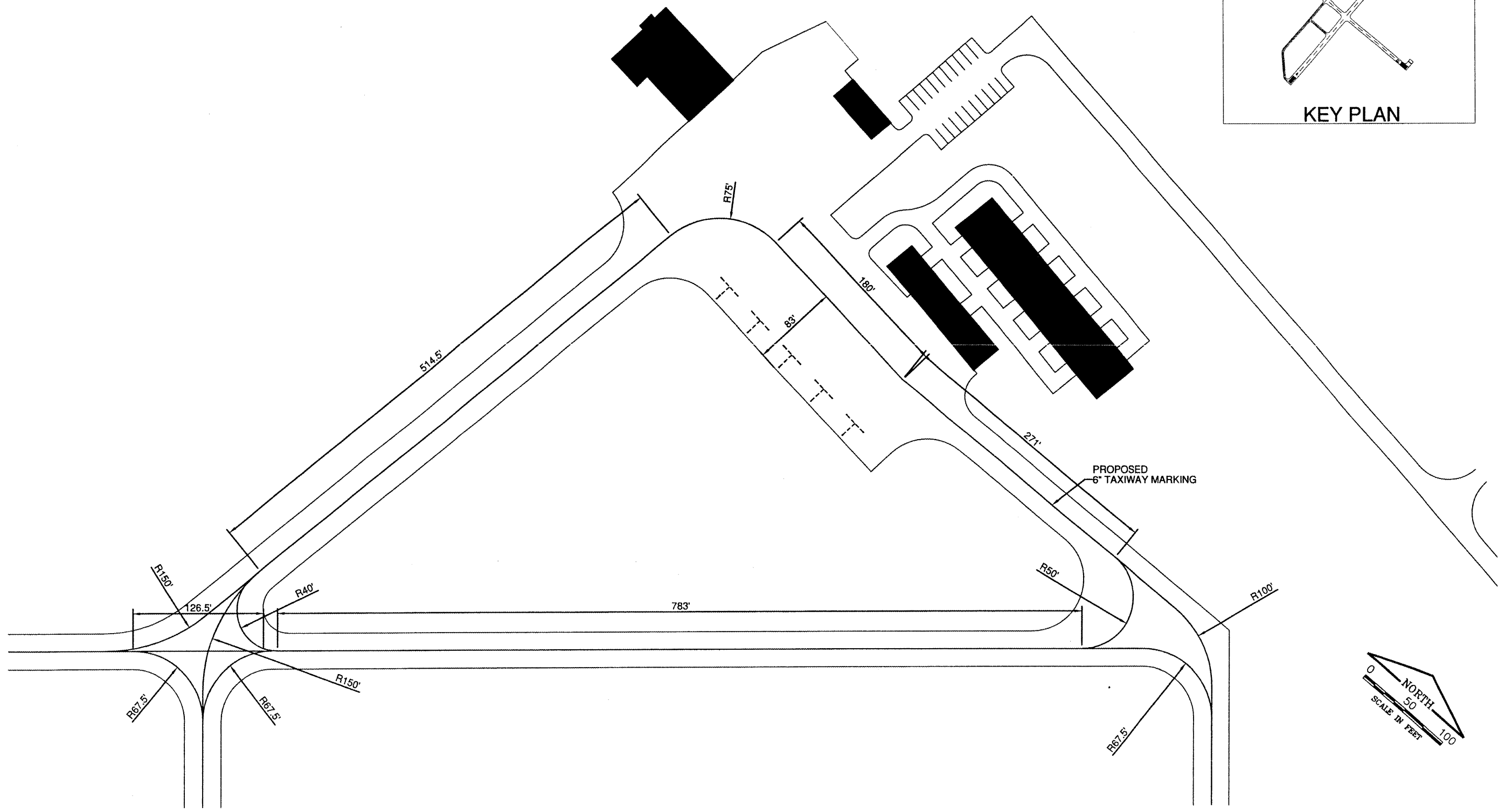
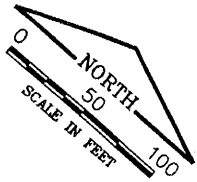


JUL 09, 2008 2:57 PM 81NK00461  
 C:\AIRPORTS\WTCARMELO\08A0016\AIRPORT\08A0016\MARKING - MARKING



MC022



DATE	REVISION	BY

THE CITY OF  
**Mount Carmel**  
 MT. CARMEL MUNICIPAL AIRPORT  
 A.I.P. PROJ.: 3-17-0073-B13  
 I.L. PROJ.: AIG-3779

Hil. Project No. 08A0016D_0800	J.S.L.	04/24/08
Filename R-157MRK.DWG	B.A.K.	04/24/08
Scale 1" = 50'	xxx	xx/xx/xx
Date 04/24/08		
LAYOUT		
DRAWN		
REVIEWED		

**HANSON**  
 Hanson Professional Services Inc.  
 1524 South State Street  
 Springfield, Illinois 62703-2898  
 Offices Nationwide

REHAB. PARALLEL TAXIWAY & MARKINGS  
 MARKING PLAN  
 TAXIWAY & RAMP AREA