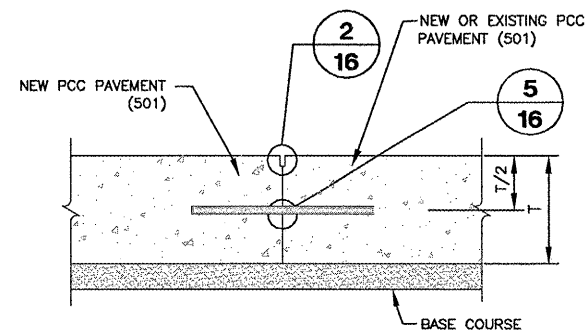
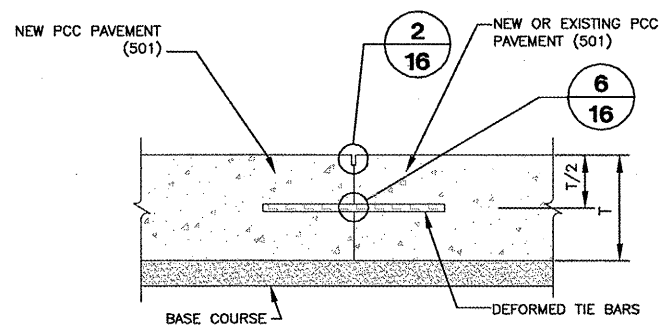


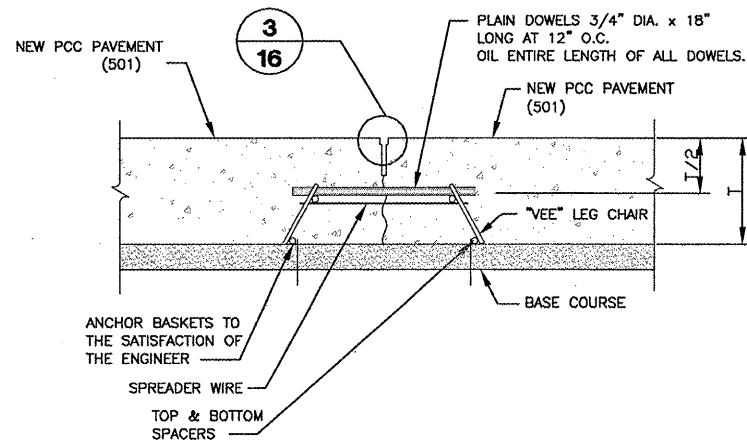
B TYPE B THICKENED EDGE EXPANSION JOINT DETAIL
NTS



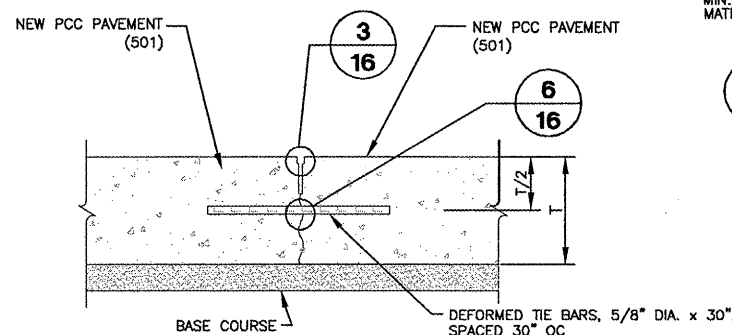
D TYPE D CONSTRUCTION JOINT DETAIL
NTS



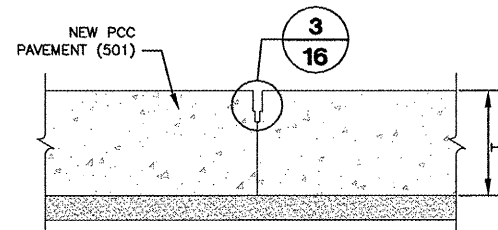
E TYPE E HINGED CONSTRUCTION JOINT DETAIL
NTS



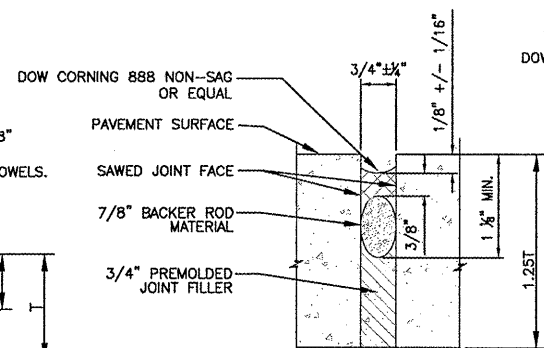
F TYPE F CONTRACTION JOINT DETAIL
NTS



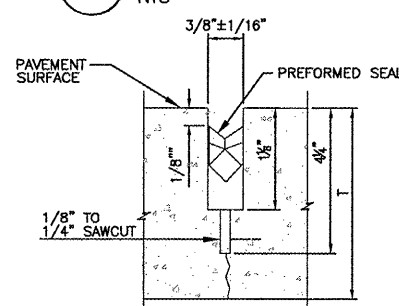
G TYPE G HINGED CONTRACTION JOINT DETAIL
NTS



H CONTRACTION JOINT DETAIL
NTS

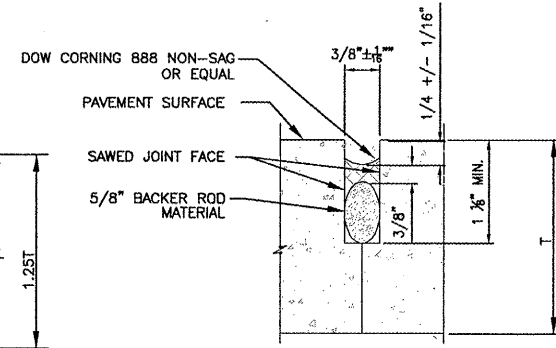


1 EXPANSION JOINT
NTS

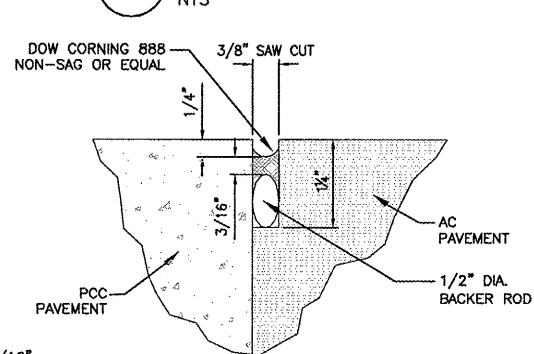


3 CONTRACTION JOINT
NTS

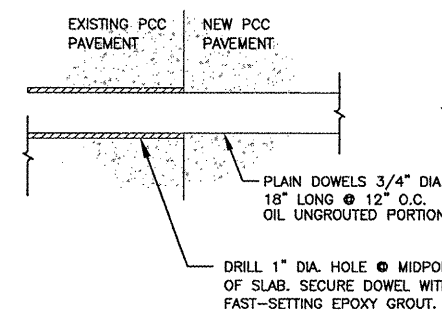
MIN. ACCEPTABLE WIDTH OF PREFORMED SEAL MATERIAL PRIOR TO INSTALLATION SHALL BE 1/2" ± 1/16"



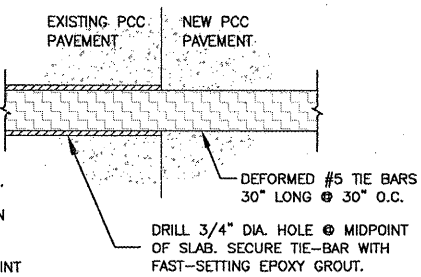
2 CONSTRUCTION JOINT
NTS



4 PCC-AC JOINT SEAL DETAIL
NTS



5 DOWEL DETAIL
NTS



6 TIE-BAR DETAIL
NTS

NOTE: T=14" OR 18" THIS PROJECT

MATERIAL SCHEDULE			
ITEM	SIZE	STANDARD	REMARKS
DOWELS, D & F JOINTS	3/4" INCH DIA x 18" INCHES LONG @ 12" O.C.	ASTM A 615 GRADE 60	EPOXY COATED, INCLUDING ENDS, AASHTO M254
TIE BARS	NO. 5 DEFORMED BARS x 30 INCHES LONG @ 30 INCHES O.C.	ASTM A 615 GRADE 40 OR 60	EPOXY COATED, MAY FIELD BEND GRADE 40
REINFORCED SLABS TYPE R	NO. 5 DEFORMED BAR MATS 16 INCHES O.C. EACH WAY	ASTM A 184 GRADE 60 ASTM A 615 GRADE 60	MESH NOT ALLOWED USE 12 INCH GRID OVERLAP MAY FIELD TIE REBAR EPOXY COATED, GRADE 40
OTHER REINFORCING	AS NOTED	ASTM A 615 GRADE 40 OR 60 UNLESS OTHERWISE NOTED	FIELD BEND GRADE 40 ONLY EPOXY COATED
EXPANSION BOARD	1" WIDTH x DEPTH REQUIRED	ASTM D 1751 OR D 1752	USE REMOVABLE CAP FOR JOINT SEAL
DOWEL EPOXY	AS REQUIRED	ASTM C 881, TYPE IV, GRADE 3	CLASS C FOR INSTALLATION ABOVE 60 F CLASS B FOR INSTALLATION 40 F TO 60 F CLASS A FOR INSTALLATION BELOW 40 F
SILICONE SEALANT	FIELD APPLIED AS REQUIRED	ASTM D 5893	SELF LEVELING USE MANUFACTURERS PRIMER

PE087

RS&H
IMPROVING YOUR WORLD

850 East Diehl Road
Suite 120
Naperville, Illinois 60563
630-505-1991 FAX 630-505-1977
www.rsandh.com

GREATER
Peoria
REGIONAL
Airport
PEORIA, ILLINOIS

TERMINAL
APRON
EXPANSION

SUBCONSULTANTS

PSA Dewberry

STS AECOM

IL PROJECT: PIA-3812
AIP PROJECT: 3-17-0080-46

REVISIONS

NO.	DESCRIPTION	DATE

DATE ISSUED: 06/27/08

REVIEWED BY: PCB

DRAWN BY: MJL

DESIGNED BY: NDO

AEP PROJECT NUMBER

213-6945-000

© 2008 REYNOLDS, SMITH AND HILLS INC.

SHEET TITLE

JOINT DETAILS

SHEET NUMBER

16 OF 43

ISSUED FOR
BID DOCUMENTS