

STATE OF ILLINOIS
DEPARTMENT OF TRANSPORTATION
DIVISION OF HIGHWAYS

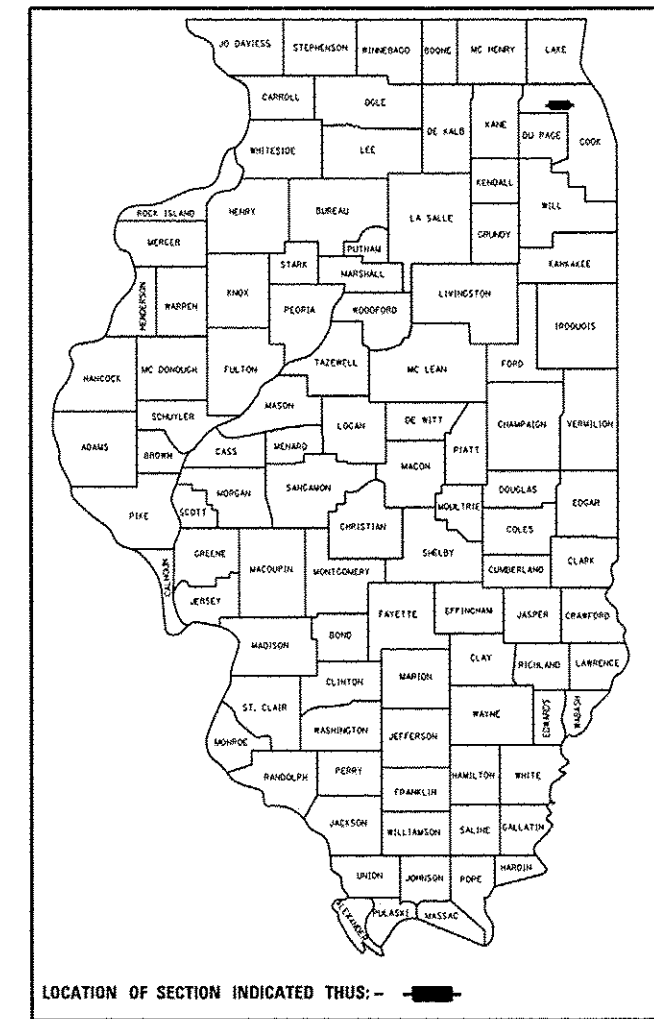
**PROPOSED
HIGHWAY PLANS**

FAP ROUTE 559: ILL 58 (GOLF RD.)
I-290 TO WEST OF I-90
SECTION 582R-1-RS-2
RESURFACING (3P)
COOK COUNTY
C-91-075-11

F.A.P. RTE.	SECTION	COUNTY	TOTAL SHEETS	SHEET NO.
559	582R-1-RS-2	COOK	22	1
ILLINOIS			CONTRACT NO. 60M08	

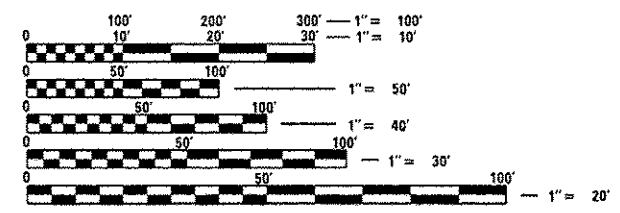
*22 + 2 = 24

D-91-075-11



FOR INDEX OF SHEETS, SEE SHEET NO. 2

PROJECT IS LOCATED IN THE
CITY OF ROLLING MEADOWS



FULL SIZE PLANS HAVE BEEN PREPARED USING STANDARD ENGINEERING SCALES. REDUCED SIZED PLANS WILL NOT CONFORM TO STANDARD SCALES. IN MAKING MEASUREMENTS ON REDUCED PLANS, THE ABOVE SCALES MAY BE USED.

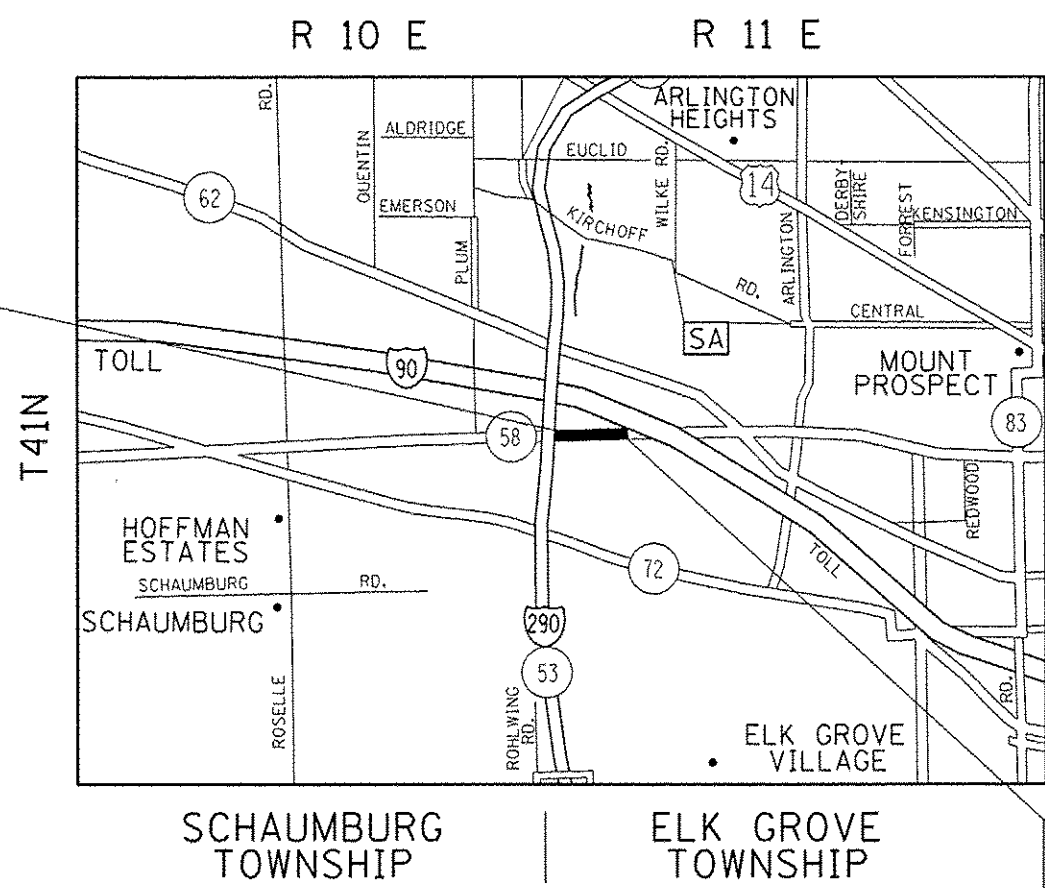
J.U.L.I.E.
JOINT UTILITY LOCATION INFORMATION FOR EXCAVATION
1-800-892-0123
OR 811

PROJECT ENGINEER: DAN WILGREEN (847) 705-4240
PROJECT MANAGER: KEN ENG

CONTRACT NO. 60M08

PROJECT BEGINS:
STA. 11 + 82

OMISSION:
STA. 62 + 96 TO
STA. 63 + 66



TRAFFIC DATA:
SPEED LIMIT = 45 MPH
2011 ADT = 38200

PROJECT ENDS:
STA. 68 + 36

GROSS LENGTH = 5654 FT. = 1.07 MILES
NET LENGTH = 5584 FT. = 1.06 MILES

STATE OF ILLINOIS
DEPARTMENT OF TRANSPORTATION
DIVISION OF HIGHWAYS

SUBMITTED May 28 20 14

John F. [Signature]
DEPUTY DIRECTOR OF HIGHWAYS, REGION ENGINEER

June 27 20 14
John D. Baranzelli, P.E.
ENGINEER OF DESIGN AND ENVIRONMENT

June 27 20 14
Omer Osman, P.E.
DIRECTOR OF HIGHWAYS, CHIEF ENGINEER

PRINTED BY THE AUTHORITY
OF THE STATE OF ILLINOIS

Rev.