

F.A.U. RTE.	SECTION	COUNTY	TOTAL SHEETS	SHEET NO.
1599	0307-RS-6	COOK	29	1
FED. ROAD DIST. NO. 1	ILLINOIS	CONTRACT NO. 60M42		

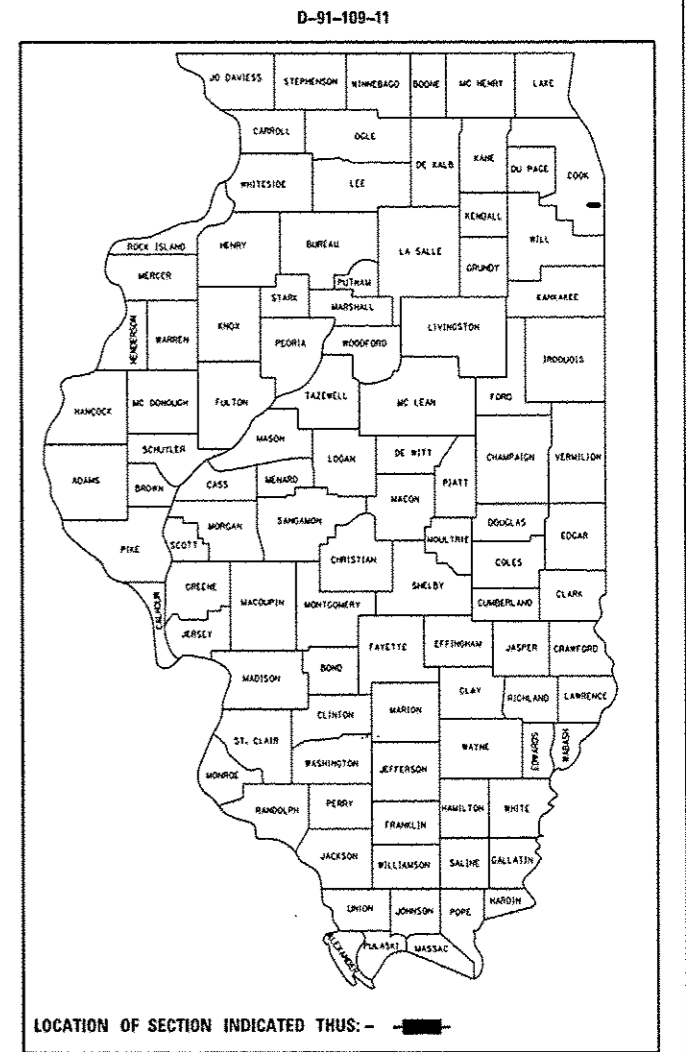
STATE OF ILLINOIS
DEPARTMENT OF TRANSPORTATION
DIVISION OF HIGHWAYS

**PROPOSED
HIGHWAY PLANS**

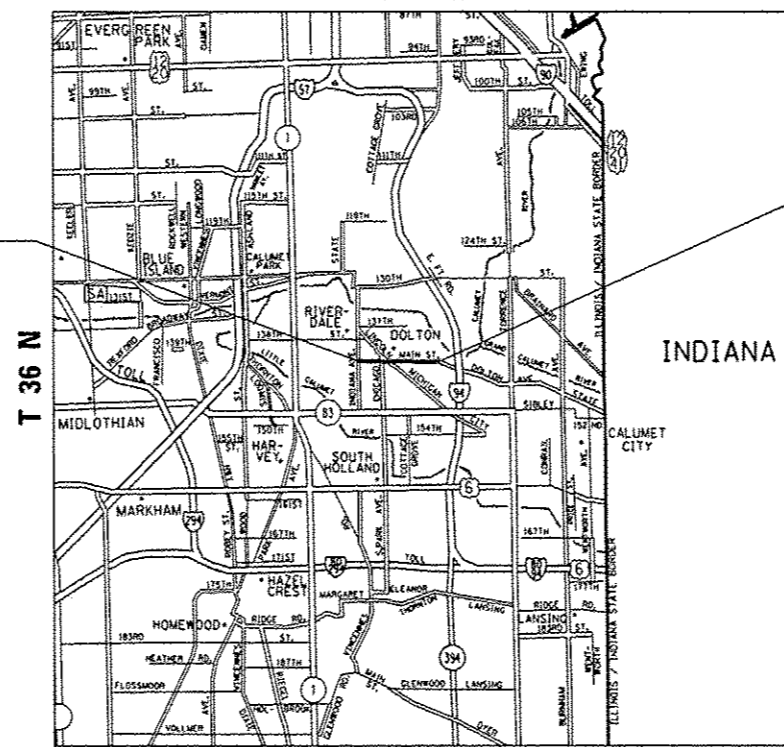
FAU 1599 (MAIN ST./142ND ST.)
INDIANA AVE. TO DOLTON AVE.
SECTION 0707-RS-6
RESURFACING (3P)
COOK COUNTY

FOR INDEX OF SHEETS, SEE SHEET NO. 2

IMPROVEMENT IS LOCATED IN
THE VILLAGE OF DOLTON



C-91-109-11
R 14 E



PROJECT BEGINS
STA. 9+67

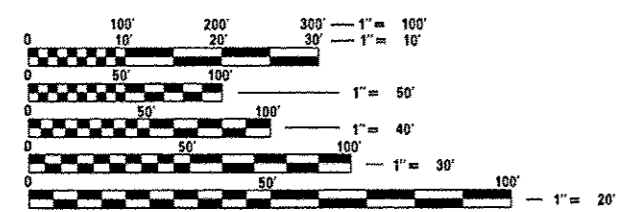
PROJECT ENDS
STA. 89+87

TRAFFIC DATA

2010 ADT = 12400
POSTED SPEED LIMIT = 35-30 MPH

OMISSION:

STA 22+37 TO STA 23+05
STA 35+19 TO STA 36+49
STA 42+45 TO STA 43+25



FULL SIZE PLANS HAVE BEEN PREPARED USING STANDARD ENGINEERING SCALES. REDUCED SIZED PLANS WILL NOT CONFORM TO STANDARD SCALES. IN MAKING MEASUREMENTS ON REDUCED PLANS, THE ABOVE SCALES MAY BE USED.

J.U.L.I.E.
JOINT UTILITY LOCATION INFORMATION FOR EXCAVATION
1-800-892-0123
OR 811

PROJECT ENGINEER: KARI SMITH (847) 705-4437
PROJECT MANAGER: KEN ENG (847) 705-4247

GROSS LENGTH = 8020.00 FT. = 1.519 MILE
NET LENGTH = 7742.00 FT. = 1.466 MILE

CONTRACT NO. 60M42

STATE OF ILLINOIS
DEPARTMENT OF TRANSPORTATION
DIVISION OF HIGHWAYS

SUBMITTED May 29 2014
John Antonian, Jr.
DEPUTY DIRECTOR OF HIGHWAYS, REGION ENGINEER

June 27 2014
John D. Baranzelli, P.E.
ENGINEER OF DESIGN AND ENVIRONMENT

June 27 2014
Omer Osman, P.E.
DIRECTOR OF HIGHWAYS, CHIEF ENGINEER

PRINTED BY THE AUTHORITY
OF THE STATE OF ILLINOIS