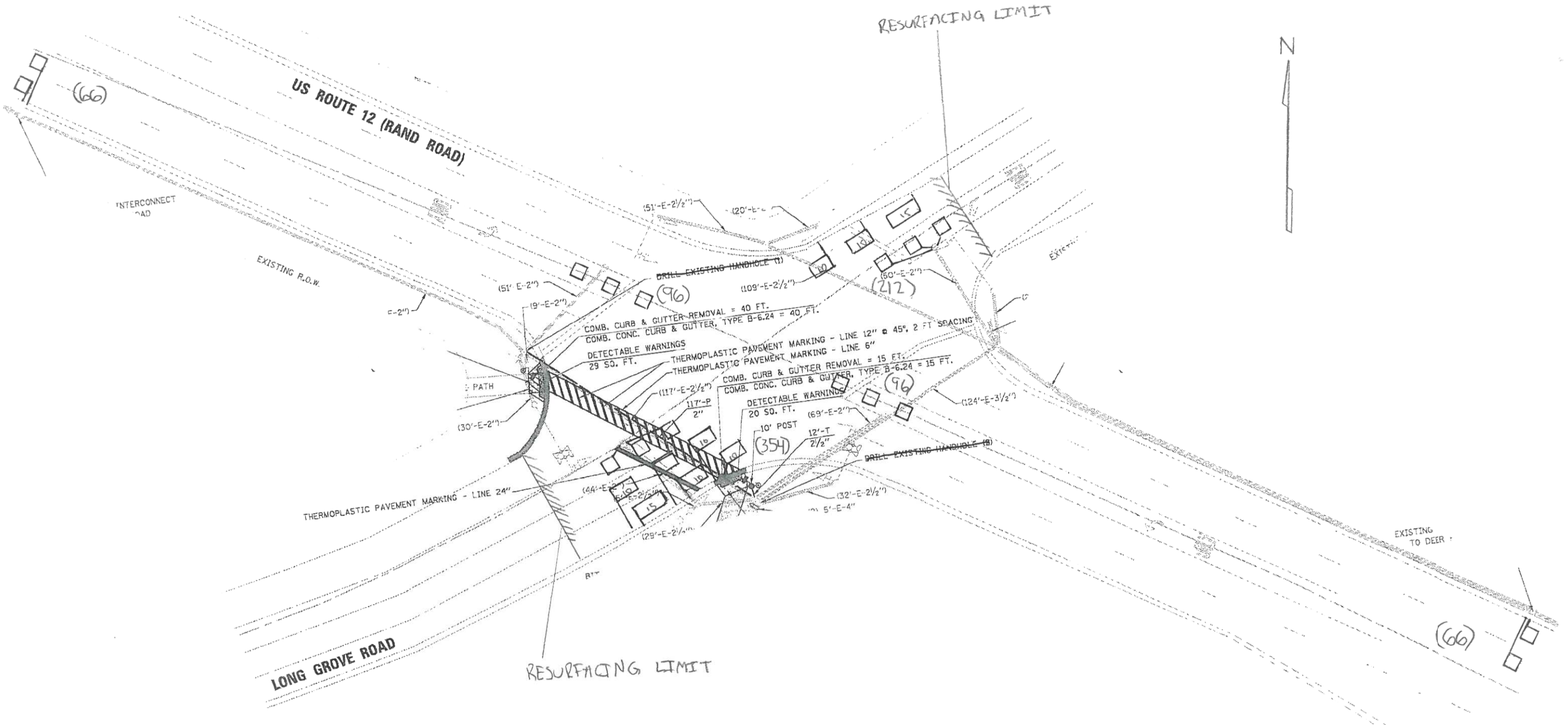


WORK SHALL MEET THE REQUIREMENTS OF THE SPECIAL PROVISION, "TRAFFIC SIGNAL SIGNAL SPECIFICATIONS FOR DETECTOR LOOP REPLACEMENT AND/OR INSTALLATION ON ROADWAY GRINDING, RESURFACING AND PATCHING OPERATIONS". SPECIAL ATTENTION MUST BE MADE TO THE SECTIONS "INSPECTION OF CONSTRUCTION" AND "DETECTOR LOOP REPLACEMENT" FOR INSTALLATION AND INSPECTION REQUIREMENTS. LOOP REPLACEMENT WORK THAT DOES NOT MEET THE CONTRACT REQUIREMENTS SHALL NOT BE PAID. WORK NECESSARY TO COMPLETE THE LOOP REPLACEMENT WORK MAY BE ASSIGNED BY THE ENGINEER TO IDOT'S ELECTRICAL MAINTENANCE CONTRACTOR (EMC); ALL RELATED COSTS WILL BE THE RESPONSIBILITY OF THE CONTRACTOR.

TRAFFIC SIGNAL LEGEND

PROPOSED	EXISTING
SIGNAL HEAD WITH BACKPLATE	➔
SIGNAL HEAD	➔
CALVANIZED STEEL CONDUIT IN TRENCH OR PUSHED	---
DETECTOR LOOP	□
VEHICLE DETECTOR, NON COMPENSATED MAGNETIC TYPE	⊞
RACEWAY FOR MAGNETIC DETECTOR, TYPE I OR TYPE II	⊞



**THIS PLAN IS FOR THE SOLE PURPOSE OF
DETECTOR LOOP REPLACEMENTS ONLY**

**REPLACE ALL DETECTOR LOOPS AS SHOWN
(WITHIN THE RESURFACING LIMITS)**

CODE	QUANTITY	UNIT	ITEM
88600600	890	FOOT	DETECTOR LOOP, REPLACEMENT

COMPANY NAME: HRGreen
 PROJECT CONTACT: HRGreen.com
 DATE PLOTTED: 5/23/2014 11:23:04 AM
 FILE NAME: 86100196.10-loop-08.dgn
 PLOT DRIVER: pafch
 PEN TABLE: standard-trans.tbl



USER NAME = dstencz	DESIGNED -	REVISED -
PLOT SCALE = 1" = 20'	DRAWN -	REVISED -
PLOT DATE = 5/23/2014	CHECKED -	REVISED -
	DATE = 5/23/14	REVISED -

**STATE OF ILLINOIS
DEPARTMENT OF TRANSPORTATION**

**DISTRICT ONE - DETECTOR LOOP REPLACEMENT
US ROUTE 12 AT LONG GROVE ROAD**

SCALE: 1" = 20' SHEET NO. 8 OF 11 SHEETS STA. NA TO STA. NA

F.A.P. RTE. 334	SECTION SY-3-RS-4	COUNTY LAKE	TOTAL SHEETS 104	SHEET NO. 42
FED. ROAD DIST. NO. ILLINOIS FED. AID PROJECT			CONTRACT NO. 60N26	