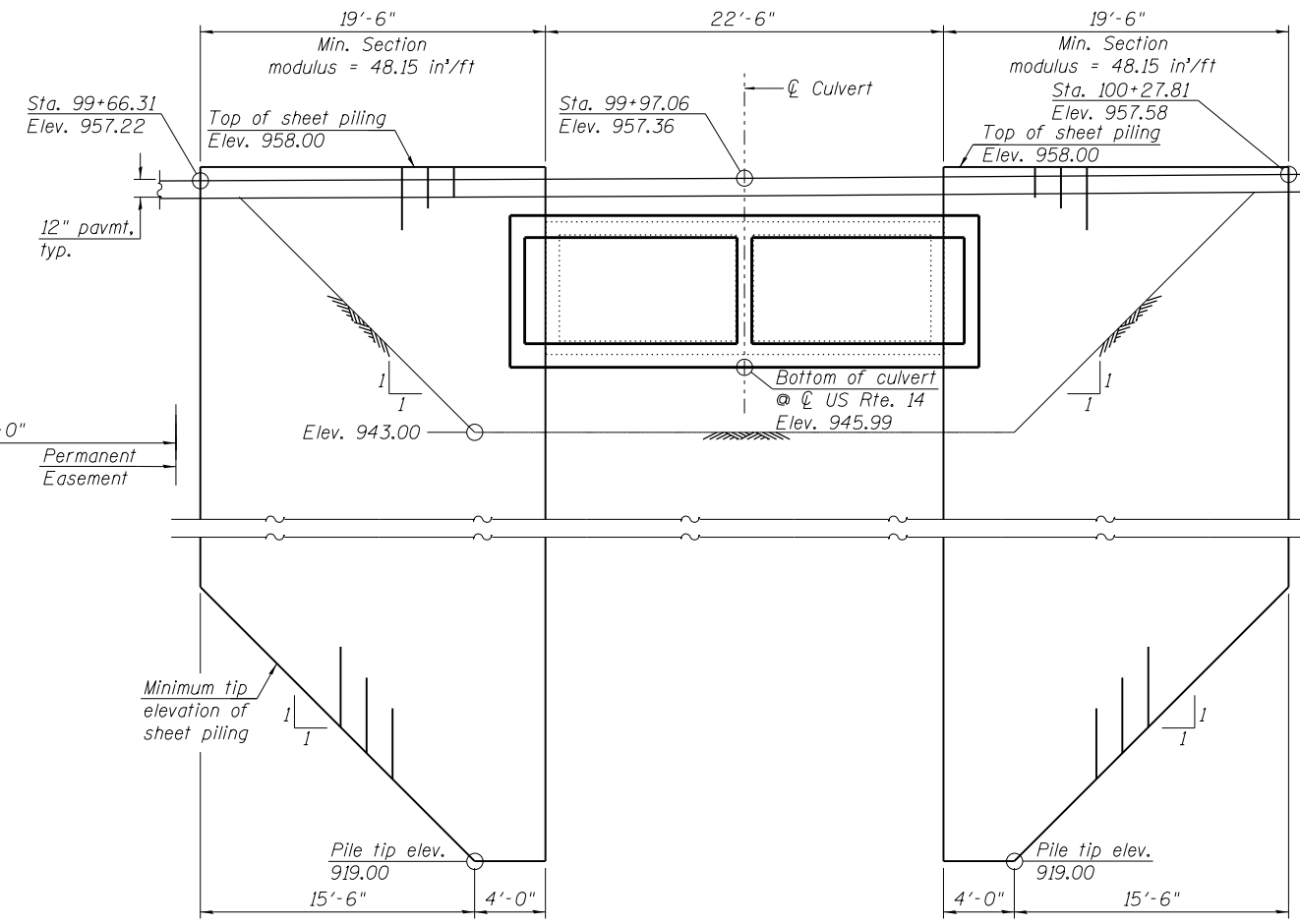


LEGEND

Removal of existing structure

STRUCTURAL NOTES:

1. Reinforcement bars designated (E) shall be epoxy coated.
2. A distance of half the length of the wingwall but not less than six feet of the barrel shall be poured monolithically with the wingwalls.
3. Precast culvert alternate is not allowed.
4. The limits and quantities of removal of the existing soil and replacement with the aggregate subgrade improvement materials shown are based on the boring data and may be modified by the District Geotechnical and Field Engineers for variable subsurface conditions encountered in the field.
5. Layout of the slope protection system may be varied to suit ground conditions in the field as directed by the Engineer.
6. If the Contractor chooses to alter the temporary cantilevered sheet piling design requirements shown on the plans, a design submittal including plan details and calculations will be required for review and acceptance by the Engineer.
7. Removal of unsuitable material and replacement with aggregate subgrade improvement will be required below the culvert barrels in the northwest quadrant of the culvert during construction. The limits and quantities of removal and replacement shown for the culvert barrel are based on the Boring CB-01 data and may be modified during construction. The District Geotechnical and Field Engineers will identify limits and quantity for variable subsurface conditions encountered in the field.
8. For details of temporary concrete barrier, see Sheet S-4.
9. For quantity of temporary concrete barrier, see roadway plan.
10. For limits of aggregate subgrade improvement, see SECTION THRU BARREL on Sheet S-8.



TEMPORARY SHEET PILING DESIGN
(All dimensions are along the front face of existing culvert)

HBM
ENGINEERING GROUP, LLC
CONSULTING & DESIGN
INSPECTION & TESTING
RESEARCH & TESTING

4415 WEST HARRISON ST.
SUITE 231
MILLSIDE, IL 60162
PHONE: (708) 236-0900
FAX: (708) 236-0901

USER NAME = mustafa.alobaidi
FILE NAME = 0560086-60V25-002-Stage Const Dtl.dgn
PLOT SCALE = N.T.S.
PLOT DATE = 5/2/2014

DESIGNED - JMG, MAF
CHECKED - MI
DRAWN - JMG, PH
CHECKED - MI, MAI

REVISED
REVISED
REVISED
REVISED

**STATE OF ILLINOIS
DEPARTMENT OF TRANSPORTATION**

**STAGE CONSTRUCTION DETAILS I
STRUCTURE NO. 056-0086**

SHEET NO. S-2 OF 11 SHEETS

F.A.P. RTE.	SECTION	COUNTY	TOTAL SHEETS	SHEET NO.
066	21B-R	MCHENRY	40	22

CONTRACT NO. 60V25

ILLINOIS FED. AID PROJECT