

STANDARD BAR SPLICER ASSEMBLY

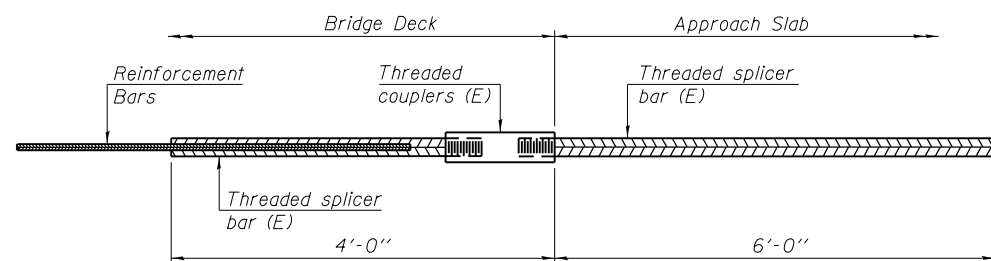
Minimum Lap Lengths						
Bar size to be spliced	Table 1	Table 2	Table 3	Table 4	Table 5	Table 6
3, 4	1'-5"	1'-11"	2'-1"	2'-4"	2'-7"	2'-11"
5	1'-9"	2'-5"	2'-7"	2'-11"	3'-3"	3'-8"
6	2'-1"	2'-11"	3'-1"	3'-6"	3'-10"	4'-5"
7	2'-9"	3'-10"	4'-2"	4'-8"	5'-2"	5'-10"
8	3'-8"	5'-1"	5'-5"	6'-2"	6'-9"	7'-8"
9	4'-7"	6'-5"	6'-10"	7'-9"	8'-7"	9'-8"

- Table 1: Black bar, 0.8 Class C
- Table 2: Black bar, Top bar lap, 0.8 Class C
- Table 3: Epoxy bar, 0.8 Class C
- Table 4: Epoxy bar, Top bar lap, 0.8 Class C
- Table 5: Epoxy bar, Class C
- Table 6: Epoxy bar, Top bar top, Class C

Threaded splicer bar length = min. lap length + 1/2" + thread length

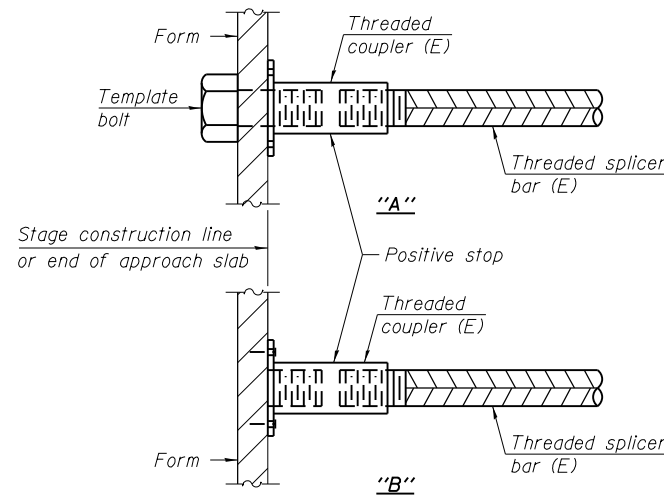
* Epoxy not required on Bar Splicer Assembly components used in conjunction with black bars.

Location	Bar size	No. assemblies required	Table for minimum lap length
Top of bottom slab	#5	36	Table 5
Bottom of bottom slab	#5	36	Table 5
Top of top slab	#5	36	Table 5
Bottom of top slab	#5	36	Table 5
North Wall	#5	7	Table 5
South Wall	#5	7	Table 5
Center Wall	#5	7	Table 5



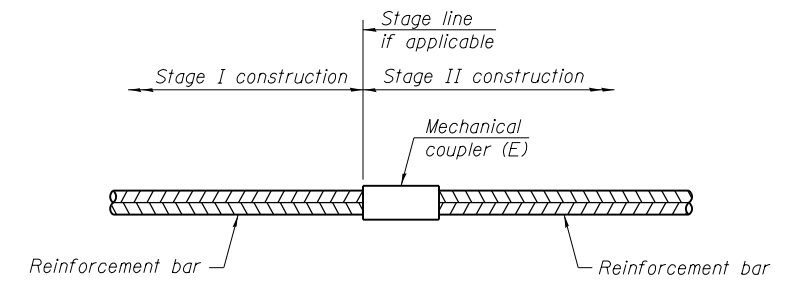
BAR SPLICER ASSEMBLY FOR #5 BAR ON INTEGRAL OR SEMI-INTEGRAL ABUTMENTS

No. required =



INSTALLATION AND SETTING METHODS

"A" : Set bar splicer assembly by means of a template bolt.
 "B" : Set bar splicer assembly by nailing to wood forms or cementing to steel forms.
 (E) : Indicates epoxy coating.

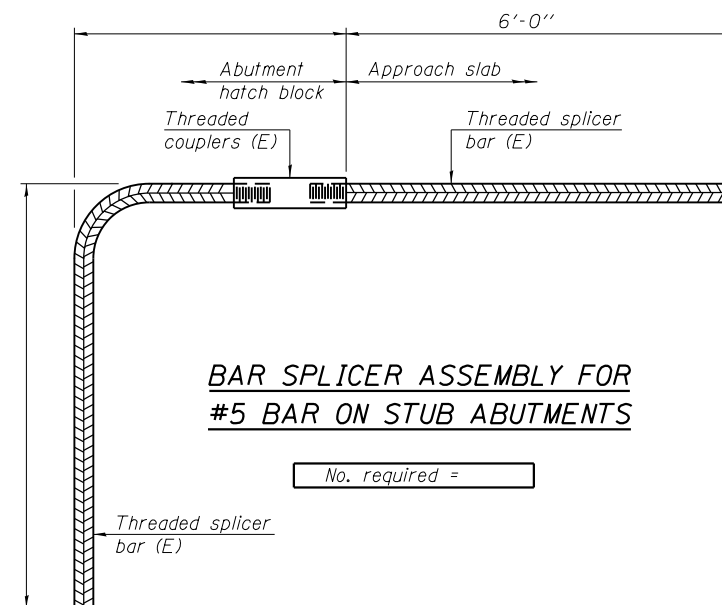


STANDARD MECHANICAL SPLICER

Location	Bar size	No. assemblies required

BILL OF MATERIAL

ITEM	UNIT	TOTAL
Bar Splicers	Each	165



BAR SPLICER ASSEMBLY FOR #5 BAR ON STUB ABUTMENTS

No. required =

NOTES

Splicer bars shall be deformed with threaded ends and have a minimum 60 ksi yield strength.
 All reinforcement shall be lapped and tied to the splicer bars.
 Bar splicer assemblies shall be epoxy coated according to the requirements for reinforcement bars. See Section 508 of the Standard Specifications.
 See approved list of bar splicer assemblies and mechanical splicers for alternatives.

BSD-1

1-27-12

HBM
 ENGINEERING GROUP, LLC
 CONSULTING & DESIGN
 INSPECTION & TESTING
 RESEARCH & TESTING

4415 WEST HARRISON ST.
 SUITE 231
 HILLSIDE, IL 60162
 PHONE: (708) 236-0900
 FAX: (708) 236-0901

USER NAME = mustafa.alobaidi
 FILE NAME = 0560086-60V25-009-Mech Splic Dtls.dgn
 PLOT SCALE = N.T.S.
 PLOT DATE = 5/2/2014

DESIGNED - MAF
 CHECKED - MI
 DRAWN - MAF, PH
 CHECKED - MI, MAI

REVISED
 REVISED
 REVISED
 REVISED

STATE OF ILLINOIS
 DEPARTMENT OF TRANSPORTATION

BAR SPLICER ASSEMBLY AND MECHANICAL SPLICER DETAILS
 STRUCTURE NO. 056-0086

SHEET NO. 5-9 OF 11 SHEETS

F.A.P. RTE.	SECTION	COUNTY	TOTAL SHEETS	SHEET NO.
066	21B-R	MCHENRY	40	29

CONTRACT NO. 60V25

ILLINOIS FED. AID PROJECT