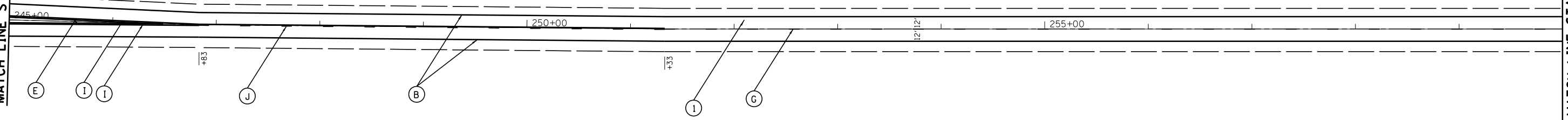


MATCH LINE STA. 245+00

MATCH LINE STA. 260+00

IL. ROUTE 83



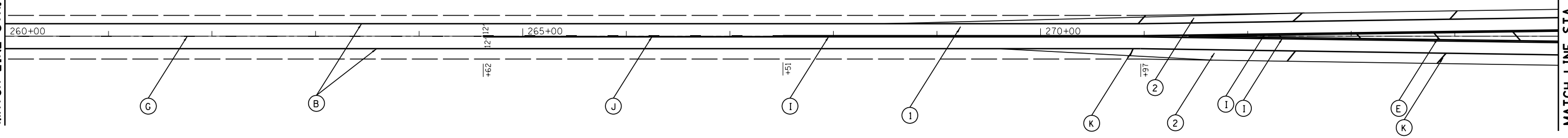
- (A) PROP. THERMOPLASTIC PLASTIC PAVEMENT TURN LANE MARKING-LINE 6", WHITE (TYP.)
- (B) PROP. THERMOPLASTIC PAVEMENT MARKING-LINE 4", WHITE (TYP.)
- (C) PROP. THERMOPLASTIC PAVEMENT MARKING LETTERS AND SYMBOLS, WHITE (TYP.)
- (D) PROP. THERMOPLASTIC PAVEMENT MARKING-LINE 8", WHITE (TYP.)
- (E) PROP. THERMOPLASTIC PAVEMENT MARKING-LINE 12", YELLOW (TYP.)
- (F) PROP. THERMOPLASTIC PAVEMENT MARKING-LINE 4", 10' DASH-30' SKIP, WHITE (TYP.)
- (G) PROP. THERMOPLASTIC PAVEMENT MARKING-LINE 4", 10' DASH-30' SKIP, YELLOW (TYP.)
- (H) PROP. THERMOPLASTIC PAVEMENT STOP MARKING-LINE 24", WHITE (TYP.)
- (I) PROP. THERMOPLASTIC PAVEMENT MARKING DOUBLE LINES 4" @ 11" C-C, YELLOW (TYP.)
- (J) PROP. THERMOPLASTIC PAVEMENT SOLID AND SKIP-DASH MARKING-LINES 4" @ 5 1/2" C-C, YELLOW (TYP.)
- (K) PROP. THERMOPLASTIC PAVEMENT MARKING-LINE 12", WHITE (TYP.)

- (1) PROP. HOT-MIX ASPHALT SURFACE REMOVAL, 2 1/2"
PROP. POLYMERIZED HMA SURFACE COURSE, MIX "F", N90, 1 3/4"
PROP. POLYMERIZED LEVELING BINDER (MACHINE METHOD), IL-4.75, N50, 3/4"
- (2) PROP. HOT-MIX ASPHALT SURFACE REMOVAL, 1 3/4"
PROP. POLYMERIZED HMA SURFACE COURSE, MIX "F", N90, 1 3/4"

MATCH LINE STA. 260+00

MATCH LINE STA. 275+00

IL. ROUTE 83



FILE NAME =	USER NAME = qureshiye	DESIGNED -	REVISED -
ca:\pwwork\pwwork\qureshiye\d0315843\1013-sh-t-plan.dgn		DRAWN -	REVISED -
Default	PLOT SCALE = 100.0000' / in.	CHECKED -	REVISED -
	PLOT DATE = 5/20/2014	DATE -	REVISED -

**STATE OF ILLINOIS
DEPARTMENT OF TRANSPORTATION**

**ILL 83 /ILL 171
ROADWAY & PAVEMENT MARKING PLANS**

SCALE: 1" = 50' SHEET 7 OF 9 SHEETS STA. 245+00 TO STA. 275+00

F.A.P. RTE.	SECTION	COUNTY	TOTAL SHEETS	SHEET NO.
344	(525-1&3114)RS-3	COOK	31	14
CONTRACT NO. 60V62				
ILLINOIS FED. AID PROJECT				