

F.A.I. RTE.	SECTION	COUNTY	TOTAL SHEETS	SHEET NO.
80	2013-0721	COOK/WILL	43	1
		ILLINOIS	CONTRACT NO. 60X49	

STATE OF ILLINOIS  
DEPARTMENT OF TRANSPORTATION  
DIVISION OF HIGHWAYS

**PROPOSED  
HIGHWAY PLANS**

F.A.I. ROUTE 80: INTERSTATE 80  
SECTION: 2013-0721  
U.S. 30 (LINCOLN HWY) TO I-294 (TRI-STATE TOLLWAY)  
MILLED RUMBLE STRIPS AND GUARDRAIL INSTALLATION  
PROJECT: ACHSIP-0080(402)  
COOK COUNTY AND WILL COUNTY  
C-91-114-14

FOR INDEX OF SHEETS, SEE SHEET NO. 2

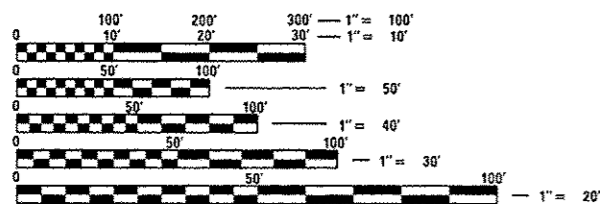
PROJECT LOCATED IN THE CITIES OF COUNTRY CLUB HILLS, HAZEL CREST, NEW LENOX, ORLAND PARK, AND IN THE VILLAGES OF MOKENA AND TINLEY PARK

TRAFFIC DATA

2012 ADT

I-80 = 54,900 - 100,300 ADT

SPEED LIMIT (I-80) = 55 MPH - 65 MPH



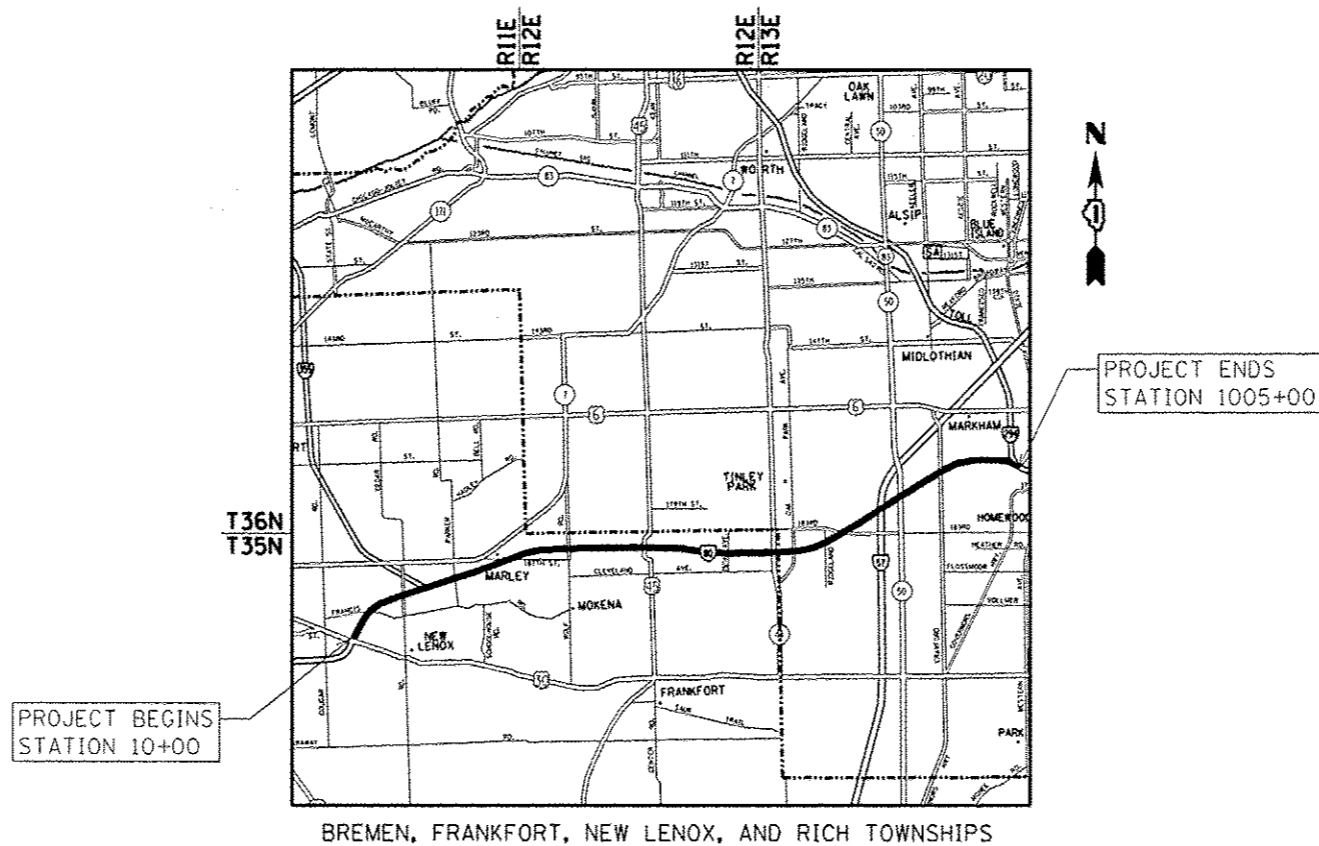
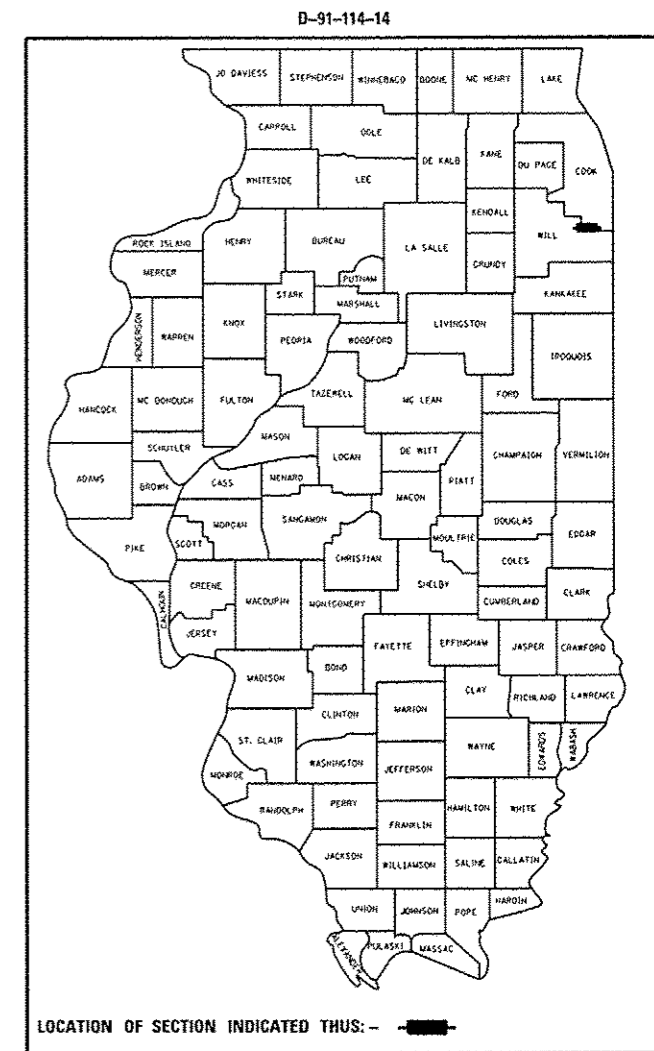
FULL SIZE PLANS HAVE BEEN PREPARED USING STANDARD ENGINEERING SCALES. REDUCED SIZED PLANS WILL NOT CONFORM TO STANDARD SCALES. IN MAKING MEASUREMENTS ON REDUCED PLANS, THE ABOVE SCALES MAY BE USED.

J.U.L.I.E.  
JOINT UTILITY LOCATION INFORMATION FOR EXCAVATION  
1-800-892-0123  
OR 811

PROJECT ENGINEER DAN WILGREEN (847) 705-4240

PROJECT MANAGER KEN ENG (847) 705-4247

CONTRACT NO. 60X49



PROJECT BEGINS  
STATION 10+00

PROJECT ENDS  
STATION 1005+00

BREMEN, FRANKFORT, NEW LENOX, AND RICH TOWNSHIPS

GROSS LENGTH OF PROJECT = 99,500 FT = 18.84 MILE  
NET LENGTH OF PROJECT = 99,500 FT = 18.84 MILE

STATE OF ILLINOIS  
DEPARTMENT OF TRANSPORTATION  
DIVISION OF HIGHWAYS

SUBMITTED *January 29, 2014*

*John Falgout*  
DEPUTY DIRECTOR OF HIGHWAYS, REGION ENGINEER

*March 21, 2014*  
*John D. Baranelli, P.E.*  
ENGINEER OF DESIGN AND ENVIRONMENT

*March 21, 2014*  
*Omer Osman, P.E.*  
DIRECTOR OF HIGHWAYS, CHIEF ENGINEER

PRINTED BY THE AUTHORITY  
OF THE STATE OF ILLINOIS